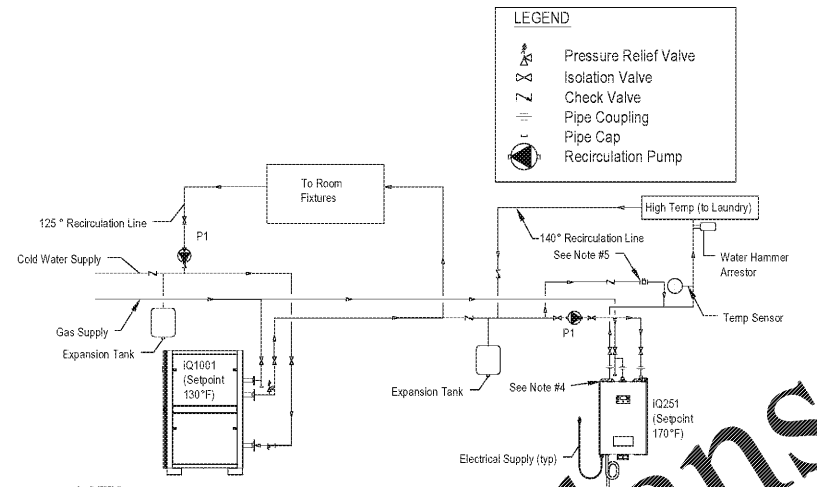
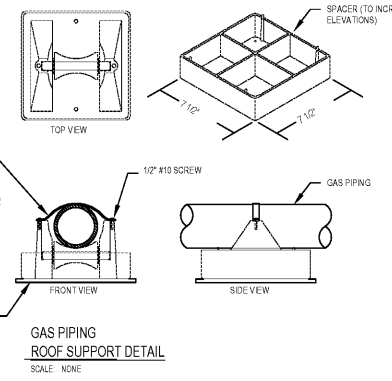
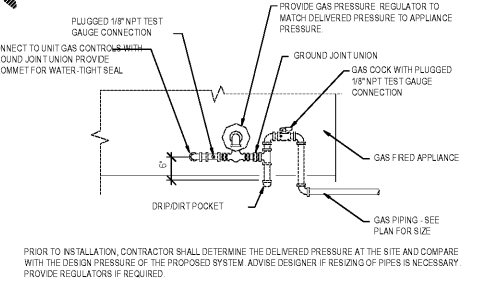
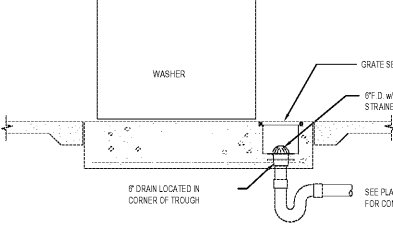
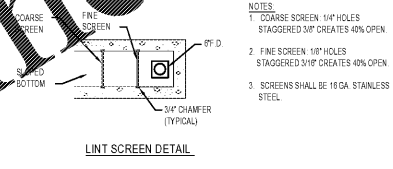
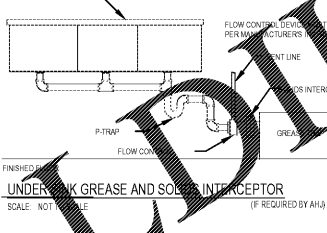
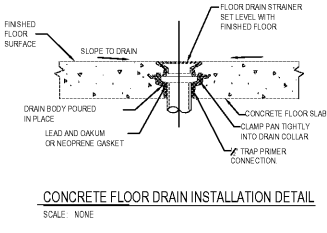
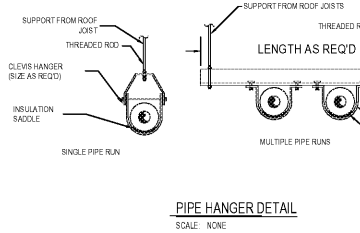
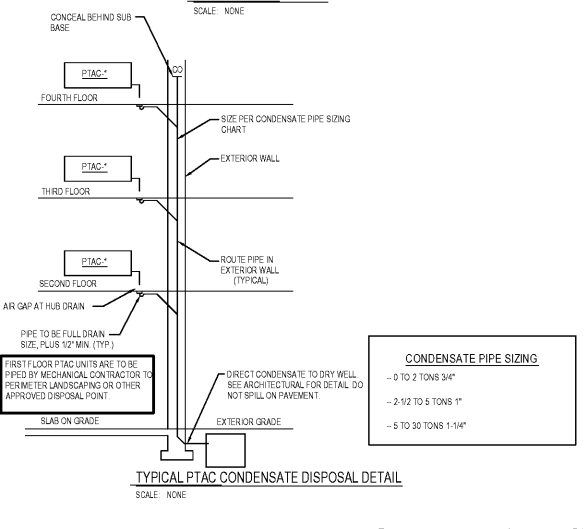
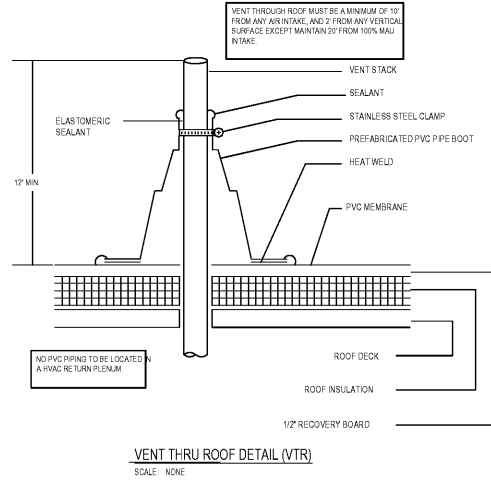
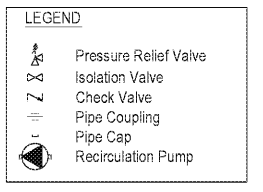


NOTES:
1. COARSE SCREEN: 1/4" HOLES STAGGERED 3/4" CREATES 40% OPEN
2. FINE SCREEN: 1/8" HOLES STAGGERED 3/4" CREATES 40% OPEN
3. SCREENS SHALL BE 16 GA. STAINLESS STEEL



- NOTES:**
- This schematic is a suggested piping configuration.
 - Any additional requirements from local codes and ordinances shall be incorporated into this diagram.
 - For pipe sizes and gas pressure requirements, please refer to applicable codes and manufacturer's literature.
 - Venting materials for IQ251 should be CPVC, approved polypropylene, or AL29-4C stainless steel.
 - Adjust circuit setter so that maximum allowable flow goes through IQ251.
 - Water heater IQ 1001 is sized such that 1 module can be out of service and that the remaining modules will satisfy 100% of guest room demand.



CONDENSATE PIPE SIZING

0 TO 2 TONS 3/4"
2-1/2 TO 5 TONS 1"
5 TO 30 TONS 1-1/4"

Order Plans @

WWW.LDLine.com

HAMPTON INN
NEW HOTEL
ASHLAND CITY, TENNESSEE
WWW.DAVIDRCARTER.NET
DAVID R. CARTER AND ASSOCIATES



ISSUE DATE: 05-30-19
REVISION LOG

PROJECT 00755