

02 | DUMPSTER SCREEN / STORAGE

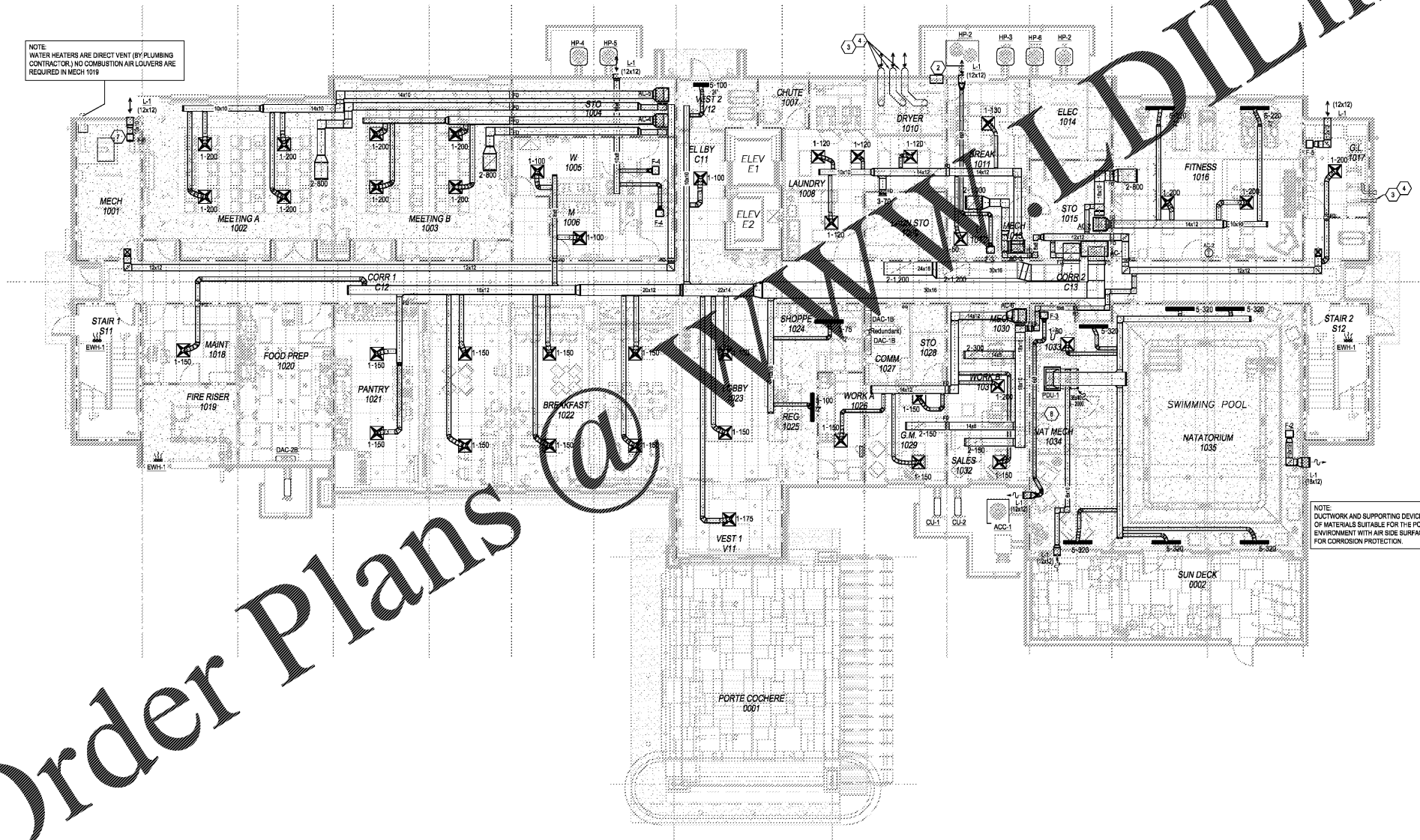
- KEYED NOTES**
- 1 DUCT UP IN CHASE ABOVE. PROVIDE FIRE DAMPER AT FLOOR PENETRATION.
  - 2 (2) L2 24x36 (FREE AREA 2.73 SF EACH) ONE 6" A.F.F. ONE 6" BELOW CEILING. LOWER SHALL INCLUDE 1/2" CORROSION RESISTANT EXTERIOR SCREEN. INTERLOCK WEATHER-STRIPPED MOTORIZED DAMPERS WITH DRYER OPERATION.
  - 3 DRYER VENTS SHALL BE SIZED AND INSTALLED PER MANUFACTURER'S SPECIFICATIONS, OR METHODS DESCRIBED IN IMC 504. SHEET METAL VENTS ONLY. RIVETED, NOT SCREWED.
  - 4 LINT TRAP SHALL BE SIZED AND INSTALLED PER MANUFACTURER'S SPECIFICATIONS. LAUNDRY EQUIPMENT SUPPLIER MUST PROVIDE A WET OR DRY EXHAUST VENT FILTER TO COLLECT AND CONTROL LINT ACCUMULATION. FABRICATE AND INSTALL EXHAUST DUCTWORK TO MINIMIZE DUST OR LINT ENTRAPMENT AND PROVIDE CLEAN, UNOBSTRUCTED OPENINGS AT LEAST 20'-3" FROM OUTDOOR AIR INTAKE.
  - 5 ROUTE CONDENSATE, FULL SIZE, TO DRAIN. COORDINATE EXACT LOCATION OF DRAIN WITH PLUMBING CONTRACTOR. SEE DRAINING PLAN.
  - 6 PROVIDE THERMO-CUT WITH LOCK.
  - 7 COVER EXHAUST FAN WITH 1/4" MESH.
  - 8 COORDINATE PER MANUFACTURER'S REQUIREMENTS.
  - 9 SECONDARY FILTER SHALL BE INSTALLED PER I-1. COORDINATE INSTALLATION WITH PLUMBING CONTRACTOR AND ELECTRICAL CONTRACTOR. SEE POOL UNIT CONNECTION DETAIL.

NOTE: PROVIDE UV PROTECTIVE COATING ON ALL ELASTOMERIC PIPE INSULATION WHERE EXPOSED TO SUNLIGHT.

NOTE: WATER HEATERS ARE DIRECT VENT (BY PLUMBING CONTRACTOR). NO COMBUSTION AIR LOUVERS ARE REQUIRED IN MECH 1001.

NOTE: DUCTWORK AND SUPPORTING DEVICES SHALL BE OF MATERIALS SUITABLE FOR THE POOL ENVIRONMENT WITH AIR SIDE SURFACES COATED FOR CORROSION PROTECTION.

Order Plans @ [www.dlLine.com](http://www.dlLine.com)



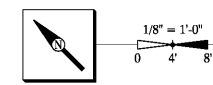
1 HOUR FIRE RATED PARTITION  
2 HOUR FIRE RATED PARTITION

March Adams & Associates  
1000 Dobbins Ave.  
Chattanooga, Tennessee 37404  
P: 423.698.4673  
F: 423.698.4673  
www.maa.com

HAMPTON INN  
NEW HOTEL  
ASHLAND CITY, TENNESSEE  
WWW.DAVIDRCARTER.NET  
DAVID R. CARTER AND ASSOCIATES



ISSUE DATE 05-30-19  
REVISION LOG



PROJECT 00755

LEVEL 1 FLOOR MECHANICAL PLAN M101