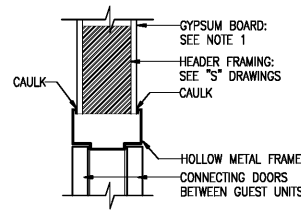
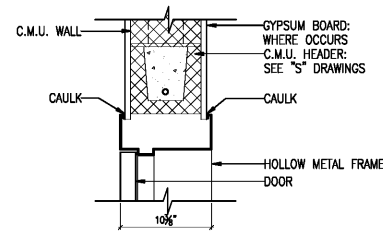


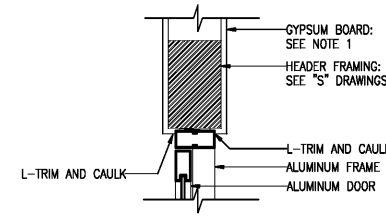
01 | DOOR HEAD



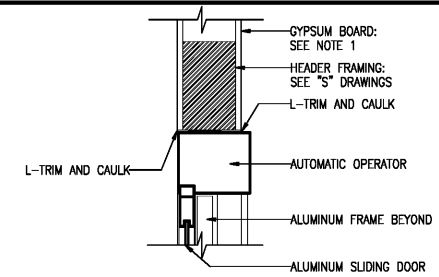
04 | CONNECTING DOOR HEAD



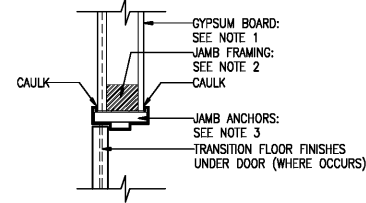
07 | STAIR DOOR HEAD



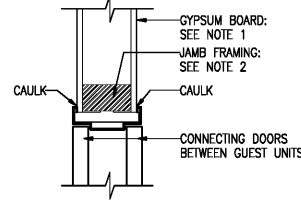
10 | STOREFRONT DOOR HEAD



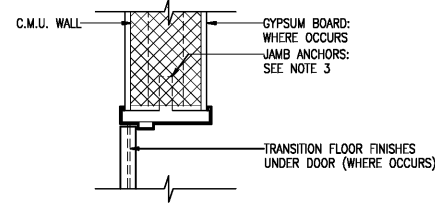
13 | AUTOMATIC DOOR HEAD



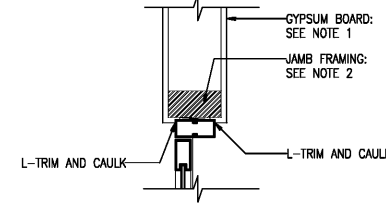
02 | DOOR JAMB



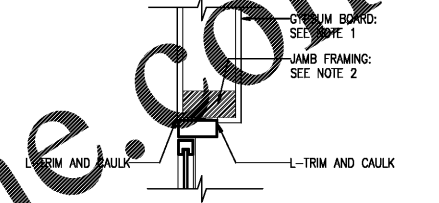
05 | CONNECTING DOOR JAMB



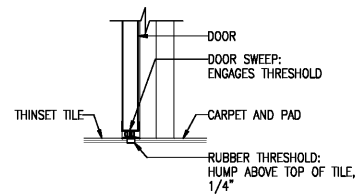
08 | STAIR DOOR JAMB



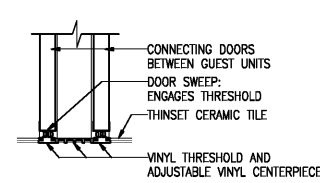
11 | STOREFRONT DOOR JAMB



14 | AUTOMATIC DOOR JAMB



03 | DOOR SILL

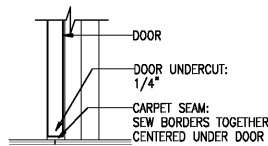


06 | CONNECTING DOOR SILL

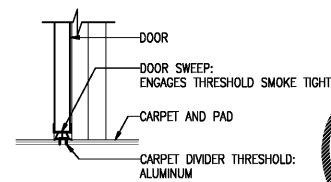
09 | NOT USED

12 | STOREFRONT DOOR SILL

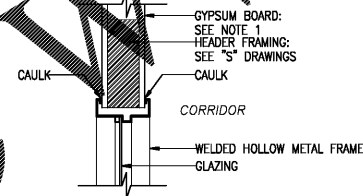
15 | AUTOMATIC DOOR SILL



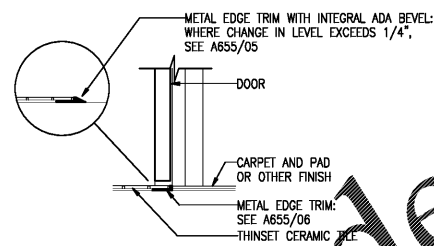
16 | DOOR SILL



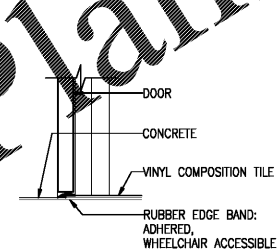
19 | DOOR SILL



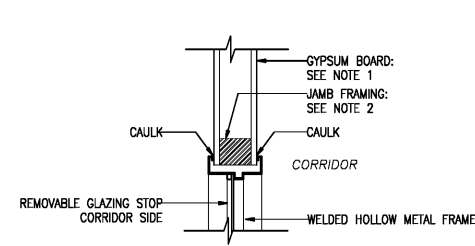
22 | BORROWED LIGHT HEAD



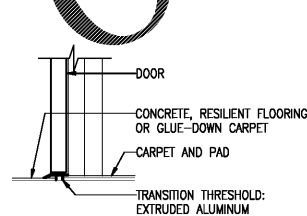
17 | DOOR SILL



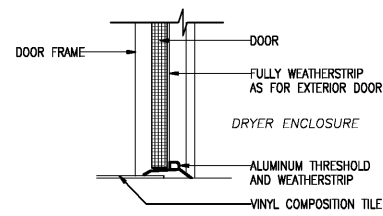
20 | DOOR SILL



23 | BORROWED LIGHT JAMB



18 | DOOR SILL



21 | DOOR SILL

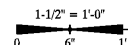
SHEET NOTES

1. CONTRACTOR SHALL COORDINATE ALL DOOR FRAME THROATS WITH STUD WIDTHS AND THICKNESSES OF GYPSUM BOARD FOR EACH WALL ASSEMBLY WHERE FRAME OCCURS. NOT EVERY CONDITION IS DETAILED, THOUGH CONSTRUCT ALL SIMILARLY.
2. PROVIDE TWO STUDS AT EACH DOOR JAMB. FASTEN BOTH STUDS TOGETHER 16" O.C. TO UNITIZE MEMBERS. SEE A802/10.
3. FOR DOOR FRAME JAMB ANCHORS, SEE SPECIFICATIONS AND A802/11.
4. ALL THRESHOLDS AND FLOORING EDGE TRIM SHALL BE WHEELCHAIR ACCESSIBLE. SEE A655/05.

HAMPTON INN
NEW HOTEL
ASHLAND CITY, TENNESSEE
WWW.DAVIDRCARTER.NET
DAVID R. CARTER AND ASSOCIATES



ISSUE DATE 05-30-19
REVISION LOG



PROJECT 00755

DOOR AND WINDOW DETAILS- INTERIOR A803

30 x 42