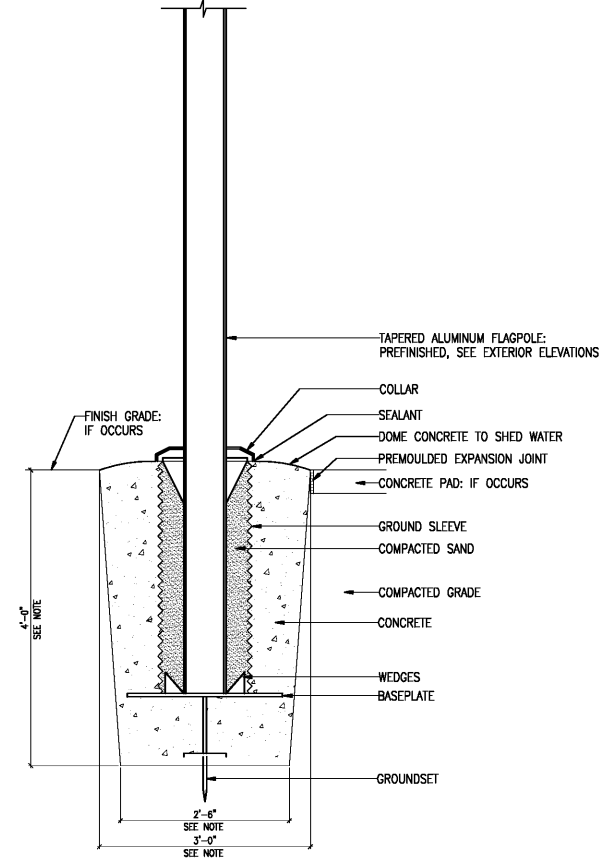


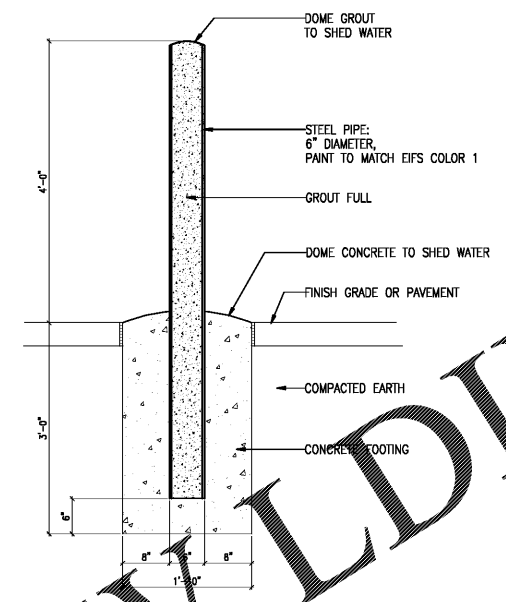
PROVIDE SIGN AT EACH ACCESSIBLE PARKING SPACE. SEE ACT01

01 PARKING SIGN

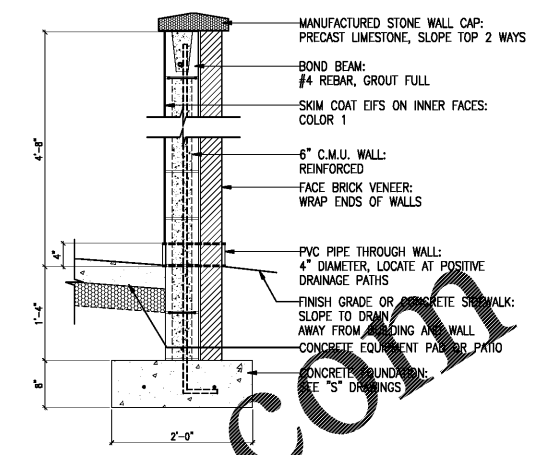


NOTE: FLAGPOLE MANUFACTURER'S ENGINEER SHALL DESIGN AND CERTIFY FOOTINGS FOR EACH FLAGPOLE.

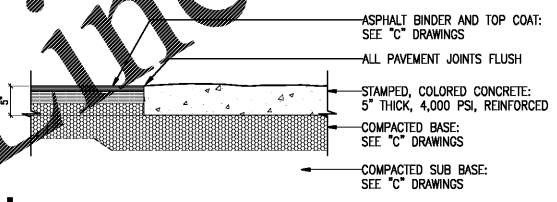
02 FLAGPOLE



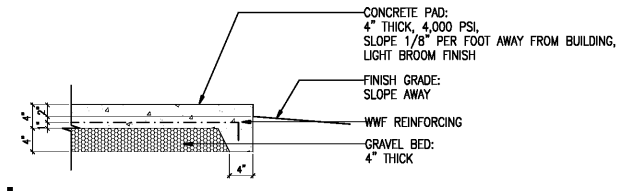
03 BOLLARD



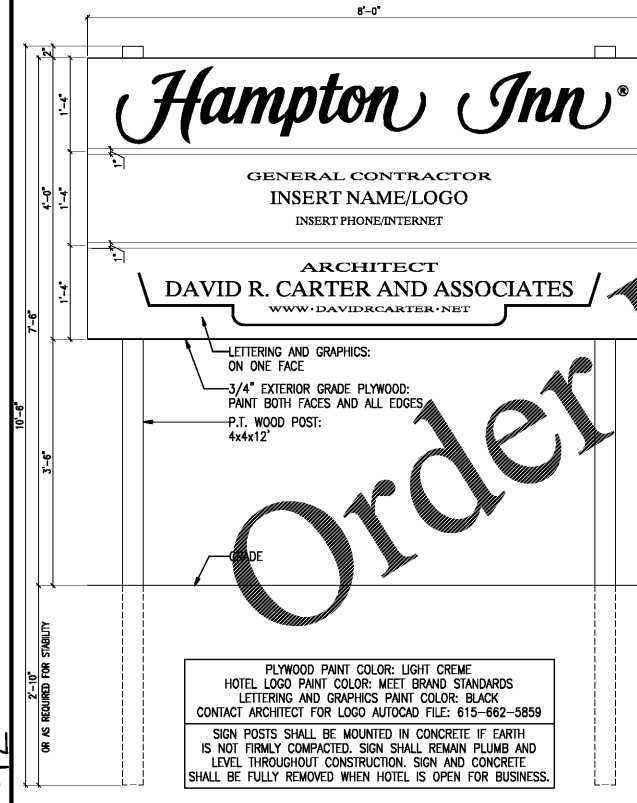
04 HVAC EQUIPMENT SCREEN WALL



05 PAVEMENT TRANSITION



06 MECHANICAL EQUIPMENT PAD

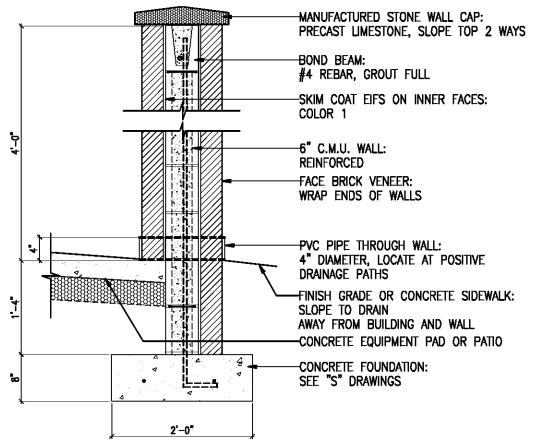


PLYWOOD PAINT COLOR: LIGHT CREME
HOTEL LOGO PAINT COLOR: MEET BRAND STANDARDS
LETTERING AND GRAPHICS PAINT COLOR: BLACK
CONTACT ARCHITECT FOR LOGO AUTOCAD FILE: 615-662-5859

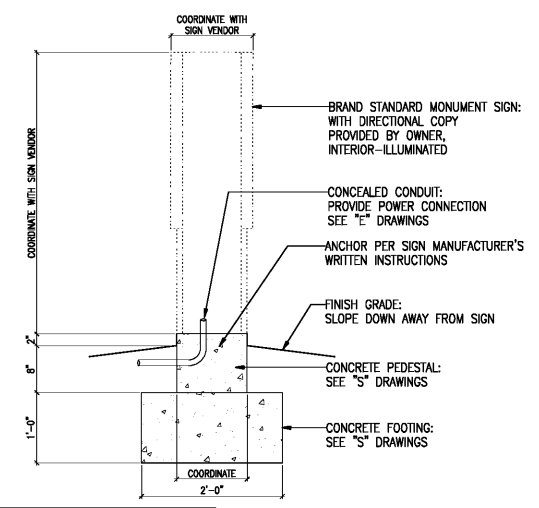
SIGN POSTS SHALL BE MOUNTED IN CONCRETE. IF EARTH IS NOT FIRMLY COMPACTED, SIGN SHALL REMAIN PLUMB AND LEVEL THROUGHOUT CONSTRUCTION. SIGN AND CONCRETE SHALL BE FULLY REMOVED WHEN HOTEL IS OPEN FOR BUSINESS.

LOCATE FACING STREET, VISIBLE FROM BOTH DIRECTIONS POSITION AT GENERAL CONTRACTOR'S DISCRETION

07 CONSTRUCTION SIGN



08 SUN PATIO SCREEN WALL



09 MONUMENT SIGN

HAMPTON INN
NEW HOTEL
ASHLAND CITY, TENNESSEE
WWW.DAVIDRCARTER.NET
DAVID R. CARTER AND ASSOCIATES



ISSUE DATE 05-30-19
REVISION LOG



PROJECT 00755

DETAILS A651

30 x 42