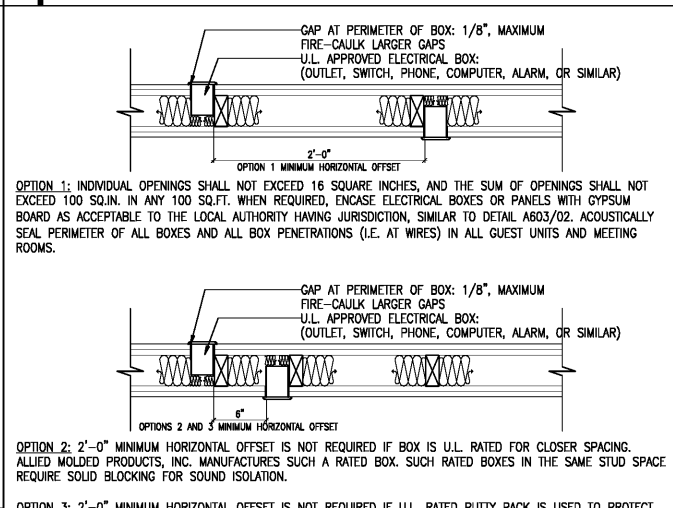
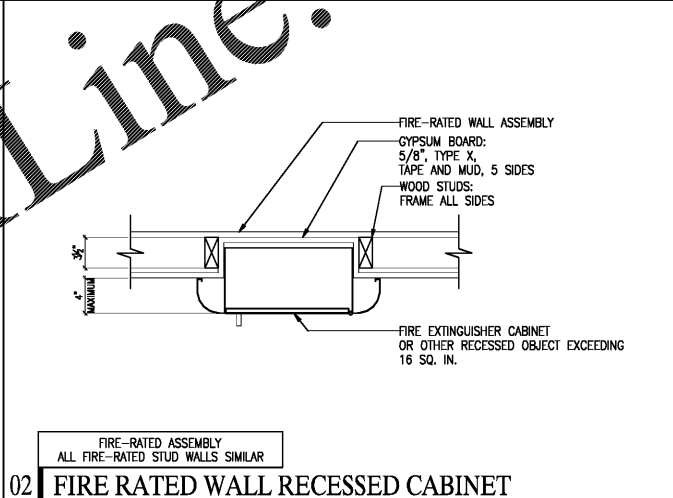
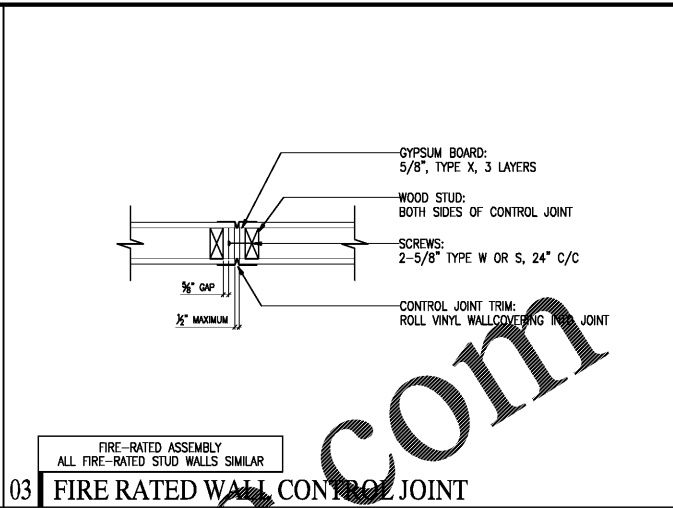
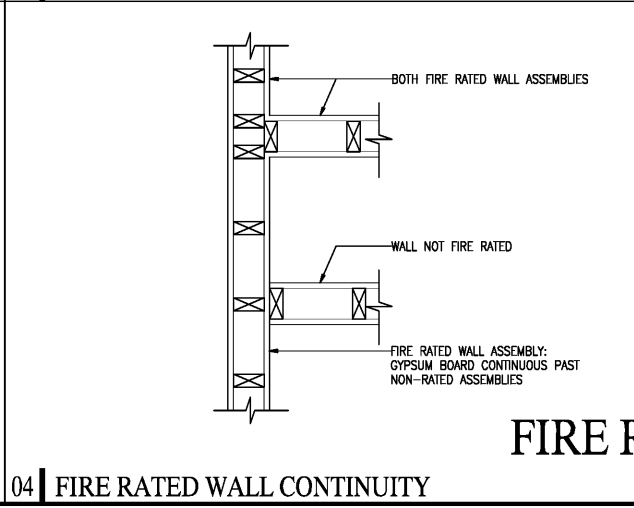
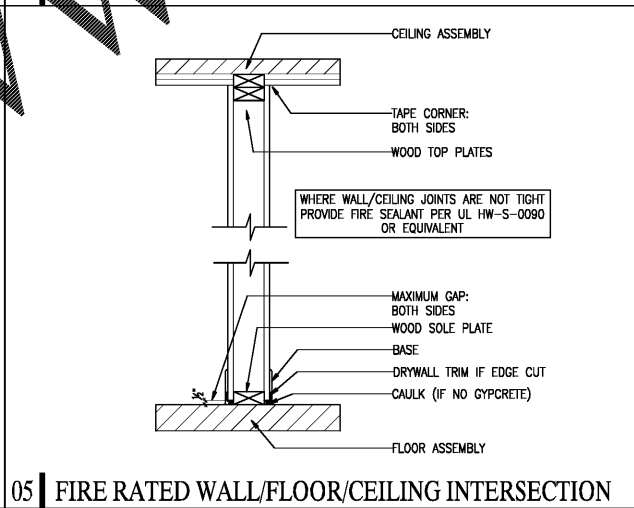
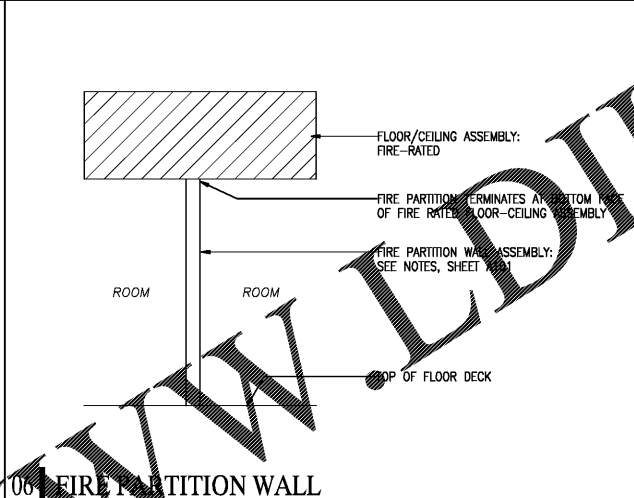
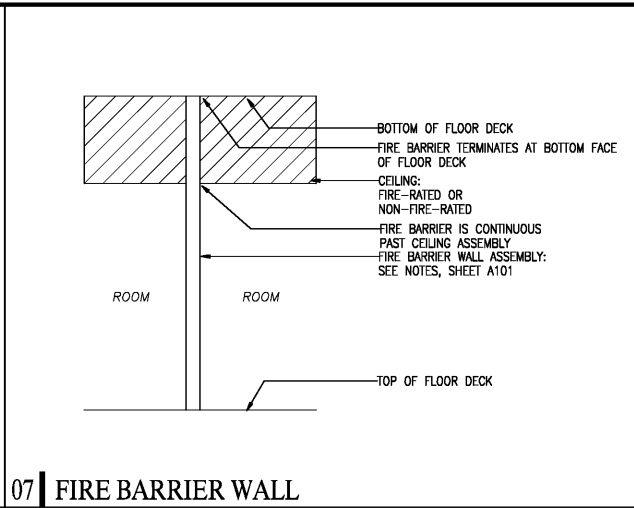
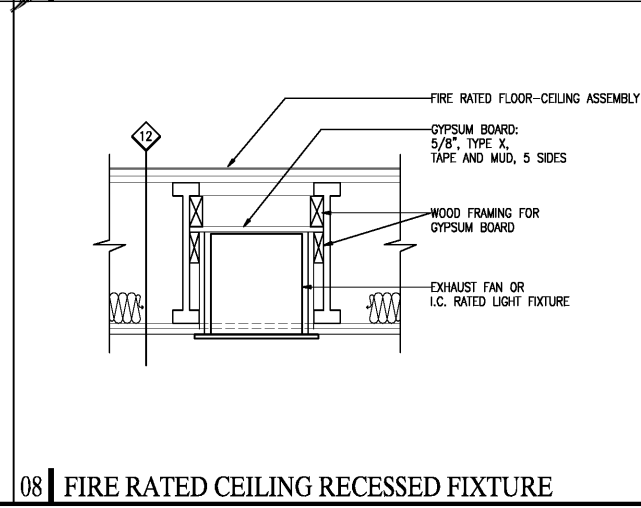
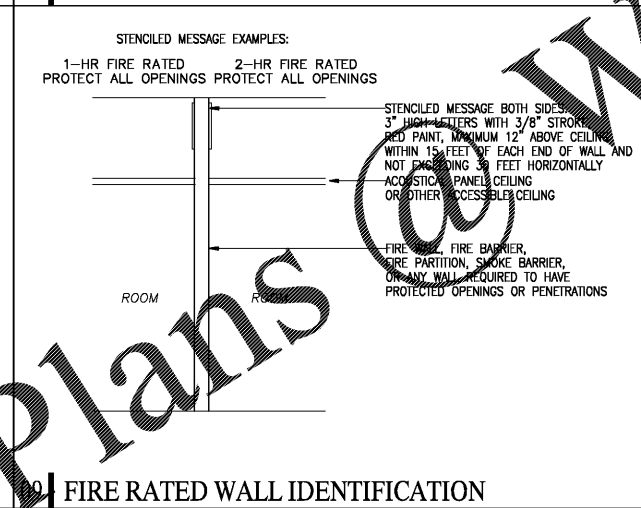
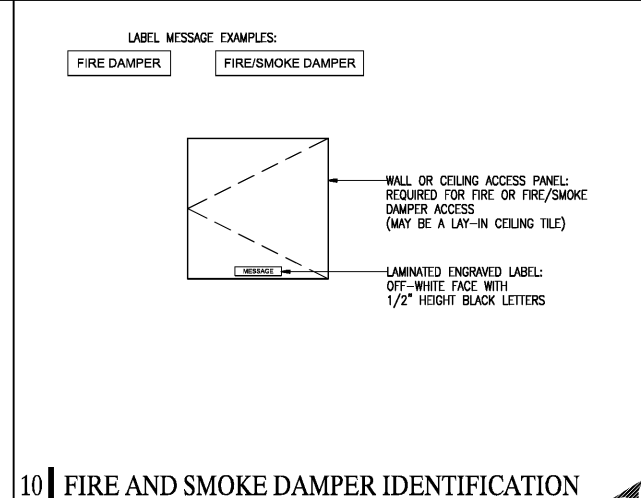
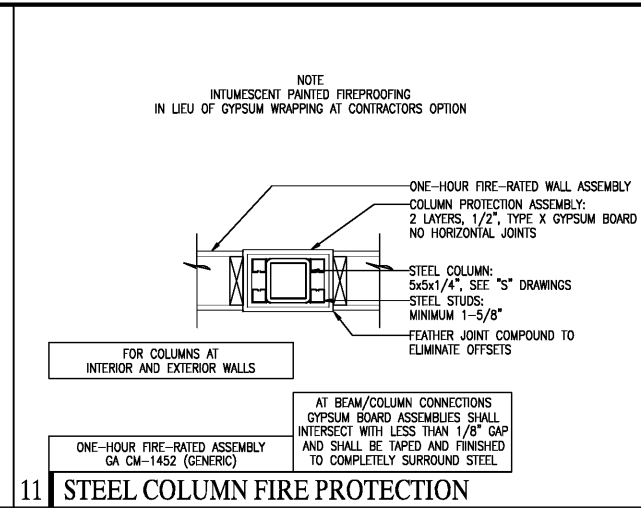
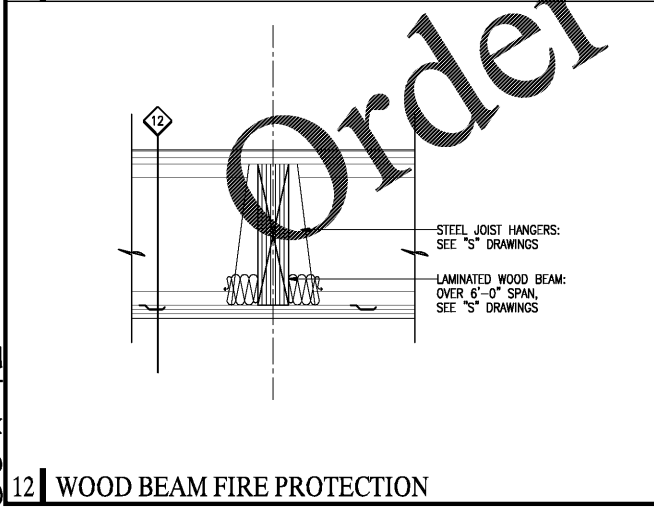
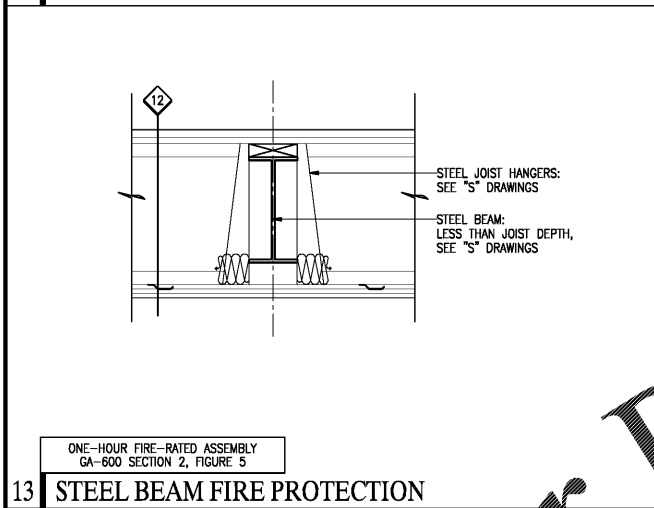
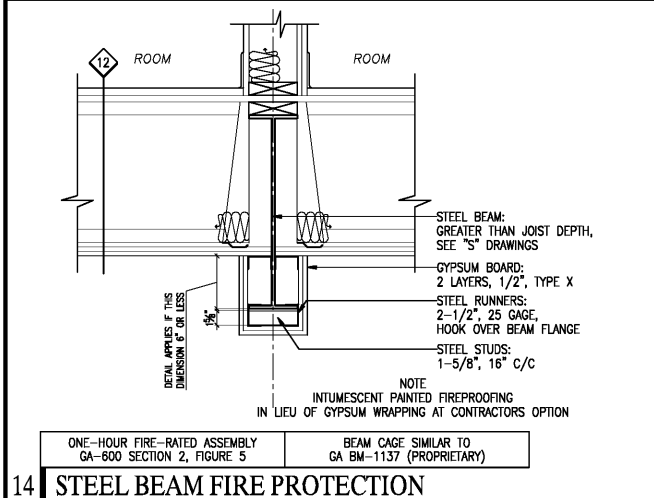
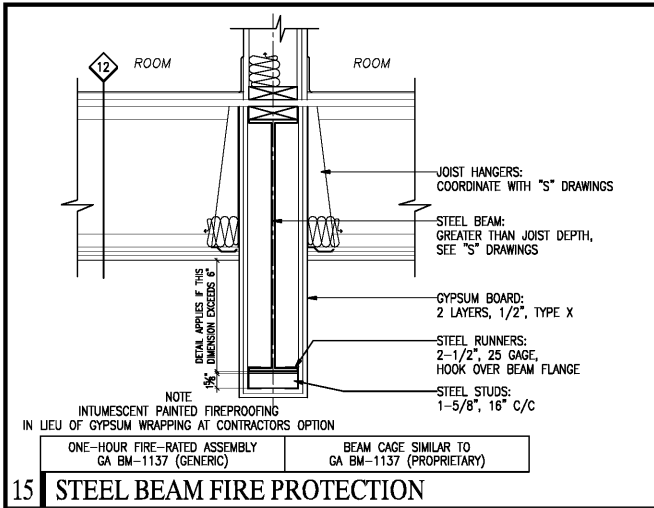


30 x 42



1 FIRE RATED WALL ELECTRICAL BOXES

SHEET NOTES

- FOR OTHER VARIATIONS OF FIRE RATED ASSEMBLY INTERSECTIONS AND CONTINUITY, SEE DETAILS ON SHEET SERIES A550 AND A650.
- FOR ELECTRICAL BOXES IN FIRE RATED STUD WALLS, SEE DETAIL A603/01.
- FOR CONTROL JOINTS IN FIRE RATED STUD WALLS, SEE DETAIL A603/02.
- FOR LARGE RECESSED ITEMS IN FIRE RATED STUD WALLS, SEE DETAIL A603/03.

ISSUE DATE 05-30-19
REVISION LOG

1-1/2" = 1'-0"
0 6" 1' PROJECT 00755

HAMPTON INN
NEW HOTEL
ASHLAND CITY, TENNESSEE
WWW.DAVIDRCARTER.NET
DAVID R. CARTER AND ASSOCIATES



FIRE RATED ASSEMBLIES- INTEGRITY A603