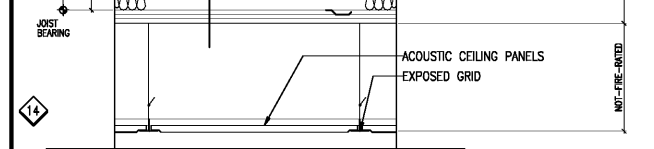
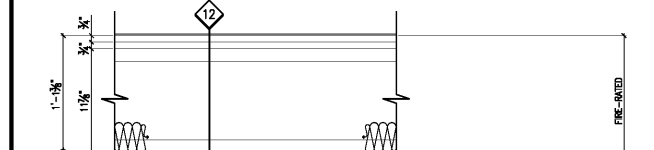


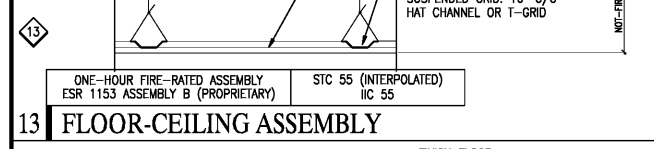
14a FLOOR-CEILING ASSEMBLY
 TWO-HOUR FIRE-RATED ASSEMBLY
 ESR 1153 ASSEMBLY G (PROPRIETARY) STC 55 (INTERPOLATED) IIC 55



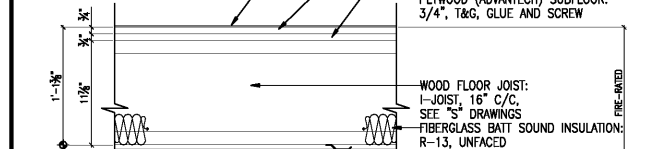
14 FLOOR-CEILING ASSEMBLY
 ONE-HOUR FIRE-RATED ASSEMBLY
 ESR 1153 ASSEMBLY B (PROPRIETARY) STC 55 (INTERPOLATED) IIC 55



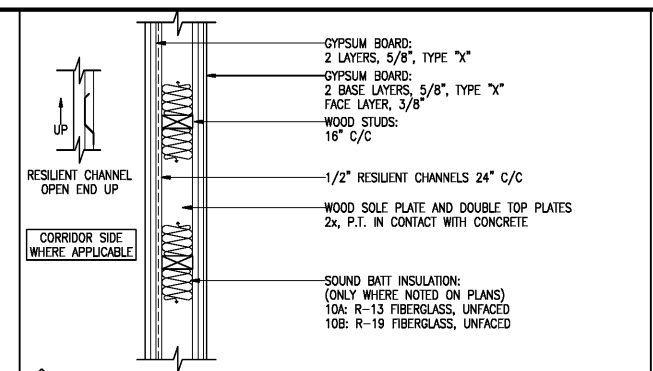
13 FLOOR-CEILING ASSEMBLY
 ONE-HOUR FIRE-RATED ASSEMBLY
 ESR 1153 ASSEMBLY B (PROPRIETARY) STC 55 (INTERPOLATED) IIC 55



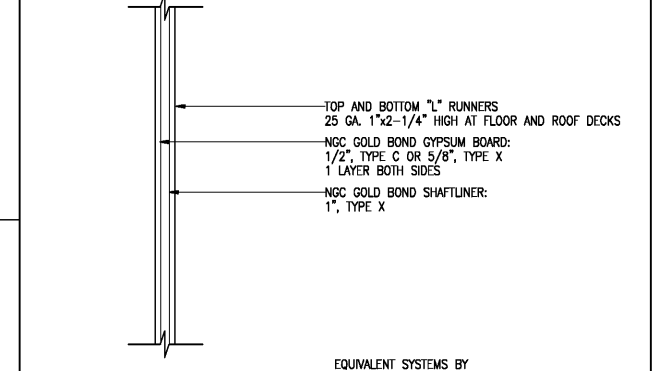
12 FLOOR-CEILING ASSEMBLY
 ONE-HOUR FIRE-RATED ASSEMBLY
 ESR 1153 ASSEMBLY B (PROPRIETARY) STC 55 (INTERPOLATED) IIC 55



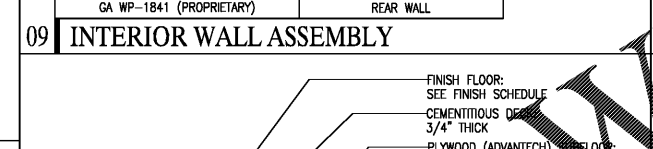
11 SLAB ON GRADE



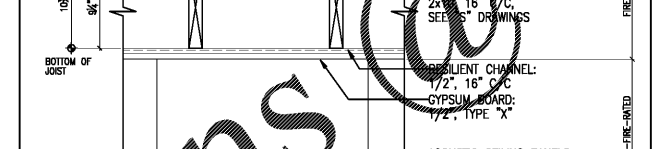
10 INTERIOR WALL ASSEMBLY
 TWO-HOUR FIRE-RATED ASSEMBLY
 GA WP-3010 (GENERIC) STC 60-64 (LABORATORY) GUEST UNIT - PUBLIC AREA



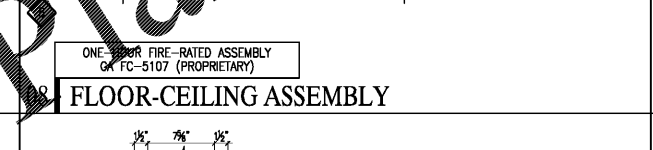
9 INTERIOR WALL ASSEMBLY
 TWO-HOUR FIRE-RATED ASSEMBLY
 GA WP-1841 (PROPRIETARY) EQUIVALENT SYSTEMS BY OTHER MANUFACTURERS ACCEPTABLE NGC-NATIONAL GYPSUM COMPANY LINEN CHUTE SHAFT REAR WALL



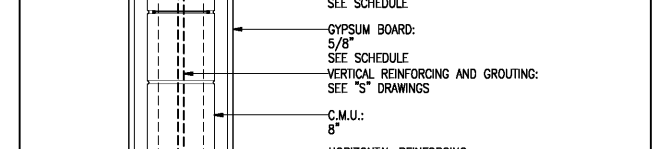
8 FLOOR-CEILING ASSEMBLY
 ONE-HOUR FIRE-RATED ASSEMBLY
 GA FC-5107 (PROPRIETARY)



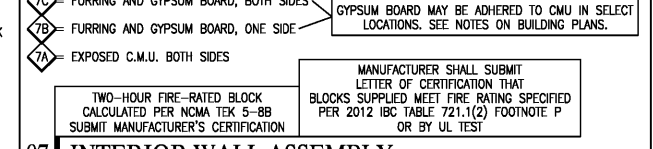
7c FLOOR-CEILING ASSEMBLY
 TWO-HOUR FIRE-RATED BLOCK CALCULATED PER NOMA TEK 5-88 SUBMIT MANUFACTURER'S CERTIFICATION



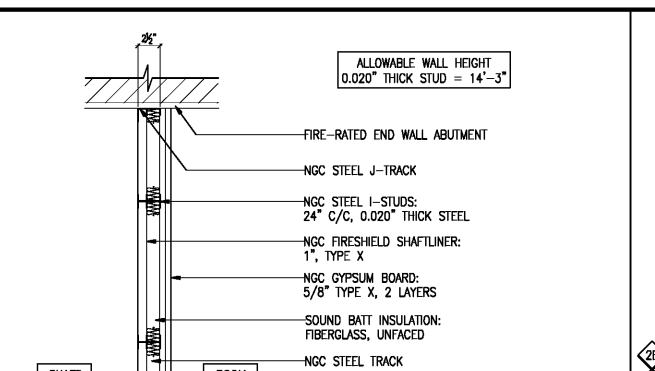
7b FLOOR-CEILING ASSEMBLY
 TWO-HOUR FIRE-RATED BLOCK CALCULATED PER NOMA TEK 5-88 SUBMIT MANUFACTURER'S CERTIFICATION



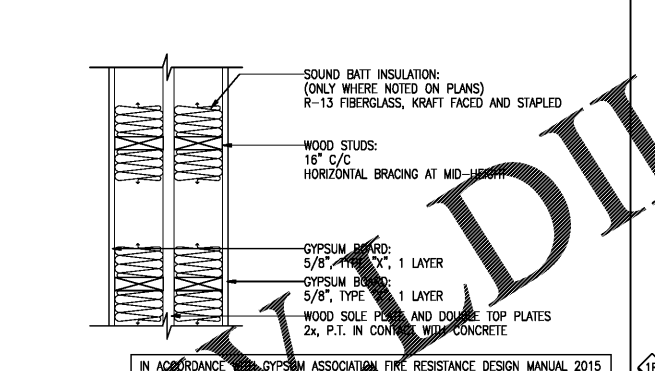
7a FLOOR-CEILING ASSEMBLY
 TWO-HOUR FIRE-RATED BLOCK CALCULATED PER NOMA TEK 5-88 SUBMIT MANUFACTURER'S CERTIFICATION



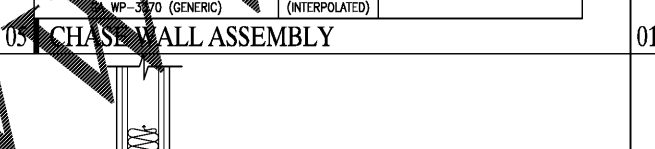
07 INTERIOR WALL ASSEMBLY
 TWO-HOUR FIRE-RATED ASSEMBLY
 GA WP-3243 (GENERIC) STC 50-54 (FIELD) GUEST UNIT - GUEST UNIT GUEST UNIT - CORRIDOR



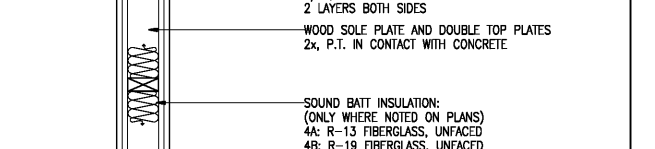
06 SHAFT WALL ASSEMBLY
 TWO-HOUR FIRE RATED ASSEMBLY
 GA WP-7080 (PROPRIETARY) STC 45-49 (TESTED) EQUIVALENT SYSTEMS BY OTHER MANUFACTURERS ACCEPTABLE NGC-NATIONAL GYPSUM COMPANY MECHANICAL SHAFT



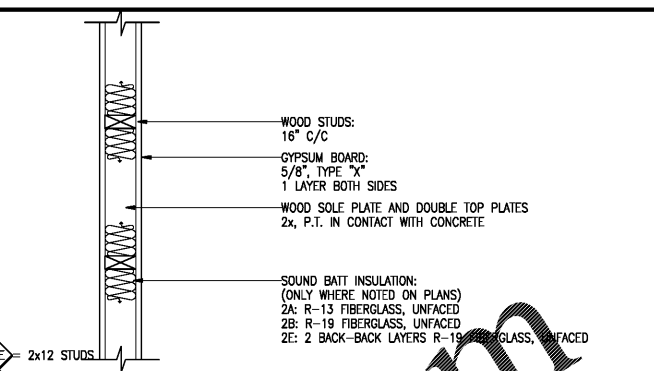
05 CHASE WALL ASSEMBLY
 ONE-HOUR FIRE-RATED ASSEMBLY
 GA WP-3370 (GENERIC) STC 50-54 (INTERPOLATED) PLUMBING CHASE



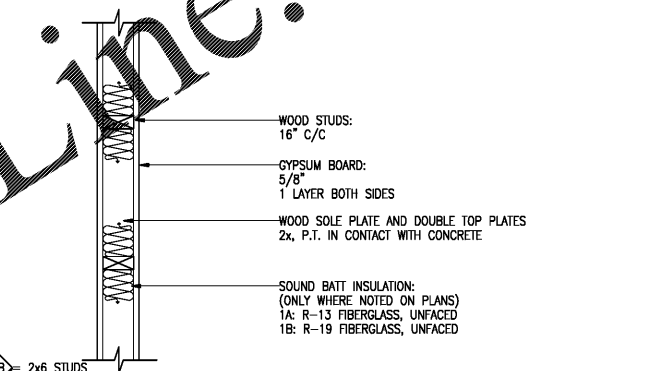
04 INTERIOR WALL ASSEMBLY
 TWO-HOUR FIRE-RATED ASSEMBLY
 GA WP-4136 (GENERIC) STC 40-44 (LABORATORY) MECHANICAL SHAFT



03 INTERIOR WALL ASSEMBLY
 ONE-HOUR FIRE-RATED ASSEMBLY
 GA WP-3243 (GENERIC) STC 50-54 (FIELD) GUEST UNIT - GUEST UNIT GUEST UNIT - CORRIDOR



02 INTERIOR WALL ASSEMBLY
 ONE-HOUR FIRE-RATED ASSEMBLY
 GA WP-3514 (GENERIC) STC 35-39 (LABORATORY)



01 INTERIOR WALL ASSEMBLY
 ASSEMBLY NOT FIRE-RATED STC 35-39 (LABORATORY)

GYPSUM BOARD SCHEDULE

LOCATION	DESCRIPTION
INSIDE ALL SHAFTS, NATATORIUM, POOL MECHANICAL, POOL RESTROOM, WATER HEATER ROOM	GLASS FIBER FACED BOARD FIBERGLASS TAPE (DENSARMOR PLUS) WHERE VISIBLE TO GUESTS, PROVIDE LEVEL 5 FINISH
AROUND ALL BATHTUBS AND SHOWERS, GUEST BATHROOM CEILINGS, EMPLOYEE AND PUBLIC RESTROOMS, FOOD PREP, FIRE RISER ROOM, HOUSE LAUNDRY, GUEST LAUNDRY	MOISTURE RESISTANT PAPER FACED BOARD (TOUGHROCK MOLD-GUARD)
OTHER INTERIOR WALLS	PAPER FACED BOARD (TOUGHROCK)
EXTERIOR WALL SHEATHING	GLASS FIBER FACED BOARD (DENSGLASS GOLD)
EXTERIOR CEILINGS	TREATED PAPER FACED BOARD FIBERGLASS TAPE (TOUGHROCK FIREGUARD C SOFFIT BOARD)

* PRODUCTS LISTED IN PARENTHESIS ARE BY GEORGIA-PACIFIC. EQUIVALENT PRODUCTS OF OTHER MANUFACTURERS MAY BE SUBSTITUTED WITH APPROVAL.

GYPSUM UNDERLAYMENT SCHEDULE

LOCATION	DESCRIPTION
ALL GUEST UNITS, OTHER ROOMS, CORRIDORS	2,000-3,200 PSI (MAXXON GYPCRETE 2000/3.2K OR EQUIVALENT)

* PRODUCTS LISTED IN PARENTHESIS ARE BY MAXXON. EQUIVALENT PRODUCTS OF OTHER MANUFACTURERS MAY BE SUBSTITUTED WITH APPROVAL.
 • GYCRETE REQUIRED TO BE INSTALLED UNDER BATHTUBS.
 • PROPERLY VENTILATE AND DRY GYPSUM UNDERLAYMENT AND DO NOT ALLOW TRAFFIC UNTIL CURED AS RECOMMENDED BY MANUFACTURER.
 • PROVIDE ANTI-FRACTURE MEMBRANE FOR CERAMIC TILE FINISH APPLICATIONS.
 • MER-KRETE FRACTURE-GUARD 5,000 OR EQUIVALENT AS RECOMMENDED BY GYPSUM UNDERLAYMENT MANUFACTURER.
 • SEAL UNDERLAYMENT FOR GLUE-DOWN AND CERAMIC TILE FINISH APPLICATIONS.
 • MAXXON OVERSPRAY OR EQUIVALENT.

- SHEET NOTES**
- FOR FIRE RATED ASSEMBLY NOTES, SEE SHEET A604.
 - FOR SOUND WALL LOCATIONS, SEE FLOOR PLANS. AT SOUND WALLS, GYPSUM BOARD AND INSULATION SHALL EXTEND AND SEAL TO FLOOR/CEILING ASSEMBLY ABOVE.
 - FOR STRUCTURAL FRAMING, SEE "S" DRAWINGS. STRUCTURAL ENGINEER'S REQUIREMENTS WILL SUPERSEDE ARCHITECTURAL INDICATION OF FRAMING MEMBER SIZE AND SPACING EXCEPT AS REQUIRED FOR FIRE-RATING OR R-VALUE. IMMEDIATELY NOTIFY ARCHITECT OF ANY CONFLICT.
 - NOMA= NATIONAL CONCRETE MASONRY ASSOCIATION.
- 2012 IBC CODE COMMENTARY
 SEE CHAPTER 2 FOR DEFINITIONS OF "SHAFT WALL" AND "FIRESTOPPING."

**HAMPTON INN
 NEW HOTEL**
 ASHLAND CITY, TENNESSEE
 WWW.DAVIDRCARTER.NET
DAVID R. CARTER AND ASSOCIATES

ISSUE DATE 05-30-19
 REVISION LOG

PROJECT 00755

ASSEMBLY TYPES- INTERIOR A601

© 2019 DAVID R. CARTER AND ASSOCIATES