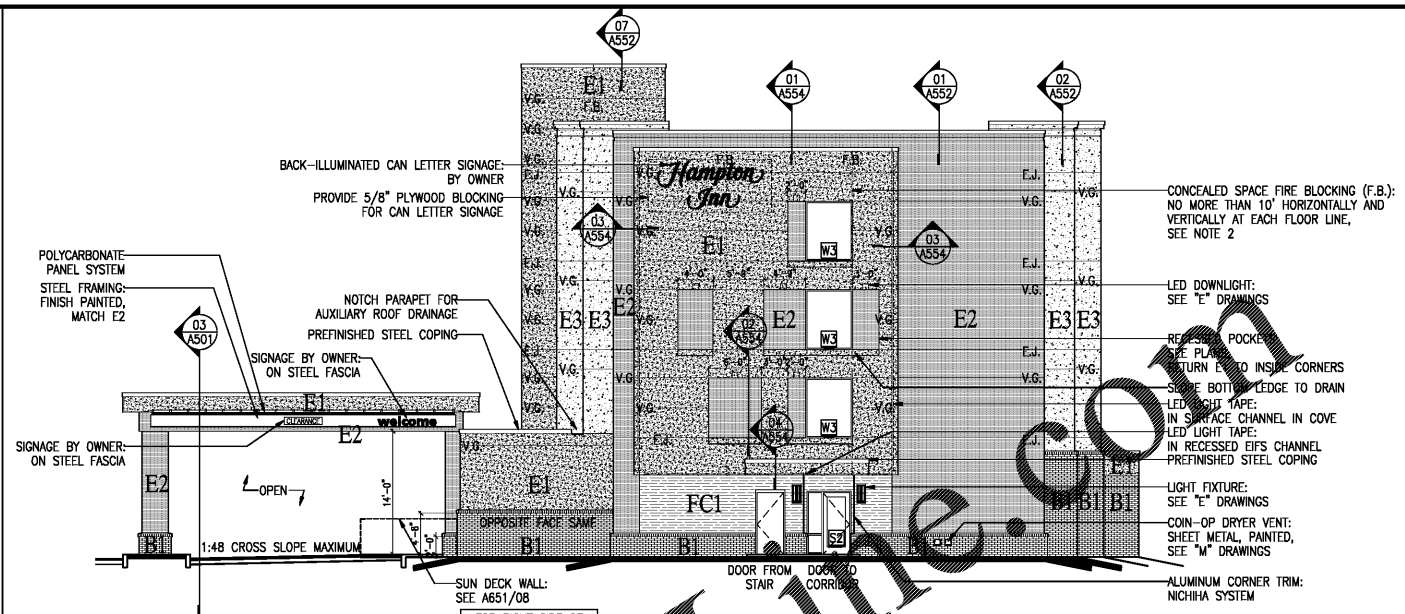
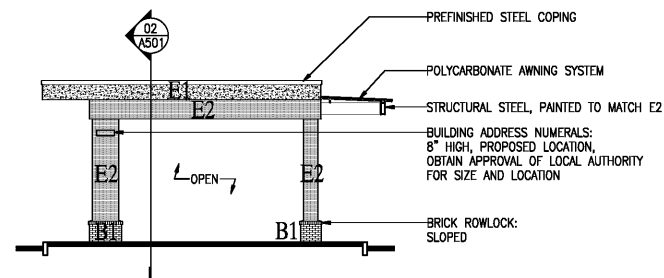


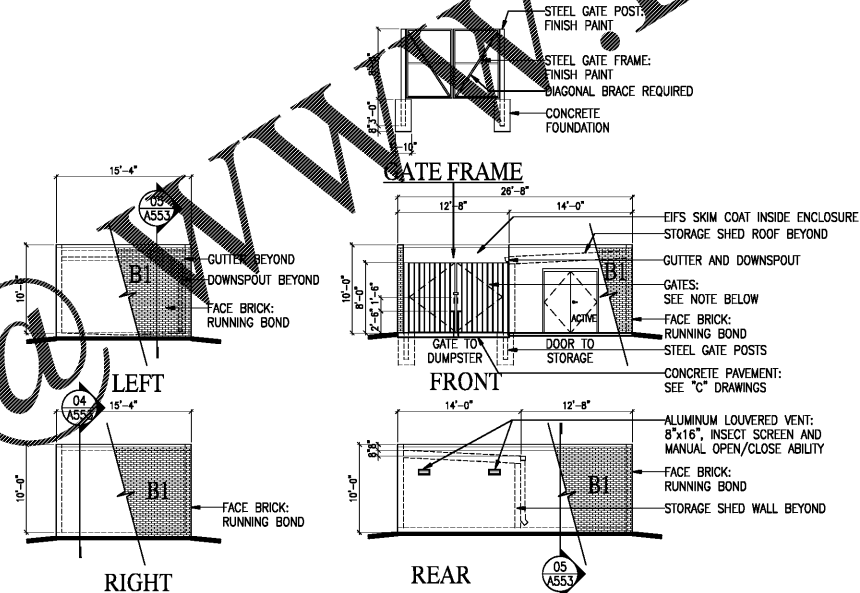
01 LEFT SIDE



02 RIGHT SIDE

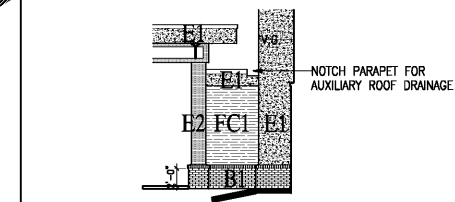


03 PORTE COCHERE

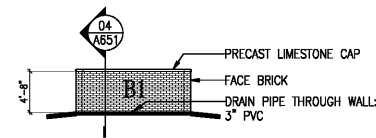


05 DUMPSTER ENCLOSURE / STORAGE SHED

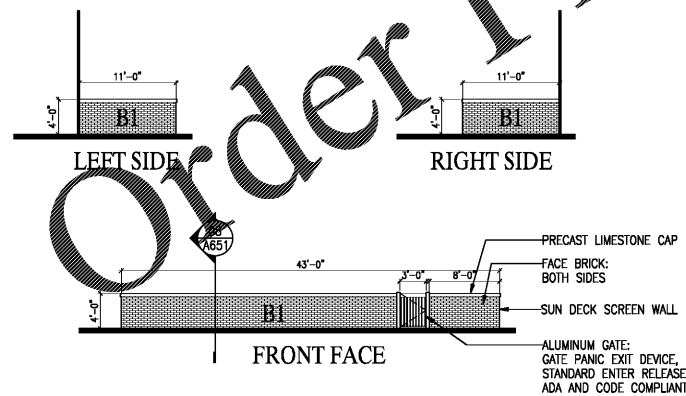
GATE POSTS SHALL BE 4x4 HEAVY WALL STEEL TUBE, PAINTED.
 GATE SHALL BE CONSTRUCTED OF 2x2 STEEL TUBE STRUCTURAL FRAME, PAINTED, WITH 24 GA. BERRIDGE HR-16 OR EQUIVALENT METAL FACE PANELS SECURELY FASTENED. PROVIDE 4 EXTRA HEAVY DUTY HINGES PER GATE LEAF, 2 HEAVY DUTY SURFACE BOLTS WITH HANDLES 30" ABOVE PAVEMENT, 2" DEEP ENGAGEMENT HOLES DRILLED INTO PAVEMENT AT OPEN AND CLOSED POSITIONS, AND 1 HEAVY DUTY LOCKABLE HASP.



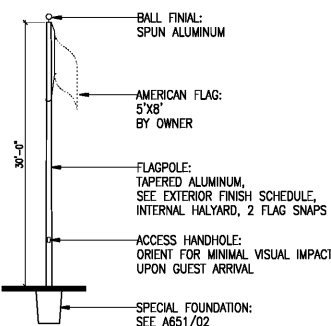
07 RIGHT SIDE OF ENTRANCE VESTIBULE



08 MECHANICAL SCREEN WALL



04 SUN DECK WALL



06 FLAG POLE

SHEET NOTES
 1. SEE NOTES, SHEET A401.

ISSUE DATE 05-30-19
 REVISION LOG



PROJECT 00755

EXTERIOR ELEVATIONS A402

HAMPTON INN
 NEW HOTEL
 ASHLAND CITY, TENNESSEE
 WWW.DAVIDRCARTER.NET
 DAVID R. CARTER AND ASSOCIATES



30 x 42