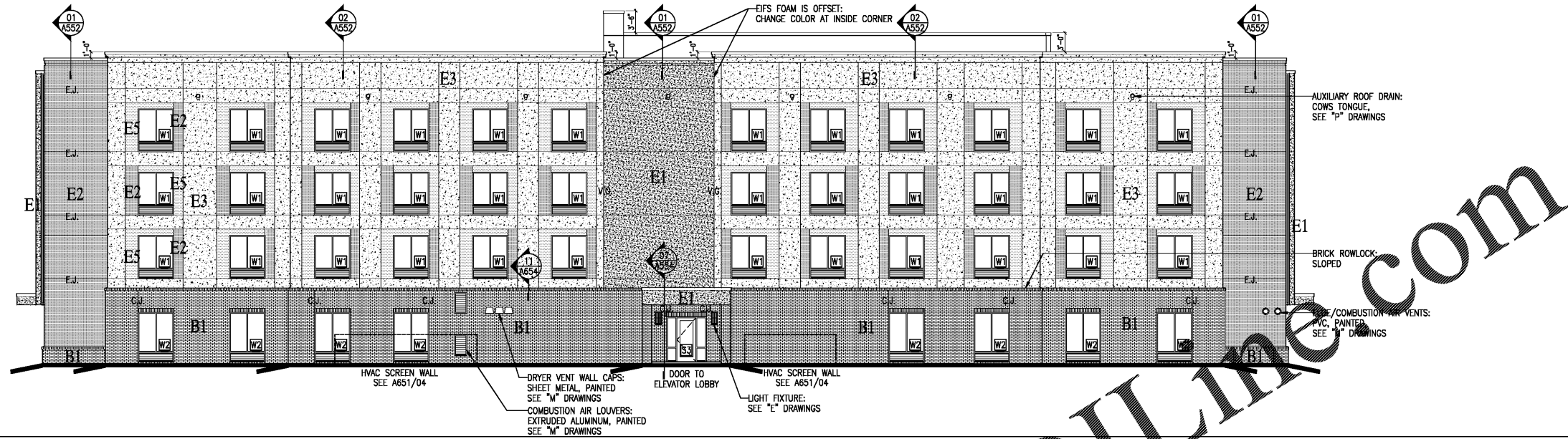
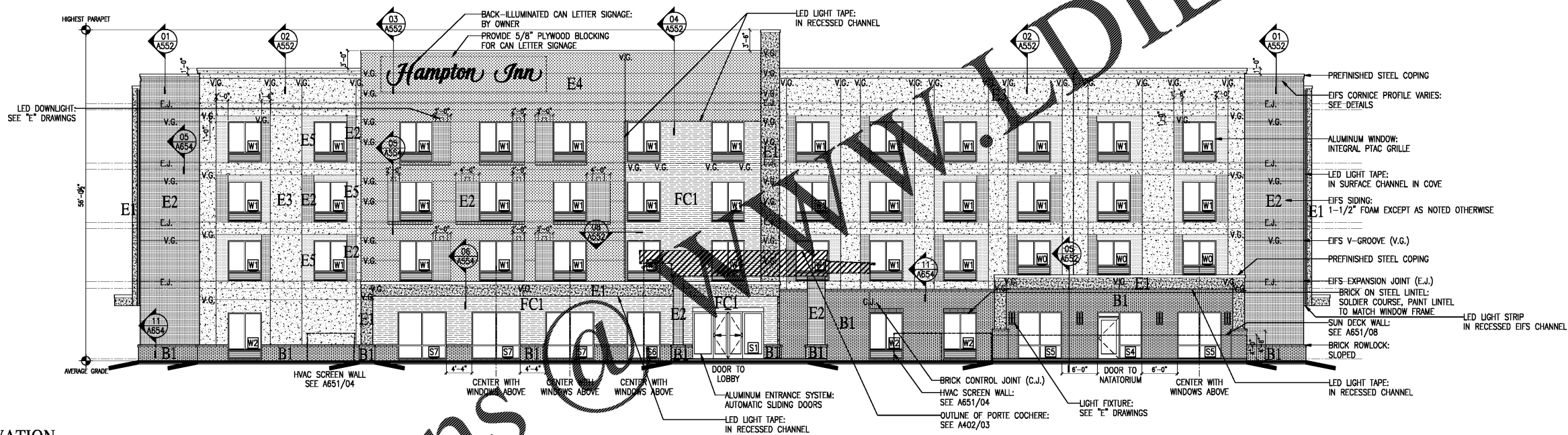


Order Plans



01 REAR ELEVATION



02 FRONT ELEVATION

EXTERIOR FINISH SCHEDULE

MATERIAL	BASIS OF DESIGN	COLOR	REMARKS
E1- EIFS COLOR 1 (1.5" FOAM)	DRYVT OUTSULATION PLUS MD	BM*2061-20 COBALT BLUE	QUARTZPUTZ
E2- EIFS COLOR 2 (1.5" FOAM)	DRYVT OUTSULATION PLUS MD	BM*00-141 CHINA WHITE	SANDPEBBLE
E3- EIFS COLOR 3 (3.0" FOAM)	DRYVT OUTSULATION PLUS MD	BM*2137-80 GRAY OWL	QUARTZPUTZ
E4- EIFS COLOR 4 (7.5" FOAM)	DRYVT OUTSULATION PLUS MD	BM*HC-169 COVENTRY GRAY	SANDPEBBLE
E5- EIFS COLOR 5 (1.5" FOAM)	DRYVT OUTSULATION PLUS MD	BM*AC-27 GALVESTON GRAY	SANDPEBBLE
FC1- FIBER CEMENT	NICHHA VINTAGEWOOD	REDWOOD	HORIZONTAL
B1- FACE BRICK (MODULAR SIZE)	BORAL BRICK	STONE MOUNTAIN	RUNNING BOND
COLORS		MATCH BRICK	STANDARD COLORS
PARAPET COPINGS	BERRIDGE/KYNAR	MATCH COLOR BELOW	PREFINISHED STEEL
GUTTERS & DOWNSPOUTS	BERRIDGE/KYNAR	MATCH ADJACENT COLOR	PREFINISHED STEEL
ALUMINUM RAILING	COMMERCIAL GRADE	DARK BRONZE	BAKED ENAMEL ALUMINUM
POLYCARBONATE AWNING	DUO-GUARD	SEE A553/02	ANODIZED ALUMINUM
WINDOWS/INTEGRAL PTAC GRILLES		DARK BRONZE	ANODIZED ALUMINUM
STOREFRONT		DARK BRONZE	ANODIZED ALUMINUM
ALUMINUM DOORS		DARK BRONZE	ANODIZED ALUMINUM
HOLLOW METAL DOORS & FRAMES		MATCH ADJACENT COLOR	FACTORY PRIME/FIELD PAINT
WALL LOUVERS		MATCH ADJACENT COLOR	FIELD PRIME/PAINT HIGH GLOSS
GAS PIPES, TEST DRAINS, ETC.		MATCH ADJACENT COLOR	FIELD PRIME/PAINT HIGH GLOSS
GAS PIPES ON ROOF		BLACK OR GRAY	FIELD PRIME/PAINT HIGH GLOSS
LIGHT FIXTURES		SEE 'E' DRAWINGS	PREFINISHED
DUMPSTER STEEL GATE AND POSTS		MATCH EIFS COLOR 1	FIELD PRIME/PAINT HIGH GLOSS
DUMPSTER STEEL BOLLARDS		MATCH EIFS COLOR 1	FIELD PRIME/PAINT HIGH GLOSS
DUMPSTER ENCLOSURE INTERIOR		MATCH EIFS COLOR 1	EIFS SKIM COAT
FLAG POLE		CLEAR	ANODIZED ALUMINUM
SEALANT		MATCH ADJACENT COLOR	SEE NOTES, SHEET A401
*COLOR FOR MATCHING	BENJAMIN MOORE	BM # SEE ABOVE	MIX EIFS COLOR TO MATCH

\*COLORS BASED ON OWNER DIRECTIVE AND ARE SUBJECT TO CHANGE. SAMPLES AND MOCKUPS ARE REQUIRED.  
 \*COLORS ARE GENERAL DESCRIPTIONS. EXACT COLORS SHALL BE SELECTED BY OWNER DURING SUBMITTAL REVIEW.  
 \*MANUFACTURERS ARE NOT LIMITED TO BASIS OF DESIGN. EQUIVALENT PRODUCTS ARE ACCEPTABLE.

SHEET NOTES

- CONTRACTOR SHALL PROVIDE SUPPORT STRUCTURE, 5/8" PLYWOOD BACKING FOR MOUNTING OF SIGN AND CONNECT ELECTRICAL CIRCUITS FOR OWNER FURNISHED AND INSTALLED FACADE-MOUNTED SIGNS. NO EXPOSED ELECTRICAL CONDUIT OR BOXES ALLOWED.
- CONCEALED SPACES CREATED BY PLASTERS, TOWER, DUAL WALLS AND OTHER DESIGN FEATURES SHALL BE FIREBLOCKED VERTICALLY AT ALL FLOOR AND ROOF DECKS AND HORIZONTALLY NOT TO EXCEED 10'-0". FIREBLOCKING SHALL BE EITHER 3/4" WOOD PANELS WITH JOINTS BACKED BY 3/4" WOOD PANELS OR 5/8" TYPE X GLASS FIBER FACED GYPSUM SHEATHING BOARD.
- SEAL ALL PENETRATIONS THROUGH EXTERIOR WALLS WITH SEALANT MATCHING COLOR OF ADJACENT WALL FINISH MATERIAL.
- SEAL DOOR AND WINDOW FRAMES WITH SEALANT MATCHING COLOR OF FRAME.
- FIELD PAINT THE FOLLOWING:  
 A. HOLLOW METAL DOORS AND FRAMES  
 B. GAS PIPES AND SPRINKLER TEST DRAINS (ON ROOF ALSO)  
 C. AIR INTAKE AND EXHAUST GRILLES  
 D. BOLLARDS  
 E. DUMPSTER STEEL GATE POSTS AND FRAME  
 F. MISCELLANEOUS AS DIRECTED BY ARCHITECT



ISSUE DATE 05-30-19  
 REVISION LOG

HAMPTON INN  
 NEW HOTEL  
 ASHLAND CITY, TENNESSEE  
 WWW.DAVIDRCARTER.NET  
 DAVID R. CARTER AND ASSOCIATES

EXTERIOR ELEVATIONS A401