

ELEVATOR CAR E1 AND E2

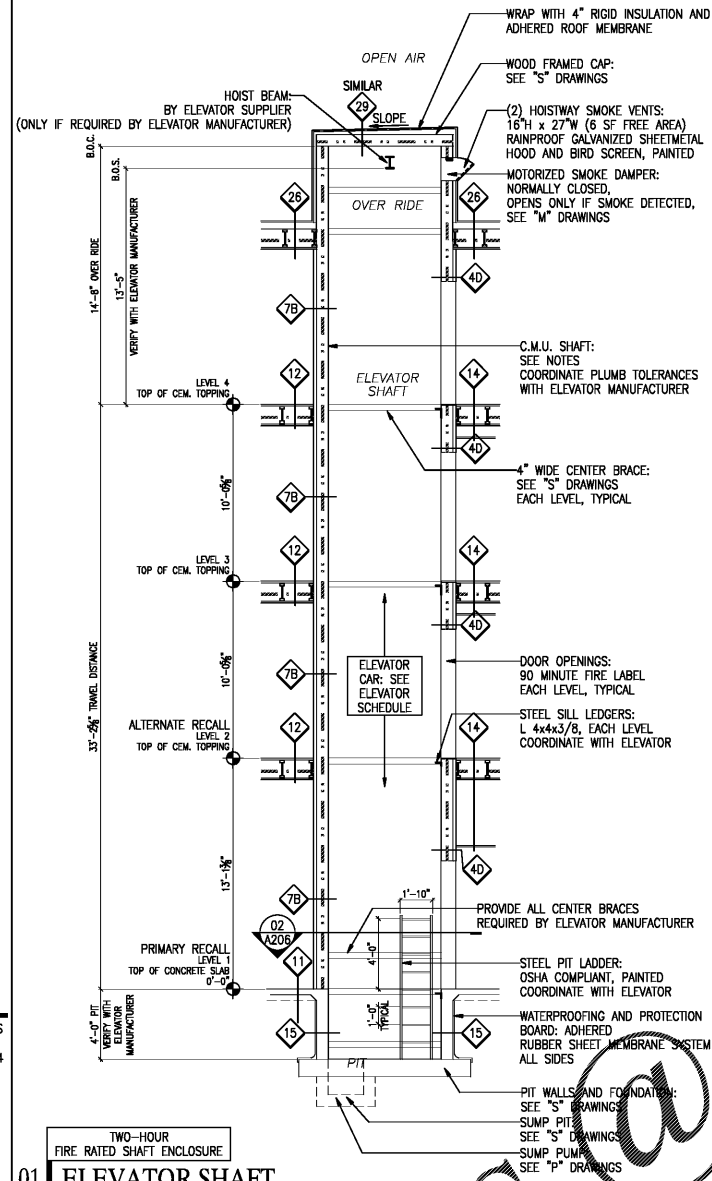
WHEELCHAIR ACCESSIBLE ELEVATOR A.D.A. NARRATIVE

1. PROVIDE MINIMUM CLEAR DIMENSIONS INSIDE CAB AND AT DOORWAY AS INDICATED IN PLAN ABOVE.
2. ELEVATOR CAB CONTROL FLOOR BUTTONS SHALL BE A MAXIMUM OF 54 INCHES ABOVE THE CAB FLOOR FOR A SIDE APPROACH AND MAXIMUM 48 INCHES ABOVE THE CAB FLOOR FOR A FRONT APPROACH.
3. EMERGENCY CONTROLS SHALL BE A MAXIMUM OF 35 INCHES ABOVE THE CAB FLOOR.
4. CONTROL BUTTONS SHALL BE A MINIMUM OF 3/4 INCH IN THEIR SMALLEST DIMENSION.
5. CONTROL BUTTONS SHALL BE DESIGNATED BY STANDARD ARABIC NUMERALS AS REQUIRED IN ANSI/ASME A17.1-1996 AND LOCATED TO THE LEFT OF THE CORRESPONDING CONTROL BUTTON.
6. VISUAL AND AUDIBLE CAR POSITION INDICATORS SHALL BE PROVIDED TO SOUND AT EACH FLOOR.
7. MANUFACTURER AND INSTALLER SHALL COMPLY WITH ALL ELEVATOR REQUIREMENTS OF THE A.D.A.

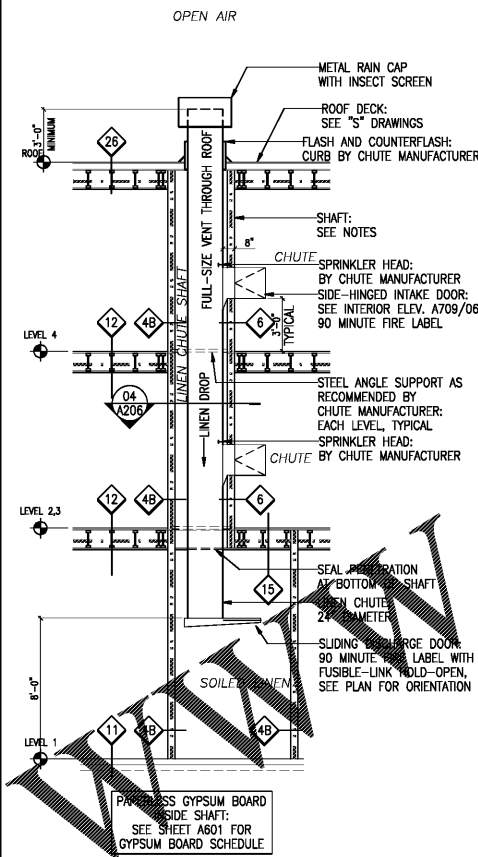
ELEVATOR SCHEDULE

ITEM	DESCRIPTION
TYPE	MACHINE-ROOM-LESS HYDRAULIC AND CONTROL-ROOM-LESS
LOAD CAPACITY: E1	3,500 POUNDS
LOAD CAPACITY: E2	2,500 POUNDS
RATED SPEED	150 FPM, MINIMUM
REGENERATIVE DRIVE	NO
BATTERY LOWERING	YES
CAR OPERATING PANEL	STANDARD
CAR FRONT WALL	SATIN STAINLESS STEEL
CAR SIDE AND REAR WALL PANELS	PLASTIC LAMINATE (SEE BELOW)
CAR WALL REVEALS	BLACK ENAMEL
CAR DOOR INTERIOR FACE	SATIN STAINLESS STEEL
CAR DOOR SILL	ALUMINUM
CAR FLOOR	CERAMIC (MATERIAL TO BE DETERMINED)
CAR CEILING (8' HIGH)	SATIN STAINLESS STEEL
CAR LIGHTING	LOW VOLTAGE DOWN LIGHTS
CAR HANDRAILS (SIDES AND REAR)	ROUND SATIN STAINLESS STEEL
CAR WALL PROTECTION BLANKETS (BOTH CARS)	BOOKS ON FOUR WALLS AND TOP OF FULL-HEIGHT BLANKETS
HOISTWAY ENTRANCE	42"
HOISTWAY DOOR TYPE	SINGLE SPEED SIDE SLIDING
HOISTWAY DOOR FRAME	SATIN STAINLESS STEEL
HOISTWAY DOOR FACE	SATIN STAINLESS STEEL
HOISTWAY DOOR SILL	ALUMINUM
HALL FIXTURES	SATIN STAINLESS STEEL
ACCOMMODATE AMBULANCE STRETCHER	E1, PER BUILDING CODE
EMS "STAR OF LIFE" SYMBOL	E1, BOTH JAMBS, ALL LEVELS
REAR DOOR ACCESS CONTROL	E1, RFID
BASIS OF DESIGN	THYSSEN KRUPP ENDURA MRL

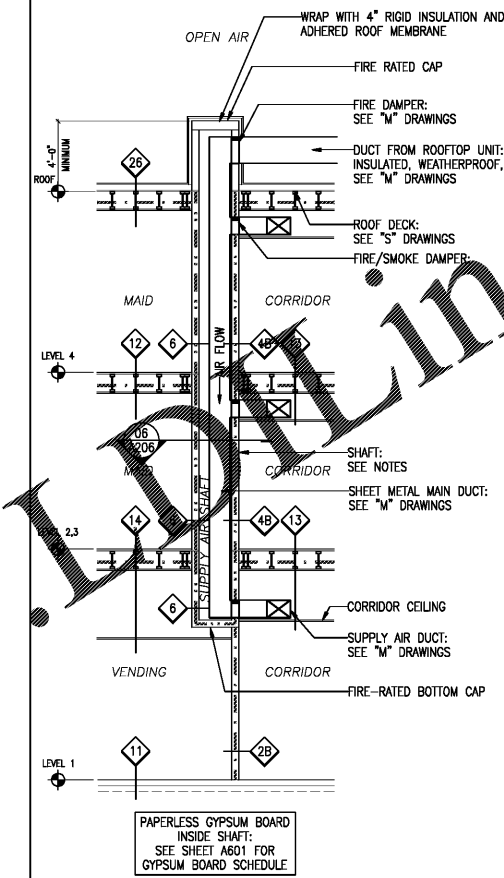
- SEE SPECIFICATIONS FOR OTHER REQUIREMENTS.
- SEE SHEET A801 FOR SIGNAGE.
- PLASTIC LAMINATE SHALL BE SELECTED BY INTERIOR DESIGNER FROM ELEVATOR MANUFACTURER'S STANDARD SELECTION.



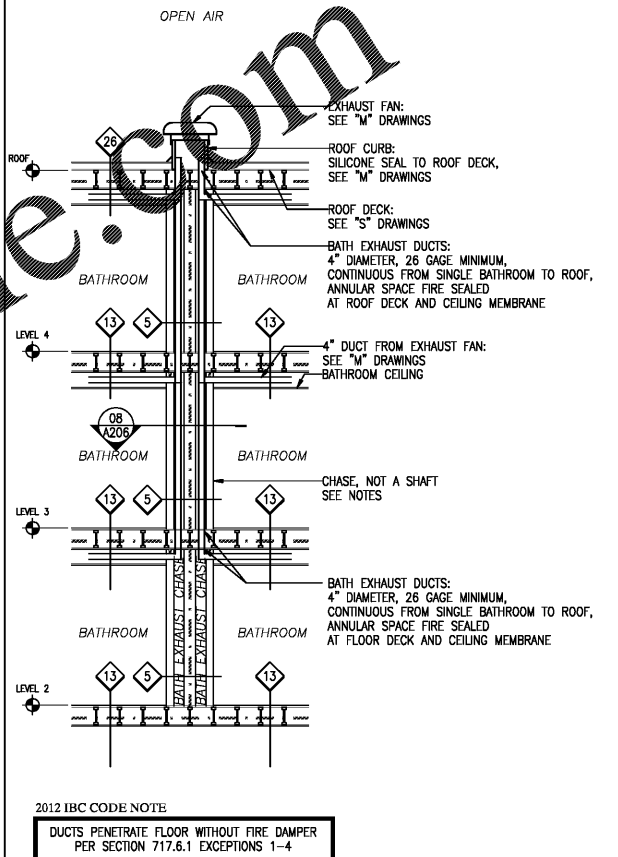
01 ELEVATOR SHAFT



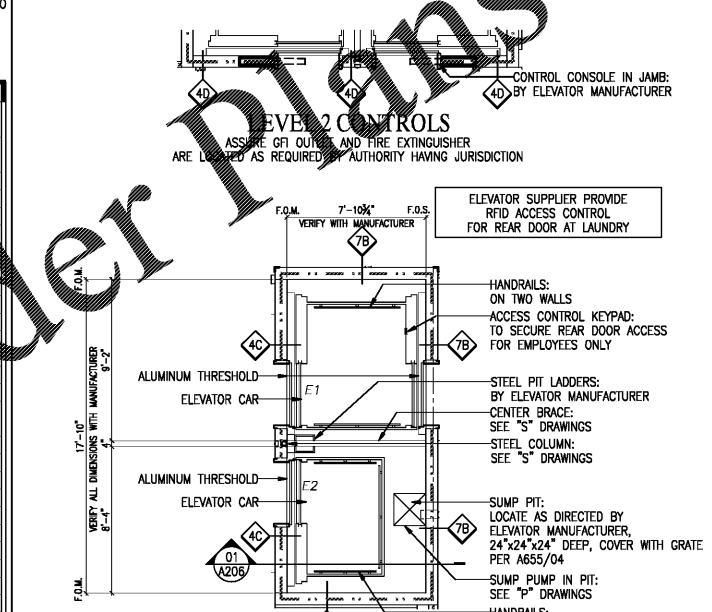
03 LINEN CHUTE SHAFT



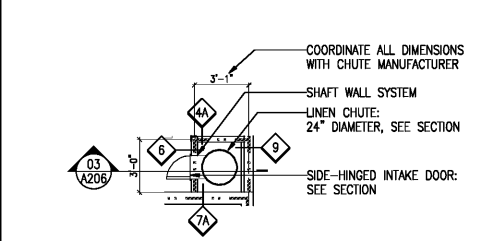
05 SUPPLY AIR SHAFT



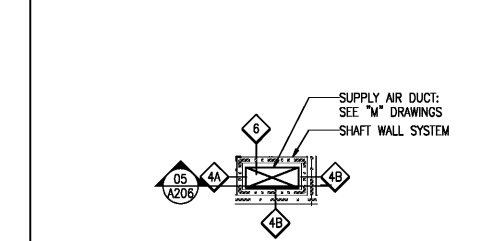
07 BATH EXHAUST CHASE



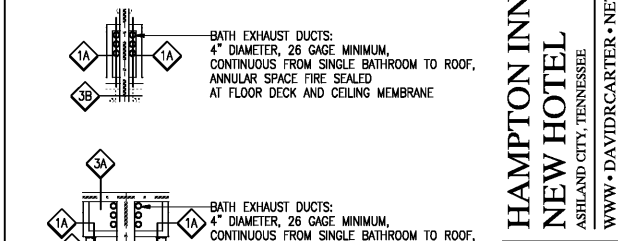
02 ELEVATOR SHAFT



04 LINEN CHUTE SHAFT



06 SUPPLY AIR SHAFT



08 BATH EXHAUST CHASE

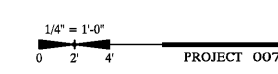
SHEET NOTES

1. TOP OF SHAFTS SHALL EXTEND CONTINUOUSLY TO ROOF DECK OR BE SEALED WITH FIRE-RATED ASSEMBLY EQUAL TO FIRE-RATING OF THE SHAFT.
2. BOTTOMS OF SHAFTS SHALL EXTEND TO FLOOR DECK OR BE SEALED WITH FIRE-RATED ASSEMBLY EQUAL TO FIRE-RATING OF THE SHAFT.
3. COORDINATE ALL SHAFT OPENINGS WITH CONCRETE PLANK MANUFACTURER.
4. COMBUSTIBLE MATERIALS ARE NOT PERMITTED INSIDE SHAFTS.

IBC CODE NOTE

SEE BUILDING CODE FOR DEFINITION OF A "SHAFT." A SHAFT IS NOT A CHASE.

ISSUE DATE: 05-30-19
REVISION LOG



SHAFTS AND CHASES A206

HAMPTON INN
NEW HOTEL
ASHLAND CITY, TENNESSEE
WWW.DAVIDRCARTER.NET
DAVID R. CARTER AND ASSOCIATES



30 x 42