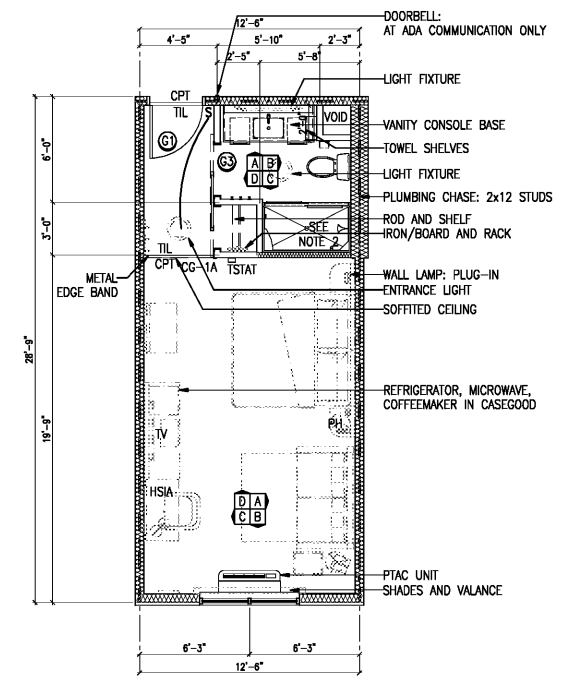
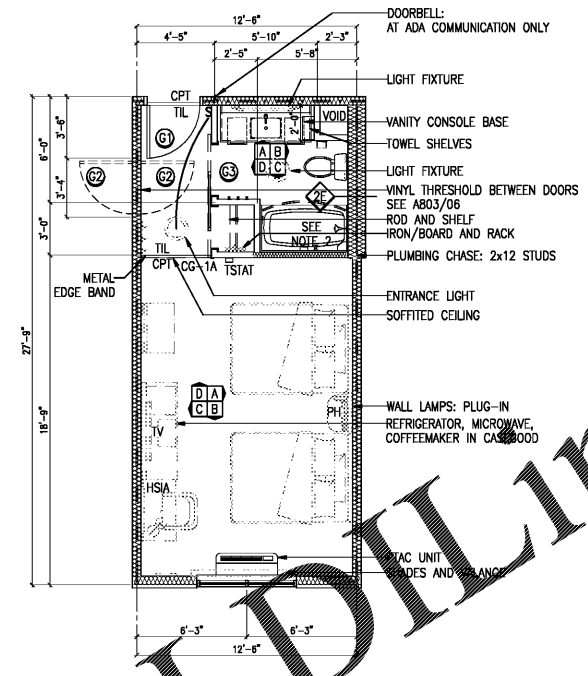


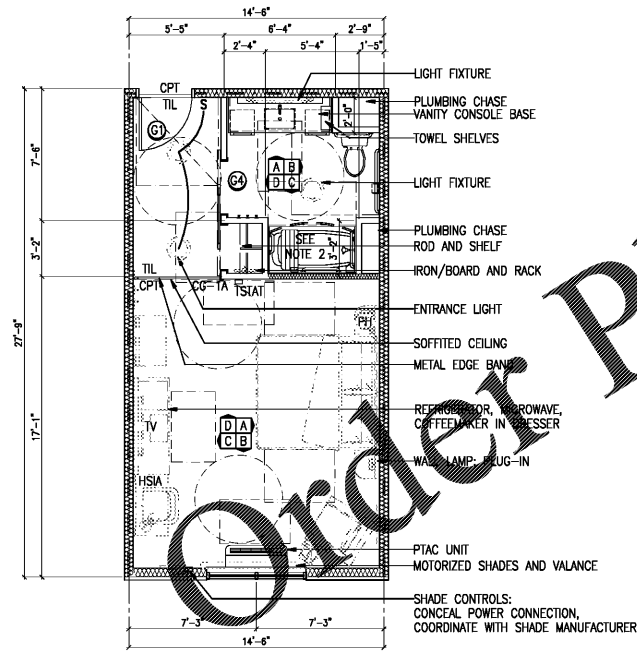
01 KING ROOM ADA COMMUNICATION FEATURES (WHERE INDICATED ON BUILDING PLAN)



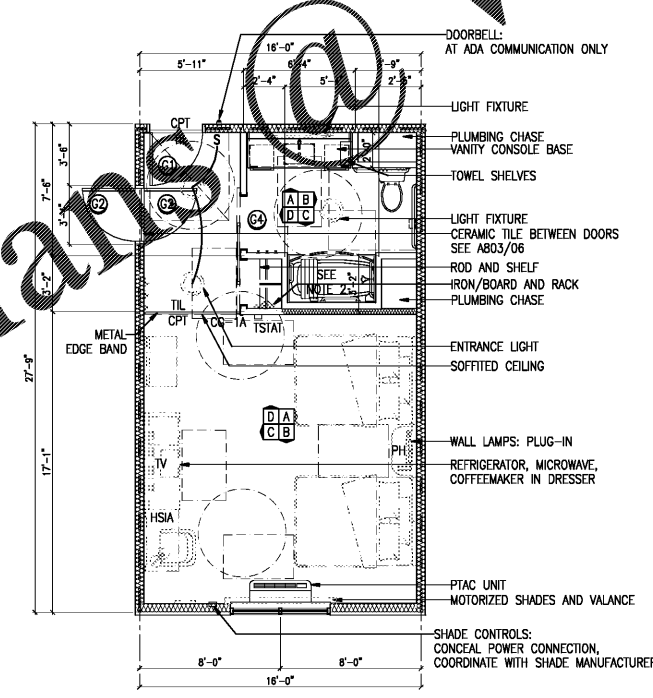
02 KING SOFA ROOM WIDE KING SOFA ROOM SIMILAR ADA COMMUNICATION FEATURES (WHERE INDICATED ON BUILDING PLAN)



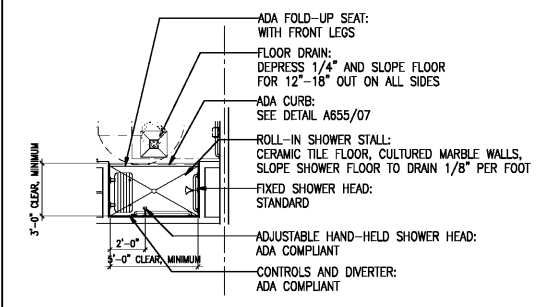
03 QUEEN/QUEEN ROOM WIDE QUEEN/QUEEN ROOM SIMILAR ADA COMMUNICATION FEATURES (WHERE INDICATED ON BUILDING PLAN)



04 KING ROOM ADA MOBILITY FEATURES (ROLL-IN-SHOWER WHERE INDICATED ON BUILDING PLAN)



05 QUEEN/QUEEN ROOM ADA MOBILITY FEATURES (WHERE INDICATED ON BUILDING PLAN)



06 ROLL-IN-SHOWER ADA COMMUNICATION FEATURES (WHERE INDICATED ON BUILDING PLAN)

ADA MOBILITY FEATURES GUEST UNIT NARRATIVE (SEE "E" AND "F" DRAWINGS AND INTERIOR ELEVATIONS)

1. MOUNT PTAC THERMOSTAT IN ACCESSIBLE LOCATION.
2. MOUNT CLOSET SHELVING IN ACCESSIBLE LOCATION.
3. MOUNT IRON AND IRONING BOARD IN ACCESSIBLE LOCATION.
4. MOUNT POWER OUTLETS AND LIGHT SWITCHES IN ACCESSIBLE LOCATIONS.
5. CONTROLS SHALL NOT REQUIRE PINCHING OR TWISTING OF WRIST.
6. PROVIDE ACCESSIBLE DOORWAYS.
7. PROVIDE ACCESSIBLE PLUMBING FIXTURES.
8. PROVIDE PUSH-DOWN/PUSH-UP TUB STOPPER.
9. PROVIDE ACCESSIBLE TOILET ACCESSORIES.
10. PROVIDE ACCESSIBLE CABINETWORK.
11. PROVIDE ACCESSIBLE DRAPERY WANDS.

ADA COMMUNICATION FEATURES GUEST UNIT NARRATIVE (SEE "E" DRAWINGS AND INTERIOR ELEVATIONS)

1. CONNECTIVITY STRIP INTEGRAL TO NIGHTSTAND FOR TTY POWER.
2. PROVIDE HORN-STROBE BUILDING FIRE ALARM.
3. PROVIDE HORN-STROBE SMOKE DETECTOR.
4. PROVIDE PHONE RING STROBE AT EACH PHONE LOCATION.
5. PROVIDE DOORBELL STROBE.
6. PROVIDE ADDITIONAL BUILDING FIRE ALARM-SMOKE DETECTOR STROBE AND DOORBELL STROBE IN BATHROOMS OF ALL UNITS AND BEDROOM OF TWO-ROOM SUITES.

TYPICAL WALL ASSEMBLY SCHEDULE

TYPE	TYPICAL LOCATION
1A	TYPICAL INTERIOR WALLS, NOT-FIRE-RATED, 3-5/8" STUDS
3B	CORRIDOR WALLS, FIRE-AND-SOUND-RATED
3B	STUD WALLS BETWEEN GUEST UNITS, FIRE-AND-SOUND-RATED
2E	PLUMBING CHASE WALLS AT GUEST UNITS, FIRE-AND-SOUND-RATED

- FOR ASSEMBLY TYPE DETAILS, SEE SHEET A601-604.
- ALL FURR-DOWNS ARE STUDS AT 16" O.C. WITH 5/8" GYPSUM BOARD ONE SIDE.

SHEET NOTES

1. SOME SUITES AND ROOMS VARY FROM THESE PLANS. CONTRACTOR SHALL FIELD COORDINATE ALL VARIATIONS. SEE BUILDING PLANS.
2. COORDINATE FINAL TUB OR SHOWER PAN ROUGH OPENING WITH TUB/PAN MANUFACTURER, GYPSUM BOARD THICKNESS, FURRING, ETC.
3. MOCK-UP ELECTRICAL ROUGH-IN IN ONE OF EACH TYPE OF GUEST UNIT FOR OWNER'S REVIEW AND COORDINATION WITH FURNITURE. RELOCATE BOXES AS DIRECTED BY OWNER, AND CONSTRUCT REMAINING ROOMS AS APPROVED. COORDINATE OFFSET BOXES ON OPPOSITE SIDES OF ONE-HOUR FIRE-RATED STUD WALLS WITH DETAIL A603/01.
4. PROVIDE ACOUSTICAL SEALANT AT ALL ELECTRICAL BOXES AND PERIMETER OF GUEST UNIT-GUEST UNIT WALLS. PECORA AC-20FR OR EQUIVALENT. FOR OWNER FURNISHED-OWNER INSTALLED ITEMS AND OWNER FURNISHED-CONTRACTOR INSTALLED ITEMS, SEE SHEET G102.
5. SOUND BATT INSULATION WHERE INDICATED. SEE ASSEMBLY TYPES. ALSO SEE A101.
6. WALL-HUNG VANITY CONSOLES ARE CONTRACTOR INSTALLED. COORDINATE BLOCKING AND FASTENING WITH MANUFACTURER. COORDINATE SINK AND FAUCET PIPING.
7. HAIRDRYER IS PLUG-IN. HAIRDRYER WILL BE LOOSE AND LOCATED ON VANITY SHELF.
8. BATHROOM NIGHTLIGHT IS IN LIGHT SWITCH. SEE "E" DRAWINGS.
9. FOR FURNISHINGS NOT NOTED HERE, SEE INTERIOR ELEVATIONS.
10. FOR DIMENSIONS RELATING TO FURNISHINGS AND ELECTRICAL DEVICES, SEE INTERIOR ELEVATIONS.
11. PROVIDE ON-OFF SWITCH FOR DOORBELL AND ENGRAVED PLASTIC SIGN. SEE A802/01.

HAMPTON INN
NEW HOTEL
ASHLAND CITY, TENNESSEE
WWW.DAVIDRCARTER.NET
DAVID R. CARTER AND ASSOCIATES



ISSUE DATE 05-30-19
REVISION LOG



PROJECT 00755

GUEST UNIT PLANS- ENLARGED A204

WWW.LDLINE.COM

Order Plans

30 x 42