

02 | DUMPSTER SCREEN / STORAGE

HVAC/ELECTRICAL LEGEND

- = LIGHT FIXTURE, CEILING MOUNTED, RECESSED FLUORESCENT
- = LIGHT FIXTURE, CEILING MOUNTED, SURFACE
- = LIGHT FIXTURE, CEILING MOUNTED, PENDANT
- = LIGHT FIXTURE, CEILING MOUNTED, RECESSED, WALL WASH
- = LIGHT FIXTURE, CEILING MOUNTED, RECESSED, SPOT
- = LIGHT FIXTURE, WALL MOUNTED
- = LINEAR SLOT SUPPLY AIR DIFFUSER
- = SUPPLY AIR DIFFUSER
- = RETURN AIR OR EXHAUST GRILLE

CEILING PLAN LEGEND

- NONE
- PAINTED OR UNPAINTED STRUCTURE SEE FINISH SCHEDULE
- SUSPENDED CEILING GRID AND PANELS
- GYPSUM BOARD
- EIFS
- FIBER-CEMENT WOODGRAIN PANELS
- POLYCARBONATE TRANSLUCENT PANELS
- EIFS V-GROOVE JOINT
- GYPSUM BOARD CONTROL JOINT

CEILING PLAN KEY

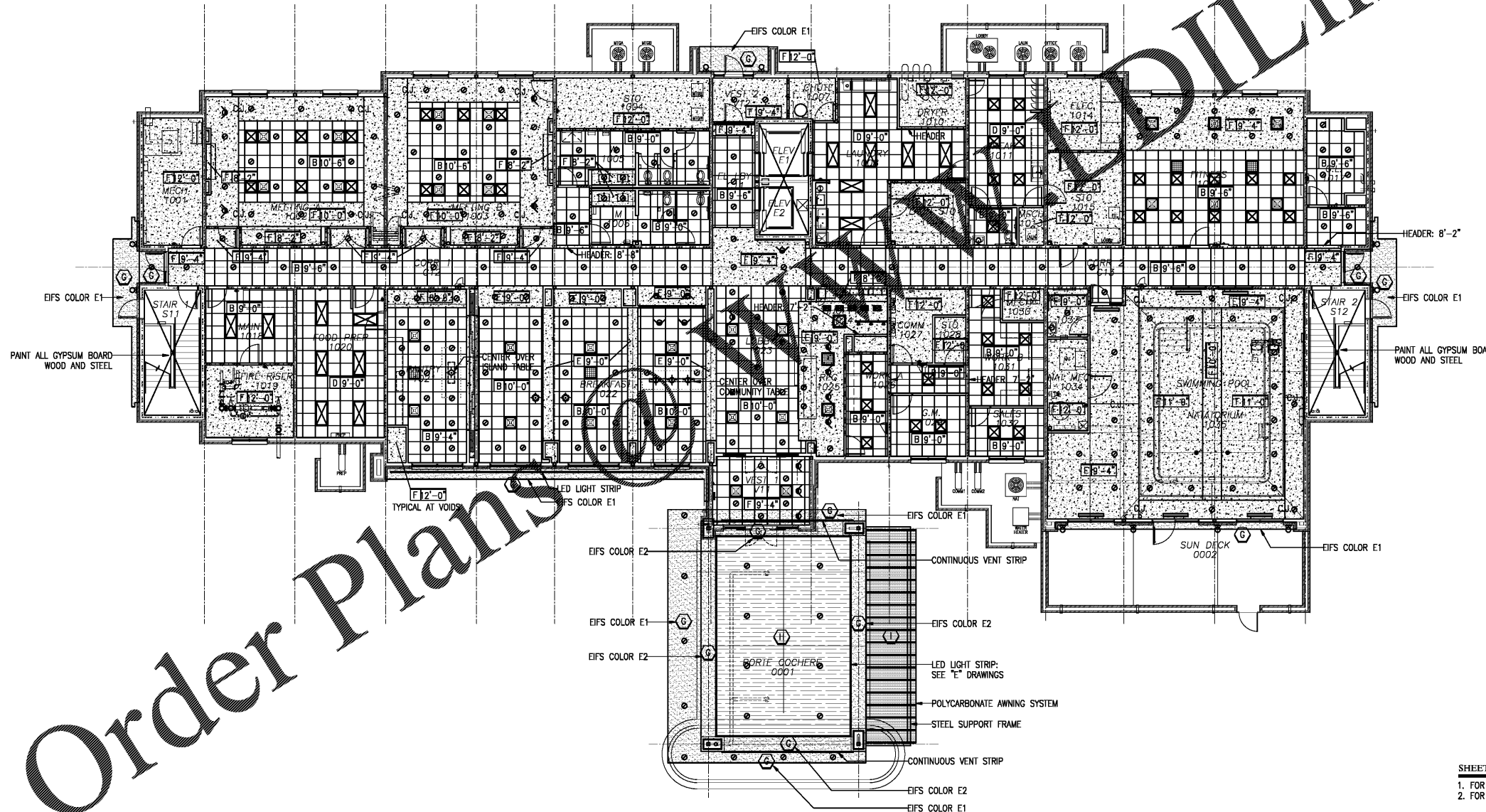
- (A) EXPOSED STRUCTURE, SEE FINISH SCHEDULE
- (B) AC-1, SEE SUSPENDED CEILING SCHEDULE A901
- (C) NOT USED
- (D) AC-2, SEE SUSPENDED CEILING SCHEDULE A901
- (E) SUSPENDED GYPSUM BOARD, PAINTED
- (F) GYPSUM BOARD ON SOFFIT, JOISTS OR TRUSS FRAMING, PAINTED
- (G) EIFS ON GYPSUM BOARD SUBSTRATE
- (H) FIBER-CEMENT WOODGRAIN PANELS
- (I) POLYCARBONATE TRANSLUCENT PANELS
- (X) (Y) (Z) CEILING TYPE PER KEY WITH HEIGHT ABOVE FINISH FLOOR

SHEET NOTES

1. NOT ALL HVAC SUPPLY AIR DIFFUSERS (SAD) AND RETURN AIR GRILLES (RAG) ARE SHOWN HERE. SEE "M" DRAWINGS.
2. NOT ALL LIGHT FIXTURES ARE SHOWN HERE. SEE "L" DRAWINGS.
3. FOR SPRINKLER HEADS, SEE "FP" DRAWINGS. CENTER HEADS ON CEILING PANELS, SPACED AS REQUIRED BY NFPA 13.
4. WHERE CONFLICT OCCURS BETWEEN THIS DRAWING AND "M" OR "L" DRAWING, "M" AND "L" DRAWINGS SHALL GOVERN THE QUANTITY AND PROVISION OF PRODUCTS.
5. CONTRACTOR SHALL FIELD COORDINATE GRID LAYOUT WITH LIGHTS, SPRINKLER HEADS, DIFFUSERS, EXIT SIGNS, ETC. TO PROVIDE A SYMMETRICAL PATTERN, EQUALLY SPACED AND EVENLY ILLUMINATED. SEE "M" AND "L" DRAWINGS.
6. FOR TYPICAL GUEST UNITS, SEE A162.
7. FOR HEIGHTS OF COFFERS, SOFFITS, BULKHEADS AND FURR-DOWNS, SEE BUILDING SECTIONS, DETAILS AND INTERIOR ELEVATIONS.
8. HEIGHT OF HEADERS 7'-2" A.F.F., UNLESS INDICATED OTHERWISE.
9. IN LEVEL 1 GUEST UNITS, SUSPEND GYPSUM BOARD CEILINGS SAME HEIGHT AS UPPER FLOOR TYPICAL GUEST UNIT CEILINGS. THIS SUSPENDED CEILING IS IN ADDITION TO GYPSUM BOARD REQUIRED FOR FIRE-RATED FLOOR-CEILING ASSEMBLY.
10. ALL LIGHT FIXTURES, BOTH CEILING AND WALL MOUNTED, SHALL BE EQUALLY SPACED WHEN PART OF A GROUP. SHALL BE HORIZONTALLY CENTERED IF ON A COLUMN, ABOVE A SINK, ABOVE A COUNTER, BETWEEN WINDOWS IF ON A WALL, ETC. IN NO CASE SHALL FIXTURES BE MOUNTED ON CLOSEST FRAMING ELEMENT WHEN THE RESULT IS NOT BE SYMMETRICAL OPTIMUM. THE INTENT IS FOR AN ARCHITECTURALLY CORRECT FINAL INSTALLATION. ASK ARCHITECT IF A QUESTION OF INTERPRETATION ARISES. NO COST ADJUSTMENTS WILL BE ALLOWED AT ANY STAGE OF WORK FOR RELOCATING IMPROPERLY POSITIONED LIGHT FIXTURES IN THE SOLE OPINION OF THE OWNER OR ARCHITECT.
11. THE OWNER WANTS CORRIDOR, LOBBY, BREAKFAST, MEETING AND FITNESS CEILINGS AND SOFFITS AS HIGH AS PRACTICABLE. COORDINATE ALL PIPES, DUCTS AND CONDUITS TO ALLOW SUSPENDED CEILING AND SOFFIT HEIGHTS TO BE RAISED HIGHER THAN THE HEIGHTS INDICATED ON THESE DRAWINGS. HOWEVER, ALWAYS MAINTAIN SAME DIFFERENTIAL BETWEEN CEILINGS AND SOFFITS FOR AESTHETIC IMPACT.
12. PLUMBING SHUT-OFF VALVES SHALL BE LOCATED NO HIGHER THAN 16" ABOVE CEILING GRID OR GYPSUM BOARD ACCESS PANEL.
13. PROVIDE GFRG ACCESS PANELS IN GYPSUM BOARD CEILINGS AT DAMPER AND SPRINKLER VALVE LOCATIONS. SEE A653/11. QUANTITY AND LOCATION SHALL BE DETERMINED IN THE FIELD. POSITION VALVES AND DAMPERS TO MINIMIZE NUMBER OF ACCESS PANELS. SEE SPECIFICATIONS FOR ACCESSIBLE PRODUCTS. PAINT ACCESS PANELS TO MATCH CEILING COLOR.

FIRE RESISTANCE RATED CONSTRUCTION

- 1-HOUR FIRE-RATED ASSEMBLY
 - A. FIRE BARRIERS: SEE A603/07
 - B. FIRE PARTITIONS: SEE A603/06
 - C. STRUCTURAL PROTECTION
 - 2-HOUR FIRE-RATED ASSEMBLY
 - A. FIRE BARRIERS
- FOR ENTIRE SCHEDULE, SEE SHEET A101



Order Plans

HAMPTON INN
NEW HOTEL
ASHLAND CITY, TENNESSEE
WWW.DAVIDRCARTER.NET
DAVID R. CARTER AND ASSOCIATES



- SHEET NOTES
1. FOR NOTES AND SCHEDULES, SEE SHEET A161.
 2. FOR TYPICAL GUEST UNITS, SEE SHEET A162.
- ISSUE DATE 05-30-19
REVISION LOG



LEVEL 1 REFLECTED CEILING PLAN A161

30 x 42
01 | LEVEL 1