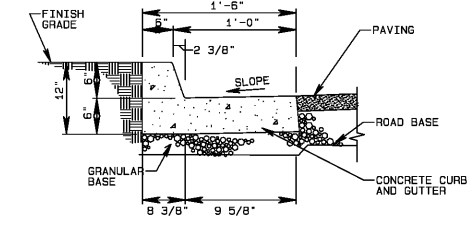


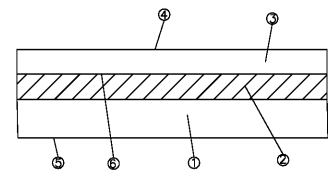
CURB AND GUTTER (REJECTING WATER)
NO SCALE



CURB AND GUTTER (ACCEPTING WATER)
NO SCALE

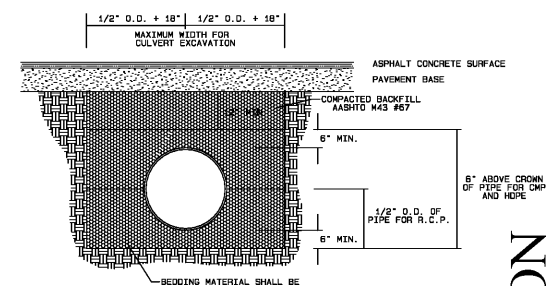
CURB AND GUTTER

- NOTES:
1. EXPANSION JOINTS TO BE SPACED A MAXIMUM OF 100' APART.
 2. EXPANSION JOINTS WILL ALSO BE REQUIRED AT TANGENT POINTS, DRIVEWAY LOCATIONS, AND INLETS.
 3. CONSTRUCTION JOINTS ARE TO BE CUT INTO CURB AND GUTTER EVERY 10' TO A DEPTH OF D/4.
 4. FOR PAVEMENT THICKNESS SEE PAVING DETAIL.
 5. CONTRACTOR SHALL COORDINATE WITH GRADING PLAN FOR TRANSITION BETWEEN CURBS.
 6. CONCRETE SHALL BE 4000 PSI @ 28 DAYS REQUIRED STRENGTH.

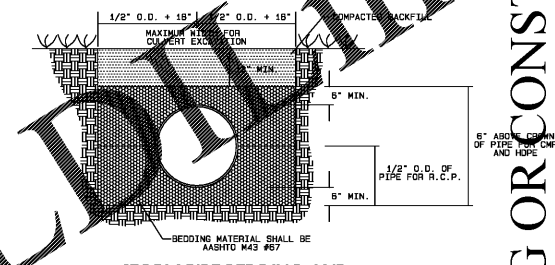


1. STONE @ 10.00" +/- THICK
303-01 MINERAL AGGREGATE TYPE A BASE GRADING "D"
2. BASE(MODIFIED) @ 4.00" +/- THICK (APPROX 678.00 LBS. / S.Y.)
307-03.15 BITUMINOUS PLANT MIX (HOT MIX) (BPMB-HM) GRADING "A"
3. BINDER(MODIFIED) @ 2.00" +/- THICK (APPROX 226.00 LBS. / S.Y.)
307-03.15 BITUMINOUS PLANT MIX (HOT MIX) (BPMB-HM) GRADING "B"
4. SURFACE @ 1.25" +/- THICK (APPROX 132.50 LBS. / S.Y.)
411-01.01 MINERAL AGGREGATE FOR ASPHALTIC CONCRETE SURFACE (ACS) GRADING "D"
411-01.02 ASPHALT CEMENT FOR ASPHALTIC CONCRETE SURFACE (ACS) GRADING "D"
5. PRIME COAT
402-01 BITUMINOUS MATERIAL FOR PRIME COAT (PC) @ 0.30-0.35 GAL./S.Y.
402-02 AGGREGATE FOR COVER MATERIAL (PC) @ 8-12 LBS./S.Y.
6. TACK COAT
403-01 BITUMINOUS MATERIAL FOR TACK COAT (TC) @ 0.20 GAL./S.Y.

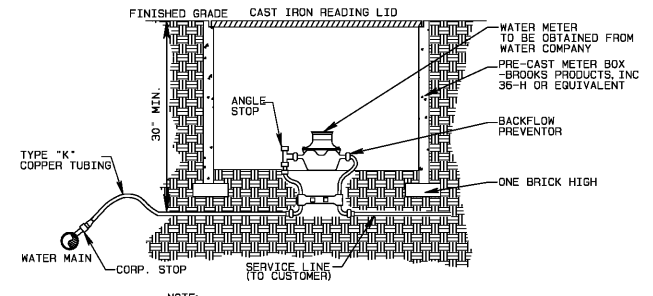
**TENNESSEE DEPARTMENT OF TRANSPORTATION
STANDARD PAVEMENT SECTION**
NO SCALE



STORM PIPE BEDDING AND BACKFILL IN IMPROVED AREA
NO SCALE

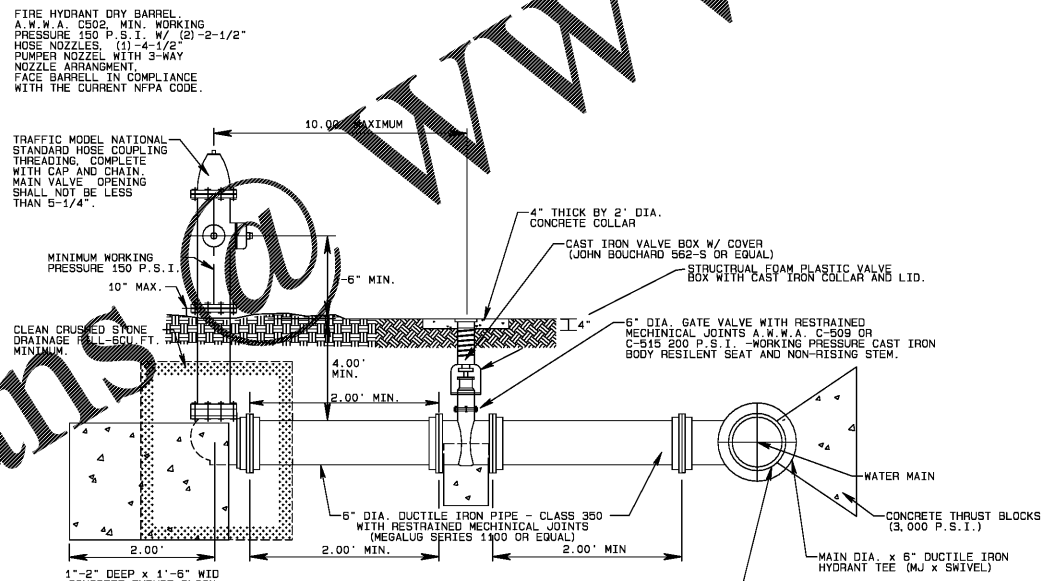


STORM PIPE BEDDING AND BACKFILL IN UNIMPROVED AREA
NO SCALE



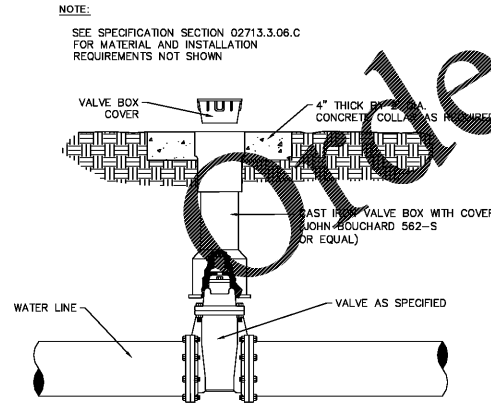
- NOTE:
- 1.) PLACE 3" DEEP OF CLEAN 1/2" TO 3/4" CRUSHED STONE IN BOTTOM OF METER BOX.
 - 2.) USE TAPPING SADDLE FOR PVC PIPE. NO TAPPING SADDLE REQUIRED WHEN CONNECTING SERVICE TO DTP.
 - 3.) METER BOXES SHALL NOT BE LESS THAN 10" DEEP. BOX SHALL BE PRECAST CONC. OR CAST IRON.

WATER METER
NO SCALE



- NOTE:
1. FIRE HYDRANT BARRELS SHALL BE FACED IN ACCORDANCE WITH THE CURRENT NFPA REGULATIONS.
 2. UTILIZE HYDRANT TEE WHERE POSSIBLE IN LIEU OF SPOOL BETWEEN VALVE AND TEE.

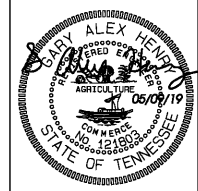
FIRE HYDRANT ASSEMBLY
NO SCALE



GATE VALVE DETAIL
NO SCALE

330 North 2nd Street
P.O. Box 949
Clarksville, TN 37041-0949
P: (931) 647-6959 • F: (931) 647-7135
visit us online: www.dbseng.com

DBS Associates Engineering
Engineers • Surveyors • Planners



HAMPTON INN
GENERAL SITE DETAILS
TN HWY 12, ASHLAND CITY
CHEATHAM COUNTY, TENNESSEE

NO.	ISSUED	DATE
1	PERMIT SET-TDEC	05/03/19
2	PERMIT SET-ASHLAND CITY	05/09/19

THIS DRAWING IS THE PROPERTY OF DBS & ASSOCIATES ENGINEERING, INC. AND IS NOT TO BE REPRODUCED OR COPIED IN WHOLE OR IN PART WITHOUT AUTHORIZATION FROM DBS & ASSOCIATES ENGINEERING, INC. IT IS TO BE USED FOR THE PROJECT AND SITE SPECIFICALLY IDENTIFIED HEREIN AND NOT TO BE USED ON ANY OTHER PROJECT. IT IS TO BE RETURNED UPON REQUEST. DO NOT SCALE DRAWINGS. WRITTEN OWNERSHIP TAKE PRECEDENCE ALL DRAWINGS AND DESIGNS SHOWN ON THESE DRAWINGS ARE COPYRIGHT © OF DBS & ASSOCIATES ENGINEERING, INC.

DRAWN BY: D. THARPE
CHECKED BY: A. HENRY

C 7.02

PROJECT NO.	CC 66780
PROJECT DATE	11/20/18

0:00:00 CC HAMPTON INN ASHLAND CITY (TECHNICAL) HAMPTON INN ASHLAND CITY, TENNESSEE (DWG) CITY, TENNESSEE (DWG) LOT 12, 05/09/19, 4:42 PM