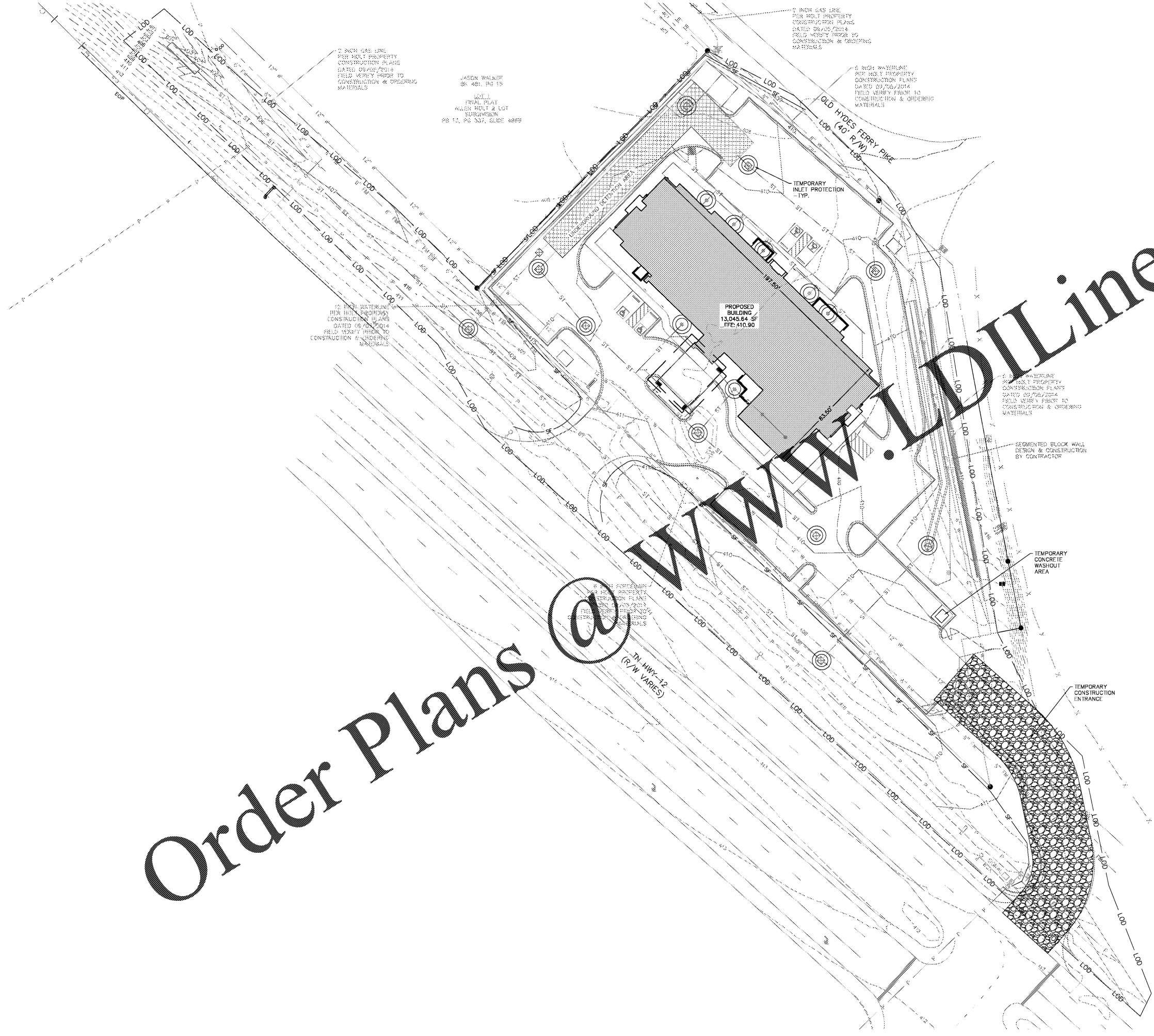


Order Plans @

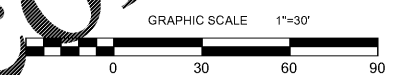
TN HWY-12
(R/W VARIES)



PERMIT SET - NOT FOR BIDDING OR CONSTRUCTION



VERTICALLY BASED ON
TENNESSEE STATE PLANNING COORDINATES
N.A.S. 83
GRID NORTH
VERTICAL DATUM: N.A.V.D. 88



NOTES:

- 1. CONTRACTOR SHALL REFERENCE SHEET C1.00 FOR ADDITIONAL EROSION CONTROL NOTES.
- 2. TOPOGRAPHIC INFORMATION AS PER BOUNDARY & PARTIAL TOPOGRAPHIC SURVEY DATED JULY 27, 2018 BY YOUNG-HOBBS AND ASSOCIATES.
- 3. THE LOCATION OF EXISTING PIPING AND UNDERGROUND UTILITIES, INCLUDING BUT NOT LIMITED TO GAS MAINS, WATER MAINS, SEWER MAINS, SERVICE LINES, ELECTRIC, TELEPHONE, AND CABLE DUCT LINES, ETC. AS SHOWN ON THE PLANS HAVE BEEN DETERMINED FROM THE BEST AVAILABLE INFORMATION, BY ACTUAL OR FURNISHED SURVEYS, AND TAKEN FROM THE RECORDS OF THE PARENT UTILITY COMPANIES DRAWINGS OF THE EXISTING FACILITIES. HOWEVER, THE DESIGNER DOES NOT ASSUME THE RESPONSIBILITY FOR THE POSSIBILITY THAT, DURING CONSTRUCTION, UTILITIES OTHER THAN THOSE SHOWN MAY BE ENCOUNTERED OR THAT ACTUAL LOCATION OF THOSE SHOWN MAY BE DIFFERENT FROM THE LOCATIONS DESIGNATED ON THE PLANS. THE CONTRACTOR SHALL VERIFY DEPTH, LOCATION, AND SIZE OF EXISTING UTILITIES PRIOR TO CONSTRUCTION AND ORDERING MATERIALS.
- 4. EROSION PROTECTION AND SEDIMENT CONTROL MEASURES ON THESE PLANS DEPICT MINIMUM INSTALLATIONS. IT SHALL BE THE RESPONSIBILITY OF THE CONTRACTOR TO MAINTAIN ADEQUATE EROSION CONTROL MEASURES TO ENSURE THAT NO SEDIMENT LEAVES THE SITE.
- 5. SPECIAL CARE SHALL BE TAKEN TO ENSURE NO SEDIMENT OR DEBRIS IS ALLOWED TO ENTER THE UNDERGROUND DETENTION SYSTEM. ANY SEDIMENT THAT ENTERS THE UNDERGROUND DETENTION SYSTEM SHALL BE REMOVED BY THE CONTRACTOR BY ANY MEANS NECESSARY.

SITE LEGEND

- BOUNDARY LINE
- PROPERTY LINE
- FENCE
- CONTOUR LINE
- OVERHEAD POWERLINE
- EDGE OF PAVEMENT
- PROPOSED CURB
- WATERLINE PER MAPS BY OTHERS
- GAS LINE PER MAPS BY OTHERS
- FORCEMAIN PER MAPS BY OTHERS
- PROPOSED STORM SEWER
- PROPOSED CONTOUR LINE
- TEMPORARY SILT FENCE
- TEMPORARY SEDIMENT TUBE
- LIMITS OF DISTURBANCE
- IRON PIN
- TRAFFIC SIGNAL POLE
- UTILITY POLE
- ELECTRIC METER
- WATER VALVE
- FIRE HYDRANT
- WATER METER
- GRATE INLET
- CLEAN OUT
- SIGN
- PROPOSED AREA DRAIN
- PROPOSED BUILDING
- PROPOSED HANDICAP PARKING NO PARKING AREA

TEMPORARY COVER SEEDING MIXTURES

| SEEDING DATES | GRASS SEED | PERCENTAGES |
|----------------------|------------------|-------------|
| January 1 to May 1 | Italian Rye | 33% |
| | Korean Lespedeza | 33% |
| May 1 to July 15 | Summer Oats | 34% |
| May 1 to July 15 | Sudan- Sorghum | 100% |
| | StamMillet | 100% |
| July 15 to January 1 | Balboa Rye | 67% |
| | Italian Rye | 33% |

330 North 2nd Street
P.O. Box 949
Clarksville, TN 37041-0949
P: (931) 647-6959 • F: (931) 647-7135
visit us online: www.dbsaeng.com

DBS & Associates Engineering
Engineers • Surveyors • Planners

HAMPTON INN
EROSION CONTROL PLAN PHASE I
TN HWY12, ASHLAND CITY
CHEATHAM COUNTY, TENNESSEE

| NO. | ISSUED | DATE |
|-----|-------------------------|----------|
| 1 | PERMIT SET-TOEC | 05/03/19 |
| 2 | PERMIT SET-ASHLAND CITY | 05/08/19 |
| | | |
| | | |
| | | |
| | | |
| | | |
| | | |
| | | |

THIS DRAWING IS THE PROPERTY OF DBS & ASSOCIATES ENGINEERING AND IS NOT TO BE REPRODUCED OR COPIED IN WHOLE OR IN PART WITHOUT AUTHORIZATION FROM DBS & ASSOCIATES ENGINEERING, INC. IT IS TO BE USED FOR THE PROJECT AND SITE SPECIFICALLY IDENTIFIED HEREIN AND IS NOT TO BE USED ON ANY OTHER PROJECT. IT IS TO BE RETURNED UPON REQUEST. DO NOT SCALE DRAWINGS. WRITE DIMENSIONS AND NOT RECORDS. ALL DRAWINGS AND DESIGN SHOWN ON THESE DRAWINGS ARE THE PROPERTY OF DBS & ASSOCIATES ENGINEERING, INC.

DRAWN BY: D. THARPE
CHECKED BY: A. HENRY

C 5.00

PROJECT NO. CC 66780
PROJECT DATE 11/20/18

© 2018 DBS & ASSOCIATES ENGINEERING, INC. ALL RIGHTS RESERVED. HAMPTON INN, ASHLAND CITY, TENNESSEE. PLOTTER: 5620164.343PM