

CODE ANALYSIS

Table with 2 columns: PRIMARY APPLICABLE CODES and FUNDAMENTAL BUILDING CODE ANALYSIS - IBC 2012. Lists various codes like 2012 INTERNATIONAL BUILDING CODE, 2003 ICC/ANSI A117.1, and IBC 2012 sections for occupancy, fire, and structural requirements.

FACILITY DATA

Table with 2 columns: MAIN BUILDING HEIGHT and MAIN BUILDING AREA. Includes data for zoning ordinance, building code, and area breakdown by level (Level 1-4, Total, etc.).

DRAWING CONVENTIONS

Table with 2 columns: ARCHITECTURAL TAGS AND SYMBOLS and ARCHITECTURAL DIMENSIONING. Lists symbols for window, door, note, column, etc., and dimensioning rules for exterior and interior walls.

TABLE OF CONTENTS

Table of Contents listing drawing sheets by category: GENERAL, CIVIL/LANDSCAPING, ARCHITECTURAL, STRUCTURAL, MECHANICAL, PLUMBING, FIRE PROTECTION, and ELECTRICAL.

DEVELOPMENT TEAM

Owner: D&S HOSPITALITY ASHLAND CITY, GP. Hotel Franchisor: HILTON HOTELS CORPORATION. Architect: DAVID R. CARTER AND ASSOCIATES. Structural/HVAC/Plumbing/Electrical Engineer: MARCH ADAMS AND ASSOCIATES, INC. Civil Engineer: DBS AND ASSOCIATES ENGINEERING, INC.

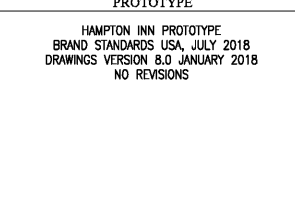
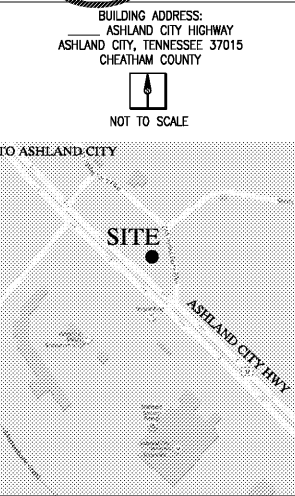
FUNDAMENTAL LIFE SAFETY CODE OCCUPANCY LOAD AND EXITING ANALYSIS - NFPA 101 2012. Table showing occupancy load calculations for various room types like residential, business, assembly, etc.

FUNDAMENTAL ENERGY CODE ANALYSIS - IECC 2012. Table showing energy code requirements for climate zone 4A, including envelope requirements for walls, roof, and windows.

FIRE PROTECTION SYSTEMS. Table detailing requirements for automatic sprinkler systems, fire alarm systems, and fire extinguishers.

GENERAL NOTES. Textual notes providing instructions and clarifications for the construction documents, covering topics like documents, trades, and inspections.

ROOM TYPE SUMMARY. Table summarizing room counts and areas for King Rooms, Queen/Queen Rooms, and other room types across different levels.



30 x 42

HAMPTON INN NEW HOTEL ASHLAND CITY, TENNESSEE



ISSUE DATE 05-30-19 REVISION LOG

PROJECT 00755

GENERAL G101