

STIPULATION FOR REUSE
 THIS DRAWING WAS PREPARED FOR THE PROJECT AND SITE SPECIFICALLY. IT IS NOT TO BE REPRODUCED, COPIED, REPRINTED, OR TRANSMITTED IN ANY FORM OR BY ANY MEANS, ELECTRONIC OR MECHANICAL, INCLUDING PHOTOCOPYING, RECORDING, OR BY ANY INFORMATION STORAGE AND RETRIEVAL SYSTEM, WITHOUT THE WRITTEN PERMISSION OF HARRISON FRENCH & ASSOCIATES, PLLC. ANY REUSE OF THIS DRAWING FOR ANY OTHER PROJECT OR SITE WITHOUT THE WRITTEN PERMISSION OF HARRISON FRENCH & ASSOCIATES, PLLC IS STRICTLY PROHIBITED AND WILL BE CONSIDERED A VIOLATION OF THE LAW.

200 S KINGS HWY
 FORT PIERCE, FL 34945
USED OIL AST
 PROJECT NUMBER: 03-19-0467

Loves
 Travel Stop &
 Country Stores

RYAN S. RAY
 LICENSE
 No. 64568
 STATE OF
 FLORIDA
 PROFESSIONAL ENGINEER
 14 2019
 Ryan S. Ray, P.E.
 License #64568
 Harrison French &
 Associates, LTD
 COA #29421

ISSUE BLOCK

STORE NO. 467
 DOCUMENT DATE: 05/14/19
 CHECKED BY: BKH
 DRAWN BY: WVB
 PROTO CYCLE:

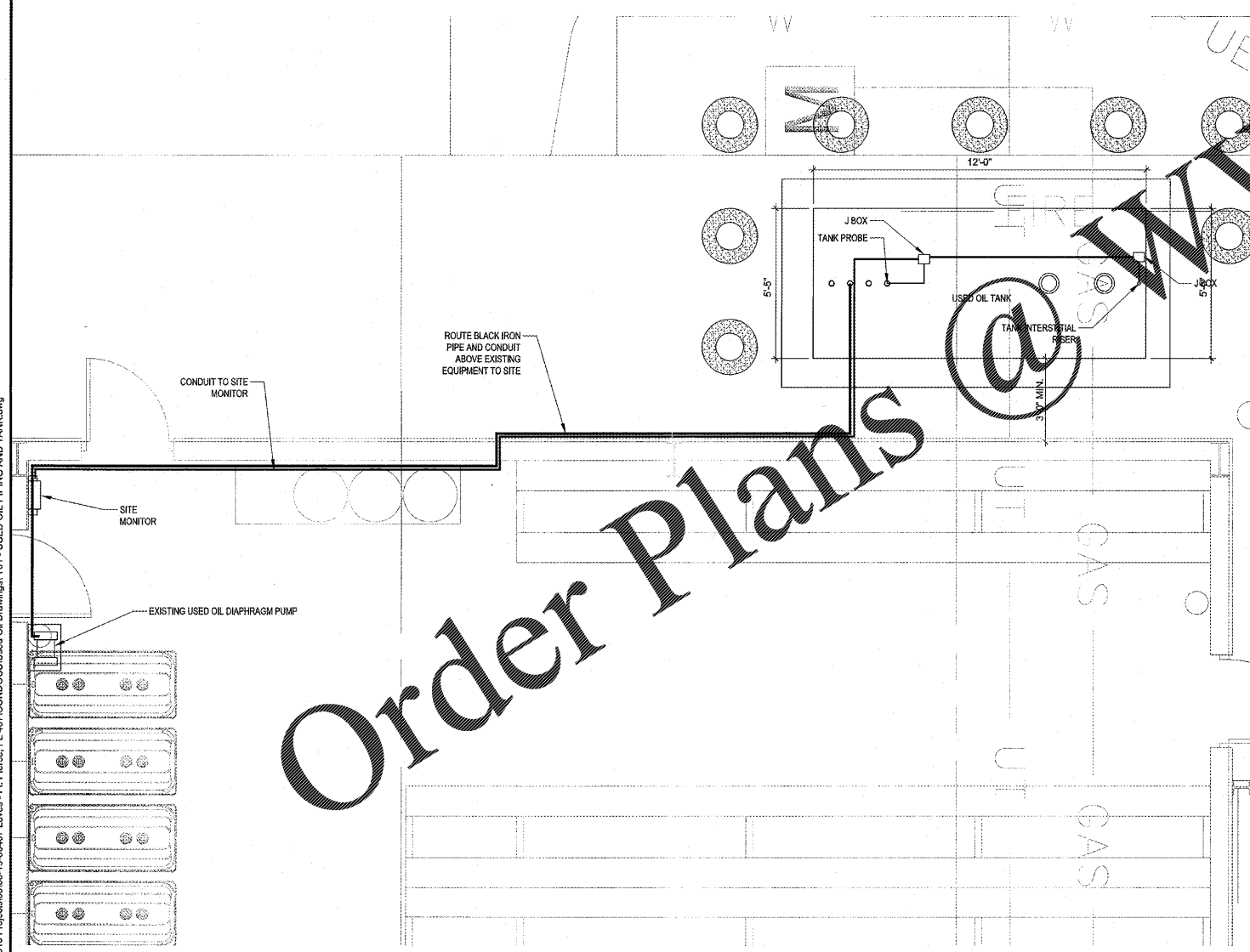
USED OIL PIPING
 AND
 ABOVEGROUND
 STORAGE TANK
 LAYOUT

SHEET: T-1

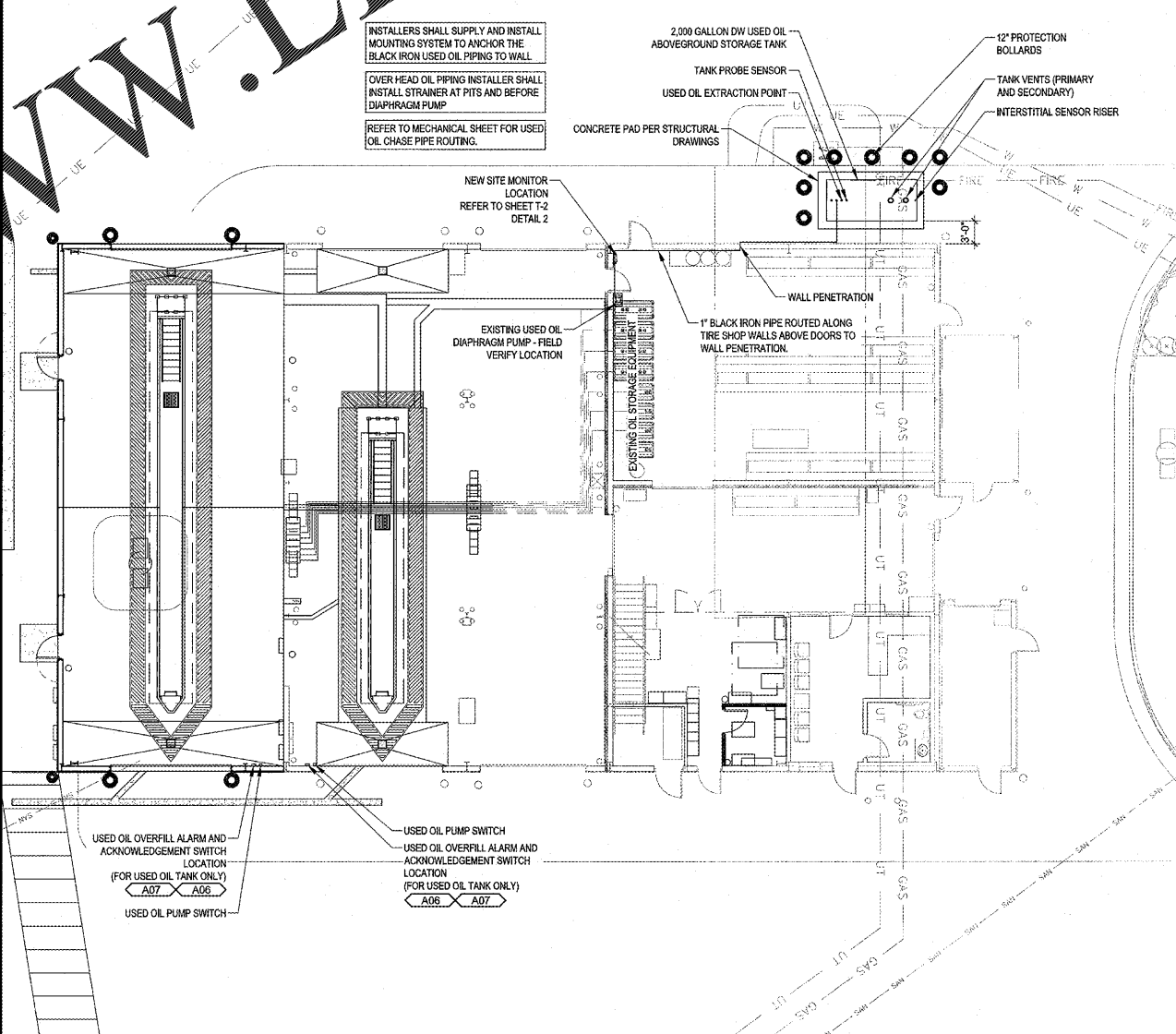
- USED OIL AST SCOPE OF WORK NOTES:**
1. INSTALLATION OF 2,000 GALLON DOUBLE WALLED ABOVEGROUND STORAGE TANK FOR USED OIL STORAGE.
 2. CONCRETE PAD FOR 2,000 GALLON AST.
 3. INSTALLATION OF FRANKLIN FUELING TS-550 SITE MONITOR WITH NETWORK CONNECTION.
 4. EXISTING USED OIL SHALL BE DRAINED AND NEW OIL SHALL BE ADDED TO TANK WITH NEW PNEUMATIC PUMP, TANK PROBE, AND INTERSTITIAL SENSOR TIES INTO SITE MONITOR.
 5. EXISTING OIL AST(S) SHALL HAVE TANK PROBES AND INTERSTITIAL SENSORS ADDED AND TIED INTO THE SITE MONITOR.
 6. INSTALLER SHALL ROUTE 1" BLACK IRON USED OIL PIPE FROM EXISTING DIAPHRAGM PUMP TO NEW 2,000 GALLON USED OIL STORAGE TANK.
 7. INSTALLER SHALL ROUTE 1" BLACK IRON USED OIL PIPE ALONG TIRE SHOP WALL ABOVE ALL MAN DOORS.
 8. USED OIL FLEX HOSE FROM NEW PIT SHALL MANFOLD TO EXISTING LINE AT DIAPHRAGM PUMP AND STRAINER.
 9. USED OIL STRAINER SHALL BE INSTALL AT BOTH PIT(S).
 10. OVERFILL ALARM AND ACKNOWLEDGEMENT SWITCH SHALL BE LOCATION BETWEEN BAY DOORS AT WALL.
 11. INSTALL USED OIL SOLENOID SWITCH BETWEEN BAY DOORS TO CONTROL DIAPHRAGM PUMP IN TIRE STORAGE AREA.

USED OIL ABOVEGROUND STORAGE TANK EQUIPMENT

ITEM #	DESCRIPTION	QTY.	PART #	MANUFACTURER
A01	2,000 GALLON DW AST	1	---	IOME
A02	SITE MONITOR	1	TS-550	FRANKLIN FUELING
A03	TANK PROBE	FIELD VERIFY	TSP-HLS	FRANKLIN FUELING
A04	INTERSTITIAL SENSOR	FIELD VERIFY	TSP-HFS	FRANKLIN FUELING
A05	SENSOR RISER CAP	FIELD VERIFY	TSP-K12	FRANKLIN FUELING
A06	OVERFILL ALARM	3	TS-RA1	FRANKLIN FUELING
A07	REMOTE FILL ACKNOWLEDGE SW	3	TS-RK	FRANKLIN FUELING
A08	PNEUMATIC OIL PUMP	1	---	(MATCH EXISTING)



2 USED OIL TANK SENSOR CONDUIT DETAIL
 SCALE: 3/8" = 1'-0"



1 TIRE SHOP OIL STORAGE LAYOUT
 SCALE: 3/32" = 1'-0"

May14,2019,12:02pm - User: wvlon.barnes
 \\hfa-fie01\2019 Projects\03-19-0467 Loves - Ft. Pierce, FL 467\CONDOCS\Used Oil Drawings\T01 - USED OIL PIPING AND TANK.dwg

Order Plans @ WWW.LDILine.com

WWW.LDILine.com