

- SHEET NOTES:**
- DEVON EZ-GUIDE SAFETY COVER, PROVIDED BY OWNER & INSTALLED BY GC.
 - PAINT LUBE PIT WALLS & FLOOR WITH "SHERWIN WILLIAMS" ARMORSEAL 10GHS-667-2000 CLEAR BASE WITH GLOSS FINISH.
 - PIT SAFETY NETTING PROVIDED BY OWNER & INSTALLED BY GC AFTER OIL CADDY HAS BEEN INSTALLED.

HFA
HARRISON FRENCH & ASSOCIATES, LTD.
 1705 S. Walton Blvd., Suite 3
 Bentonville, Arkansas 72712
 t 479.273.7780
 f 888.520.9685
 www.hfa-ae.com

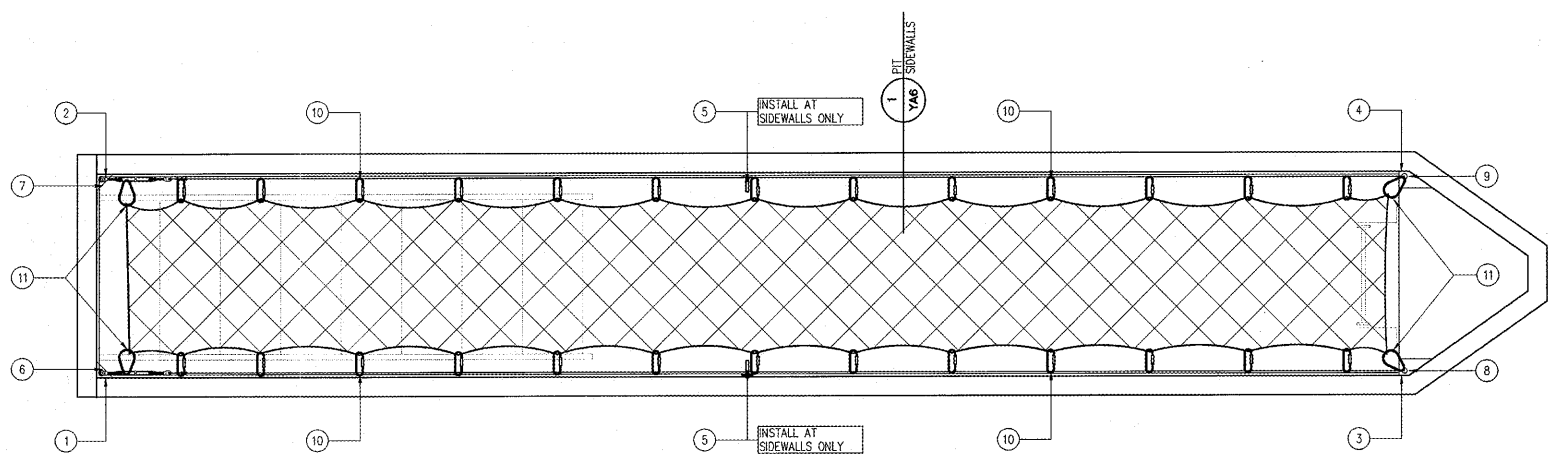
STIPULATION FOR REUSE:
 THIS DRAWING IS THE PROPERTY OF HARRISON FRENCH & ASSOCIATES, LTD. IT IS TO BE USED ONLY FOR THE PROJECT AND SITE SPECIFICALLY IDENTIFIED HEREON. ANY REUSE OF THIS DRAWING FOR ANY OTHER PROJECT WITHOUT THE WRITTEN PERMISSION OF HARRISON FRENCH & ASSOCIATES, LTD. IS STRICTLY PROHIBITED.

200 S KINGS HWY
 FORT PIERCE, FL 34945
 SPEEDCO REBRANDING &
 LIGHT MECHANICAL ADDITION
 PROJECT NUMBER: 03-19-0447

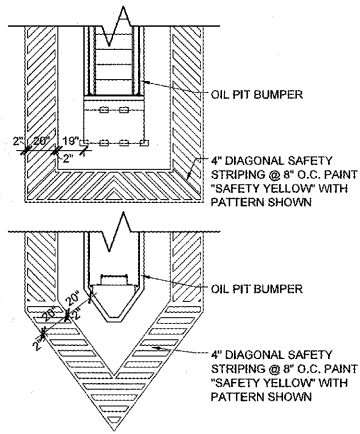
Loves
**Travel Stop &
 Country Stores**

STATE OF FLORIDA
 JORJE MARIE COOK, ARCHITECT
 License #ARB9512
 Harrison French &
 Associates, LTD
 C.O.A. #AA226001029

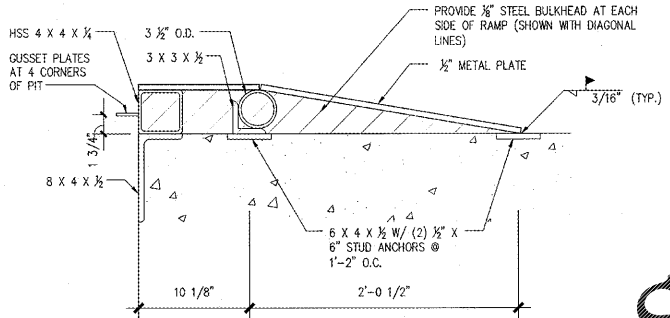
- GUSSET PLATE 1 BY G.C. REF: A-6/YA6
- GUSSET PLATE 2 BY G.C. REF: A-6/YA6
- GUSSET PLATE 3 BY G.C. REF: B-6/YA6
- GUSSET PLATE 4 BY G.C. REF: B-6/YA6
- WELD THE PAD EYE AT MIDDLE OF 73"-8" RUN (NOT NEEDED AT SHORTER 33"-10" LONG PIT) IN A VERTICAL POSITION ON SIDEWALL
- ATTACH ONE TURNBUCKLE VIA THE JAW END TO GUSSET PLATE #1.
- ATTACH ONE TURNBUCKLE VIA THE JAW END TO GUSSET PLATE #2.
- ATTACH CABLE TO GUSSET PLATE #3. EXTEND THE CABLE TO THE EYE END OF THE TURNBUCKLE AT GUSSET PLATE #1. USE (3) WIRE ROPE CLIPS ON CABLE.
- ATTACH CABLE TO GUSSET PLATE #4. EXTEND THE CABLE TO THE EYE END OF THE TURNBUCKLE AT GUSSET PLATE #2. USE (3) WIRE ROPE CLIPS ON CABLE.
- ATTACH QUICKLINKS TO EACH SIDE OF NET 15" APART.
- ATTACH SPRING SNAP LINKS TO THE NET ON BOTH ENTRANCE AND EXIT SIDES OF NET.



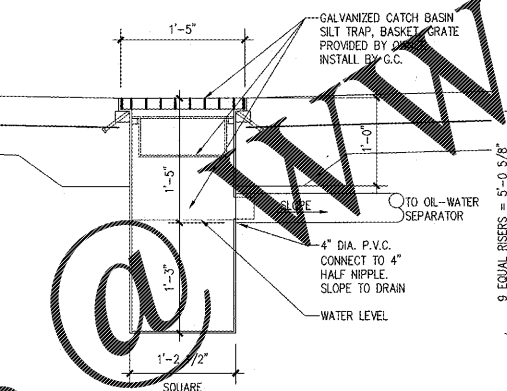
12 PIT SAFETY NETTING DETAIL
 SCALE: 1" = 1'-0"



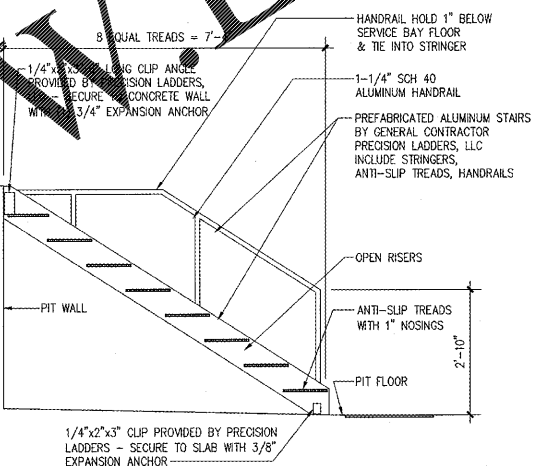
11 ENLARGED STRIPING DETAIL
 SCALE: 3/16" = 1'-0"



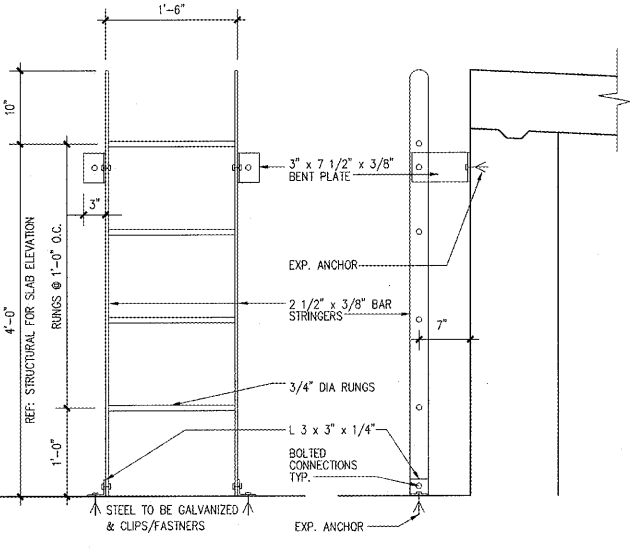
10 METAL PLATE DETAIL
 SCALE: 1-1/2" = 1'-0"



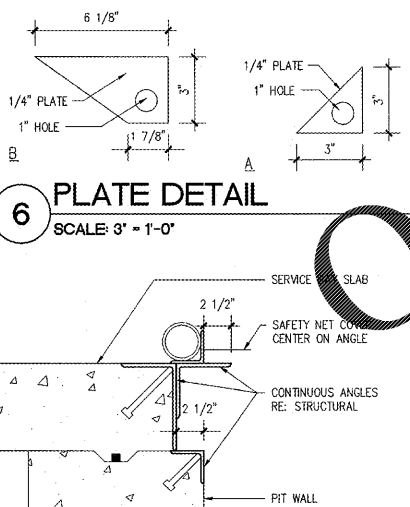
9 CATCH BASIN
 SCALE: 1" = 1'-0"



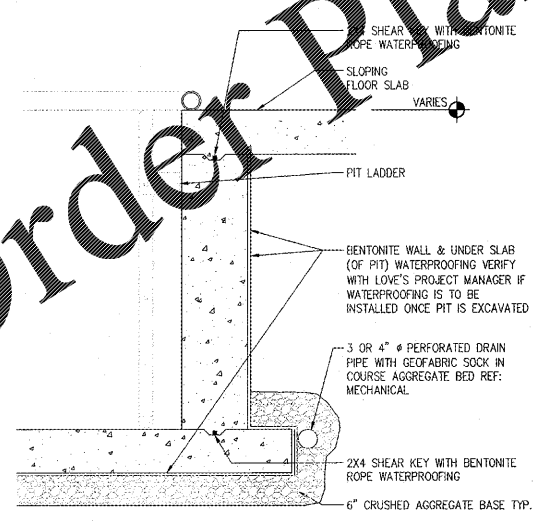
8 STAIR SECTION
 SCALE: 1/2" = 1'-0"



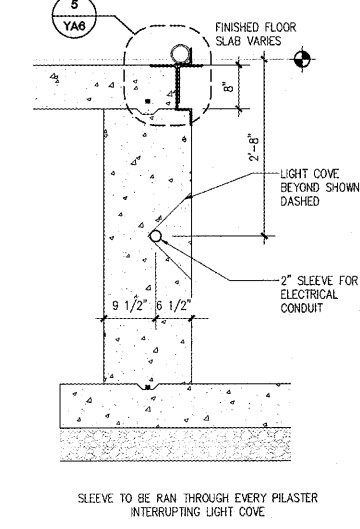
7 LADDER SECTION
 SCALE: 1" = 1'-0"



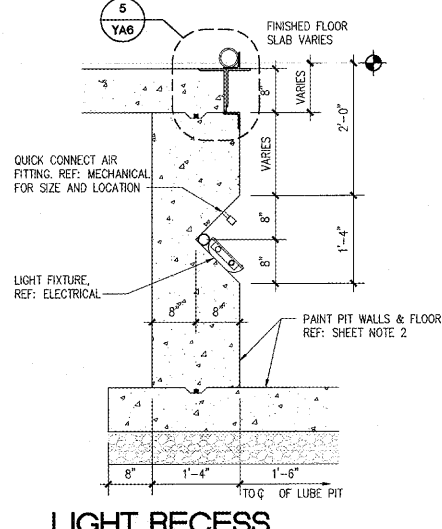
6 PLATE DETAIL
 SCALE: 3" = 1'-0"



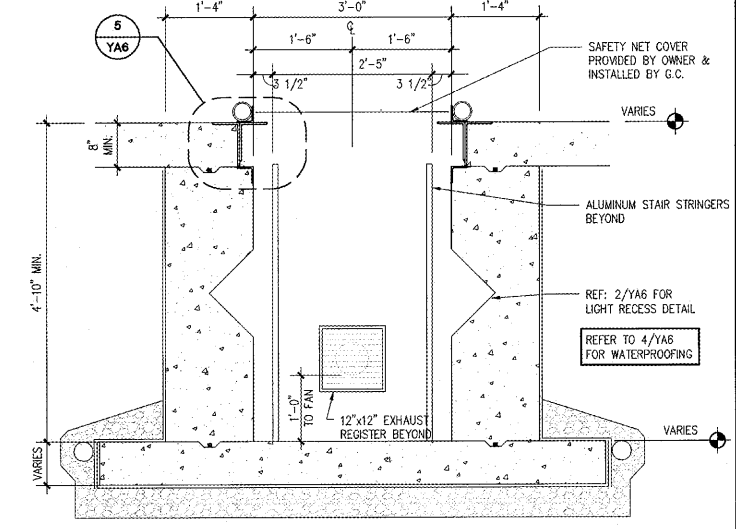
4 PIT WATERPROOFING
 SCALE: 3/4" = 1'-0"



3 WALL SECTION
 SCALE: 3/4" = 1'-0"



2 LIGHT RECESS (WALL) SECTION
 SCALE: 3/4" = 1'-0"



1 LUBE PIT SECTION
 SCALE: 3/4" = 1'-0"

Order Plans

May 23, 2019 10:23am - User: jason@hfr.com
 N:\2019\19-0447 Loves - FT Pierce, FL\67\CONDO\Architectural\186 YA6 LUBE PIT SECTIONS AND DETAILS.dwg

ISSUE BLOCK

STORE NO.	487
DOCUMENT DATE:	05/14/19
CHECKED BY:	ELR
DRAWN BY:	JTH
PROTO CYCLE:	

LUBE PIT SECTIONS AND DETAILS

SHEET: **YA6**