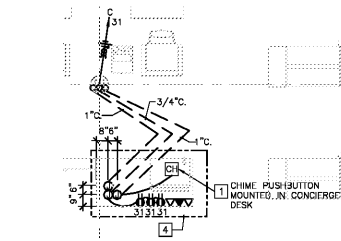
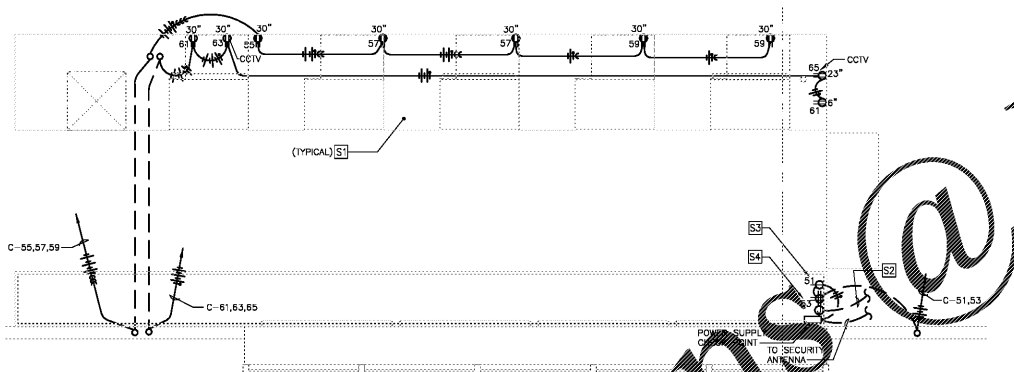


PROVIDE HANDLE TIES AS REQUIRED FOR MULTI-WIRE BRANCH CIRCUITS WITH COMMON NEUTRALS PER NEC 210.4.



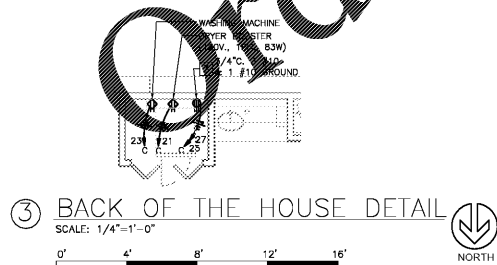
① CONCIERGE DESK - POWER & SPECIAL SYSTEMS
SCALE: 1/4"=1'-0"



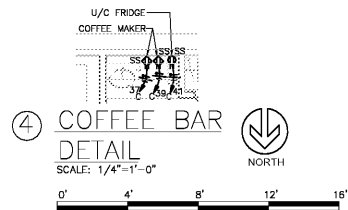
② SERVICE COUNTER PART PLAN - POWER & SPECIAL SYSTEMS
SCALE: 1/2"=1'-0"

SERVICE DESK NOTES:

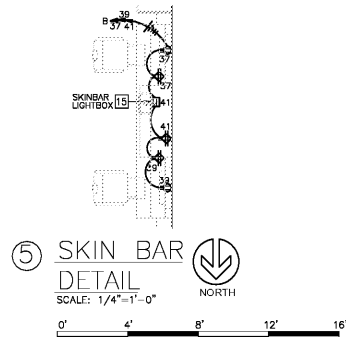
- S1 CONDUIT SHALL BE ROUTED IN BASE OF MILLWORK. ELECTRICAL CONTRACTOR SHALL FURNISH, INSTALL, AND WIRE ALL DEVICES AND BOXES WITHIN RECEPTION/SALON COUNTER. COORDINATE EXACT LOCATION AND ROUTING IN FIELD WITH MILLWORK.
- S2 SEE SECURITY SYSTEM WIRING DIAGRAM, SHEET E3-2, FOR CONTINUATION OF SECURITY SYSTEM CONNECTIONS.
- S3 SINGLE RECEPTACLE MOUNTED 12" ABOVE BASE SHELF OF CABINET IN BACKWRAP AREA FOR CHECK-POINT SECURITY SYSTEM "POWER PACK". LABEL RECEPTACLE "SECURITY SYSTEM BATTERY CONTROL WIRING IN CONDUIT". SEE SHEET E3-1 FOR ADDITIONAL INFORMATION.
- S4 RECEPTACLE MOUNTED 12" ABOVE BASE SHELF OF CABINET IN BACKWRAP AREA FOR HAND-HELD SCANNER CHARGER. LABEL DUPLEX RECEPTACLE "SCANNER CHARGER."



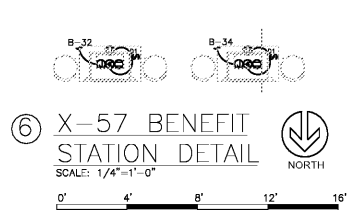
③ BACK OF THE HOUSE DETAIL
SCALE: 1/4"=1'-0"



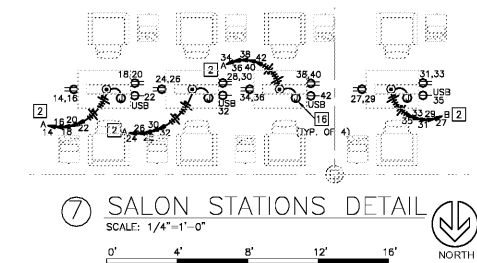
④ COFFEE BAR DETAIL
SCALE: 1/4"=1'-0"



⑤ SKIN BAR DETAIL
SCALE: 1/4"=1'-0"



⑥ X-57 BENEFIT STATION DETAIL
SCALE: 1/4"=1'-0"



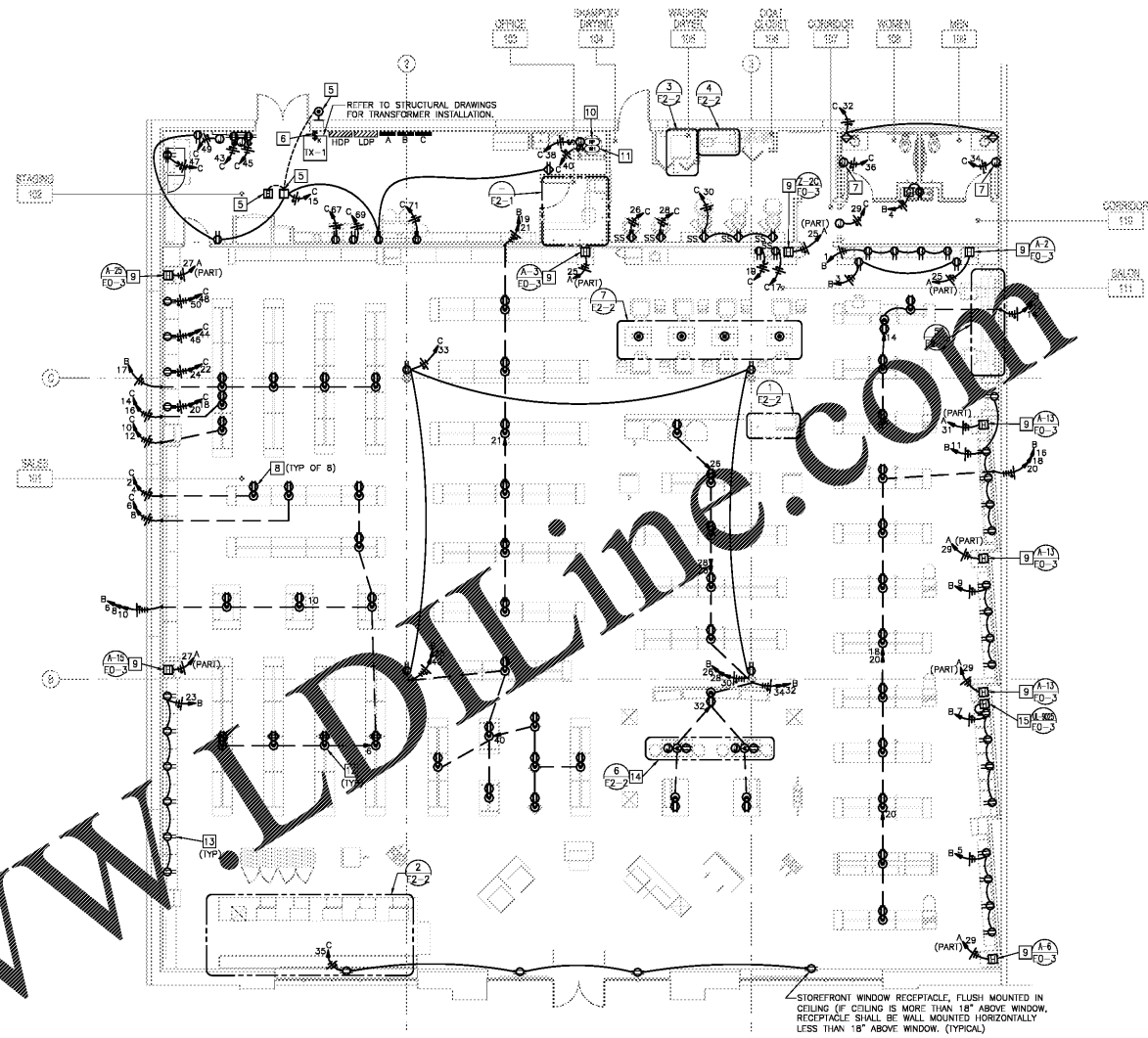
⑦ SALON STATIONS DETAIL
SCALE: 1/4"=1'-0"

GENERAL POWER NOTES:

- A. EXISTING CONDITIONS SHOWN ARE BASED ON AS-BUILT DRAWINGS PROVIDED BY THE OWNER. CONTRACTOR SHALL ADJUST FOR ACTUAL FIELD CONDITIONS AT NO ADDITIONAL EXPENSE TO THE OWNER.
- B. REFER TO ARCHITECTURAL DRAWINGS FOR EXACT LOCATION OF ALL ELECTRICAL DEVICES. CONTRACTOR SHALL COORDINATE ALL DEVICE LOCATIONS AND MOUNTING HEIGHTS WITH ARCHITECTURAL ELEVATIONS PRIOR TO ANY INSTALLATION.
- C. ELECTRICAL CONTRACTOR SHALL INSTALL RECEPTACLES AND BOXES WITHIN CONCERGE MILLWORK COUNTER. COORDINATE EXACT LOCATION AND CONDUIT ROUTING WITH MILLWORK CONTRACTOR.
- D. ALL CONDUIT ROUTED IN FLOOR SLAB SHALL BE MINIMUM 3/4" SCHEDULE PVC CONDUIT WITH GROUND WIRE WHERE ALLOWED BY LOCAL CODE AND UNLESS SPECIFICALLY NOTED OTHERWISE.
- E. ALL CONDUIT AND JUNCTION BOXES SHALL BE SUPPORTED INDEPENDENTLY FROM ACoustICAL CEILING.
- F. CONTRACTOR SHALL LAYOUT BRANCH CIRCUIT WIRING AND ARRANGEMENT OF HOLEPINS FOR MAXIMUM EFFICIENCY. INCREASE WIRE SIZE IF VOLTAGE DROP EXCEEDS 2% OR 100 FEET IN LENGTH.
- G. SEE DETAIL ON SHEET E3-3 FOR ADDITIONAL REQUIREMENTS FOR HVAC UNIT WIRING.
- H. MAINTAIN CONTINUITY OF CIRCUITS SERVING FIXTURES, DEVICES, OR EQUIPMENT NOT BEING REMOVED.
- I. SEE ARCHITECTURAL DRAWINGS FOR TRENCHING DETAIL.
- J. BRANCH CIRCUIT WIRING IS SHOWN AS A GUIDE ONLY. EXACT QUANTITIES OF CONDUITS AND CONDUCTORS ARE NOT INDICATED. CONTRACTOR SHALL PROVIDE BRANCH CIRCUIT WIRING AS REQUIRED FOR A COMPLETE AND OPERABLE SYSTEM.
- K. ALL RECEPTACLES TO BE CONTROLLED BY EMS SYSTEM SHALL BE PROVIDED WITH ENGRAVED NEC CONTROLLED RECEPTACLE MARKING SYMBOL.

PLAN NOTES:

- 1 CHIME PUSHBUTTON, PROVIDE 1900 BOX WITH SINGLE GANG BOX. REFER TO SHEET E3-1 FOR ADDITIONAL INFORMATION. REFER TO DETAIL 3/7-1.1C FOR EXACT CHIME LOCATION.
- 2 CONTRACTOR SHALL ROUTE FEEDERS FROM SALON STATION THROUGH FLOOR OUTLET OVER TO NEAREST COLUMN/WALL.
- 3 NEMA 14-30R RECEPTACLE FOR ELECTRIC DRYER. VERIFY WITH EQUIPMENT SUPPLIER FOR EXACT ELECTRICAL REQUIREMENTS AND OUTLET TYPE. PRIOR TO ROUGH-IN.
- 4 REFER ARCHITECTURAL DETAIL # 3 ON SHEET F-1.1C FOR EXACT RECEPTACLE AND DATA LOCATIONS.
- 5 PROVIDE A GENERAL PURPOSE BELL, (EDWARDS #156G-4AM), PUSH BUTTON (TRINE ACCESS TECHNOLOGY #84M) AND CLASS 2 SIGNAL TRANSFORMER (EDWARDS #590). PROVIDE # 10 WIRING BETWEEN PUSH BUTTON AND TRANSFORMER.
- 6 DOUBLE GANG, 3" DEEP JUNCTION BOX FOR SECURITY SYSTEM KEY SWITCH. MOUNT ON RIGHT SIDE OF DOOR. IF ROOM IS NOT AVAILABLE THEN MOUNT ON THE LEFT SIDE OF THE DOOR.
- 7 PROVIDE FINAL CONNECTION TO HAND DRYER (120V, 1.500W). VERIFY ALL REQUIREMENTS WITH EQUIPMENT VENDOR PRIOR TO ROUGH-IN. PROVIDE LABEL WITH CIRCUIT NUMBER FOR HAND DRYERS. PROVIDE CIRCUIT BREAKER WITH PAD LOCK OUT CAPABILITIES.
- 8 WIRE EACH OUTLET TO A DEDICATED CIRCUIT. PROVIDE A HANDLE TIE FOR CIRCUITS TO THE SAME RECEPTACLE/YOKE.
- 9 HARDWARE BOX FOR ARCH LIGHTING, MOUNTED ON BACK PANEL OF MILLWORK BEHIND ARCH FACE PANEL. IN CONCEALED ACCESS LOCATION. REFER TO DETAILS ON ARCHITECTURAL SHEET A-8.1 AND SHEET E3-3 FOR EXACT LOCATIONS.
- 10 PROVIDE FINAL CONNECTION TO RECIRCULATION PUMP (120V, 1PH, 30W). VERIFY EXACT ELECTRICAL CONNECTION WITH PLUMBING CONTRACTOR. PROVIDE DIGITAL 1-CHANNEL 40A, 120V, 1PH, TIME-LOCK (DJK # E1019 OR APPROVED EQUAL) MOUNTED ADJACENT TO ELECTRICAL PANELS FOR CONTROL OF RECIRCULATION PUMP. COORDINATE SHUT OFF SCHEDULE WITH ULTA'S CONSTRUCTION MANAGER.
- 11 PROVIDE FINAL CONNECTION TO GAS WATER HEATER. VERIFY EXACT ELECTRICAL CONNECTION WITH PLUMBING CONTRACTOR PRIOR TO ROUGH-IN. (120V, 1PH.)
- 12 SEE DETAIL ON SHEET E3-1 FOR ADDITIONAL INFORMATION. TYPICAL FOR ALL FLOOR RECEPTACLES.
- 13 CONDUIT AND WIRING FOR ARCH RECEPTACLES SHALL BE ROUTED IN CHASE WITHIN BASE MILLWORK FIXTURE. CONDUIT SHALL ENTER AT BACK OF VERTICAL ARCH SECTION BEHIND VERTICAL PANEL (WITH LIGHT FIXTURES). CONDUIT TO BE INSTALLED PRIOR TO INSTALLATION OF ARCH. THERE SHALL BE NO EXPOSED CONDUIT.
- 14 VERIFY EXACT LOCATION OF DIMMER SWITCH WITH ARCHITECTURAL DETAIL 3/7.1.1C. PRIOR TO INSTALLATION, LIGHT FIXTURE AND DIMMER SWITCH SHALL BE PROVIDED BY VENDOR AND INSTALLED AND WIRING BY CONTRACTOR. ALL CONDUIT AND WIRING SHALL BE CONCEALED WITHIN MILLWORK.
- 15 HARDWARE BOX FOR LIGHT BOX, MOUNTED ON BACK PANEL OF MILLWORK BEHIND LIGHT BOX PANEL. IN CONCEALED ACCESSIBLE LOCATION. REFER TO DETAILS ON ARCHITECTURAL SHEET A-8.1 AND SHEET E3-3 FOR EXACT LOCATIONS.
- 16 SALON COUNTER IS FURNISHED WITH PRE-WIRED OUTLETS AND LIGHTING. PROVIDE FINAL CONNECTION FROM FLOOR BOX TO VENDOR INSTALLED JUNCTION BOX WITHIN SALON COUNTER. EACH SALON COUNTER SHALL GET (5) CIRCUITS, (1) FOR USB SOCKET/MIRROR LIGHT AND (2) FOR EACH SALON STATION FOR A SPLIT YOKE RECEPTACLE. PROVIDE A HANDLE TIE FOR CIRCUITS TO THE SAME RECEPTACLE/YOKE.



FLOOR PLAN - POWER
SCALE: 1/8"=1'-0"

REVISION	DATE
LL & ULTA REVIEW	06/03/2019
BD ISSUE	06/03/2019
PERMIT ISSUE	06/04/2019

robert g. lyon + associates, inc.
1411 W. WASHINGTON ST. STE 111
5100 River Road, Ste 125
Schiller Park, IL 60176
TEL: 847.871.7422
F: 847.871.4200
www.rgla.com

THE ABOVE DRAWINGS AND SPECIFICATIONS REPRESENT THE DESIGN AND SHALL BE CONSIDERED COMPLETE AND CORRECT. CONTRACTOR SHALL VERIFY ALL DIMENSIONS AND REQUIREMENTS FOR ALL CONDITIONS. CONTRACTOR SHALL BE RESPONSIBLE FOR OBTAINING ALL NECESSARY PERMITS AND APPROVALS PRIOR TO CONSTRUCTION. CONTRACTOR SHALL MAINTAIN ALL RECORDS AND DRAWINGS FOR THE LIFE OF THE PROJECT. CONTRACTOR SHALL BE RESPONSIBLE FOR OBTAINING ALL NECESSARY PERMITS AND APPROVALS PRIOR TO CONSTRUCTION. CONTRACTOR SHALL MAINTAIN ALL RECORDS AND DRAWINGS FOR THE LIFE OF THE PROJECT.

ULTA BEAUTY
ULTA #613
SHOPPES OF MADISON
8201 HIGHWAY 72 WEST
SUITE C
MADISON, AL 35758

DESIGNED BY	CHECKED BY	JOB NUMBER	SHEET NAME
HEI	HEI	19047	E2-2

HENDERSON ENGINEERS
8345 LEVINE DRIVE, SUITE 300
DENVER, CO 80231
TEL 913.742.5000 FAX 913.742.5001
WWW.HENDERSONENGINEERS.COM
185001789
AL CORPORATION NUMBER: CA-2185-E
EXPIRES 01/31/2020

Order Plans @

WWW.WALDLINE.COM