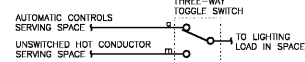


1 E1-1 EMERGENCY LIGHTING FIXTURE WIRING DIAGRAM  
NO SCALE



3 E1-1 MAINTENANCE OVERRIDE WIRING DIAGRAM  
NO SCALE

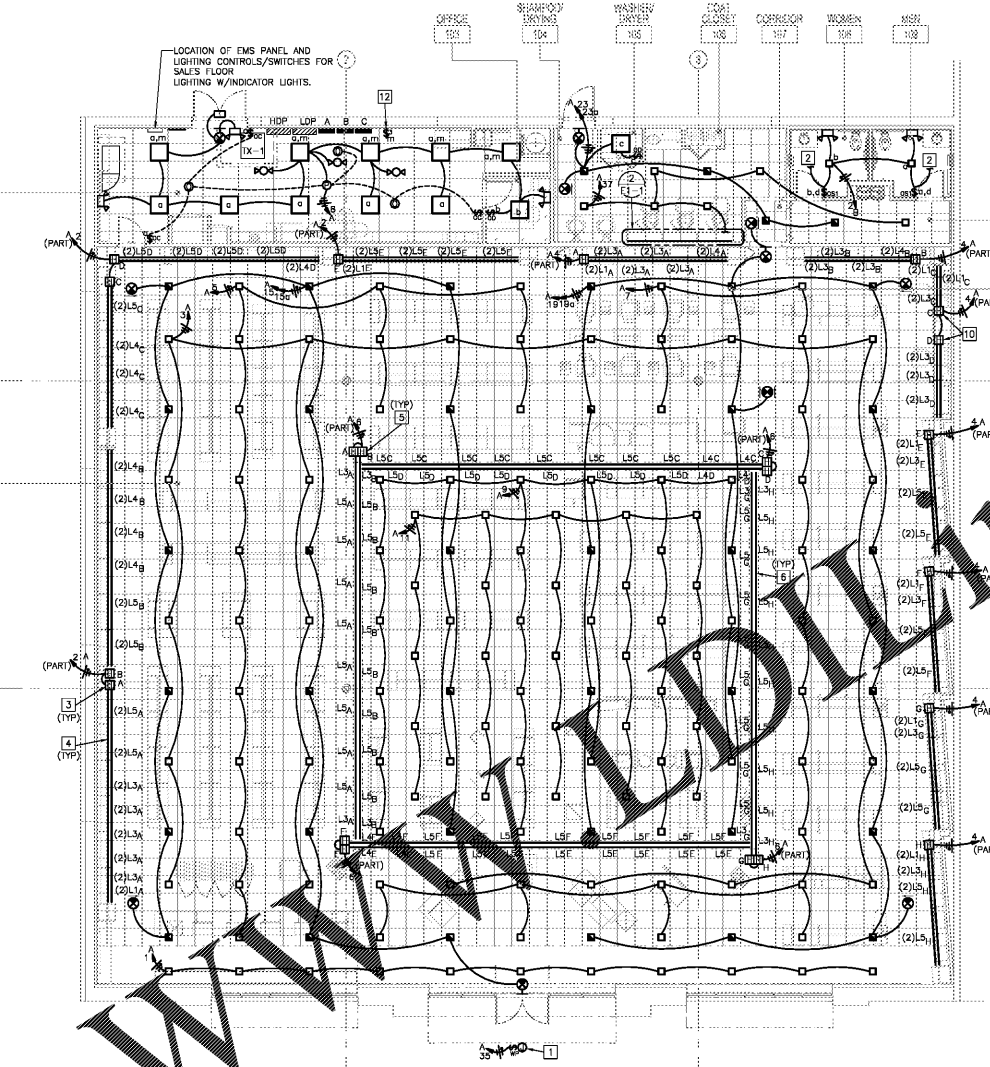
REAR EXTERIOR LIGHTING  
REAR EXTERIOR LIGHTING STRINGS ULTA SPACE AND WIRED TO ULTA PANEL SHALL BE CONTROLLED BY AN EXTERIOR PHOTOCELL.

OCCUPANCY SENSOR SCHEDULE			
QTY	DESCRIPTION	MANUFACTURER & MODEL NUMBER	REMARKS
0	360DEG MOTION SENSOR LOW VOLTAGE-PASSIVE INFRARED	SENSORSWTCH CM-10	
0	360DEG MOTION SENSOR LOW VOLTAGE-PASSIVE INFRARED WITH 0-10V DIMMING	SENSORSWTCH CM-10-D	
0	360DEG MOTION SENSOR LINE VOLTAGE-PASSIVE INFRARED	SENSORSWTCH CM-10	
0	MOTION SENSOR POWER PACK	SENSORSWTCH PP-20	
0	3-WAY WALL MOUNTED CEILING SENSOR INTERFACE SWITCH	SPD0M-SA-3X	
0	WALL MOUNTED CEILING SENSOR INTERFACE SWITCH	SPD0M-SA	
0	WALL MOUNTED CEILING SENSOR INTERFACE SWITCH WITH 0-10V DIMMING	SPD0M-SA-D	
0	3-WAY WALL MOUNTED CEILING SENSOR INTERFACE SWITCH WITH 0-10V DIMMING	SPD0M-SA-3X-D	
0	WALL MOUNTED CEILING SENSOR INTERFACE SWITCH WITH 0-10V DIMMING	SPD0M-SA-D	
0	WALL MOUNTED MOTION SENSOR	SENSORSWTCH WSD	
0	2 CIRCUIT WALL MOUNTED MOTION SENSOR	SENSORSWTCH WSD-2P	

OCCUPANCY SENSOR NOTES:

- OS1. FURNISH AND INSTALL A POWER PACK FOR EACH CIRCUIT SWITCH LEG THAT IS CONTROLLED BY AN OCCUPANCY SENSOR.
- OS2. PLAN DRAWING LOCATIONS OF OCCUPANCY SENSOR ARE DIAGRAMATIC ONLY. CONTRACTOR SHALL LOCATE OCCUPANCY SENSOR PER MANUFACTURER'S RECOMMENDATIONS.
- OS3. CONTRACTOR SHALL COORDINATE OCCUPANCY SENSOR SETTINGS WITH OWNER AND FIELD ADJUST AS REQUIRED.
- OS4. RESTROOM WALL MOUNTED OCCUPANCY SENSORS SHALL TURN ON WHEN OCCUPANCY IS DETECTED AND TURN OFF AFTER NO OCCUPANCY HAS BEEN DETECTED FOR 30 MINUTES. IF SWITCH IS MANUALLY TURNED OFF AND NO OCCUPANCY HAS BEEN DETECTED AFTER BRIEF GRACE PERIOD, SENSOR SHALL DEFAULT TO OCCUPANCY DETECTION ON.
- OS5. OCCUPANCY SENSORS SHALL BE MANUAL ON AND TURN OFF AFTER NO OCCUPANCY HAS BEEN DETECTED FOR 30 MINUTES.

PROVIDE HANG TIES AS REQUIRED FOR MULTIWIRE BRANCH CIRCUITS WITH COMMON NEUTRALS PER NEC 210.4.



FLOOR PLAN - LIGHTING  
SCALE: 1/8"=1'-0"  
0' 8' 16' 24' 32'

LIGHTING ZONE SCHEDULE			
ZONE	CIRCUITS CONTROLLED	REMARKS	CONTROL
1	A-2,7	EMPLOYEE LIGHTING - AREA 1 (1/2 GENERAL)	ON/OFF WITH SECURITY CODE
2	A-1,2,3	EMPLOYEE LIGHTING - AREA 2 (1/2 GENERAL)	ON/OFF WITH SECURITY CODE
3	A-2,4,14,16,18,20,22,24,25,28,30,32,34,36,38,40,42	DISPLAY LIGHTING - VALANCE AND RECEPTACLES	ON/OFF WITH SECURITY CODE
	B-4,12,14,16,18,20,22,27,29,31,33,35,41		
4	A-1,3,25,27,29,31,37	CUSTOMER LIGHTING - AREA 1	ON/OFF DURING STORE HOURS IF SECURITY CODE IS ENABLED
	B-1,3,5,6,7,8,9,10,11,17,18,21		
5	A-8	CUSTOMER LIGHTING - AREA 2	ON/OFF DURING STORE HOURS IF SECURITY CODE IS ENABLED
6	A-6	DECORATIVE LIGHTING - COVE AND PENDANTS	ON/OFF DURING STORE HOURS IF SECURITY CODE IS ENABLED
7	A-15,19	ENTRY LIGHTING	ON/OFF DURING STORE HOURS IF SECURITY CODE IS ENABLED
8	A-20	EXTERIOR SIGNAGE	ON AT 4PM, OFF AT MIDNIGHT
9		SPARE	
10		SPARE	
11		SPARE	

THESE TIMES ARE FOR REFERENCE ONLY. COORDINATE EXACT DETAILS WITH OWNER PRIOR TO COMMISSIONING.

LIGHTING PLAN NOTES:

- PROVIDE FINAL CONNECTION TO SIGNAGE. COORDINATE LOCATION AND REQUIREMENTS WITH SIGN CONTRACTOR. PROVIDE LOCAL DISCONNECT SWITCH MOUNTED IN AN INCONSPICUOUS ACCESSIBLE LOCATION. EACH SIGN CIRCUIT SHALL HAVE SEPARATE NEUTRAL AND SEPARATE EQUIPMENT GROUND CONDUCTORS. SIGNAGE TO BE FURNISHED AND INSTALLED BY ULTA WITH FINAL CONNECTION BY ELECTRICAL CONTRACTOR. VERIFY NUMBER AND LOCATION OF SIGNS WITH OWNER'S REPRESENTATIVE PRIOR TO ROUGH-IN.
- CONNECT THE EXHAUST FAN SERVING THIS ROOM TO THE SWITCHED SIDE OF THE LOCAL LIGHTING CIRCUIT SERVING THIS ROOM. SEE SHEET ED-3 FOR CONTINUATION. SEE DETAIL ON SHEET ED-3 FOR ADDITIONAL INFORMATION.
- MOUNT HARDWARE BOX FOR VALANCE/ARCH VALANCE LIGHTING INSIDE ARCH ON BACK PANEL OF MILLWORK BEHIND FACE PANEL IN CONCEALED ACCESSIBLE LOCATION. REFER TO TYPICAL HARDWARE BOX LOCATION ON ARCHITECTURAL SHEET AS-1.
- PENETRATIONS FOR CONNECTING CABLES FROM THE HARDWARE BOX TO LIGHTING FIXTURE SHALL BE MADE IN-LINE WITH LIGHT FIXTURE TO CONCEALED CABLES. NO CONDUIT OR CONNECTION CABLES SHALL BE VISIBLE FROM THE SALES FLOOR.
- MOUNT HARDWARE BOX TO BOTTOM SIDE OF CHAIN HUNG PLYWOOD FOR CENTER BOX LIGHTING. REFER TO ARCHITECTURAL DETAIL. EACH ROW SHALL HAVE (1) HARDWARE BOX DIRECTLY CONNECTED TO THE END FIXTURE OF EACH ROW.
- CENTER BOX LED STRIPS SHALL BE MOUNTED TO THE SIDE OF CHAIN HUNG PLYWOOD. REFER TO ARCHITECTURAL DETAIL.
- LED DRIVER AND RECEPTACLE FOR LINE VOLT LIGHTING DRIVER SHALL BE MOUNTED IN CABINET AND RECEPTACLE TO BE MOUNTED ON BACK PANEL OF MILLWORK AT 62" A.F.F. REFER TO ARCHITECTURAL DRAWING FOR EXACT LOCATION. THE SWITCH CONTROLLING THE DRIVER IS HARDWIRED TO THE DRIVER FOR 0/10V DIMMING AND THE SWITCH CONTROLLING THE LIGHTS IS PLUG INTO THE DRIVER WITH FACTORY COVER.
- NOT USED
- NOT USED
- MOUNT HARDWARE BOX FOR VALANCE LIGHTING ON THE INTERIOR SIDE OF THE VALANCE AND CONCEAL IN A LOCATION THAT IS NOT VISIBLE FROM THE SALES FLOOR.
- "X" OR "TX" LETTERING DENOTES SEPARATE PORT OF THE HARD WIRE BOX WHICH IS TO BE CONNECTED. REFER TO LIGHTING FIXTURE NOTES FOR ADDITIONAL INFORMATION.
- ELECTRICAL MAINTENANCE OVERRIDE SWITCH PER NEC 110.25D. UNDER NORMAL OPERATION, SWITCH SHALL BE SET AS TO ALLOW AUTOMATIC LIGHTING CONTROLS TO CONTROL LIGHTING WITHIN SPACE DURING ELECTRICAL MAINTENANCE. SWITCH SHALL BE SET TO BY-PASS AUTOMATIC CONTROLS. PROVIDE LABELING INDICATING "ELECTRICAL MAINTENANCE OVERRIDE SWITCH" AND SWITCH POSITIONS "NORMAL OPERATION" AND "MAINTENANCE OVERRIDE". SWITCH POSITION SHALL BE UP FOR NORMAL OPERATION. REFER TO DETAIL 3/E1-1.

GENERAL LIGHTING NOTES:

- EXISTING CONDITIONS SHOWN ARE BASED ON AS-BUILT DRAWINGS PROVIDED BY THE OWNER. CONTRACTOR SHALL ADJUST FOR ACTUAL FIELD CONDITIONS AT NO ADDITIONAL EXPENSE TO THE OWNER.
- ALL CONDUIT AND JUNCTION BOXES SHALL BE SUPPORTED INDEPENDENTLY FROM ACoustICAL CEILING.
- CONTRACTOR SHALL LAYOUT BRANCH CIRCUIT WIRING AND ARRANGEMENT OF HOME RUNS FOR MAXIMUM EFFICIENCY. INCREASE WIRE SIZE IF VOLTAGE DROP EXCEEDS 2% OR 100 FEET IN LENGTH.
- REFER TO ARCHITECTURAL REFLECTED CEILING PLAN FOR EXACT LOCATION OF ALL LIGHTING FIXTURES.
- ALL LIGHT FIXTURES SHOWN (■) SHALL BE WIRED TO EMERGENCY LIGHTING CIRCUIT UNLESS NOTED OTHERWISE.
- ALL LIGHT FIXTURES SHOWN (□) SHALL BE TYPE "L" UNLESS NOTED OTHERWISE.
- ALL LIGHT FIXTURES SHOWN (□) SHALL BE TYPE "U" UNLESS NOTED OTHERWISE.
- ALL LIGHT FIXTURES SHOWN (■) SHALL BE TYPE "UL" AND WIRED TO EMERGENCY LIGHTING CIRCUIT UNLESS NOTED OTHERWISE. REFER TO DETAIL 1/E1-1.
- ALL LIGHT FIXTURES SHOWN (⊕) SHALL BE TYPE "TX" UNLESS NOTED OTHERWISE.
- ALL LIGHT FIXTURES SHOWN (⊕) SHALL BE TYPE "TX3" UNLESS NOTED OTHERWISE.
- ALL LIGHT FIXTURES SHOWN (⊕) SHALL BE TYPE "TX4" UNLESS NOTED OTHERWISE.
- MAINTAIN CONTINUITY OF CIRCUITS SERVING FIXTURES, DEVICES OR EQUIPMENT NOT BEING REMOVED.
- ALL FIXTURES INSTALLED IN SUSPENDED CEILINGS SHALL BE DIRECTLY SUPPORTED FROM THE BUILDING STRUCTURE PER BUILDING CODES AND LOCAL AMENDMENTS. IF STEEL RODS ARE UTILIZED FOR THIS PURPOSE, NO LESS THAN 2 SEPARATE RODS SHALL BE USED. THESE RODS MUST EXTEND FROM OPPOSITE CORNERS OF THE FIXTURE WITH EACH ROD INDEPENDENTLY SUPPORTED FROM STRUCTURE. ATTACH RODS WITHIN 3 INCHES OF EACH CORNER OF EACH FIXTURE. ALL LIGHTING FIXTURES SHALL BE ATTACHED TO CEILING GRID. VERIFY ALL REQUIREMENTS WITH BUILDING CODES AND LOCAL AMENDMENTS.
- BRANCH CIRCUIT WIRING IS SHOWN AS A GUIDE ONLY. EXACT QUANTITIES OF CONDUITS AND CONDUCTORS ARE NOT INDICATED. CONTRACTOR SHALL PROVIDE BRANCH CIRCUIT WIRING AS REQUIRED FOR A COMPLETE AND OPERABLE SYSTEM.
- SIGNAGE, INTERIOR AND EXTERIOR LIGHTING SHALL BE CONTROLLED BY THE EMS SYSTEM VIA THE LIGHTING CONTROL PANELS. REFER TO SHEET ED-1 FOR ADDITIONAL INFORMATION. LOCAL LIGHTING OVERRIDES WILL BE AT LIGHTING CONTROL PANELS AND SECURITY STATIONS THROUGHOUT THE BUILDING. COORDINATE EXACT LOCATIONS AND REQUIREMENTS WITH ENERGY MANAGEMENT COMPANY AND SECURITY VENDOR.
- REFERENCE DETAIL ON SHEET # ED-3 FOR ARCH LIGHTING DETAILS.
- CONTRACTOR SHALL FURNISH AS-BUILT DRAWINGS FOR ELECTRICAL POWER SYSTEMS WITHIN 30 DAYS OF SYSTEM ACCEPTANCE.
- CONTRACTOR SHALL FURNISH OPERATION AND MAINTENANCE INSTRUCTIONS FOR SYSTEM AND EQUIPMENT TO THE BUILDING OWNER OR DESIGNATED REPRESENTATIVE.
- CONTRACTOR SHALL PROVIDE WRITTEN VERIFICATION WITH COPY TO ENGINEER THAT LIGHTING SYSTEMS HAVE BEEN TESTED TO ENSURE PROPER CALIBRATION, ADJUSTMENT, PROGRAMMING AND OPERATION.
- SWITCHES SHALL BE GRAY DEVICES WITH STAINLESS STEEL COVER PLATE WHEN LOCATED OVER WC-5, STAINLESS STEEL OR OTHER GRAY WALL FINISHES. SEE ARCHITECTURAL INTERIOR ELEVATIONS FOR ADDITIONAL INFORMATION.

Order Plans @

2 E1-1 SHAMPOO/DRYING CABINET  
SCALE: 1/8"=1'-0"

**RGLA**  
rgla solutions, inc.  
5100 River Road, Ste 125  
Schiller Park, IL 60176  
F: 847.871.1422  
www.rgla.com

REVISION	DATE
LL & I.T.A REVIEW	06/03/19
B'D ISSUE	06/03/19
PERMITS ISSUE	06/04/19

**robert g. lyon + associates, inc.**  
1410 N. WILSON AVE. SUITE 110  
5100 River Road, Ste 125  
Schiller Park, IL 60176  
F: 847.871.1422  
www.rgl.com

THE ARCHITECTURAL DRAWINGS AND SPECIFICATIONS...  
CONTRACTOR SHALL VERIFY THE EXISTING CONDITIONS...  
CONTRACTOR SHALL VERIFY THE EXISTING CONDITIONS...  
CONTRACTOR SHALL VERIFY THE EXISTING CONDITIONS...

**ULTA BEAUTY**  
ULTA #613  
SHOPPES OF MADISON  
8201 HIGHWAY 72 WEST  
SUITE C  
MADISON, AL 35758

FLOOR PLAN LIGHTING

DESIGNED BY	HEB
CHECKED BY	HEB
JOB NUMBER	19047
SHEET NAME	E1-1

**HENDERSON ENGINEERS**  
8345 LENOVA DRIVE, SUITE 300  
EVANSTON, IL 60201  
TEL 913.742.5000 FAX 913.742.5001  
WWW.HENDERSONENGINEERS.COM  
185000780  
AL CORPORATION NUMBER: CA-2185-E  
EXPIRES 01/31/20