

LIGHTING FIXTURE SCHEDULE							
TYPE	SYMBOL	DESCRIPTION	MANUFACTURER/ CATALOG NUMBER	LAMP TYPE	VOLTAGE	WATTS	NOTES
L1	[Symbol]	1" SURFACE MOUNTED LED STRIP W/ INTEGRAL DRIVER (ACTUAL LENGTH 11')	ATTANLED # AT-11-005-50	500 LED 5,000K	120V	5W	1.9
L2	[Symbol]	2" SURFACE MOUNTED LED STRIP W/ INTEGRAL DRIVER (ACTUAL LENGTH 21 1/2')	ATTANLED # AT-21-005-50	800 LED 5,000K	120V	9W	1.9
L3	[Symbol]	3" SURFACE MOUNTED LED STRIP W/ INTEGRAL DRIVER (ACTUAL LENGTH 33')	ATTANLED # AT-33-012-50	1200 LED 5,000K	120V	12W	1.9
L4	[Symbol]	4" SURFACE MOUNTED LED STRIP W/ INTEGRAL DRIVER (ACTUAL LENGTH 45')	ATTANLED # AT-45-018-50	1500 LED 5,000K	120V	15W	1.9
L5	[Symbol]	5" SURFACE MOUNTED LED STRIP W/ INTEGRAL DRIVER (ACTUAL LENGTH 57')	ATTANLED # AT-56-018-50	1800 LED 5,000K	120V	18W	1.9
L	[Symbol]	2X2 LED PANEL LIGHT W/ 10V DIMMING DRIVER (L/D DENOTES WIRED FOR DIMMING)	ATTANLED # AT-PN-22-39-37-W	3600 LED 3,700K	120/277V	30W	1
U	[Symbol]	8" SQUARE LED DOWNLIGHT WITH WHITE REFLECTOR, 0-10V DIMMING DRIVER (L/D DENOTES WIRED FOR DIMMING)	ATTANLED # AT-SDL-8-38-40-WH-8	3850 LED 4,000K	120/277V	38W	1
UE	[Symbol]	8" SQUARE LED DOWNLIGHT WITH WHITE REFLECTOR, 0-10V DIMMING WITH EMERGENCY BATTERY BACKUP (UED DENOTES WIRED FOR DIMMING)	ATTANLED # AT-SDL-8-38-40-WH-EM-8	3850 LED 4,000K	120/277V	38W	1.5
UCL	[Symbol]	4" SURFACE MOUNTED LED STRIP W/ REMOTE DIMMING DRIVER (ACTUAL LENGTH 38')	ATTANLED # AT-LNR-100-3-40-80	300 LED 4,000K	120V	3W	1.10
UCL4	[Symbol]	4" SURFACE MOUNTED LED STRIP W/ REMOTE DIMMING DRIVER (ACTUAL LENGTH 44 1/8')	ATTANLED # AT-LNR-100-15-40-80	1500 LED 4,000K	120V	15W	1.10
EX	[Symbol]	EMERGENCY LED ENT LIGHT WITH BATTERY BACKUP	PATHWAY LIGHTING # PEKUR-DL	LED	120/277V	5W	1.8, 7" WALL MOUNTED, BOTTOM OF SIGN 4" ABOVE DOOR FRAME
EX3	[Symbol]	WALL MOUNTED 2-HEAD EMERGENCY LIGHT WITH BATTERY BACKUP	BEST LIGHTING # LEDR-1-4G	LED	120/277V	21W	1.8
EX4	[Symbol]	CEILING PENDANT MOUNTED 2-HEAD EMERGENCY LIGHT WITH BATTERY BACKUP	BEST LIGHTING # LEDR-1-4G	LED	120/277V	21W	1.6
EX5	[Symbol]	OUTDOOR SURFACE MOUNTED ARCHITECTURAL EMERGENCY LIGHT WITH BATTERY BACKUP	LITHONIA # AFN-8-EX3	LED	120/277V	3W	1.6

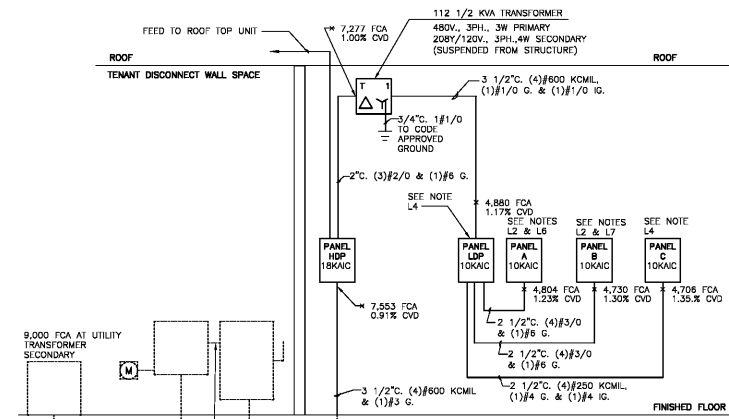
- LIGHTING SCHEDULE NOTES:**
- FURNISHED BY ULTA, INSTALLED AND WIRED BY ELECTRICAL CONTRACTOR.
 - REFER TO ARCHITECTURAL REFLECTED CEILING PLAN FOR EXACT LOCATION OF ALL LIGHT FIXTURES. COORDINATE EXACT MOUNTING REQUIREMENTS WITH ARCHITECTURAL DETAILS.
 - COORDINATE EXACT MOUNTING HARDWARE REQUIRED WITH OWNER VENDOR AND MANUFACTURER PRIOR TO BIDDING AND INCLUDE ALL COSTS IN BASE BID.
 - COORDINATE EXACT FINISH OF FIXTURE WITH INTERIOR DESIGNER.
 - EMERGENCY BATTERY BACK-UP WITH A MINIMUM OF 577 LUMEN OUTPUT FOR LED DOWNLIGHT FIXTURES FOR 90 MINUTES.
 - PROVIDE EXIT SIGNS AND EMERGENCY BATTERY PACKS PER LOCAL ORDINANCES.
 - PROVIDE DIRECTIONAL ARROWS AS SHOWN ON PLAN DRAWINGS AND AS REQUIRED BY LOCAL CODE AUTHORITIES. PROVIDE LETTER SIZE, COLOR AND TYPE AS REQUIRED BY LOCAL CODE AUTHORITIES.
 - LIGHT FIXTURES MUST BE POSITIVELY ATTACHED TO THE CEILING GRID WITH AN ATTACHMENT CAPABLE OF CARRYING 100% OF THE WEIGHT OF THE LIGHT FIXTURE IN ANY DIRECTION. THIS ATTACHMENT SHALL CONSIST OF FOUR EQUALLY SPACED ATTACHMENT POINTS USING SCREWS, NUTS, BOLTS OR OTHER APPROVED POSITIVE ATTACHMENT DEVICES. VERIFY ALL REQUIREMENTS WITH BUILDING CODES AND LOCAL AMENDMENTS.
 - FIXTURE SHALL BE CONTINUOUS MOUNTED, PROVIDE WITH HARDWARE BOX, CONNECTING CABLES, CONNECTORS AND MOUNTING HARDWARE AS REQUIRED FOR A COMPLETE INSTALLATION. A MINIMUM OF 1440W (720W PER POINT) SHALL BE CONNECTED TO A SINGLE HARDWARE BOX.
 - DRIVER SHALL BE MOUNTED INSIDE CABINET, AS DETAILED ON THE ARCHITECTURAL ELEVATIONS. PROVIDE WITH 99W REMOTE PLUG-IN DRIVER (# AT-24DC-96/LIS (□)). CONNECTING CABLES AND MOUNTING HARDWARE AS REQUIRED FOR A COMPLETE INSTALLATION. VERIFY EXACT SIZE REQUIRED FOR EACH LOCATION BEFORE ORDERING FIXTURES.

GENERAL NOTE

CONTRACTORS SHALL VISIT THE SITE AND FULLY ACCOUNT THEMSELVES WITH THE EXISTING CONDITIONS AND THE DIFFICULTIES INVOLVED IN THE WORK PRIOR TO SUBMISSION OF BID. INCLUDE ALL COSTS FOR A COMPLETE AND OPERATING SYSTEM IN THE BASE BID PROPOSAL. NOTIFY ARCHITECT/ENGINEER IMMEDIATELY OF ANY DISCREPANCIES.

SPECIAL NOTE

ELECTRICAL CONTRACTOR SHALL INCLUDE ALL COSTS FOR CUTTING AND PATCHING OF FLOOR SLAB TO INSTALL NEW CONDUITS. COORDINATE EXACT SCOPE OF WORK WITH GENERAL CONTRACTOR PRIOR TO BID.



ELECTRICAL ONE-LINE DIAGRAM

NOTES:

- ALL WORK SHALL COMPLY WITH THE LATEST EDITION OF THE NATIONAL ELECTRIC CODE AND ALL LOCAL CODES. COORDINATE EXACT CODE REQUIREMENTS AND LOCAL AMENDMENTS WITH LOCAL INSPECTOR PRIOR TO ANY INSTALLATION.
- CONTRACTOR SHALL CONTACT EMS VENDOR FOR EXACT SYSTEM REQUIREMENTS FOR EMS/LIGHTING CONTROL. PANELS AND PROVIDE ALL EQUIPMENT FOR A FULLY FUNCTIONAL SYSTEM. REFER TO SHEET CS CONTACT ULTA PROJECT MANAGERS FOR EMS VENDOR INFORMATION.
- PROVIDE GROUNDING IN ACCORDANCE WITH N.E.C. AND ALL LOCAL CODES.
- PANELS LDP AND C SHALL HAVE AN ISOLATED GROUND BUS AND BE SET TO GROUND CONDUCTOR TO POINT OF SERVICE.
- OBTAIN AVAILABLE FAULT CURRENT RATING FROM LOCAL UTILITY COMPANY AND PROVIDE PROPER PROTECTION FOR MAIN CIRCUIT BREAKERS AND ALL BRANCH DEVICES. FAULT CURRENT VALUES SHOWN ON THIS DRAWING WERE CALCULATED USING THE STANDARD VALUE OF 18,726 FCS EXISTING UTILITY TRANSFORMER IS 150 KV. BASE CASE WITH 1.70% TRANSFORMER AND FAULT CURRENT INFORMATION PROVIDED BY CHRIS WELLS (258) 515-2200 AND UTILITY UTILITIES COMPANY ON 07/20/19.
- PROVIDE A 3-SPACE D POWERLINK G3 PANELBOARD, NEMA 1 ENCLOSURE, INCLUDES ROUND BARS, 208Y/120V, MAIN LUGS ONLY, 200 AMPS, 48 CIRCUIT INTERIOR (42 AVAILABLE) LEFT AND RIGHT 21 CIRCUIT CONTROL BUSES, 3500 LEVEL MOUNTING BRACKET WITH LED TRAY (N335024), 18 PHYSICAL INFRA-RED SENSORS ASO/S/U, 1/2\"/>

PANEL & CIRCUIT BREAKER NOTES:

ALL ELECTRICAL PANELS, MAIN CIRCUIT BREAKERS AND SUBCIRCUIT CIRCUIT BREAKERS SHALL BE FURNISHED, INSTALLED, AND WIRED BY CONTRACTOR.

- CONTRACTOR SHALL PROVIDE, INSTALL AND WIRE ALL BRANCH CIRCUIT BREAKERS AND ECB-G3 CONTROLLABLE CIRCUIT BREAKERS.

ABBREVIATIONS

SYMBOL	DESCRIPTION
A	AMPERES
A.F.F.	ABOVE FINISHED FLOOR
B.P.S.	BOLTED PRESSURE SWITCH
C	CONDUIT
E	EXISTING TO REMAIN
EC	ELECTRICAL CONTRACTOR
EW	ELECTRIC WATER COOLER
GF	GROUND FAULT INTERRUPTER
GR	GROUND
M.L.O.	MAIN LUGS ONLY
ND	NEW DEVICE IN EXISTING LOCATION OF REMOVED DEVICE
N.I.C.	NOT IN CONTRACT
NEC	NATIONAL ELECTRICAL CODE
SS	STAINLESS STEEL
WP	WEATHERPROOF

DRAWING INDEX

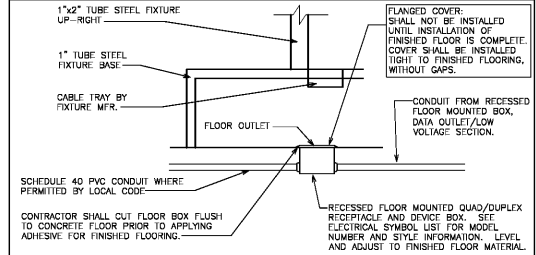
ED-1	ELECTRICAL DEMOLITION PLAN
ED-1	SYMBOL LIST, ONE LINE DIAGRAM & LIGHTING SCHEDULE
ED-2	PANELBOARD SCHEDULES
ED-3	ROOF PLAN - POWER, DETAILS & ARCH LIGHTING ELEVATIONS
E1-1	FLOOR PLAN - LIGHTING
E2-1	FLOOR PLAN - ELECTRICAL DIMENSIONS
E3-1	FLOOR PLAN - LOW VOLTAGE WIRING
E3-2	FLOOR PLAN - VOICE/DATA & SECURITY
E4-1	ELECTRICAL SPECIFICATIONS

SYMBOL LIST

- SINGLE POLE SWITCH (NO LIGHT DESIGNATION)
- SWITCH LETTER DESIGNATIONS AS FOLLOWS:
 - D1 = DIMMER SWITCH 0-10V (Lutron PFSV-10)
 - D2 = ELECTRONIC LOW VOLTAGE DIMMER SWITCH (Lutron PFSV-10)
 - D3 = DIMMER SWITCH 120V (Lutron PFI-800)
 - D4 = OCCUPANCY SENSOR/DIMMER (Lutron MS-210)
 - D5 = NOT OPERATED SWITCH
 - T = THERMAL OVERLOAD SWITCH
- MAXIMUM 40° AT UNLESS NOTED OTHERWISE. TYPICAL FOR SWITCHES.
- SIMPLE RECEPTACLE - NEMA 5-20R, UNO **
- DUPLEX RECEPTACLE - NEMA 5-20R, UNO **
- DOUBLE DUPLEX RECEPTACLE - NEMA 5-20R, UNO **
- SPECIAL RECEPTACLE - NEMA TYPE AS NOTED **
- OR GFCI TYPE RECEPTACLE **
- ISOLATED GROUND TYPE RECEPTACLE **
- RECEPTACLE INSTALLED IN CEILING **
- RECEPTACLE INSTALLED IN WALL **
- RECEPTACLE LETTER DESIGNATIONS AS FOLLOWS:
 - IG = ISOLATED GROUND
 - IGS = ISOLATED GROUND SWITCH
 - W = WATERSHED (STAIN)
 - W = WATERSHED (STAIN)
- CONTRACTOR SHALL PROVIDE, INSTALL AND WIRE ALL BRANCH CIRCUIT BREAKERS AND ECB-G3 CONTROLLABLE CIRCUIT BREAKERS.
- HUBBELL RECTANGULAR NONMETALLIC FLUSH FLOOR BOX WITH DUPLEX RECEPTACLE, FLANGE & ALUMINUM COVER - 2-GANG FLOOR BOX # FB2R, RECTANGULAR FLANGE # SA309AK, (2) ADAPTER COLLAR # FB2R, (2) COVER AND GASKET # SA309, (2) "CONTROLLED" RECEPTACLE # D30200Y (FLOOR OUTLETS WILL BE FURNISHED BY OWNER, CONTRACTOR SHALL INDICATE QUANTITY ON BID SHEET.)
- HUBBELL RECTANGULAR NONMETALLIC FLUSH FLOOR BOX WITH DUPLEX RECEPTACLE, FLANGE & ALUMINUM COVER - 2-GANG FLOOR BOX # FB2R, RECTANGULAR FLANGE # SA309AK, (2) ADAPTER COLLAR # FB2R, (2) COVER AND GASKET # SA309, (2) "CONTROLLED" RECEPTACLE # D30200Y (FLOOR OUTLETS WILL BE FURNISHED BY OWNER, CONTRACTOR SHALL INDICATE QUANTITY ON BID SHEET.)
- HUBBELL RECTANGULAR NONMETALLIC FLUSH FLOOR BOX WITH DUPLEX RECEPTACLE, FLANGE & ALUMINUM COVER - 2-GANG FLOOR BOX # FB2R, RECTANGULAR FLANGE # SA309AK, (2) ADAPTER COLLAR # FB2R, (2) COVER AND GASKET # SA309, (2) "CONTROLLED" RECEPTACLE # D30200Y (FLOOR OUTLETS WILL BE FURNISHED BY OWNER, CONTRACTOR SHALL INDICATE QUANTITY ON BID SHEET.)
- TELEPHONE OUTLET - BACKBOX AND PLASTER TRIM RING BY E.C. JACOBS AND DEVICES BY TELEPHONE DATA SYSTEM VENDOR.
- DATA OUTLET - BACKBOX AND PLASTER TRIM RING BY E.C. JACOBS AND DEVICES BY TELEPHONE DATA SYSTEM VENDOR.
- CONTRACTOR SHALL PROVIDE, INSTALL AND WIRE ALL BRANCH CIRCUIT BREAKERS AND ECB-G3 CONTROLLABLE CIRCUIT BREAKERS.
- JUNCTION BOX/OUTLET BOX-FLOOR, WALL OR CEILING MOUNTED
- HANDHOLE BOX FOR LED STRIP (ATTACHED (A)-HUB-120)
- CONTRACTOR SHALL PROVIDE, INSTALL AND WIRE ALL BRANCH CIRCUIT BREAKERS AND ECB-G3 CONTROLLABLE CIRCUIT BREAKERS.
- SWITCHED HOT CONDUCTORS (SHOWN TRACING NEUTRAL)
- UNSWITCHED HOT CONDUCTORS (SHOWN TRACING NEUTRAL)
- HUM RUN TO PANELBOARD, ARROWS INDICATE NUMBER OF CIRCUITS, HIGH NUMBERS INDICATE NUMBER OF CONDUCTORS. INFORMATION AT ARROWS ARE CIRCUIT #1-17 NUMBERS AND PANELBOARD.
- EQUIPMENT GROUNDING CONDUCTOR IN CONDUIT (GREEN INSULATION OR BARE)
- ISOLATED GROUNDING CONDUCTOR IN CONDUIT (GREEN INSULATION WITH YELLOW TRACKS)
- CONDUIT CONCEALED IN CEILING OR WALLS
- CONDUIT IN/UNDER FLOOR/DROUNG CONSTRUCTION
- EXPOSED CONDUIT
- LOW VOLTAGE CABLE (NOT ROUTED IN CONDUIT)
- CONDUIT SUBBURIED
- ELECTRICAL SERVICE PANELBOARD (SURFACE OR FLUSH MOUNT), TYPE AS NOTED
- PLYWOOD TERMINAL BOARD FOR TELEPHONE SYSTEM, UNO, SEE AS NOTED
- ELECTRICAL DISTRIBUTION PANELBOARD
- TRANSFORMER
- TIME SWITCH
- PUSH BUTTON FOR DOOR BELL
- FLUSH MOUNT BREAKER, FURNISHED AND INSTALLED BY BRAND VENDOR. REFER TO BRAND VENDOR DRAWINGS FOR EXACT LOCATION.
- SLAB BREAK DETECTOR BY OTHER.
- WITH LOCATED BY SPECIAL ORDER, INSTALL (1) BRUSH GANG JUNCTION BOX IN ACCESSIBLE CEILING SPACE FOR WIRING OF SLAB BREAK DETECTOR. INSTALL (1) BRUSH GANG JUNCTION BOX FLUSH IN ORIGINAL CEILING CEILING FOR SLAB BREAK DETECTOR. PROVIDE 3/4" GAP BETWEEN JUNCTION BOXES.
- SECURITY MONITOR FURNISHED AND INSTALLED BY CCV VENDOR
- BATF BOX
- BURGALAR ALARM SWIN
- ALARM KEY PAD
- DOOR ALARM
- DUCT MOUNTED SMOKE DETECTOR
- RD (RD-SUPPLY/NO-RETURN)
- PHOTO CELL, FURNISHED AND INSTALLED BY EMS VENDOR, WIRING BY E.C. REFER TO EMS DRAWINGS FOR WIRING DRAWING.



KEY PLAN
NO SCALE



1 FLOOR FIXTURE OUTLET DETAIL
SCALE: NOT TO SCALE

Order Plans @

RGLA
rgla solutions, inc.
5100 River Road, Ste 125
Schiller Park, IL 60176
F: 847.871.7422
www.rgla.com

REVISION	DATE
LL & ULTA REVIEW	06/20/19
BD ISSUE	06/20/19
PERMIT ISSUE	06/20/19

robot g. lyon + associates, inc.
118 W. Wacker Drive, Ste 1125
Chicago, IL 60601
5100 River Road, Ste 125
Schiller Park, IL 60176
F: 847.871.7422
www.rgl.com

THE ABOVE DRAWINGS AND SPECIFICATIONS AND CODES, ORDINANCES AND REGULATIONS REFERENCED THEREIN ARE AND SHALL BE CONSIDERED TO BE A PART OF THIS CONTRACT AND NO PART THEREOF SHALL BE CORRECTED, MODIFIED OR AMENDED UNLESS BY THE CONTRACTOR. THE CONTRACTOR SHALL BE RESPONSIBLE FOR OBTAINING ALL NECESSARY PERMITS AND APPROVALS FROM THE APPLICABLE AGENCIES AND AUTHORITIES. THE CONTRACTOR SHALL BE RESPONSIBLE FOR OBTAINING ALL NECESSARY PERMITS AND APPROVALS FROM THE APPLICABLE AGENCIES AND AUTHORITIES. THE CONTRACTOR SHALL BE RESPONSIBLE FOR OBTAINING ALL NECESSARY PERMITS AND APPROVALS FROM THE APPLICABLE AGENCIES AND AUTHORITIES.

ULTA BEAUTY
ULTA #613
SHOPPES OF MADISON
8201 HIGHWAY 72 WEST
SUITE C
MADISON, AL 35758

SYMBOL LIST, ONE LINE DIAGRAM AND LIGHTING SCHEDULE

DESIGNED BY	HE
CHECKED BY	HE
DATE	06/20/19
SHEET NO.	E0-1

HENDERSON ENGINEERS
8345 LENOVA DRIVE, SUITE 300
SELMA, AL 36514
TEL 913.742.5000 FAX 913.742.5001
WWW.HENDERSONENGINEERS.COM