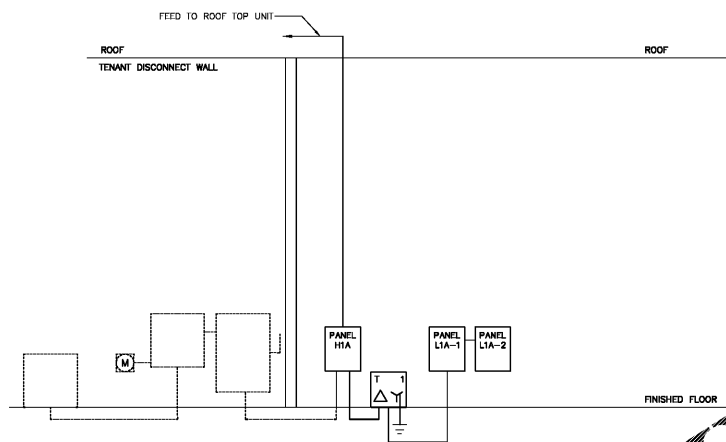


NOTES:

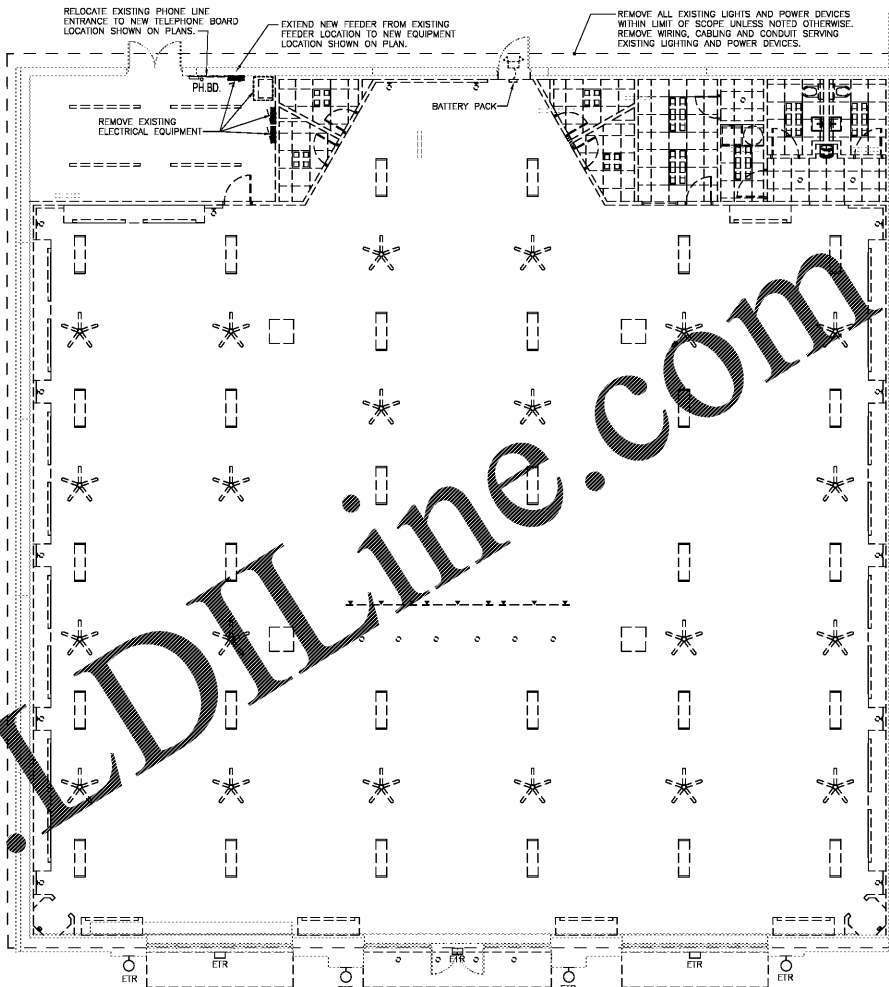
1. PRIOR TO SUBMITTING BID, VISIT THE JOB SITE AND BECOME FULLY ACQUAINTED WITH THE EXISTING CONDITIONS OF THE FACILITY. REVIEW THE GENERAL NOTES AND ALL OTHER TRADE DRAWINGS FOR ADDITIONAL REQUIREMENTS THAT MAY NOT BE CALLED OUT IN THIS PORTION OF THE CONSTRUCTION DOCUMENTS. NOTIFY ARCHITECT, ENGINEER OR OWNER, AS SPECIFIED, OF ANY CONFLICTS OR DISCREPANCIES PRIOR TO SUBMITTING BID.
2. EXISTING CONDITIONS WERE TAKEN FROM SITE VISITS AND MAY NOT REFLECT EXACT CONDITIONS. FIELD VERIFY ALL EXISTING CONDITIONS AND CAREFULLY COORDINATE NEW WORK AND DEMOLITION WITH ALL OTHER DISCIPLINES AND EXISTING CONDITIONS.
3. SEAL ALL PENETRATIONS THROUGH FLOORS, WALLS, CEILINGS, AND ROOF WHERE ELECTRICAL COMPONENTS ARE REMOVED AND WHERE THE EXISTING PENETRATION IS NOT USED FOR THE NEW INSTALLATION. REPAIR DAMAGED SURFACES TO MATCH ADJACENT AREAS.
4. LOCATIONS OF EXISTING EQUIPMENT SHOWN ARE APPROXIMATE. FIELD VERIFY ALL LOCATIONS.



ELECTRICAL DEMO ONE-LINE DIAGRAM
NO SCALE

LEGEND:

	DEMOTES WIRES AND EQUIPMENT TO BE REMOVED
	DEMOTES EXISTING EQUIPMENT TO REMAIN



FLOOR PLAN - ELECTRICAL DEMOLITION

SCALE: 1/8"=1'-0"



RGLA

rgla solutions, inc.
5100 River Road, Ste 125
Schiller Park, IL 60176
P: 847.871.7422
F: 847.871.4200
www.rgla.com

REVISION	DATE
LL & LTA REVIEW	06/03/2019
BID ISSUE	06/03/2019
PERMIT ISSUE	06/04/2019

robert g. lyon + associates, inc.
114 S. WASHINGTON ST., 11TH FLOOR
5100 River Road, Ste 125
Schiller Park, IL 60176
P: 847.871.7422
F: 847.871.4200
www.rgla.com

THE ABOVE DRAWINGS AND SPECIFICATIONS AND ALL OTHER INFORMATION REPRESENTED THEREIN ARE AND SHALL REMAIN THE PROPERTY OF THIS OFFICE, AND NO PART THEREOF SHALL BE COPIED, REPRODUCED, OR OTHERWISE USED IN THE CONSTRUCTION OF ANY PROJECT OTHER THAN THE SPECIFIC PROJECT FOR WHICH THEY WERE PREPARED AND DEVELOPED WITHOUT THE WRITTEN CONSENT OF HENDERSON ENGINEERS. CONTRACTORS SHALL VERIFY THE ACCURACY OF ALL DIMENSIONS AND CONDITIONS SHOWN IN THESE DRAWINGS BEFORE FABRICATION. HENDERSON ENGINEERS SHALL NOT BE RESPONSIBLE FOR ANY ERRORS OR OMISSIONS IN THESE DRAWINGS UNLESS SUCH ERRORS OR OMISSIONS ARE THE RESULT OF NEGLIGENCE OR MALPRACTICE ON THE PART OF HENDERSON ENGINEERS.

CULTA BEAUTY

ULTA #613
SHOPPES OF MADISON
8201 HIGHWAY 72 WEST
SUITE C
MADISON, AL 35758

FLOOR PLAN - ELECTRICAL DEMOLITION

DESIGNED BY	HEI
CHECKED BY	HEI
JOB NUMBER	19047
SHEET NAME	ED-1

HENDERSON ENGINEERS
8345 LENOVA DRIVE, SUITE 300
LITTLE ROCK, AR 72114
TEL 913.742.5000 FAX 913.742.5001
WWW.HENDERSONENGINEERS.COM
1850001785
AL CORPORATE TELENUMBER: CA-2185-E
EXPIRES 01/31/20

Order Plans @ www.LDILine.com