

PLAN NOTES

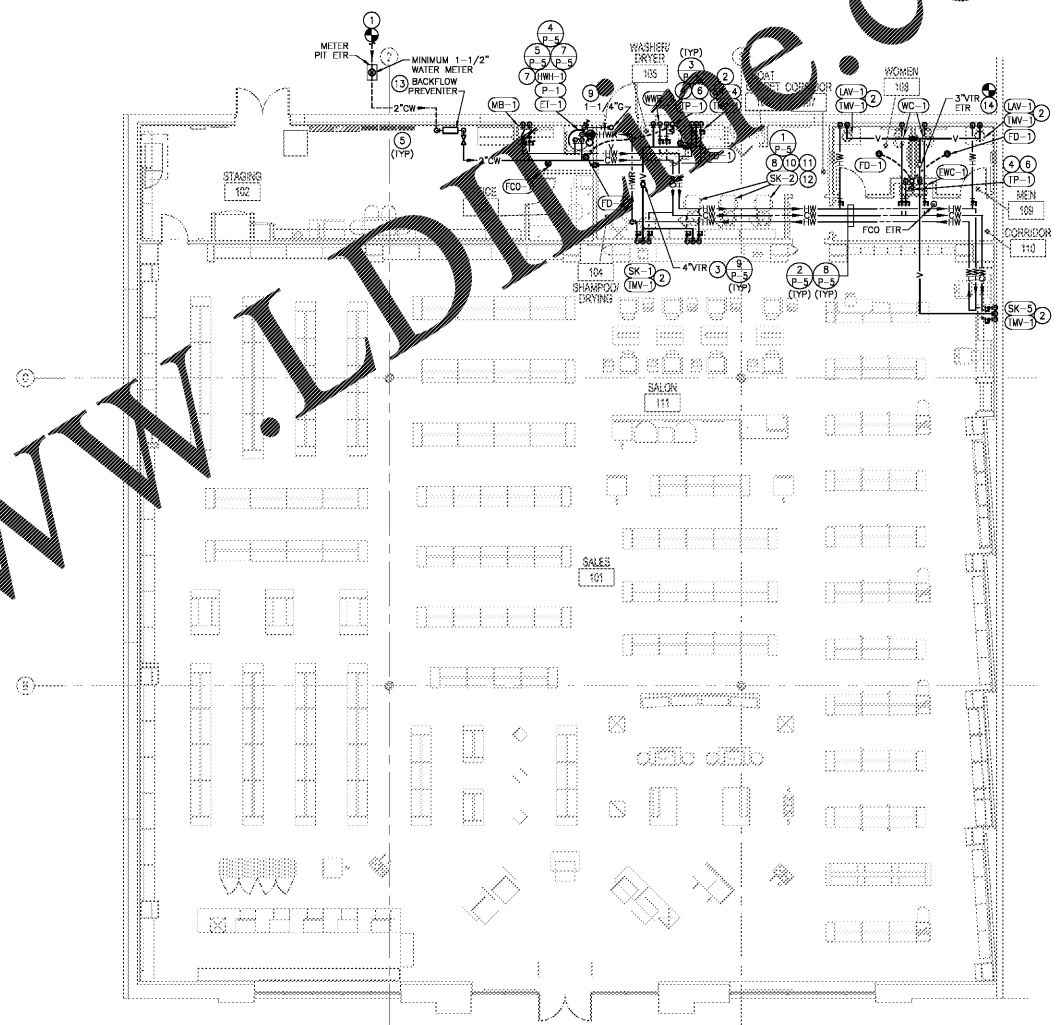
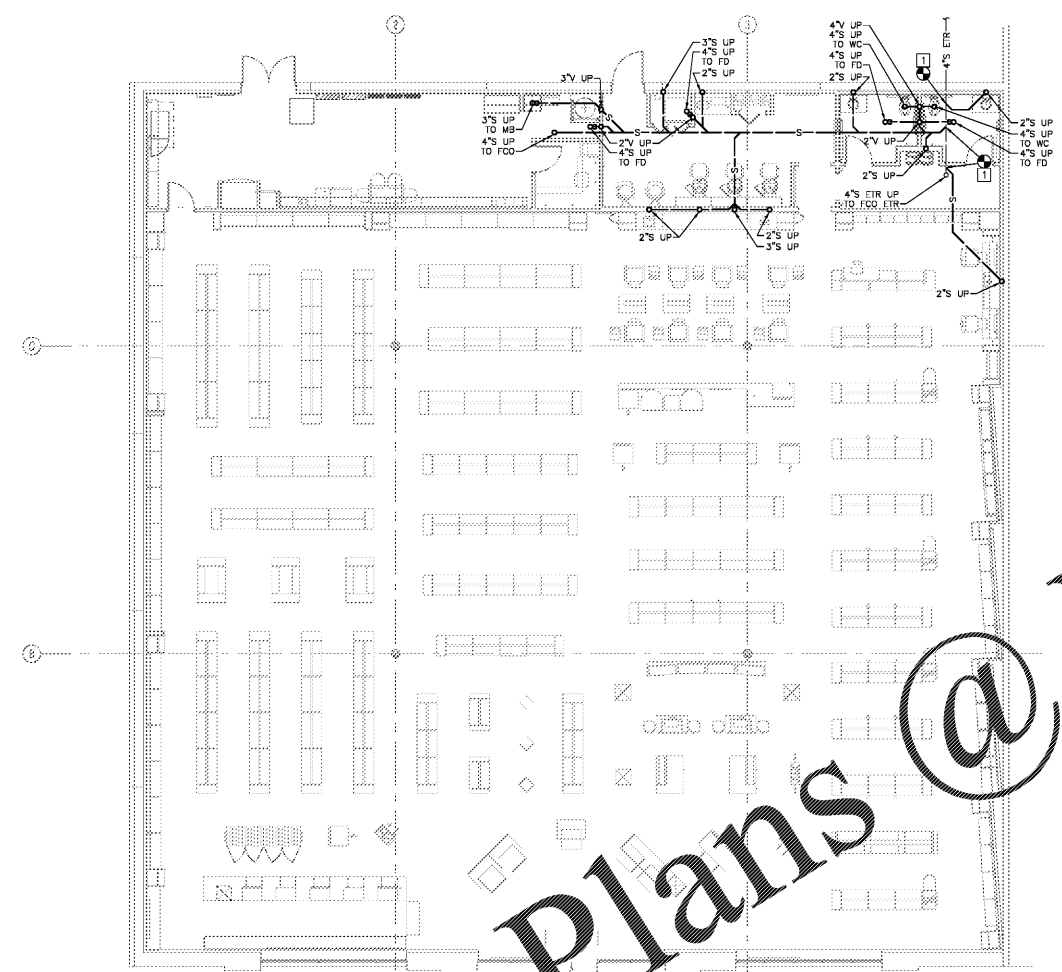
- CONNECT NEW SANITARY PIPING TO EXISTING SANITARY PIPING REMAINING FROM DEMOLITION WORK. FIELD COORDINATE EXACT LOCATION, SIZE, INVERT ELEVATION AND DIRECTION OF FLOW OF THE EXISTING SANITARY PIPING PRIOR TO CONSTRUCTION. ADJUST THE NEW SANITARY PIPING AS REQUIRED TO ALLOW FOR CONNECTION TO THE EXISTING SANITARY PIPING SYSTEM.

LEGEND

— EXISTING
— NEW

PLAN NOTES

- COORDINATE WITH THE CITY OF MADISON WATER UTILITY TO INSTALL A NEW 2" DOMESTIC COLD WATER SERVICE LINE FROM EXISTING CITY WATER MAIN OUTSIDE ULTA SPACE, REAR EXTERIOR WALL, AND TO INSTALL A NEW MINIMUM 1-1/2" WATER METER. ROUTE NEW 2" COLD WATER SERVICE LINE FROM METER TO ULTA SPACE. IF CITY WATER PRESSURE EXCEEDS 80 PSI, COORDINATE WITH THE CITY OF MADISON WATER UTILITY TO INSTALL PRESSURE REDUCING VALVE. FIELD VERIFY THE EXACT LOCATION AND SIZE OF THE EXISTING WATER SYSTEM PRIOR TO CONSTRUCTION. ADJUST THE NEW WATER LAYOUT AS REQUIRED TO ALLOW FOR CONNECTION TO THE EXISTING WATER SYSTEM.
- MIXING VALVE LOCATED BELOW COUNTERTOP. SEE SHEET P-4 FOR SCHEDULE. SET TEMPERATURE AS REQUIRED BY AUTHORITIES HAVING JURISDICTION.
- INSTALL NEW VENT THRU ROOF. COORDINATE EXACT LOCATION TO BE MINIMUM 10'-0" AWAY FROM ALL FRESH AIR INTAKES.
- INSTALL TRAP PRIMER IN THE WALL. PROVIDE AN ACCESS PANEL AS NECESSARY TO MAINTAIN EQUIPMENT.
- THIS SPACE IS RESERVED FOR ELECTRICAL EQUIPMENT. NO PIPING SHALL PASS BELOW, ABOVE, OR AROUND ELECTRICAL EQUIPMENT. PROVIDE CODE REQUIRED MINIMUM CLEARANCE ABOVE ELECTRICAL EQUIPMENT ACCESS SPACE.
- 1/2" FLEXIBLE CONTINUOUS TYPE "K" COPPER TUBING BELOW GRADE FROM TRAP PRIMER TO FLOOR DRAIN. NO FITTINGS OR SPLICES ARE ALLOWED BELOW GRADE.
- PIPE WATER HEATER RELIEF TO THE NEAREST FLOOR DRAIN BELOW THE WATER HEATER. PROVIDE A CODE APPROVED AIR GAP ON THE DISCHARGE OF THE WATER HEATER RELIEF. REFER TO DETAILS SHEET FOR ADDITIONAL INFORMATION.
- HAIR TRAP BELOW EACH SINK, PROVIDED BY SINK VENDOR.
- CONNECT NEW 1-1/4" GAS PIPING TO GAS STUB THRU ROOF SERVING 188,000 BTUH.
- CONTRACTOR SHALL RUN VENT TO ONE SIDE OF CHASE IN SHAMPOO WALL, TO ALLOW ROOM FOR ELECTRICAL CONDUIT INSTALLATION.
- INSTALL THERMOSTATIC MIXING VALVE AT FIXTURE FURNISHED BY SHAMPOO BOWL SUPPLIER. SET TEMPERATURE AS REQUIRED BY AUTHORITIES HAVING JURISDICTION.
- COORDINATE PLUMBING FIXTURE AND ROUGH IN LOCATIONS WITH FIXTURE LOCATIONS INDICATED ON ARCHITECTURAL PLANS AND DETAILS.
- INSTALL NEW 2" DOUBLE CHECK VALVE BACKFLOW PREVENTER W/ATS # LF71901S OR EQUAL. COORDINATE BACKFLOW PREVENTER REQUIREMENTS WITH THE CITY OF MADISON WATER UTILITY.
- CONNECT TO EXISTING VENT THRU ROOF REMAINING FROM DEMOLITION WORK. FIELD VERIFY EXISTING CONDITIONS.



Order Plans @ www.LDilvine.com

www.LDilvine.com

RGLA
r gla solutions, inc.
5100 River Road, Ste 125
Schiller Park, IL 60176
T: 847.871.7422
F: 847.871.4200
www.rgla.com

REVISION	DATE
LL & LTA REVIEW	06/03/19
BD ISSUE	06/03/19
PERM1 ISSUE	06/04/19

robert g. lyon + associates, inc.
114 N. WASHINGTON ST.
5100 River Road, Ste 125
Schiller Park, IL 60176
T: 847.871.7422
F: 847.871.4200
www.rgla.com

SEAL:

THE ABOVE DRAWINGS AND SPECIFICATIONS REPRESENT THE DESIGN AND CONSTRUCTION OF THE PROJECT AND SHALL BE CONSIDERED TO BE THE PROPERTY OF THIS OFFICE. NO PART THEREOF SHALL BE COPIED, REPRODUCED, OR TRANSMITTED IN ANY FORM OR BY ANY MEANS, WITHOUT THE WRITTEN CONSENT OF THE ENGINEER. THE ENGINEER SHALL NOT BE RESPONSIBLE FOR ANY DAMAGE TO PERSONS OR PROPERTY ARISING FROM THE USE OF THESE DRAWINGS OR SPECIFICATIONS. THE ENGINEER'S LIABILITY IS LIMITED TO THE PROFESSIONAL SERVICES PROVIDED BY HIMSELF OR HIS EMPLOYEES OR AGENTS. THE ENGINEER SHALL NOT BE RESPONSIBLE FOR THE ACTIONS OF ANY OTHER PROFESSIONAL ENGINEERS OR ARCHITECTS WHOSE SERVICES ARE USED IN CONNECTION WITH THESE DRAWINGS OR SPECIFICATIONS.

R. G. LYON
REGISTERED PROFESSIONAL ENGINEER
NO. 123456789
STATE OF ILLINOIS

ULTA BEAUTY

ULTA #613
SHOPPES OF MADISON
8201 HIGHWAY 72 WEST
SUITE C
MADISON, AL 35758

PLUMBING PLANS AND NOTES

DESIGNED BY	MAJ
CHECKED BY	RCB
JOB NUMBER	19047
SHEET NAME	P-1

HENDERSON ENGINEERS
185001765
AL CORPORATE TEL NUMBER: CA-2185-E
EXPRESS 01/01/20

1 UNDERGROUND PLUMBING PLAN
SCALE: 1/8" = 1'-0"

2 PLUMBING FLOOR PLAN
SCALE: 1/8" = 1'-0"