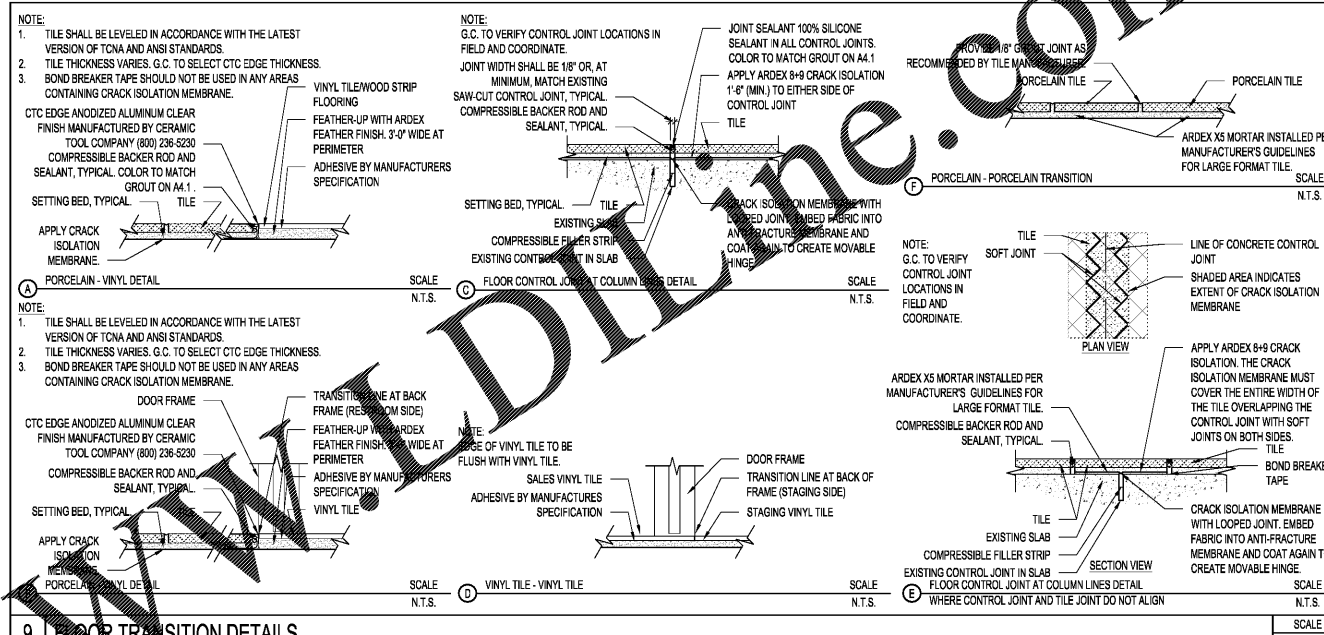
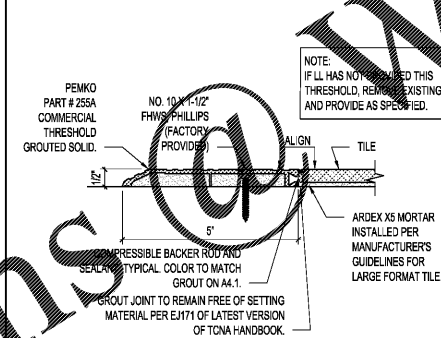


REVISIONS	DATE
LL & ULTA REVIEW	09/03/2019
BID ISSUE	09/03/2019
PERMIT ISSUE	09/04/2019

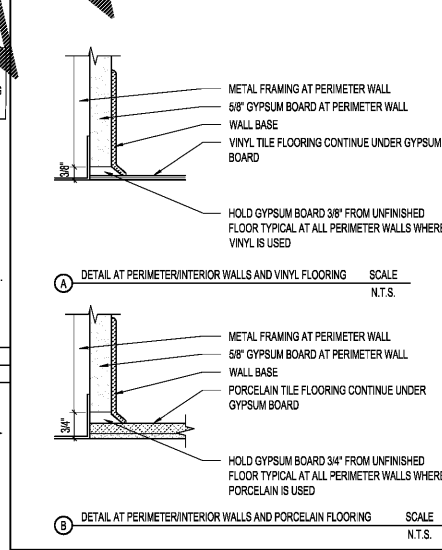
robert g. lyon + associates, inc.
 1111 S. W. 11th St., Suite 110
 5100 River Road, Ste 125
 Schiller Park, IL 60176
 P: 847.671.4420
 F: 847.671.4200
 www.rgla.com



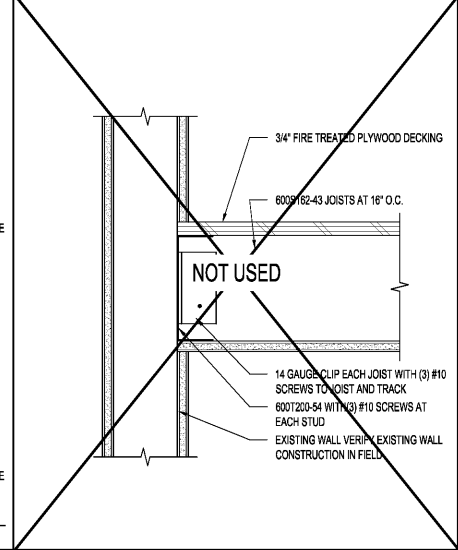
9 FLOOR TRANSITION DETAILS SCALE N.T.S.



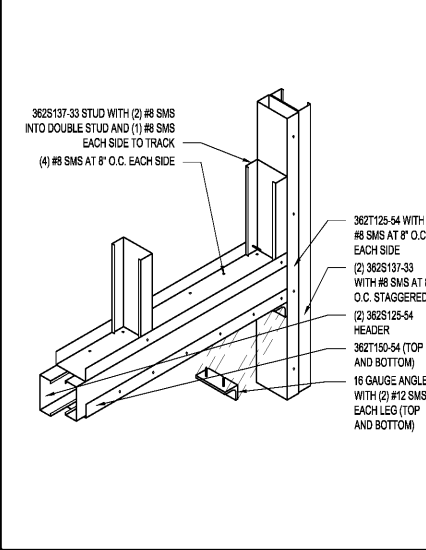
10 ENTRY DOOR TRANSITION SCALE N.T.S.



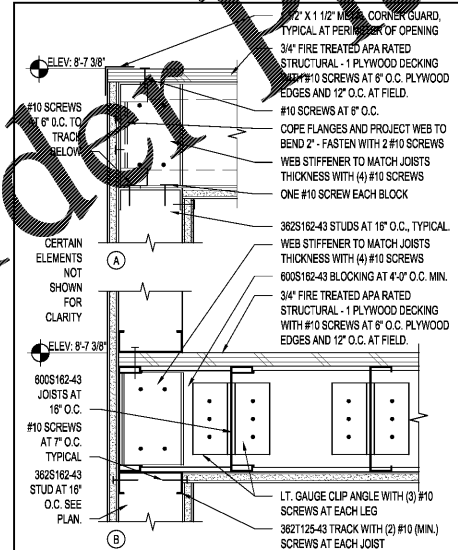
8 DETAIL AT PERIMETER WALLS SCALE N.T.S.



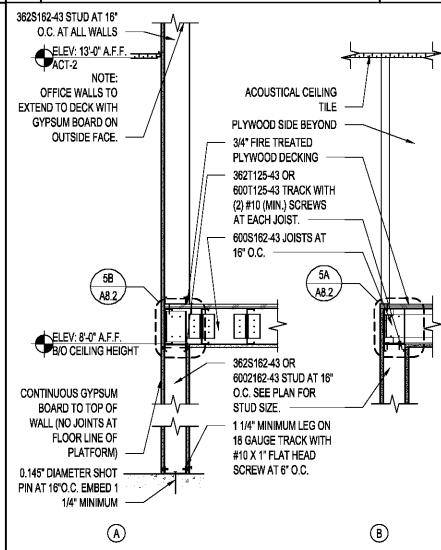
7 OFFICE STORAGE FRAMING AT EXISTING WALL SCALE N.T.S.



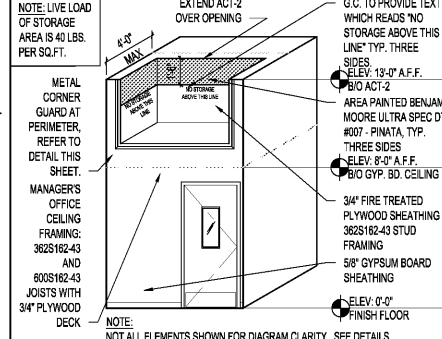
6 OFFICE STORAGE HEADER DETAIL SCALE N.T.S.



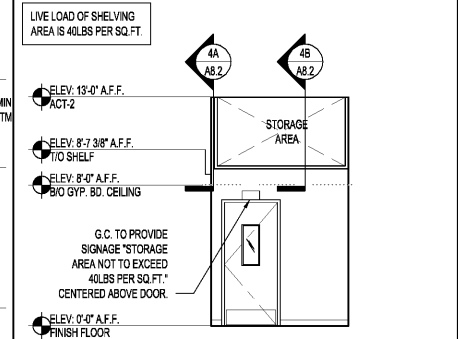
5 OFFICE STORAGE FRAMING DETAILS SCALE 3/4"=1'-0"



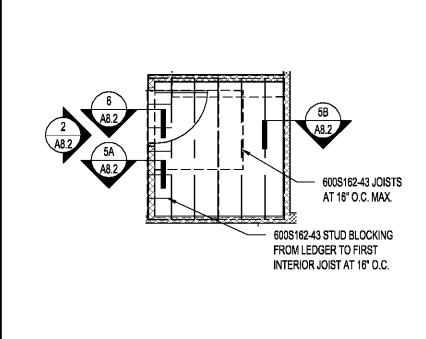
4 OFFICE STORAGE FRAMING DETAILS SCALE 1/4"=1'-0"



3 OFFICE STORAGE DIAGRAM SCALE 1/4"=1'-0"



2 OFFICE STORAGE ELEVATION DETAIL SCALE 1/4"=1'-0"



1 OFFICE STORAGE FRAMING PLAN SCALE 1/4"=1'-0"

THE ABOVE DRAWINGS AND SPECIFICATIONS ARE THE PROPERTY OF RGLA AND SHALL REMAIN THE PROPERTY OF THIS OFFICE AND NO PART THEREOF SHALL BE COPIED, REPRODUCED, OR OTHERWISE USED IN ANY MANNER WITHOUT THE WRITTEN CONSENT OF THIS OFFICE. VISUAL CONTACT WITH ANY OTHER PARTY IS STRICTLY PROHIBITED. RGLA SHALL NOT BE RESPONSIBLE FOR ANY ERRORS OR OMISSIONS IN THESE DRAWINGS AND SPECIFICATIONS. VISUAL CONTACT WITH ANY OTHER PARTY IS STRICTLY PROHIBITED. RGLA SHALL NOT BE RESPONSIBLE FOR ANY ERRORS OR OMISSIONS IN THESE DRAWINGS AND SPECIFICATIONS.



ULTA #1813
 SHOPS OF MADISON
 8201 HIGHWAY 72 WEST
 SUITE C
 MADISON, AL 35758

FRAMING PLAN AND DETAILS

DESIGNED BY: IA
 CHECKED BY: PK
 JOB NUMBER: 19047
 SHEET NAME: A8.2