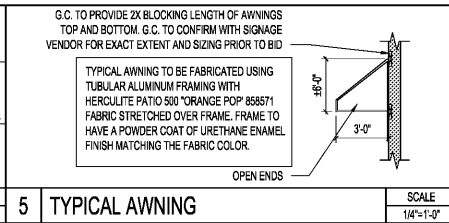
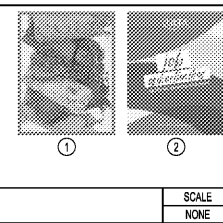


- NOTE:
- EXTERIOR ELEVATION SIGNAGE FOR REFERENCE ONLY.
  - POWER CONNECTION FOR SIGN NEEDS TO BE WITHIN 8 FT. FROM SIGN. G.C. TO COORDINATE SIGN AND AWNING INSTALLATION WITH ULTA SIGN VENDOR (KIEFFER SIGNS) PRIOR TO ROUGH-IN. SEE CS3.0 SHEET FOR SIGN VENDOR CONTACT INFO.
  - G.C. TO VERIFY QUALITY OF EXISTING EXTERIOR FINISHES. FOR EXAMPLE, PATCH AND REPAIR AREAS OF FINISHES. NOTIFY ULTA CONSTRUCTION MANAGER OF ANY AREAS REQUIRING WORK. IF AREAS OF EXTERIOR FINISH WORK ARE REQUIRED SEPARATE OUT THIS COST WITH EXPLANATION IN BID.
  - G.C. TO CAULK AROUND WALL PENETRATIONS CREATED BY SIGN INSTALLATIONS. CAULK COLOR TO MATCH EXTERIOR FINISH.
  - G.C. TO PATCH, REPAIR AND PAINT EXTERIOR TO MATCH EXISTING.
  - THE OPENING SOON AND NOW OPEN BANNERS WILL BE FURNISHED BY ULTA AND INSTALLED BY G.C. TO REFER TO INSTALLATION GUIDELINE PROVIDED BY SIGN VENDOR.

KEY	MATERIAL DESCRIPTION	MFG.	SPECIFICATIONS	NOTES
AW-1	AWNING	KIEFFER SIGNS	HERCULITE PATIO 500 "ORANGE POP" 868571	SEE VENDOR INFO ON CS3.0 FOR ULTA NATIONAL ACCOUNT ALL COPY/IRUL E LINE WILL BE WHITE PAINTED GRAPHICS APPLIED TO FABRIC. AWNING FRAME TO HAVE A URETHANE ENAMEL OR POWDER COATED FINISH MATCHING THE FABRIC COLOR ORANGE POP.
EP-1	EXTERIOR PAINT	SHERWIN WILLIAMS	COLOR: SW7005 PURE WHITE	PROVIDED BY G.C.



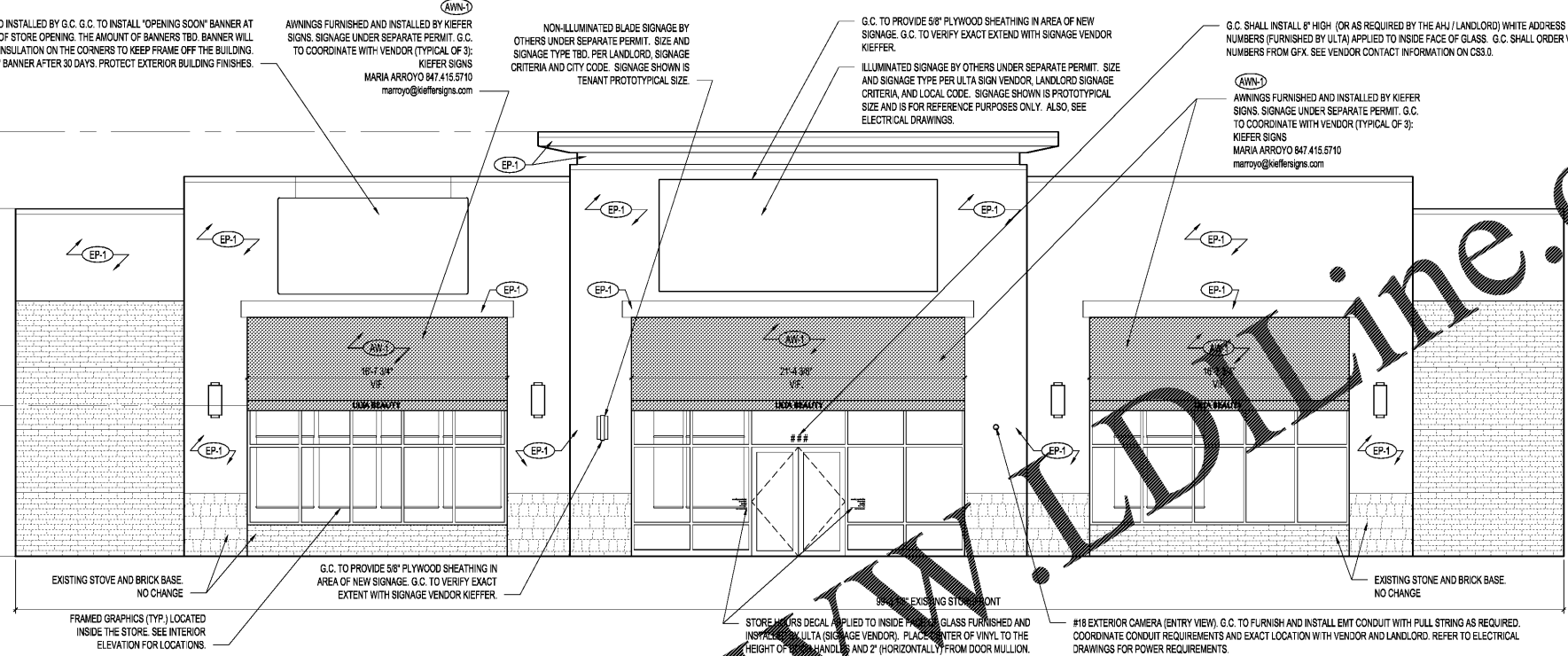
- NOTE:
- WINDOW CONSTRUCTION BANNERS FURNISHED BY ULTA. INSTALLED BY G.C. G.C. TO INSTALL WINDOW CONSTRUCTION BANNERS ALTERNATELY ON EVERY STOREFRONT WINDOW. VERIFY WITH ULTA CONSTRUCTION MANAGER PRIOR TO INSTALLATION.
  - SEND DIGITAL PICTURES TO ULTA ONCE BANNERS ARE INSTALLED (WEEK 1).
  - ATTACH THE BANNERS TO THE STORE FRONT WINDOWS USING THE TAPE ON THE FRONT OF THE BANNERS. REPEAT THE LAYOUT PATTERN UNTIL WINDOWS ARE COVERED.
  - RE-ATTACH WITH TAPE TO ALU FRAMES AFTER FINAL CLEANING.
  - CONSTRUCTION BANNERS ARE TEMPORARY AND ARE REMOVED PRIOR TO STORE OPENING.
  - CONSTRUCTION BANNERS ARE NOT APPLICABLE TO MALL STOREFRONT. COORDINATE BARRICADE GRAPHICS WITH ULTA.



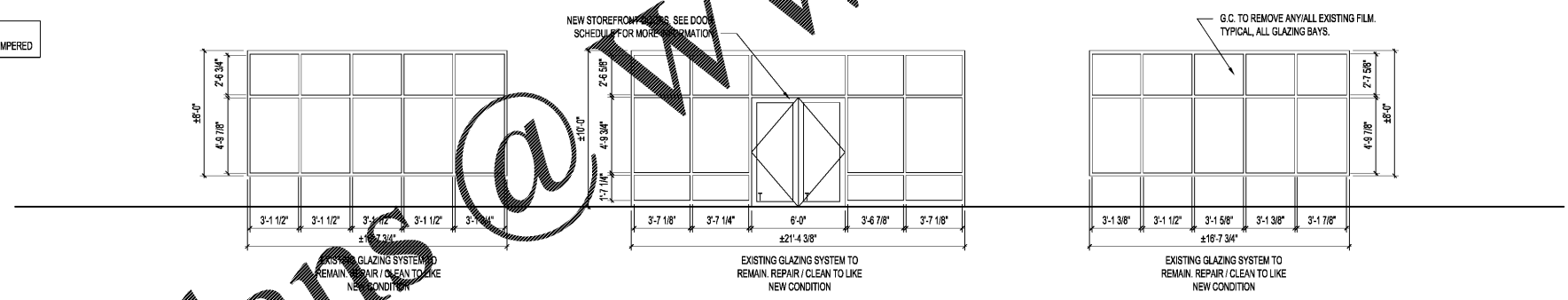
**RGLA**  
rgla solutions, inc.  
5100 River Road, Ste 125  
Schiller Park, IL 60176  
p. 847.671.7420  
f. 847.671.4200  
www.rgla.com

REVISION	DATE
LL & ULTA REVIEW	09/03/2019
BID ISSUE	09/03/2019
PERMIT ISSUE	09/04/2019

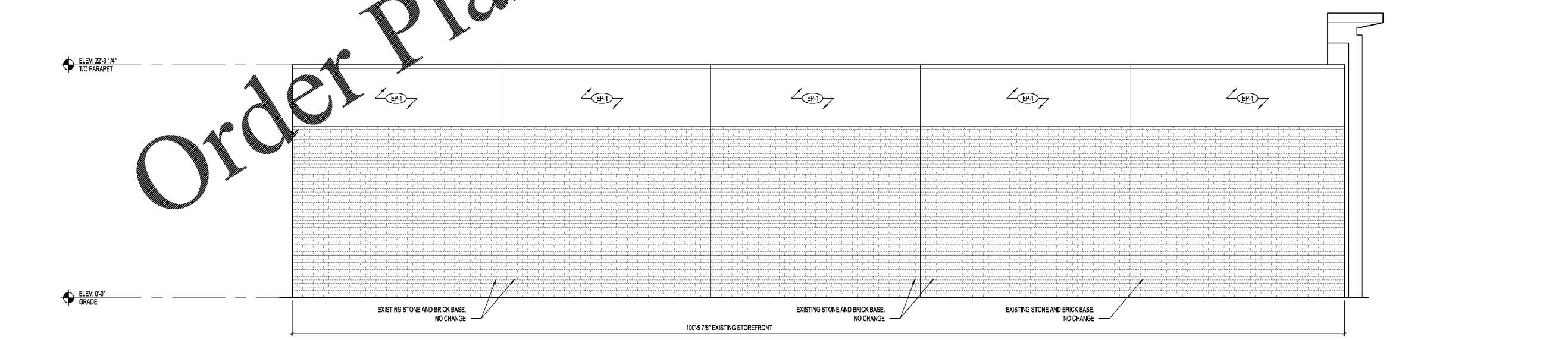
**robert g. lyon + associates, inc.**  
111 S. Wacker Drive, Suite 1100  
Chicago, IL 60606  
6100 River Road, Ste 125  
Schiller Park, IL 60176  
T: 847.671.4200  
www.rgla.com



3 FRONT EXTERIOR ELEVATION SCALE 1/4"=1'-0"



2 FRONT GLAZING ELEVATION SCALE 1/4"=1'-0"



1 SIDE EXTERIOR ELEVATION SCALE 1/4"=1'-0"

SCALE:

THE ABOVE DRAWINGS AND SPECIFICATIONS ARE THE SOLE RESPONSIBILITY OF THE ARCHITECT AND SHALL BE CONSIDERED AS SUCH. THE ARCHITECT SHALL BE RESPONSIBLE FOR THE ACCURACY OF THE INFORMATION PROVIDED HEREIN. THE ARCHITECT SHALL NOT BE RESPONSIBLE FOR THE ACCURACY OF THE INFORMATION PROVIDED BY OTHERS. THE ARCHITECT SHALL NOT BE RESPONSIBLE FOR THE ACCURACY OF THE INFORMATION PROVIDED BY OTHERS. THE ARCHITECT SHALL NOT BE RESPONSIBLE FOR THE ACCURACY OF THE INFORMATION PROVIDED BY OTHERS.

**ULTA BEAUTY**

ULTA #1813  
SHOPPES OF MADISON  
8201 HIGHWAY 72 WEST  
SUITE C  
MADISON, AL 35758

EXTERIOR ELEVATIONS	
DESIGNED BY	IA
CHECKED BY	PK
JOB NUMBER	19047
SHEET NAME	A7.1