

REVISION	DATE
LL & ULTA REVIEW	09/09/2019
BID ISSUE	09/09/2019
PERMIT ISSUE	09/04/2019

1916 Anderson Blvd.
 2174 W. 4th St., Suite 200, Des Moines, IA 50319
 515-281-1422
 www.rela.com

THE ABOVE DRAWINGS AND SPECIFICATIONS REPRESENT THE DESIGN AND CONSTRUCTION OF THE PROJECT. THE CONTRACTOR SHALL BE RESPONSIBLE FOR OBTAINING ALL NECESSARY PERMITS AND APPROVALS FROM THE LOCAL AUTHORITIES. THE CONTRACTOR SHALL BE RESPONSIBLE FOR OBTAINING ALL NECESSARY PERMITS AND APPROVALS FROM THE LOCAL AUTHORITIES. THE CONTRACTOR SHALL BE RESPONSIBLE FOR OBTAINING ALL NECESSARY PERMITS AND APPROVALS FROM THE LOCAL AUTHORITIES.

ULTA
 ULTA #1813
 SHOPS OF MADISON
 8201 HIGHWAY 72 WEST
 SUITE C
 MADISON, IA 53758

DESIGNED BY	IA
CHECKED BY	PK
JOB NUMBER	19047
SHEET NAME	A2.4

100-STOREFRONT ENTRY

ITEM	QUANTITY	FINISH	MANUFACTURER	MODEL #
CVR EXIT DEVICE	2	-	ADAMS RITE	8600-36-US32D-MEC
ESCUTOCHON	1	-	ADAMS RITE	8660-US32D
MORTISE CYLINDER	1	-	-	8687 7 PIN SPIC COMPATIBLE
BUTTS	3 PR.	-	-	4 1/2" X 4 1/2" B.B. W/IN REMOVABLE FIN (BY S.F. MANUFACTURER)
PULL	2	US32D	ROCKWOOD	RMB131 (12" CTC)
CLOSER/PIVOTS	2	-	-	TOP JAMB MOUNTING
THRESHOLD	1	ALUM.	PEMCO #255A (GROUT SOLID)	IN COMPLIANCE WITH ANSI CABO 117.4A.13.B.
WEATHER STRIP	2	-	-	GASKETING AND SILL SWEEPS BY STOREFRONT MANUFACTURER

106-COAT CLOSET

ITEM	QUANTITY	FINISH	MANUFACTURER	MODEL #
TRACK	1	-	JOHNSON	100
TOP PIVOT SET	1	-	JOHNSON	107
DOOR HANGER	1	-	JOHNSON	1125
TRACK STOP	1	-	JOHNSON	1155
PANEL HINGE	1-1/2 PR.	-	JOHNSON	1703
BOTTOM PIVOT	1	-	JOHNSON	1706
BOTTOM PIVOT BRACKET	1	-	JOHNSON	1011
DOOR ALIGNER	1	-	JOHNSON	1808
DOOR KNOB	1	-	JOHNSON	33

101-STAGING

ITEM	QUANTITY	FINISH	MANUFACTURER	MODEL #
BUTTS	1-1/2 PR.	US26-D	MCKINNEY	1 EA 1502 4 1/2" X 4 1/2" (MIDDLE) 2 EA MPB79 4 1/2" X 4 1/2" (TOP AND BTM.)
LOCKSET	1	626	YALE	PASSAGE LOCKSET AUSA01LN
VISION PANEL	1	ONE WAY	-	12" X 28" ONE WAY GLASS MIRROR TEMPERED GLASS
STOP	1	US26D	ROCKWOOD	440
KICKPLATE	2	US32-D	ROCKWOOD	K1050, 10" HIGH X 34" WIDE
CLOSER	1	689	DORMA	7414-ARP-SNB

107-WOMEN'S TOILET / 108-MEN'S TOILET

ITEM	QUANTITY	FINISH	MANUFACTURER	MODEL #
BUTTS	1-1/2 PR.	US26-D	MCKINNEY	1 EA 1502 4 1/2" X 4 1/2" (MIDDLE) 2 EA MPB79 4 1/2" X 4 1/2" (TOP AND BTM.)
LOCKSET	1	626	YALE	PRIVACY LOCKSET AUSA02LN
STOP	1	US26D	ROCKWOOD	440
CLOSER	1	689	DORMA	7414-ARP-SNB
KICKPLATE	1	US32-D	ROCKWOOD	K1050, 10" HIGH X 34" WIDE - ON PATH OF TRAVEL SIDE

102-RECEIVING

*EXISTING DOOR. G.C. TO ENSURE IT IS IN GOOD WORKING ORDER

ITEM	QUANTITY	FINISH	MANUFACTURER	MODEL #
BUTTS	3 PR.	S.S.	BOMMER	BB5000 4 1/2" X 4 1/2"
CLOSER	EXIST.	-	-	HEAVY DUTY SPEC WITH THRU BOLTS, 1808 STRIKE
THRESHOLD	EXIST.	-	-	IN COMPLIANCE WITH ANSI CABO 117.4A.13B
WEATHER STRIPING	1 SET	-	-	GASKETING AND SILL SWEEP
RAINHOOD	EXIST.	-	-	-
VIEWER	1	S.S.	ASD	#DS238
KICKPLATE	2	S.S.S.	ROCKWOOD	K1050, 10" HIGH X 34" WIDE - PUSH SIDE
FLUSH BOLT	1 PR. EXIST.	S.S.	MTD.	ON INACTIVE LEAF
SILENCERS	AS NEEDED	-	-	ROCKWOOD 608
PANIC DEVICE	-	-	LOCKNET	SECURITECH TROJENT LOCKNET CONTACT, JEFF CARROLL 800.887.4307 X239
DOOR HOLDER	2	US26-D	ROCKWOOD	461L KICKDOWN STOP 4-56"
DOOR BELL	1	-	EDWARDS SIGNALING	156G SERIES WITH TRANSFORMERS AND WEATHERPROOF PUSH BUTTONS TRINE 65P

103-OFFICE

ITEM	QUANTITY	FINISH	MANUFACTURER	MODEL #
BUTTS	1-1/2 PR.	US26-D	MCKINNEY	1 EA 1502 4 1/2" X 4 1/2" (MIDDLE) 2 EA MPB79 4 1/2" X 4 1/2" (TOP AND BTM.)
LOCKSET	1	626	YALE	ENTRANCE LOCKSET B-AUSA07LN
STOP	1	US26D	ROCKWOOD	440
VISION PANEL	1	ONE WAY	-	12" X 28" ONE WAY GLASS MIRROR TEMPERED GLASS
CLOSER	1	689	DORMA	7414-ARP-SNB
KICKPLATE	2	US32-D	ROCKWOOD	K1050, 10" HIGH X 34" WIDE - ON PATH OF TRAVEL SIDE

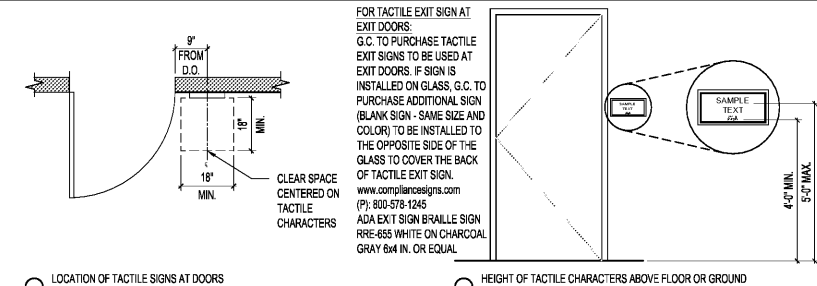
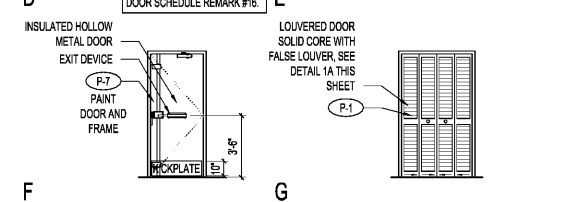
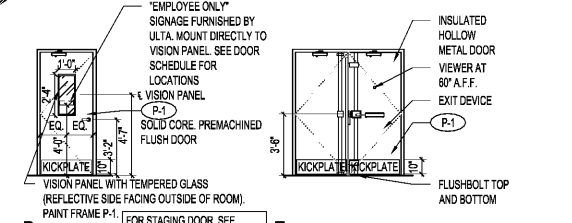
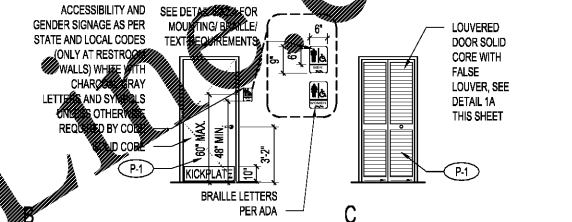
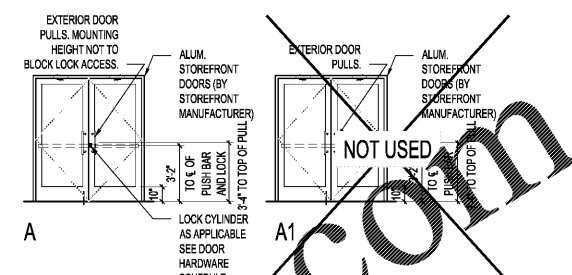
104-EXTERIOR EXIT

*EXISTING DOOR. G.C. TO ENSURE IT IS IN GOOD WORKING ORDER

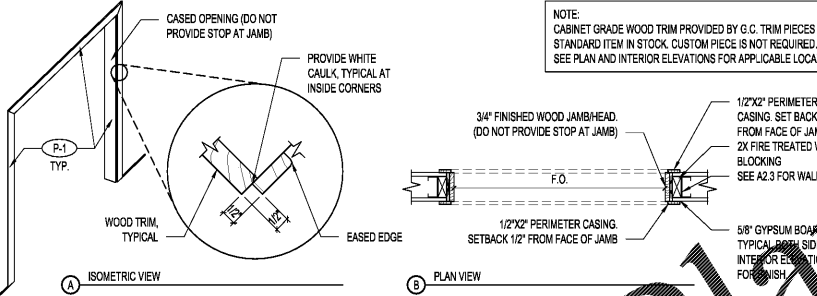
ITEM	QUANTITY	FINISH	MANUFACTURER	MODEL #
BUTTS	EXIST.	S.S.	-	4 1/2" X 4 1/2" HEAVY DUTY
THRESHOLD	1	-	-	IN COMPLIANCE WITH ANSI CABO 117.4A.13B
CLOSER	EXIST.	-	-	HEAVY DUTY SPEC WITH THRU BOLTS, 1808 STRIKE
KICKPLATE	1	S.S.	ROCKWOOD	K1050, 10" HIGH X 40" WIDE - PUSH SIDE
WEATHER STRIPING	1 SET	-	-	GASKETS AND SILL SWEEPS
PANIC DEVICE	-	-	LOCKNET	SECURITECH TROJENT LOCKNET CONTACT, JEFF CARROLL 800.887.4307 X239

105-WASHER DRYER

ITEM	QUANTITY	FINISH	MANUFACTURER	MODEL #
TRACK	1	-	JOHNSON	100
TOP PIVOT SET	2	-	JOHNSON	107
DOOR HANGER	2	-	JOHNSON	1125
TRACK STOP	2	-	JOHNSON	1155
PANEL HINGE	3 PR.	-	JOHNSON	1703
BOTTOM PIVOT	2	-	JOHNSON	1706
BOTTOM PIVOT BRACKET	2	-	JOHNSON	1011
DOOR ALIGNER	1	-	JOHNSON	1808
DOOR KNOB	2	-	JOHNSON	33



6 LOCATION OF TACTILE SIGNS AT DOORS SCALE N.T.S.



5 WOOD CASED WALL OPENING DETAIL SCALE N.T.S.

MARK	LOCATION	TYPE	SIZE	DOOR	FRAME TYPE	FINISH	HARDWARE	REMARKS	REMARKS
100	ENTRY	A	(2) 3'-0" x 7'-0" x 1 3/4"	GLASS	ALUMINUM	SEE DOOR TYPE	100	1,3,5,6,7,8,9,10	1. ALL HARDWARE SHALL CONFORM TO ALL APPLICABLE FEDERAL, STATE AND LOCAL ACCESSIBILITY CODES (INCLUDING BUT NOT LIMITED TO MOUNTING HEIGHTS, OPERATING FORCE, & GRIP REQUIREMENTS). 2. ALL TRIM FOR INTERIOR DOORS TO MATCH DOOR FINISH. 3. ALL EXTERIOR DOOR HARDWARE SHALL BE PROVIDED BY G.C. UNLESS NOTED OTHERWISE. 4. G.C. VERIFY HARDWARE ON EXISTING EXTERIOR DOORS. 5. ALL EXITS TO BE OPERABLE FROM INSIDE WITHOUT KEY OR SPECIAL KNOWLEDGE. 6. G.C. TO REPLACE CONSTRUCTION LOCK CYLINDER WITH ULTA SPECIFIC LOCK CYLINDER. 7. EXTERIOR EXIT DOOR SHALL HAVE SIGN ON OR ADJACENT TO DOOR THAT STATES THIS DOOR TO REMAIN UNLOCKED (WHEN THE BUILDING IS OCCUPIED) WITH 1" HIGH LETTERS IN CONTRASTING COLOR WITH BACKGROUND. 8. DOORS SHALL HAVE A SECOND MINIMUM CLOSING TIME FROM 80"-60" OPEN. MAXIMUM EFFORT TO OPERATE DOORS SHALL NOT EXCEED: A. 8.0 L.B.F. (22 N) FOR INTERIOR DOORS. B. 15.0 L.B.F. (42 N) FOR EXTERIOR DOORS. C. 15.0 L.B.F. (42 N) FOR FIRE DOORS. 9. ADJUST CLOSER SO THAT IT COMPLIES WITH THESE REQUIREMENTS. COORDINATE LOCATION AND MOUNTING HEIGHT FOR THE CLOSER OF OPERATION. DETAILS WITH ULTA. 10. LOCKNET HARDWARE: TO CONTACT LOCKNET AT START OF CONSTRUCTION. G.C. TO COORDINATE INSTALLATION WITH LOCKNET. LOCKNET CONTACT: JEFF CARROLL 800.887.4307 EXT. 239 11. HM FRAMES TO BE INNOCK DOWN TYPE AND TO BE INSTALLED AFTER FLOORING INSTALLATION. FINISH FRAME JOISTS TO PROVIDE AN EVEN SURFACE AND NO IMPERFECTIONS. ALL SCREWS SHALL BE RECESSED. CAULK FRAME TO WALL. 12. G.C. TO INSTALL ULTA SUPPLIED STICKER WITH STORE TELEPHONE NUMBER ON REAR DOOR TO COORDINATE DELIVERIES AFTER CONSTRUCTION. 13. G.C. TO PURCHASE ALL DOORS, FRAMES, AND HARDWARE THROUGH LOCKNET. LOCKNET CONTACT: KORY CHANDLER 800.887.4307 EXT. 175 UNDERCUT DOOR TYPE. SEE ALSO MECHANICAL DRAWINGS. 14. G.C. TO INSTALL 'EMPLOYEE ONLY' SIGNAGE. 15. PAINT DOOR AND FRAME P-1 (BOTH SIDES). REFER TO FINISH SPECIFICATIONS ON A1 SHEET. 16. ALL WOOD DOOR CLOSERS ARE TO BE INSTALLED WITH THRU BOLTS WITH SNB FASTENERS. 17. PROVIDE TACTILE EXIT SIGNAGE PER CODE REQUIREMENTS. REFER TO DETAIL 1A ON THIS SHEET FOR TACTILE SIGN LOCATION.
101	STAGING	D	3'-0" x 7'-0" x 1 3/4"	WOOD	H.M.	SEE DOOR TYPE	101	1,2,8,11,13,14,15	
102	RECEIVING	E	EXISTING TO REMAIN	EXISTING	EXISTING	SEE DOOR TYPE	102	1,2,3,5,6,9,10,12,13,14	
103	OFFICE	D	3'-0" x 7'-0" x 1 3/4"	WOOD	H.M.	SEE DOOR TYPE	103	1,2,8,11,13,14	
104	EXTERIOR EXIT	F	EXISTING TO REMAIN	EXISTING	EXISTING	SEE DOOR TYPE	104	1,2,3,5,6,9,10,12,13,14	
105	WASHER DRYER	G	(4) 1'-0" x 7'-0" x 1 3/4"	WOOD	H.M.	SEE DOOR TYPE	105	1,2,13,14	
106	COAT CLOSET	C	(2) 1'-6" x 7'-0" x 1 3/4"	WOOD	H.M.	SEE DOOR TYPE	106	1,2,13	
107	WOMEN'S TOILET	B	3'-0" x 7'-0" x 1 3/4"	WOOD	H.M.	SEE DOOR TYPE	107	1,2,8,11,13,14,17	
108	MEN'S TOILET	B	3'-0" x 7'-0" x 1 3/4"	WOOD	H.M.	SEE DOOR TYPE	108	1,2,8,11,13,14,17	

4 DOOR SCHEDULE SCALE NONE

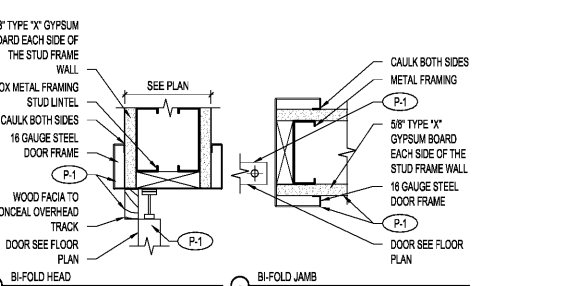
104-EXTERIOR EXIT

*EXISTING DOOR. G.C. TO ENSURE IT IS IN GOOD WORKING ORDER

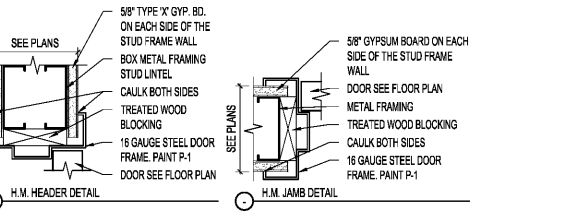
ITEM	QUANTITY	FINISH	MANUFACTURER	MODEL #
BUTTS	EXIST.	S.S.	-	4 1/2" X 4 1/2" HEAVY DUTY
THRESHOLD	1	-	-	IN COMPLIANCE WITH ANSI CABO 117.4A.13B
CLOSER	EXIST.	-	-	HEAVY DUTY SPEC WITH THRU BOLTS, 1808 STRIKE
KICKPLATE	1	S.S.	ROCKWOOD	K1050, 10" HIGH X 40" WIDE - PUSH SIDE
WEATHER STRIPING	1 SET	-	-	GASKETS AND SILL SWEEPS
PANIC DEVICE	-	-	LOCKNET	SECURITECH TROJENT LOCKNET CONTACT, JEFF CARROLL 800.887.4307 X239

105-WASHER DRYER

ITEM	QUANTITY	FINISH	MANUFACTURER	MODEL #
TRACK	1	-	JOHNSON	100
TOP PIVOT SET	2	-	JOHNSON	107
DOOR HANGER	2	-	JOHNSON	1125
TRACK STOP	2	-	JOHNSON	1155
PANEL HINGE	3 PR.	-	JOHNSON	1703
BOTTOM PIVOT	2	-	JOHNSON	1706
BOTTOM PIVOT BRACKET	2	-	JOHNSON	1011
DOOR ALIGNER	1	-	JOHNSON	1808
DOOR KNOB	2	-	JOHNSON	33



1 BI-FOLD DOOR DETAIL SCALE 3/4"=1'-0"



2 DOOR TYPES SCALE 1/4"=1'-0"

1 DOOR DETAIL SCALE 3/4"=1'-0"

WWW.LDILLIANS.COM