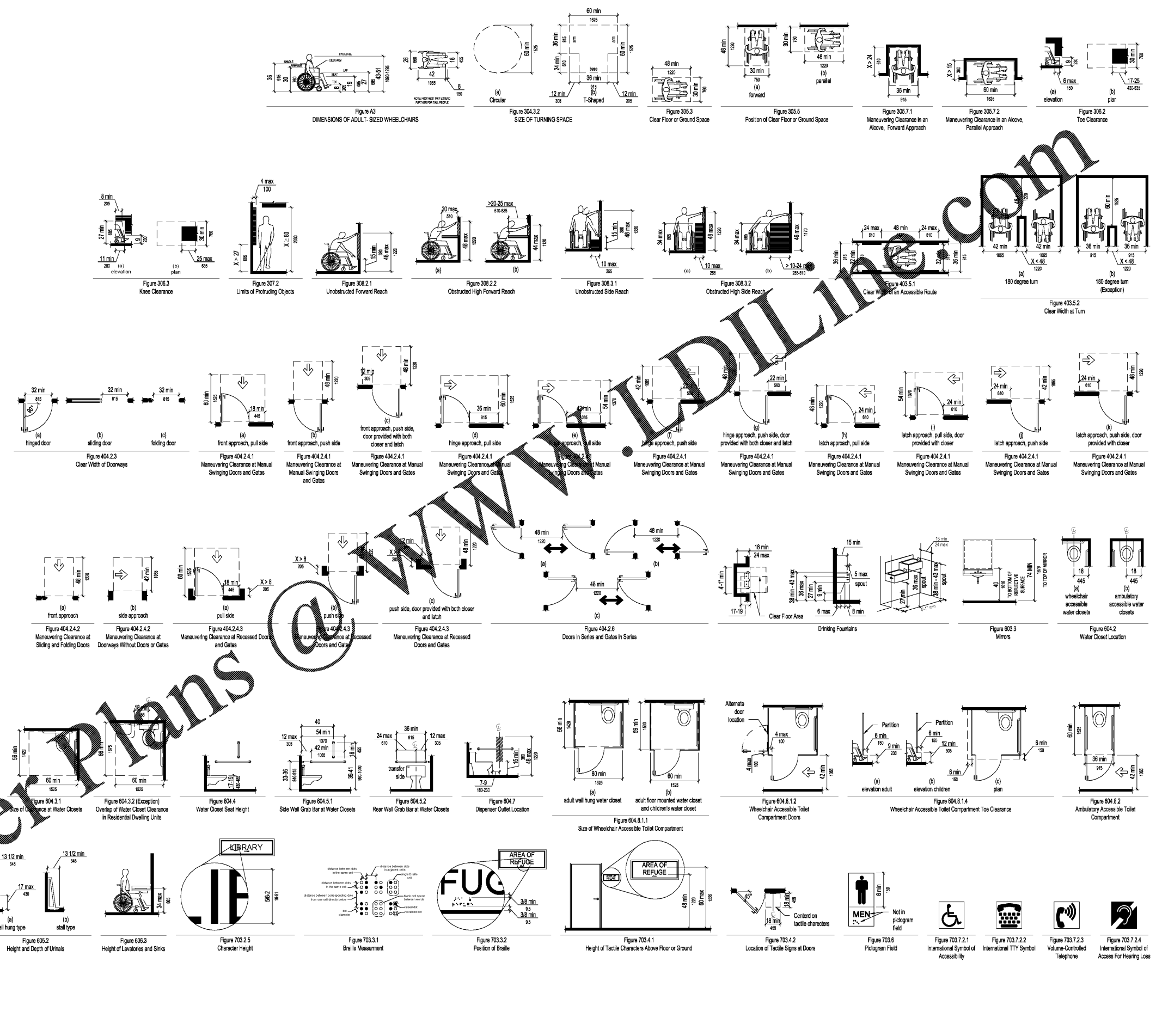


| Convention | Description |
|------------|---|
| | dimension showing English units (in inches unless otherwise specified) above the line and SI units (in millimeters unless otherwise specified) below the line |
| | dimension for small measurements |
| | dimension showing a range with minimum - maximum |
| | minimum |
| | maximum |
| | greater than |
| | greater than or equal to |
| | less than or equal to |
| | less than |
| | boundary of clear floor space or maneuvering clearance |
| | centerline |
| | a permitted element or its extension |
| | direction of travel or approach |
| | a wall, floor, ceiling or other element cut in section or plan |
| | a highlighted element in elevation or plan |
| | location zone of element, control or feature |

Figure 104
Graphic Convention for Figures



RGLA
rgla solutions, inc.
5100 River Road, Ste 125
Schiller Park, IL 60176
P 847.671.4428
F 847.671.4200
www.rgla.com

| REVISIONS | DATE |
|------------------|------------|
| LL & ULTA REVIEW | 09/03/2019 |
| SD ISSUE | 09/03/2019 |
| PERMIT ISSUE | 09/04/2019 |

robert g. lyon + associates, inc.
1111 S. W. 11th St., Suite 110
5100 River Road, Ste 125
Schiller Park, IL 60176
P 847.671.4428
F 847.671.4200
www.rgla.com

SCALE:
THE ABOVE DRAWINGS AND SPECIFICATIONS REPRESENT THE DESIGN AND SPECIFICATIONS APPROXIMATED THEREBY AND ARE SUBJECT TO CHANGE WITHOUT NOTICE. THE USER SHALL BE RESPONSIBLE FOR VERIFYING THE ACCURACY OF THE INFORMATION PROVIDED HEREIN. VISUAL CONTACT WITH THESE DRAWINGS OR SPECIFICATIONS SHALL CONSTITUTE CONCLUSIVE EVIDENCE OF ACCEPTANCE OF THESE REPRESENTATIONS.
WRITTEN DIMENSIONS ON THESE DRAWINGS SHALL PREVAIL OVER DIMENSIONS INDICATED THEREON. CONTRACTORS SHALL VERIFY AND BE RESPONSIBLE FOR ALL DIMENSIONS AND CONDITIONS ON THE JOB. THE OFFICE SHALL BE NOTIFIED OF ANY DISCREPANCIES IMMEDIATELY. THE DIMENSIONS AND CONDITIONS SHOWN BY THESE DRAWINGS AND SPECIFICATIONS SHALL BE SUBJECT TO THE APPROVAL OF THE LOCAL BUILDING DEPARTMENT WITH APPROVAL.

ULTA BEAUTY
ULTA #1813
SHOPPES OF MADISON
8201 HIGHWAY 72 WEST
SUITE C
MADISON, AL 35758

DISABLED ACCESS DETAILS

| | |
|-------------|-------|
| DESIGNED BY | IA |
| CHECKED BY | PK |
| JOB NUMBER | 19047 |
| SHEET NAME | HC1.1 |