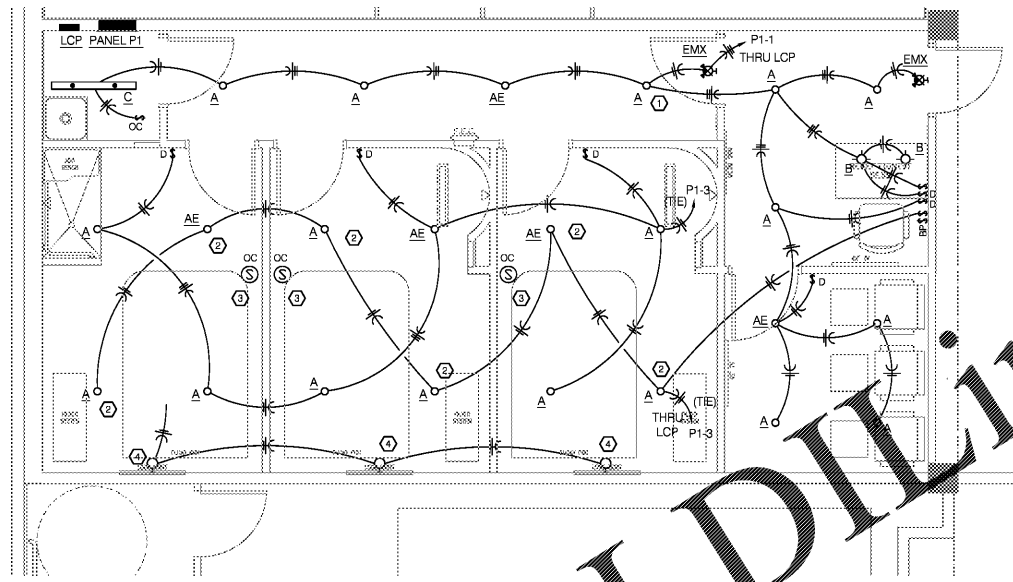
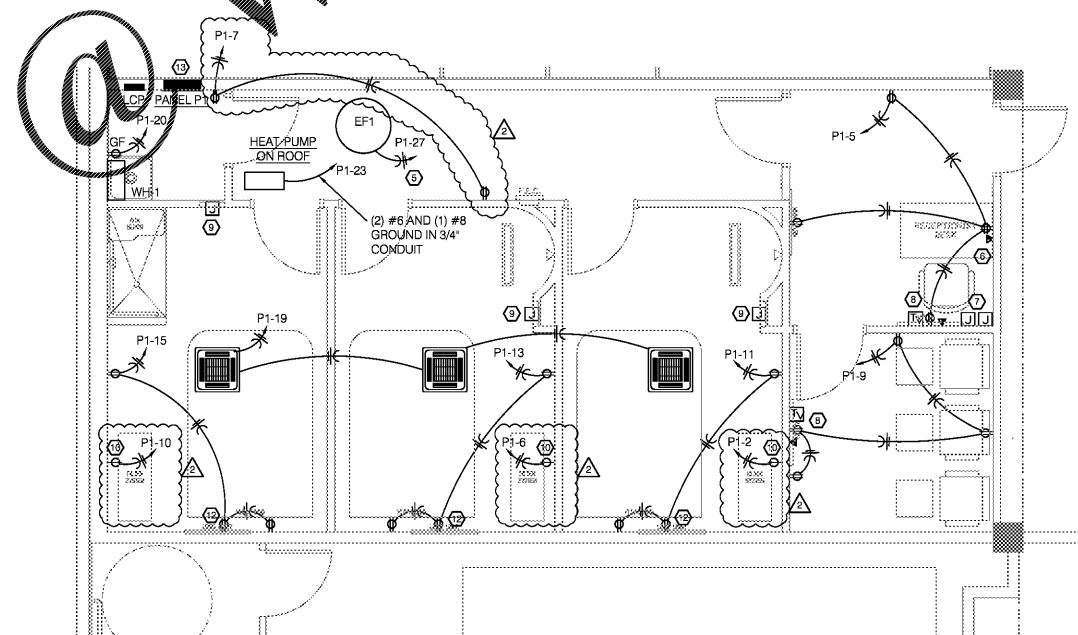


Order Plans



2 LIGHTING PLAN  
E1.1 Scale: 1/4" = 1'-0"



1 POWER PLAN  
E1.1 Scale: 1/4" = 1'-0"

ELECTRICAL KEYNOTES:

- CONTROL HALLWAY LIGHTING VIA SWITCH AT LOBBY DESK.
- CLEANING LIGHTING CONTROLLED VIA SWITCH AT LOBBY DESK.
- PROVIDE WET-TESTED OCCUPANCY SENSOR TO CONTROL DIMMABLE SWITCHED FIXTURES IN THIS ROOM. COORDINATE SENSOR AND DIMMING REQUIREMENTS WITH FIXTURES.
- 120-VOLT CONNECTION FOR LOGO LIGHTING PROVIDED BY OTHERS. VERIFY REQUIREMENTS WITH OWNER.
- PROVIDE RELAY CONTACTOR TO INTERLOCK EXHAUST FAN WITH LOBBY AND HALL LIGHTING SO FAN OPERATES WHEN LOBBY LIGHTS ARE ON.
- COORDINATE POWER AND DATA WITH MILLWORK.
- PROVIDE JUNCTION BOX AND EMPTY CONDUIT UP TO ACCESSIBLE CEILING SPACE FOR INTERCOM AND MUSIC SYSTEMS.
- PROVIDE LEVITON 690 RECESSED RECEPTACLE AT THIS LOCATION FOR TV. VERIFY EXACT REQUIREMENT OF DEVICES WITH OWNER AND COORDINATE TO CONCEAL ALL DEVICES.
- PROVIDE JUNCTION BOX WITH CONDUIT TO ACCESSIBLE CEILING SPACE FOR PHONE DOCKING STATION.
- PROVIDE 20 AMP RECEPTACLE AT 30" A.F.F. VERIFY ALL REQUIREMENTS WITH OWNER. VERIFY RECEPTACLE TYPE WITH OWNER AND EQUIPMENT.
- NOT USED.
- PROVIDE FOR LED COVE LIGHTING AT PHOTO ROOM STORAGE. REFER TO ARCHITECTURAL PLANS FOR LOCATION AND REQUIREMENTS.
- PROVIDE NEW 200 AMP, 3-PHASE, 4-WIRE SERVICE TO BE RERUN BACK TO EXISTING 120/208 DISTRIBUTION PANEL IN ELECTRICAL ROOM WITH (4) #3/0 AND (1) #8 GROUND IN 2" CONDUIT AND PROVIDE NEW 200 A, 3-POLE BREAKER. VERIFY EXISTING LOAD IN PANEL AND ENSURE NEW WAD'S LOAD DOES NOT EXCEED RATINGS OF EXISTING PANEL OR ASSOCIATED EQUIPMENT.
- PROVIDE 400 VOLT RELAY LIGHTING CONTROL PANEL WITH INTEGRAL 30S DAY, MULTI-CHANNEL TIME SWITCH WITH INTEGRAL 30S POWER CIRCUIT LOBBY LIGHTING THROUGH RELAY #1 AND PHOTO ROOM LIGHTING THROUGH RELAY #2. RELAYS #3 AND #4 SHALL BE SPARE. PROVIDE 30VOLT 12-HOUR BYPASS SWITCH 18" IN LOBBY. PROVIDE DEDICATED CIRCUIT "P1-24" FROM OWNER TO LIGHTING CONTROL PANEL.

GENERAL ELECTRICAL NOTES:

- UNLESS NOTED OTHERWISE, ALL DUPLEX RECEPTACLES SHALL BE AT 18" A.F.F. TO CENTER OF DEVICE.
- LOCATIONS AND FINISHES OF ALL ELECTRICAL DEVICES SHALL BE FIELD APPROVED BY OWNER PRIOR TO FINAL INSTALLATION AND ROUGH-IN.

ELECTRICAL SYMBOLS:

- ⊕ SIMPLEX RECEPTACLE; 2P, 3W, 20A, 125V
  - ⊕-14-30 SIMPLEX RECEPTACLE; NEMA CONFIGURATION AS INDICATED
  - ⊕-42 DUPLEX RECEPTACLE; 2P, 3W, 20A, 125V
  - ⊕-42 DUPLEX RECEPTACLE; MOUNTED @ 42" ABOVE FINISHED FLOOR
  - ⊕-CLG DUPLEX RECEPTACLE; INSTALLED FLUSH WITH CEILING
  - ⊕-AC DUPLEX RECEPTACLE; MOUNTED 6" ABOVE COUNTERTOP BACKSPASH
  - ⊕-GF DUPLEX RECEPTACLE W/ GROUND FAULT INTERRUPTER
  - ⊕-SW DUPLEX RECEPTACLE, SWITCHED
  - ⊕-TR DUPLEX RECEPTACLE, TAMPER RESISTANT
  - ⊕-WP DUPLEX RECEPTACLE, WEATHERPROOF WHILE IN USE
  - ⊕-DBL DOUBLE DUPLEX RECEPTACLE WITH COMMON FACEPLATE
  - ⊕-FLR DATA/POWER RECEPTACLE IN FLUSH FLOOR BOX. REFER TO SPECIFICATIONS
  - ⊕-JUN CEILING MOUNTED JUNCTION BOX
  - ⊕-JUN WALL MOUNTED JUNCTION BOX
  - PP1 LIGHTING & POWER PANELBOARD
  - MDPT ELECTRICAL EQUIPMENT. SEE SCHEDULED FOR TAGGED EQUIPMENT
  - DS1 DISCONNECT SWITCH
  - CONDUIT CONCEALED IN CEILING OR WALL
  - CONDUIT CONCEALED IN FLOOR SLAB
  - CONDUIT ROUTED EXPOSED AT STRUCTURE
  - #12 CONDUCTORS. TICK MARKS INDICATE QUANTITY
  - PP1-1 HOME RUN WITH PANEL AND CIRCUIT DESIGNATION
  - PP1-1 PARTIAL HOME RUN WITH PANEL AND CIRCUIT DESIGNATION
  - GROUND WIRE
  - FEEDER PER SCHEDULE
  - \* CABLE TELEVISION OR MATV OUTLET
  - \* TELECOMMUNICATIONS OUTLET INSTALLED IN FLUSH FLOOR BOX
- \* THESE DEVICES REQUIRE 4" SQUARE JUNCTION BOX WITH 1" CONDUIT TO NEAREST ACCESSIBLE CEILING SPACE. WHERE APPLICABLE, INSTALL CONDUIT TO NEAR CABLE TRAY. PROVIDE PULL STRING AND INSULATING BUSHING UNLESS INDICATED OTHERWISE IN PLANS OR SPECIFICATIONS

LIGHTING FIXTURE SYMBOLS:

- EXIT LIGHT; WALL MOUNTED / CEILING MOUNTED
- EMERGENCY LIGHT
- EXIT/EMERGENCY LIGHT
- REMOTE EMERGENCY LIGHT
- FLUORESCENT LIGHT FIXTURE
- RECESSED CAN LIGHT FIXTURE
- UNSWITCHED 'NIGHT LIGHT' FIXTURE
- 20 AMP, SINGLE POLE, 120V SWITCH
- 20 AMP, THREE-WAY, 120V SWITCH
- 20 AMP, FOUR-WAY, 120V SWITCH
- 20 AMP DIMMER SWITCH COMPATIBLE WITH LED FIXTURE DIMMING AS APPLICABLE
- WATTSTOPPER DW-100 DUAL TECHNOLOGY WALL SWITCH
- WATTSTOPPER RT-50 ELECTRONIC TIMER SWITCH

**GODWIN + ASSOCIATES**  
architects & engineers

1200 East Woodlawn, D-100 • Springfield • Missouri 65804 • (417) 897-2667 • Fax: (417) 897-3215

Professional Seal

Professional Seal

GEORGIA REGISTERED PROFESSIONAL ENGINEER  
No. PE 044650  
NATHAN S. RILEY

*Nathan S. Riley*  
Digitally signed by Nathan S. Riley  
DN: cn=Nathan S. Riley, o=NSR, ou=NSR, email=nsr@nsr.com

NATHAN S. RILEY, ENGINEER  
THIS SEAL IS FOR ENGINEERING INFORMATION ONLY

Revisions

⊕	02/10/19 - REVISION #1
⊕	06/27/19 - REVISION #2

SPECIAL NOTICE:  
In the event the client consents to, allows, authorizes or approves of changes to any plans, specifications or other construction documents, and these changes are not approved in writing by the design professional, the client recognizes that such changes and the results thereof are not the responsibility of the design professional. Therefore, the client agrees to release the design professional from any liability arising from the construction, use or result of such changes. In addition, the client agrees to the fullest extent permitted by law, to indemnify and hold the design professional harmless from any damage, liability or cost (including reasonable attorney's fees and costs of defense) arising from such changes.

Copyright © 2018 by GODWIN + ASSOCIATES. All rights reserved. No part of this drawing may be reproduced by photocopying or by other means, or stored, processed, or transmitted in or by any computer or other system without the prior written permission of GODWIN + ASSOCIATES.

Project Number: 49034  
Drawn By: NSR  
Reviewed By: NSR  
Date: 04.10.19

**True Rest Float Spa**  
2995 Cobb Parkway Southeast  
Cobb County, GA 30339

**ELECTRICAL PLANS**

**CONSTRUCTION DOCUMENTS**

Sheet Number  
**E1.1**