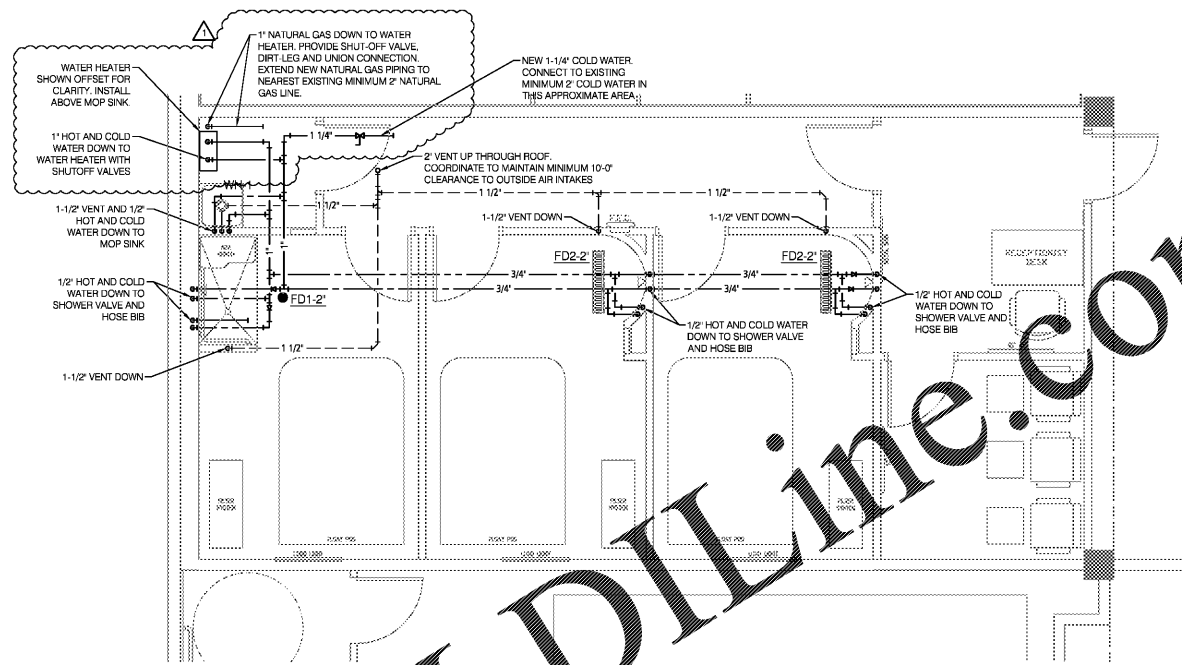
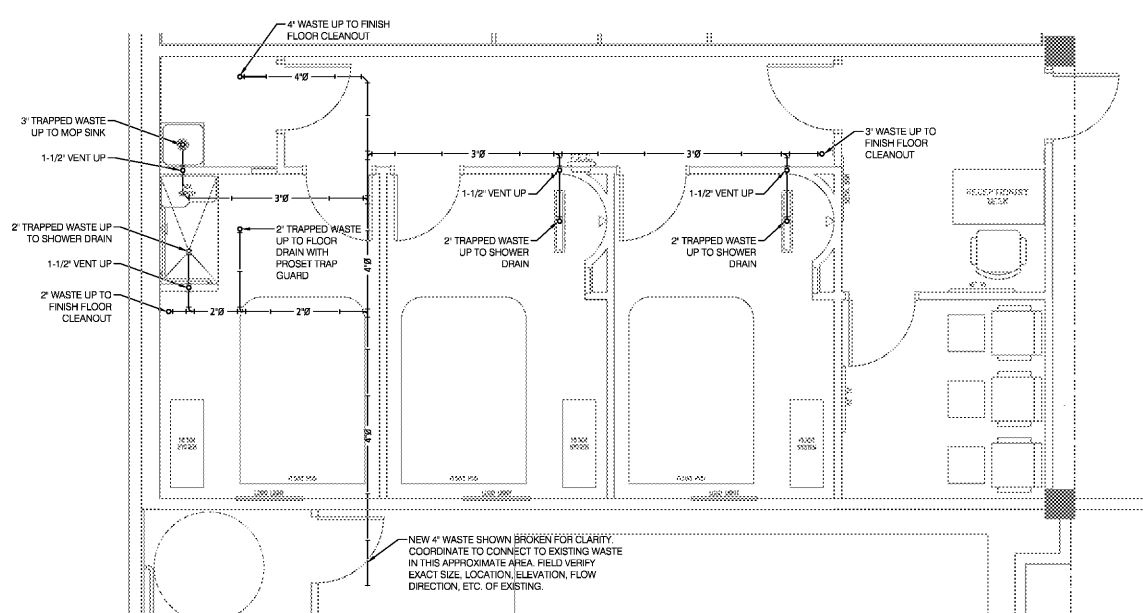


Order Plans @

WWW.IDIline.com



2 PLUMBING PLAN
P1.1 Scale: 1/4" = 1'-0"



1 UNDERGROUND PLUMBING PLAN
P1.1 Scale: 1/4" = 1'-0"

GODWIN + ASSOCIATES
architects & engineers

1200 East Woodlawn, D-100 • Springfield • Missouri 65804 • (417) 887-2667 • Fax: (417) 887-3215

Professional Seal

Professional Seal



Digitally signed by Nathan S. Riley
Date: 2019.06.10 12:23:10 -0500

NATHAN S. RILEY ENGINEER
SA # PE 044450
THIS SEAL IS FOR ENGINEERING INFORMATION ONLY

Revisions

| Symbol | Description |
|--------|------------------------|
| ▲ | 02/10/19 - REVISION #1 |

SPECIAL NOTICE:
In the event the client consents to, allows, authorizes or approves changes to any plans, specifications or other construction documents, and these changes are not approved in writing by the design professional, the client recognizes that such changes and the results thereof are not the responsibility of the design professional. Therefore, the client agrees to release the design professional from any liability arising from the construction, use or result of such changes. In addition, the client agrees to the fullest extent permitted by law, to indemnify and hold the design professional harmless from any damage, liability or cost (including reasonable attorney's fees and costs of defense) arising from such changes.

Copyright © 2018 by GODWIN + ASSOCIATES. All rights reserved. No part of this drawing may be reproduced by photocopying or by any other means, or stored, processed, or transmitted in or by any computer or other systems without the prior written permission of GODWIN + ASSOCIATES.

Project Number: 49034
Drawn By: NSR
Reviewed By: NSR
Date: 04.10.19

True Rest Float Spa
2995 Cobb Parkway Southeast
Cobb County, GA 30339

PLUMBING PLANS