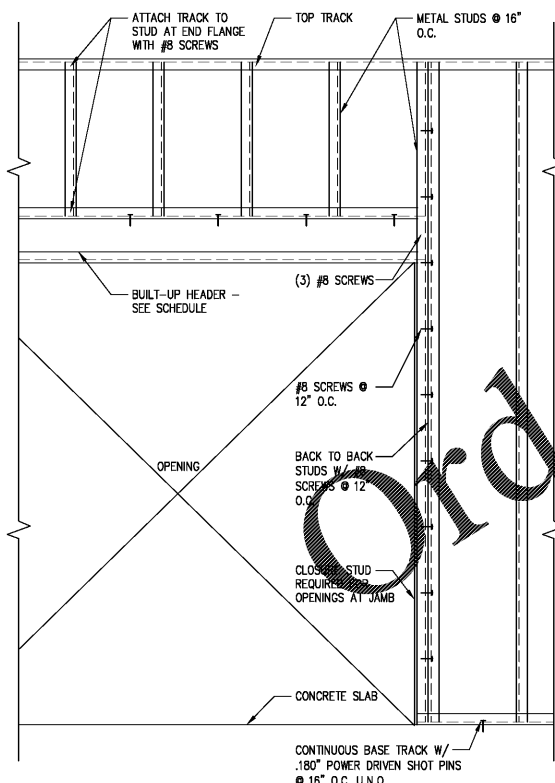
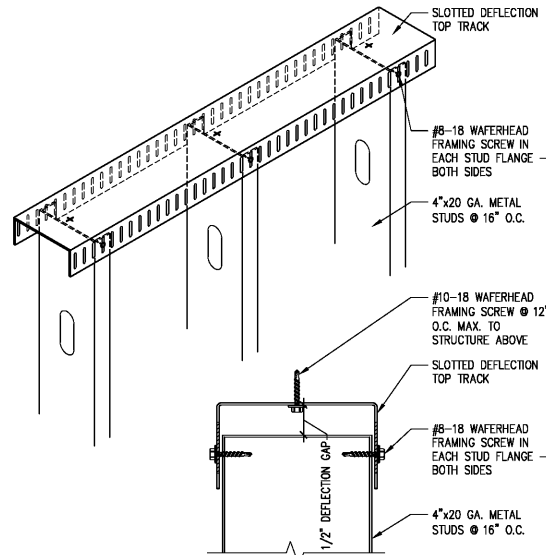


3A Wall Framing Detail @ Window Opening
Scale: 3/4"=1'-0"

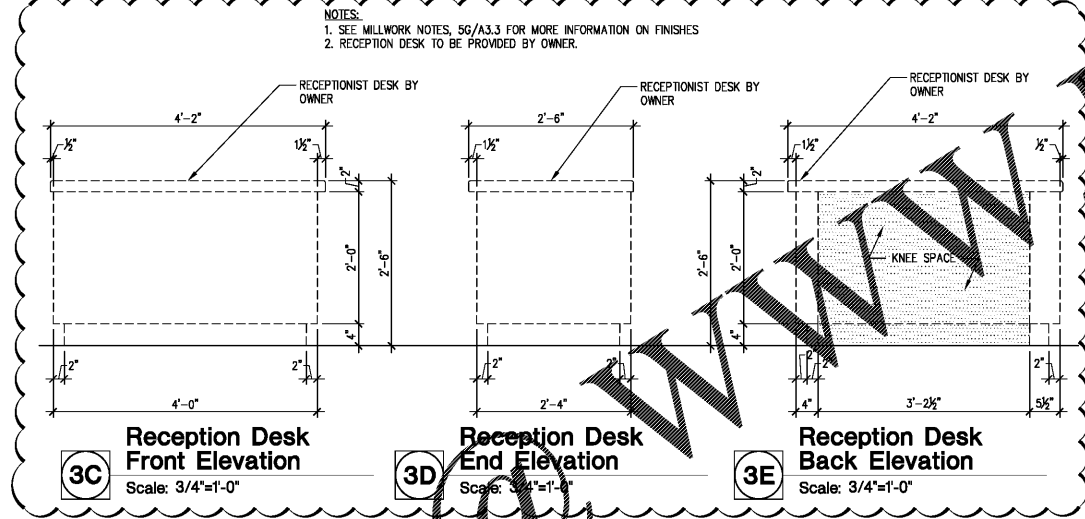


1A Wall Framing Detail @ Door Opening
Scale: 3/4"=1'-0"

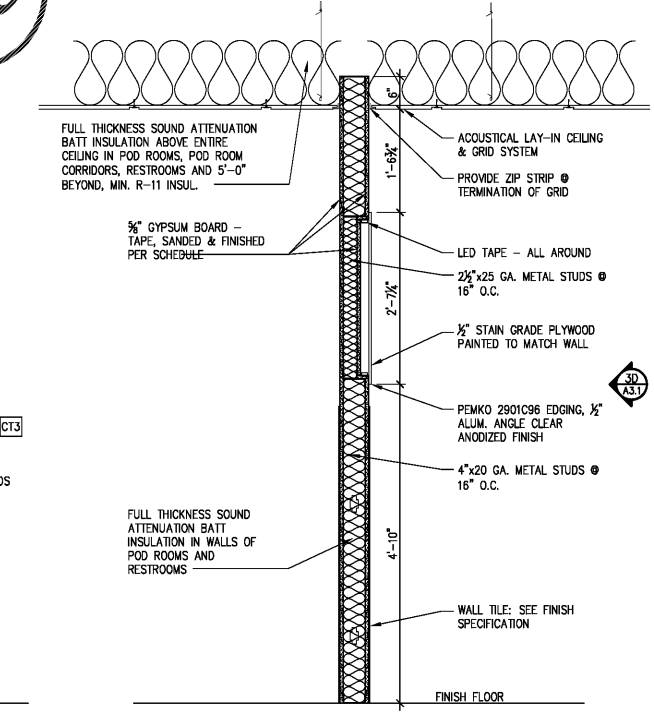


4C Slip Top Track / Metal Stud Detail
Scale: N.T.S.

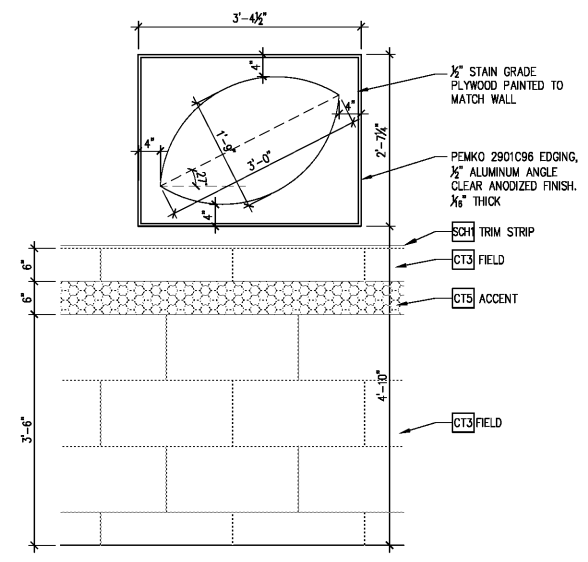
METAL STUD HEADER SCHEDULE		
KING STUDS	SPAN	HEADER SIZE
1 / TO MATCH WALL	4'-0"	362 S162-33 INT. 362 S162-43 DEMISING
1 / INT. PARTITION	6'-0"	362 S162-33 INT.
2 / DEMISING WALL	6'-0"	600 S162-43 DEMISING
2 / DEMISING WALL	8'-0"	600 S162-33 INT.
2 / INT. PARTITION	8'-0"	600 S162-43 DEMISING
3	12'-0"	800 S162-33 INT. 800 S162-54 (50 KSI) DEMISING
3	16'-0"	800 S162-54 INT. 800 S162-68 (50 KSI) DEMISING



3C Reception Desk Front Elevation Scale: 3/4"=1'-0"
3D Reception Desk End Elevation Scale: 3/4"=1'-0"
3E Reception Desk Back Elevation Scale: 3/4"=1'-0"



1C Section @ Music Niche Scale: 3/4"=1'-0"
1D Section @ Logo Light Scale: 3/4"=1'-0"



1F Detail @ Logo Light Scale: 3/4"=1'-0"

GENERAL NOTES FOR PARTITIONS

PLAN CHECK NOTES:
1. INSULATION SHALL BE PROVIDED IN ALL NEW WALLS FROM FLOOR TO STRUCTURE ABOVE.
2. OPENINGS IN FIRE WALLS SHALL COMPLY WITH SECTION 705.8

INTERIOR PARTITIONS (NON-LOAD BEARING)
1. REFER TO FLOOR PLAN FOR WALL TYPES
2. ALL METAL STUDS SHALL BE S125 & S137 TYPE OF APPROVED EQUAL.
3. THE BRIDGING, BLOCKING OR END BEARING STIFFENERS SHALL BE AS REQUIRED BY THE MANUFACTURER UNLESS NOTED OTHERWISE ON THE DRAWINGS.
4. ALL THE STUDS SHALL CONFORM TO 2007 ANS.
5. TOP TRACK SIZE WILL BE MINIMUM 33 MIL FOR ALL PARTITIONS, U.N.O.
6. REFER TO THE ROOF FINISH SCHEDULE AND RELATED DETAILS FOR FINISHES REQUIRED AND TO THE MANUFACTURER FOR SURFACE PREPARATION REQUIREMENTS.
7. REFER TO THE FLOOR PLAN, INTERIOR ELEVATIONS, DETAILS, MECHANICAL, PLUMBING AND ELECTRICAL PLANS FOR WALL BACKING REQUIREMENTS AND IN-WALL UTILITIES.
8. ALL DOOR OPENINGS UP TO 48" WIDE SHALL HAVE 20 GA. TRACK HEADER AND JAMB STUDS EXTENDED TO STRUCTURE ABOVE.
9. PROVIDE 8" STEEL STUDS AT ALL PLUMBING WALLS AND / OR WALLS WHERE RECESSED ELECTRICAL PANELS ARE LOCATED. COORDINATE WITH RELATED SUB-CONTRACTORS.
10. PROVIDE 4" x 20 GA. STEEL TRACK BACKING AT ALL WALL MOUNTED DOOR STOP.
11. ALL STUDS SUPPORTING WALL HUNG CABINETS SHALL BE MIN. 20 GA. STUDS SPACED AT 16" O.C. MAXIMUM. REFER TO DETAILS FOR REQUIRED BACKING MATERIAL AND CONNECTION.
12. ALL RATED WALLS (FIRE & SMOKE) SHALL BE CONSTRUCTED SO THEY SECONDARY WALLS DO NOT PENETRATE SYSTEM. ALL PENETRATIONS SHALL BE SEALED WITH UL LISTED FIRE STOP SEALANT, U.L. LISTED ASSEMBLIES OR APPROVED EQUAL.
13. SUBMITTAL FOR WALL MATERIALS SHALL BE PROVIDED TO SUBSTANTIATE THAT THE PROPOSED MATERIALS HAVE BEEN TESTED BY A RECOGNIZED TESTING AGENCY TO MEET THE REQUIRED RATINGS AND PERFORMANCE LEVELS OF THE SPECIFIED MATERIALS.
14. REFER TO THE FINISH SCHEDULE FOR ALLOWABLE WALL HEIGHTS. HEIGHTS ARE FOR NON-LOAD BEARING METAL STUDS USED FOR INTERIOR PARTITIONS WITH 5/8" GYPSUM WALLBOARD ON EACH SIDE. REDUCE ALLOWABLE HEIGHTS THOSE LISTED WITHIN TABLE WITHOUT GYPSUM WALLBOARD. BRACE ALL STUDS AS REQUIRED SO AS NOT TO EXCEED THOSE ALLOWABLE HEIGHTS SET BY THE MANUFACTURER.
15. ALL GYPSUM WALLBOARD SHALL BE MOISTURE RESISTANT AT THE FOLLOWING LOCATIONS: (MOISTURE RESISTANT GYP. BD. SHALL NOT BE USED FOR CEILINGS) TOILET ROOMS, JANITOR CLOSETS (WHEN SUPPLIED WITH A MOP SINK) OUTSIDE AIR SHAFTS, PLUMBING SHAFTS, OPEN AIR MECHANICAL ROOMS.
16. REFER TO REFLECTED CEILING PLAN FOR SPECIFIC DRAFT STOP CONDITIONS.
17. CONFIRM LAYOUT OF ALL WALLS WITH ARCHITECT PRIOR TO INSTALLING TRACK.

SIZE	MAX. PARTITION HEIGHT		MAX. PARTITION HEIGHT	
	SPACING	HEIGHT	SPACING	HEIGHT
362 S125-18	16" O.C.	15'-2"	24" O.C.	13'-2"
362 S125-33	16" O.C.	17'-5"	24" O.C.	15'-3"
600 S125-33	16" O.C.	25'-5"	24" O.C.	22'-3"

MILLWORK NOTES

- ALL LENGTHS OF MILLWORK UNITS SHOWN ON MILLWORK ELEVATIONS ARE EXPECTED FINISH DIMENSIONS.
- STUD TO STUD DIMENSIONS ARE SHOWN ON PLANS AND ENLARGED PLANS.
- FIELD VERIFY ALL LENGTHS AVAILABLE FOR MILLWORK UNITS AFTER GYPSUM BOARD IS INSTALLED AND PRIOR TO FABRICATION.
- CABINET DOORS, DRAWER FRONTS AND EXPOSED SURFACES (INTERIOR AND EXTERIOR) SHALL BE 3/4" MELAMINE SURFACED PANELS EQUAL TO 'MELAFACE' OR 'DOMTAR' SURFACED PANELS UNLESS OTHERWISE INDICATED ON CABINET ELEVATIONS.
- CABINET WORK SURFACES, EDGES AND SPLASHES SHALL BE SURFACED WITH PLASTIC LAMINATE (SEE CABINET ELEVATIONS) RADIUS ALL OUTSIDE CABINET WORK SURFACE CORNERS.
- PROVIDE ADJUSTABLE SHELVES THE FULL DEPTH OF ALL CABINETS AS FOLLOWS:
CABINETS UNDER 18" TALL - ONE (1) SHELF
CABINETS 18" TO 25" TALL - ONE (1) SHELF
CABINETS 26" TO 33" TALL - TWO (2) SHELVES
CABINETS 36" TO 48" TALL - TWO (2) SHELVES
- NO SHELVES REQUIRED FOR SINK FRONTERS.
- INSTALL BLOCKING REQUIREMENTS FOR ALL CABINETS, SEATING, ETC.
- FIELD VERIFY ALL CABINET DIMENSIONS PRIOR TO FABRICATION. PAY SPECIAL ATTENTION WHERE EQUIPMENT IS AND NOTIFY ARCHITECT OF DISCREPANCIES PRIOR TO FABRICATION.
- CLEAR KNEE SPACE SHALL BE 25" HIGH UNLESS NOTED OTHERWISE.
- SEMI-EXPOSED SURFACES SHALL BE COVERED WITH LOW PRESSURE LAMINATE 'MELAMINE' UNLESS OTHERWISE NOTED.
- ALL JOINTS AND CONNECTIONS SHALL BE "BISCUITED".
- PROVIDE SEALANT AROUND ALL MILLWORK.
- COUNTERTOP / MILLWORK COLOR OPTIONS:
[C13] WILSONART LAMINATE - STYLE: PREMIUM AEM, COLOR: WAREHOUSE OAK, MODEL# 7959K-12, FINISH: 12 SOFT GRAIN LOCATION: FRONT DESK SHEET SIZES: 4'-8", LEAD TIME - 2 WEEKS, MAX.
[C14] ARIZONA TILE - STYLE: QUARTZITE, COLOR: SEA PEARL, FINISH: POLISHED THICKNESS: 3/8" SLAB INSTRUCTION: SELECT SLAB AT YARD WIDE VARIATION BACKING: MESH SEALER: AZ TILE STIPNE PRESERVE STONE SEALER LOCATION: FRONT DESK LEAD TIME - 2 WEEKS, MAX.
[C15] SALT LAMP BRICKS, HIMALAYAN SALT CRYSTAL DISTRIBUTOR, SEE TRUE REST TEMPLATE
- MILLWORK CABINET PULLS TO BE BRUSHED NICKEL FINISH HW-1; HOUSE OF KNOBS, EUROPEAN BAR PULL, 1/2" DIAMETER, 5.25" OVERALL LENGTH.

GODWIN + ASSOCIATES
architects & engineers

1200 Lake Woodhurst, D-100 • Springfield • Missouri 65804 • (417) 887-9687 • Fax (417) 887-9215

Professional Seal

Professional Seal

Professional Seal

Revisions

NO.	DATE	DESCRIPTION
1.	05.30.19	OWNER REVIEW COMMENTS

SPECIAL NOTICE:
In the event the client consents to, allows, authorizes or approves of changes to any plans, specifications or other construction documents, and these changes are not approved in writing by the design professional, the client recognizes that such changes and the results thereof are not the responsibility of the design professional. Therefore, the client agrees to release the design professional from any liability arising from the construction, use or result of such changes. In addition, the client agrees to the fullest extent permitted by law, to indemnify and hold the design professional harmless from any damage, liability or cost (including reasonable attorney's fees and costs of defense) arising from such changes.

Copyright © 2019 by GODWIN + ASSOCIATES. All rights reserved. No part of this drawing may be reproduced by photocopy or by any other means, or stored, processed, or transmitted in or by any computer or other systems without the prior written permission of GODWIN + ASSOCIATES.

Project Number: 49034
Drawn By: PMM
Reviewed By: JAG
Date: 04.10.19

True Rest Float Spa

2995 Cobb Parkway Southeast
Cobb County, GA 30339

Miscellaneous Sections & Details

CONSTRUCTION DOCUMENTS
Sheet Number **A3.3**