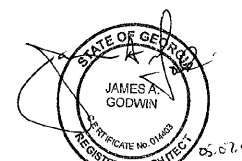


Professional Seal



Professional Seal

Revisions

1. 05.07.19 OWNER REVIEW COMMENTS

SPECIAL NOTICE:
In the event the client consents to, allows, authorizes or approves of changes to any plans, specifications or other construction documents, and these changes are not approved in writing by the design professional, the client recognizes that such changes and the results thereof are not the responsibility of the design professional. Therefore, the client agrees to release the design professional from any liability arising from the construction, use or result of such changes. In addition, the client agrees to the fullest extent permitted by law, to indemnify and hold the design professional harmless from any damage, liability or cost (including reasonable attorney's fees and costs of defense) arising from such changes.

Copyright © 2019 by GODWIN + ASSOCIATES. All rights reserved. No part of this drawing may be reproduced by photocopy or by any other means, or stored, processed, or transmitted in or by any computer or other systems without the prior written permission of GODWIN + ASSOCIATES.

Project Number: 49034

Drawn By: PMM

Reviewed By: JAG

Date: 04.10.19

**True Rest
Float Spa**

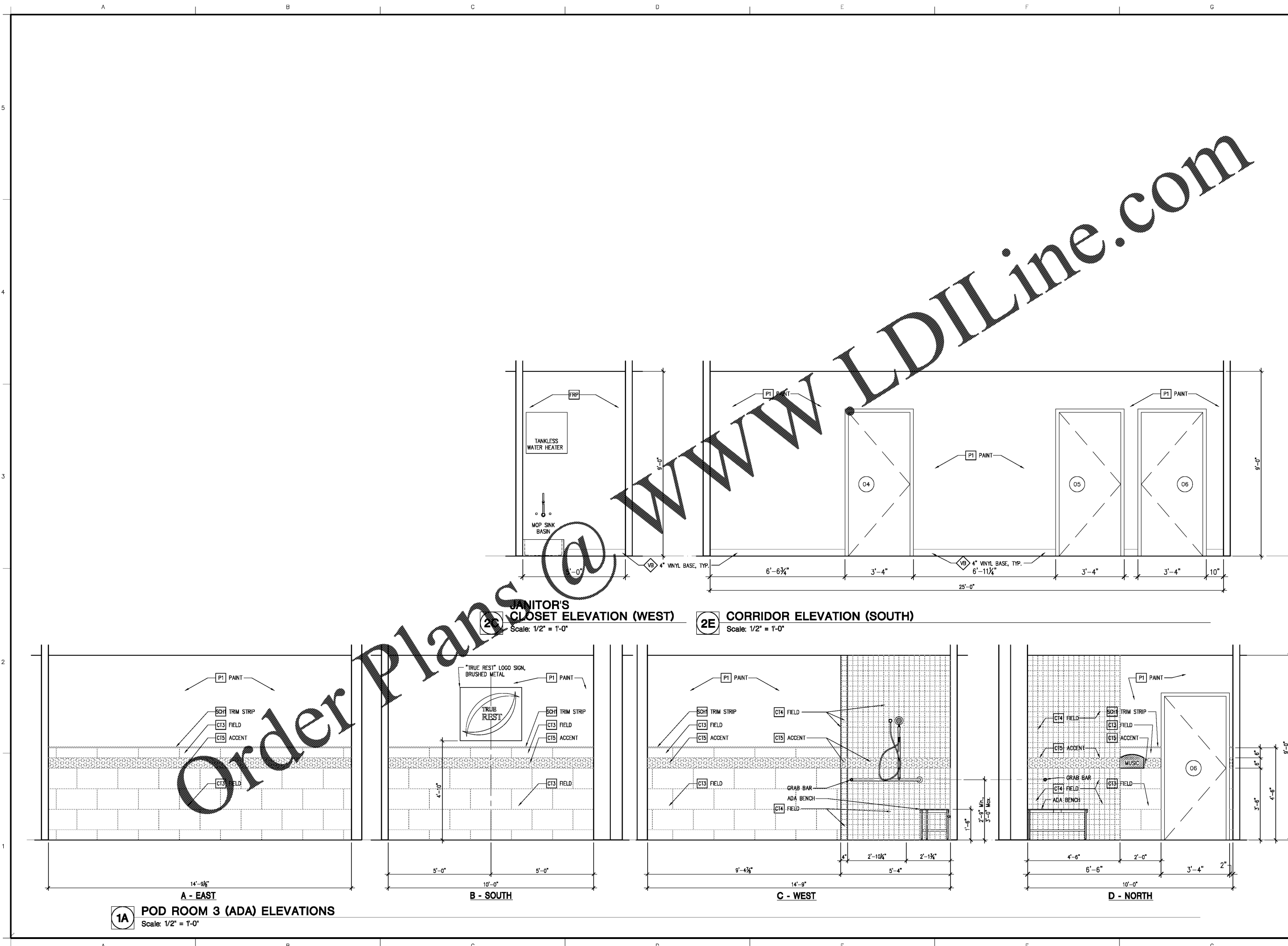
2995 Cobb Parkway Southeast
Cobb County, GA 30339

Interior Elevations

CONSTRUCTION DOCUMENTS

Sheet Number

A3.2



1A POD ROOM 3 (ADA) ELEVATIONS
Scale: 1/2" = 1'-0"

2E CLOSET ELEVATION (WEST)
Scale: 1/2" = 1'-0"

2E CORRIDOR ELEVATION (SOUTH)
Scale: 1/2" = 1'-0"

Order Plans @

WWW.LDILine.com