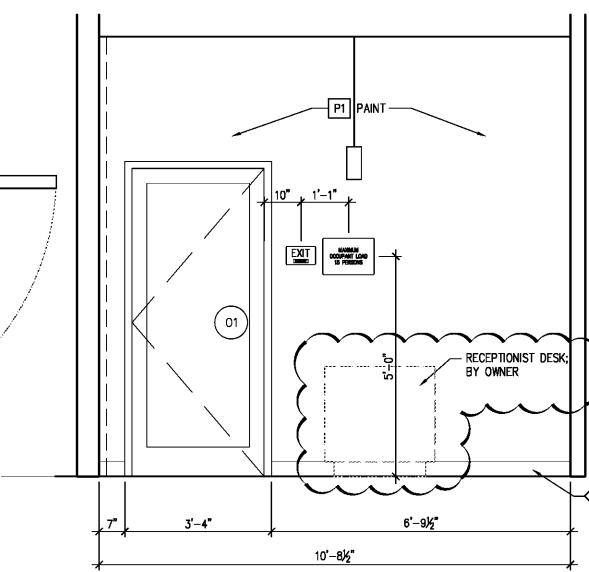
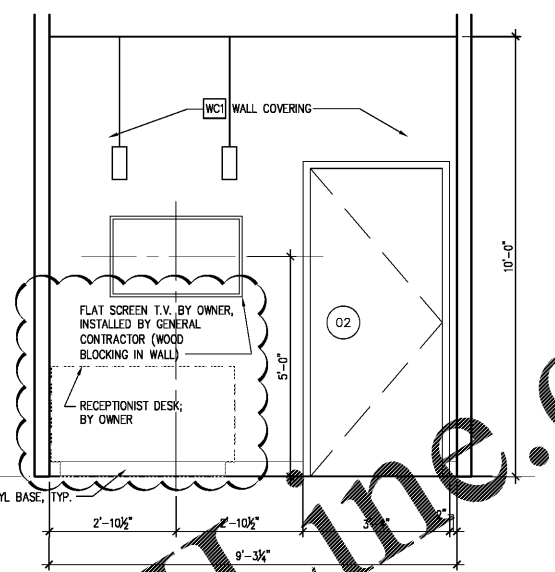


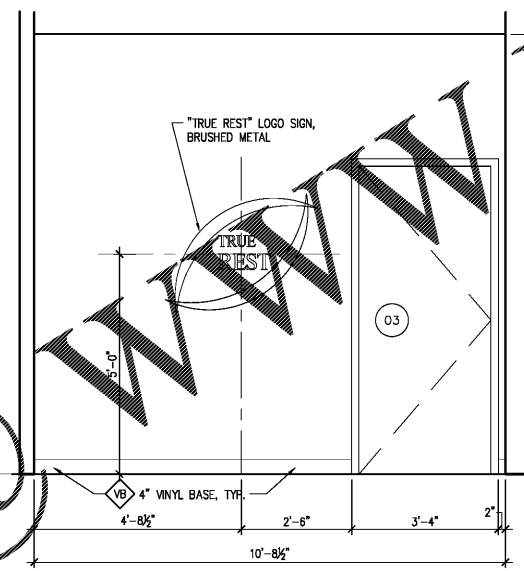
3A ENLARGED PLAN - LOBBY 101
Scale: 1" = 1'-0"



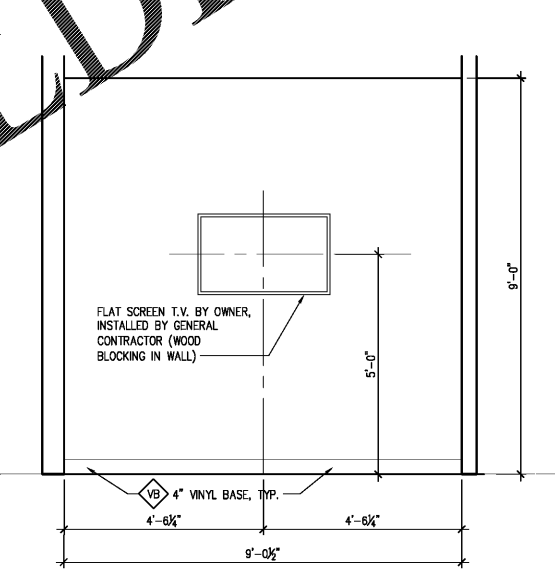
4D LOBBY 101 ELEVATION (EAST)
Scale: 1/2" = 1'-0"



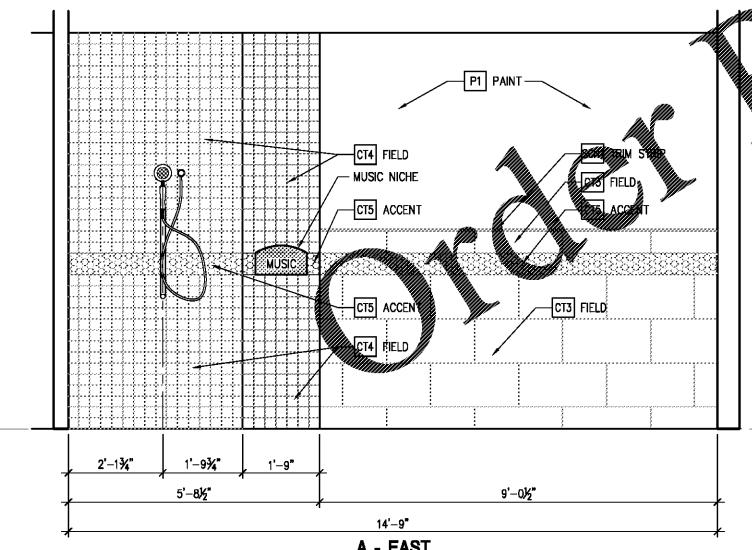
4E LOBBY 101 ELEVATION (SOUTH)
Scale: 1/2" = 1'-0"



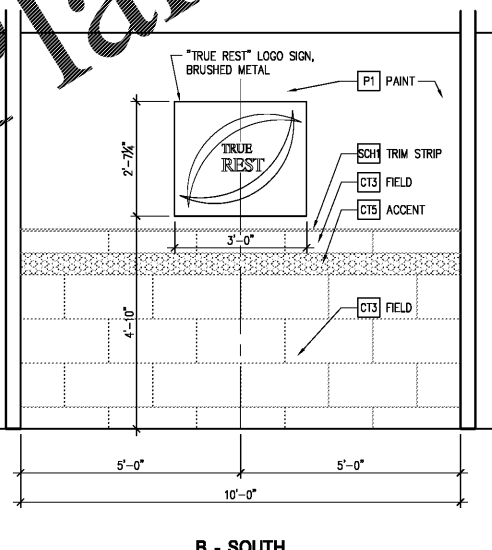
3D LOBBY 101 ELEVATION (WEST)
Scale: 1/2" = 1'-0"



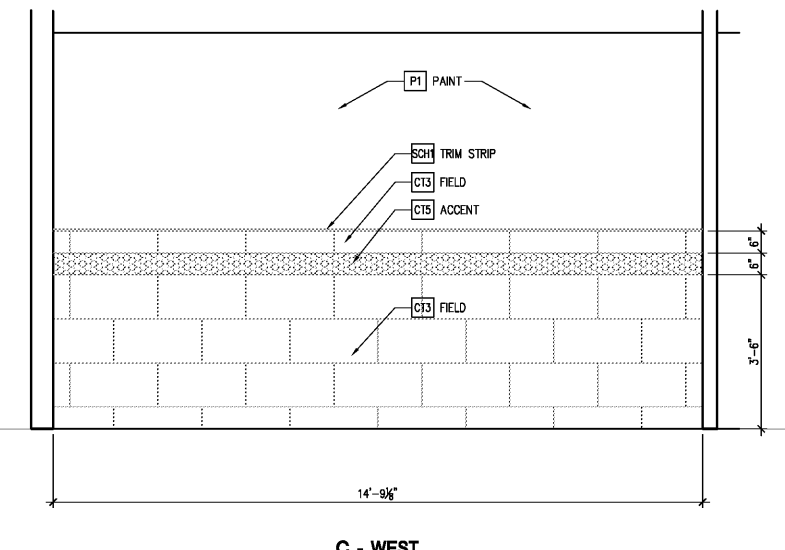
3E VIDEO ROOM 102 ELEVATION (WEST)
Scale: 1/2" = 1'-0"



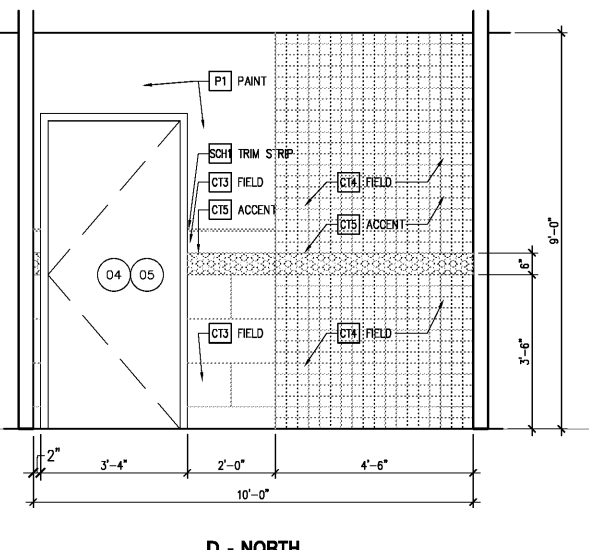
1A POD ROOMS 1 & 2, ROOMS 104 & 105 ELEVATIONS
Scale: 1/2" = 1'-0"



B - SOUTH



C - WEST



D - NORTH

GODWIN + ASSOCIATES
architects & engineers
1200 East Woodhurst, D-100 • Springfield • Missouri 65804 • (417) 887-9687 • Fax (417) 887-3215



Revisions

No.	Date	Comments
1.	05.30.19	OWNER REVIEW COMMENTS

SPECIAL NOTICE:
In the event the client consents to, allows, authorizes or approves of changes to any plans, specifications or other construction documents, and these changes are not approved in writing by the design professional, the client recognizes that such changes and the results thereof are not the responsibility of the design professional. Therefore, the client agrees to release the design professional from any liability arising from the construction, use or result of such changes. In addition, the client agrees to the fullest extent permitted by law, to indemnify and hold the design professional harmless from any damage, liability or cost (including reasonable attorney's fees and costs of defense) arising from such changes.

Copyright © 2019 by GODWIN + ASSOCIATES. All rights reserved. No part of this drawing may be reproduced by photocopy or by any other means, or stored, processed, or transmitted in or by any computer or other systems without the prior written permission of GODWIN + ASSOCIATES.

Project Number: 49034
Drawn By: PMM
Reviewed By: JAG
Date: 04.10.19

True Rest Float Spa
2995 Cobb Parkway Southeast
Cobb County, GA 30339
Enlarged Plan, Interior Elevations,

CONSTRUCTION DOCUMENTS
Sheet Number
A3.1