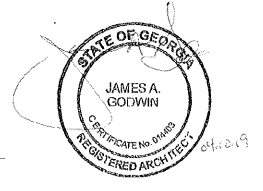


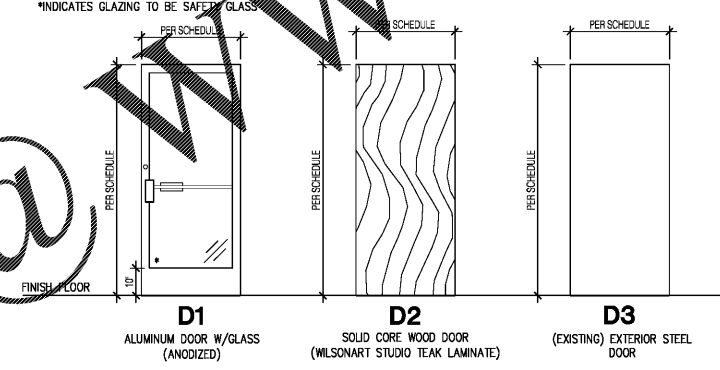
Professional Seal



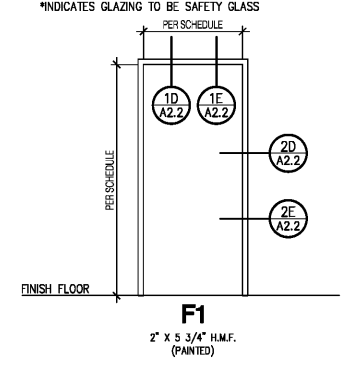
Professional Seal

| MARK | DOOR | | | | | FRAME MATERIAL | HARDWARE | REMARKS | MARK |
|------|-------------|--------|-----------|--------------|-------|----------------|----------|---------|------|
| | PR. - WIDTH | HEIGHT | THICKNESS | MATERIAL | ELEV. | | | | |
| 01 | 3'-0" | 7'-0" | 1 3/4" | ALUM & GLASS | D2 | ALUM | 1 | --- | 01 |
| 02 | 3'-0" | 7'-0" | 1 3/4" | SCW | D2 | HM | 2 | --- | 02 |
| 03 | 3'-0" | 7'-0" | 1 3/4" | SCW | D2 | HM | 2 | --- | 03 |
| 04 | 3'-0" | 7'-0" | 1 3/4" | SCW | D2 | HM | 3 | --- | 04 |
| 05 | 3'-0" | 7'-0" | 1 3/4" | SCW | D2 | HM | 3 | --- | 05 |
| 06 | 3'-0" | 7'-0" | 1 3/4" | SCW | D2 | HM | 3 | --- | 06 |
| 07 | 3'-0" | 7'-0" | 1 3/4" | SCW | D2 | HM | 2 | --- | 07 |

DOOR ELEVATIONS
*INDICATES GLAZING TO BE SAFETY GLASS

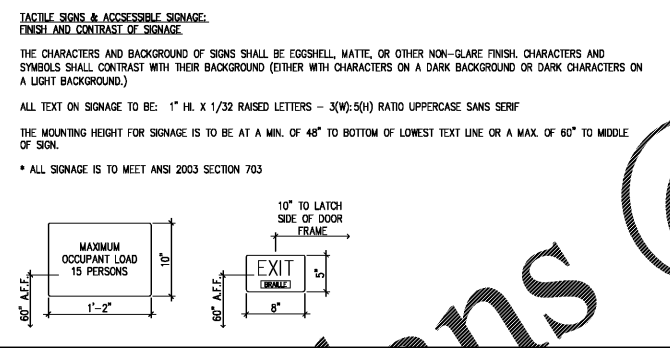


FRAME ELEVATIONS
*INDICATES GLAZING TO BE SAFETY GLASS

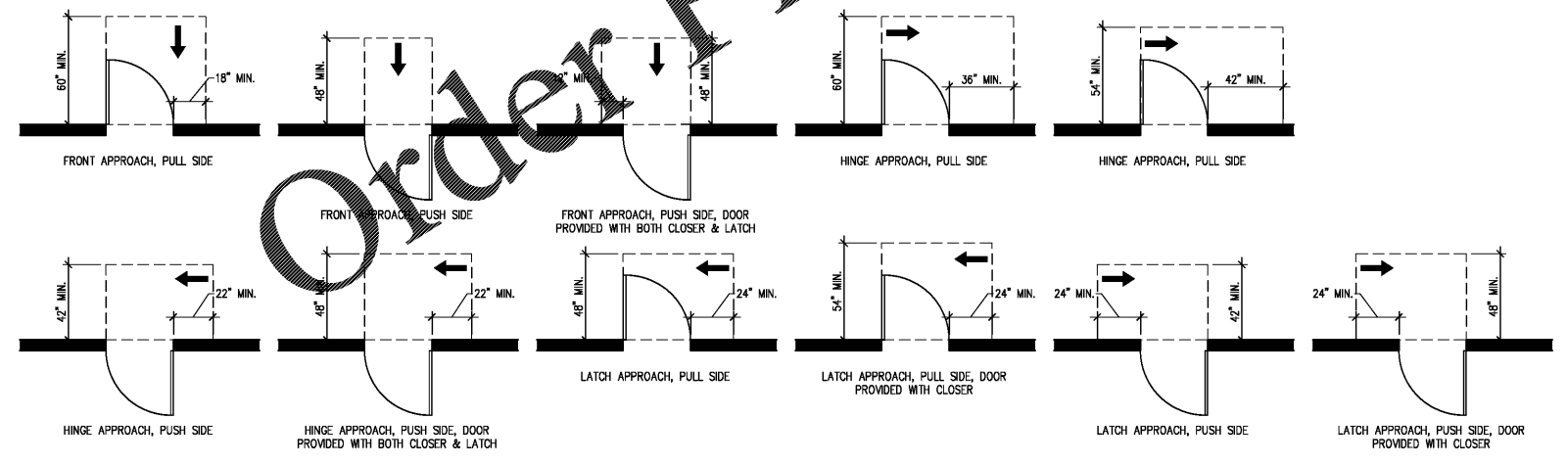


DOOR SCHEDULE NOTES:

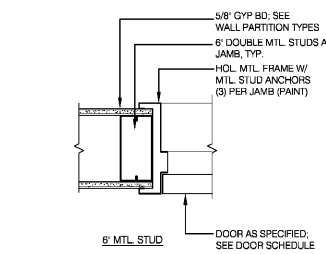
1. THE CONTRACTOR SHALL VERIFY ALL DOOR OPENINGS PRIOR TO FABRICATION OF ANY DOOR OR FRAME.
2. ALL DOOR HARDWARE DUTY, STANDARD TO HEAVY.
3. ALL FRAMES SHALL HAVE A MIN. (3) ANCHORS PER JAMB.
4. ALL HARDWARE SHALL CONFORM WITH ICC ANS1 A117.1 1998 AMERICAN STANDARD CODE AND THE AMERICANS WITH DISABILITIES ACT, WHOEVER IS MORE STRINGENT.
5. HARDWARE SUPPLIER SHALL COORDINATE ALL HARDWARE WITH DOORS AND FRAMES.
6. ALL MASTER KEYING SHALL BE COORDINATED WITH OWNER.
7. HARDWARE MANUFACTURER, AND STYLE TO BE SELECTED BY OWNER. FINISH TO BE BRUSHED NICKEL (TYPICAL).
8. ALL INTERIOR DOORS SHALL BE SCW LAMINATE DOORS - FURNISHED AND INSTALLED BY GENERAL CONTRACTOR. LAMINATE ALL SIDES INCLUDING BOTTOM.
9. ALL WOOD DOORS TO HAVE LAMINATE FINISH OF WILSONART STUDIO TEAK #7960K-18.
10. FURNISH AND INSTALL CAULK ALL AROUND ALL DOOR FRAMES - BOTH SIDES.
11. ALL DOOR FRAMES WITH LABELED DOORS SHALL BE U.L. LISTED.
12. ALL DOORS WITH CLOSERS SHALL PUSH AND PULL WITH 5.0 LBS OF FORCE MAX.
13. LOCKS AT ALUMINUM AND GLASS DOORS SHALL BE AUTOMATICALLY RELEASED WHEN INTERIOR PADDLE IS PUSHED.
14. ALL DOOR FRAMES TO BE TIMELY STEEL KNOCKDOWN FRAMES WITH STANDARD ALUMINUM (SEC 108) FINISH.



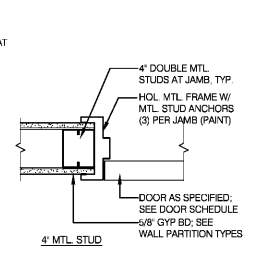
2B Tactile & HC Accessible Signage Details
Scale: 1"=1'-0"



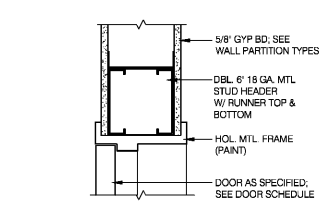
1A Maneuvering Clearances At Manual Swinging Doors
Scale: 1/4"=1'-0"



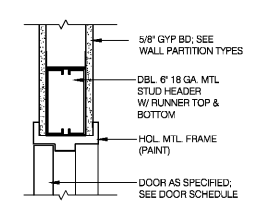
2D Jamb Detail
Scale: 1 1/2"=1'-0"



2E Jamb Detail
Scale: 1 1/2"=1'-0"



1D Head Detail
Scale: 1 1/2"=1'-0"



1E Head Detail
Scale: 1 1/2"=1'-0"

HARDWARE GROUPS

- GROUP #1**
HINGES - NON FERROUS, STANDARD DUTY, BALL BEARING W/ NON-REMOVABLE PIN
PANIC HARDWARE INSIDE/ FREE HANDLE OUTSIDE/KEYED LOCK CLOSER THRESHOLD
- GROUP #2**
HINGES - STANDARD DUTY, BALL BEARING
PASSAGE LATCHSET W/ LEVEL TYPE HANDLES
CLOSER
WALLSTOP
- GROUP #3**
HINGES - STANDARD DUTY, BALL BEARING
PRIVACY LOCKSET W/ LEVER TYPE HANDLES
CLOSER
WALLSTOP
KICK PLATE

Revisions

| NO. | DESCRIPTION |
|-----|-------------|
| | |
| | |
| | |
| | |

SPECIAL NOTICE:
In the event the client consents to, allows, authorizes or approves of changes to any plans, specifications or other construction documents, and these changes are not approved in writing by the design professional, the client recognizes that such changes and the results thereof are not the responsibility of the design professional. Therefore, the client agrees to release the design professional from any liability arising from the construction, use or result of such changes. In addition, the client agrees to the fullest extent permitted by law, to indemnify and hold the design professional harmless from any damage, liability or cost (including reasonable attorney's fees and costs of defense) arising from such changes.

Copyright © 2019 by GODWIN + ASSOCIATES. All rights reserved. No part of this drawing may be reproduced by photocopy or by any other means, or stored, processed, or transmitted in or by any computer or other systems without the prior written permission of GODWIN + ASSOCIATES.

Project Number: 49034
Drawn By: PMM
Reviewed By: JAG
Date: 04.10.19

True Rest Float Spa
2995 Cobb Parkway Southeast
Cobb County, GA 30339

Door Schedule, Door Hardware Groups & Door Details

CONSTRUCTION DOCUMENTS
Sheet Number **A2.2**