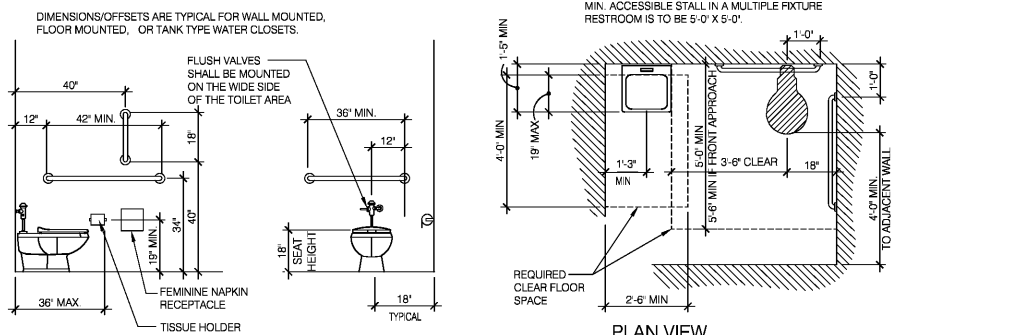


### ACCESSIBLE LAVATORY & MISC. ACCESSORIES

Scale: 3/8" = 1'-0"



### ACCESSIBLE WATER CLOSETS

Scale: 3/8" = 1'-0"

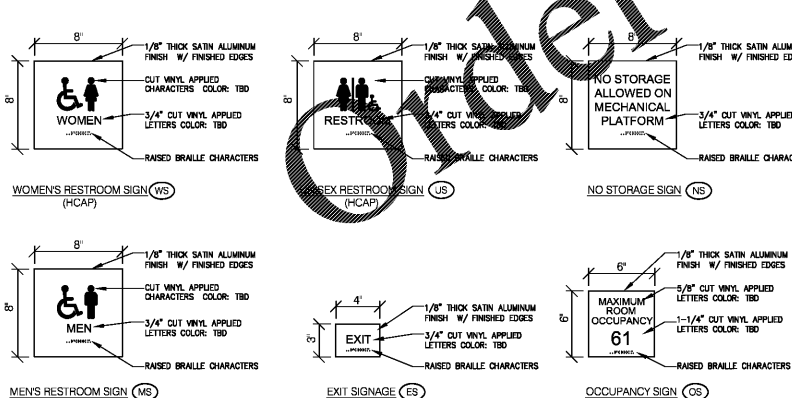
### MISC. ACCESSIBLE MOUNTING HEIGHTS

- FIRE EXTINGUISHERS: 48" TO CENTERLINE OF CONTROLS
- CHALK/MARKER BOARD: 36" TO BOTTOM
- WALL MOUNTED TELEPHONES: 54" TO TOP OF TELEPHONES
- CLOSET/SHELF ROD: 54" TO TOP OF SHELF



### ACCESSIBLE DRINKING FOUNTAIN

Scale: 3/8" = 1'-0"



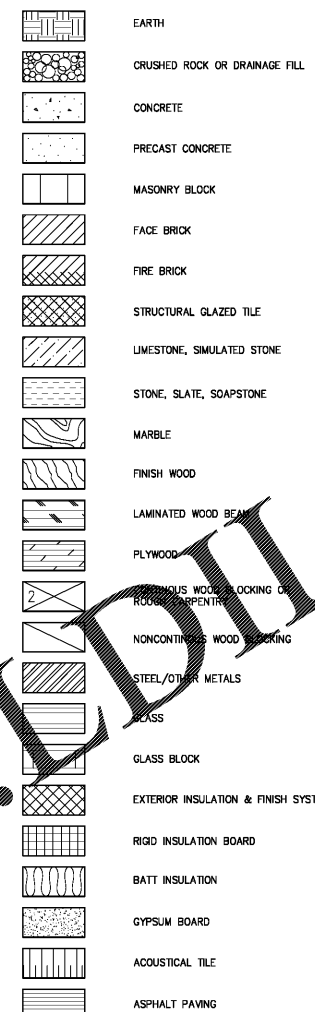
### CODE SIGNAGE

Scale: 1 1/2" = 1'-0"

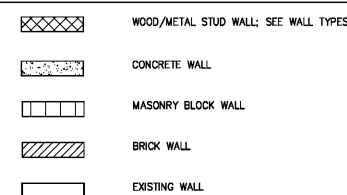
### ABBREVIATIONS

ABV ABOVE FINISHED FLOOR	AW WALL MOUNTED	LAB LABORATORY	LAV LAVATORY
AC ACCESSORY	AWA WALL MOUNTED ACCESSORY	LEF LEAD	LEH LEAD
AC TILE	AWD WALL MOUNTED ACCESSORY DETAIL	LCB LIGHT CONC	LES LEAD SHEET
AD ADJUSTABLE	AWH WALL MOUNTED ACCESSORY HAND DRYER	LLC LIGHT CONC	LEW LEAD
ADU ADJUSTABLE DRAINAGE UNIT	AWL WALL MOUNTED ACCESSORY WALL	LMP LIGHT POLY	LFL LEAD FLOOR
A/C AIR CONDITIONING	AWP WALL MOUNTED ACCESSORY WINDOW	MAN MANUFACTURER	LPL LEAD
ALT ALTERNATE	AWS WALL MOUNTED ACCESSORY WINDOW SILL	MANUF MANUFACTURER	MAC MASONRY ACCESSORY CONCRETE
ALUM ALUMINUM	AWT WALL MOUNTED ACCESSORY WINDOW TYPICAL	MAT MASONRY ACCESSORY TILE	MACB MASONRY ACCESSORY BLOCK
ANCH ANCHOR BOLT	AWS WALL MOUNTED ACCESSORY WINDOW SILL	MBA MASONRY ACCESSORY BRICK	MACC MASONRY ACCESSORY CONCRETE
ARCH ARCHITECTURAL	AWSA WALL MOUNTED ACCESSORY WINDOW SILL ASBESTOS	MBS MASONRY ACCESSORY BRICK	MACD MASONRY ACCESSORY CONCRETE DETAIL
ASPH ASPHALT	AWSD WALL MOUNTED ACCESSORY WINDOW SILL DETAIL	MCD MASONRY ACCESSORY CONCRETE DETAIL	MACF MASONRY ACCESSORY CONCRETE FINISH
AT AT	AWSE WALL MOUNTED ACCESSORY WINDOW SILL ELECTRICAL	MCS MASONRY ACCESSORY CONCRETE SPECIAL	MACG MASONRY ACCESSORY CONCRETE GRADE
B BASEMENT	AWSL WALL MOUNTED ACCESSORY WINDOW SILL LEAD	MCSB MASONRY ACCESSORY CONCRETE BRICK	MACH MASONRY ACCESSORY CONCRETE HAND
BBB BRICK	AWSEW WALL MOUNTED ACCESSORY WINDOW SILL ELECTRICAL WINDOW	MCSG MASONRY ACCESSORY CONCRETE GROUND	MACI MASONRY ACCESSORY CONCRETE INSULATION
BBS BRICK	AWSEH WALL MOUNTED ACCESSORY WINDOW SILL ELECTRICAL HAND	MCSM MASONRY ACCESSORY CONCRETE MASONRY	MACJ MASONRY ACCESSORY CONCRETE JOINT
BS BRICK	AWSEL WALL MOUNTED ACCESSORY WINDOW SILL ELECTRICAL LEAD	MCSN MASONRY ACCESSORY CONCRETE NICKEL	MACK MASONRY ACCESSORY CONCRETE KITCHEN
BST BRICK	AWSEW WALL MOUNTED ACCESSORY WINDOW SILL ELECTRICAL WINDOW	MCSO MASONRY ACCESSORY CONCRETE OAK	MACL MASONRY ACCESSORY CONCRETE LATH
BTL BRICK	AWSEW WALL MOUNTED ACCESSORY WINDOW SILL ELECTRICAL WINDOW	MCSQ MASONRY ACCESSORY CONCRETE QUARTZ	MACM MASONRY ACCESSORY CONCRETE MASONRY
BZ BRICK	AWSEW WALL MOUNTED ACCESSORY WINDOW SILL ELECTRICAL WINDOW	MCSR MASONRY ACCESSORY CONCRETE SCHEDULE	MACN MASONRY ACCESSORY CONCRETE NICKEL
BW BRICK	AWSEW WALL MOUNTED ACCESSORY WINDOW SILL ELECTRICAL WINDOW	MCSR MASONRY ACCESSORY CONCRETE SCHEDULE	MACO MASONRY ACCESSORY CONCRETE OAK
BW BRICK	AWSEW WALL MOUNTED ACCESSORY WINDOW SILL ELECTRICAL WINDOW	MCSR MASONRY ACCESSORY CONCRETE SCHEDULE	MACP MASONRY ACCESSORY CONCRETE PAPER

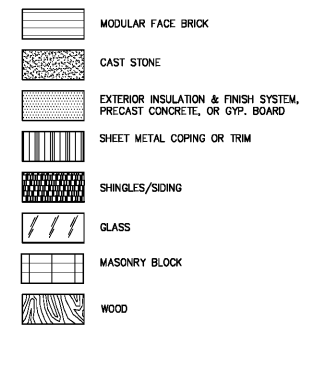
### SECTIONS LEGEND



### PLAN VIEW LEGEND



### ELEVATIONS LEGEND



### PROJECT REQUIREMENTS

GODWIN + ASSOCIATES IS NOT RESPONSIBLE FOR FIELD ACTIVITIES ON THIS PROJECT WITHOUT DIRECT SUPERVISION OF WORK IN PROGRESS. IT IS NEITHER EXPRESSED NOR IMPLIED THAT THE CONTRACTOR CAN CONSTRUCT THIS PROJECT UNDER THE ARCHITECT'S FIELD OBSERVATIONS. IF FIELD CONDITIONS ARE UNUSUAL THAT REQUIRE A CHANGE OR ADDITIONAL INFORMATION, THE ARCHITECT DOES NOT DELEGATE HIS AUTHORITY TO ANYONE ELSE FOR DETERMINING THE MEANING OF THESE PLANS OR SPECIFICATIONS.

DRAWINGS ARE NOT TO BE SCALED. DIMENSIONAL DATA SHALL BE OBTAINED FROM WRITTEN INFORMATION ONLY. VERIFY ALL DIMENSIONS BEFORE PROCEEDING. ANY DIMENSIONAL DEVIATION FROM THAT SHOWN ON THE DRAWINGS, WHICH MAY AFFECT INTENT OF DESIGN OR PROPER INCORPORATION OF ELEMENTS, SHALL BE BROUGHT TO THE ARCHITECT'S ATTENTION PROMPTLY AND RESOLUTION OBTAINED BEFORE PROCEEDING.

THE CONTRACTOR SHALL VISIT THE SITE AND FAMILIARIZE HIMSELF WITH ALL SITE CONDITIONS.

THE CONTRACTOR SHALL VERIFY ALL DIMENSIONS AND LOCATIONS OF EXISTING CONDITIONS PRIOR TO THE START OF CONSTRUCTION.

THE CONTRACTOR SHALL VERIFY LOCATIONS OF ALL EXISTING UTILITIES AND MAKE CONNECTIONS THERETO PER LOCAL UTILITY COMPANY REQUIREMENTS.

CONTRACTOR SHALL PROPERLY SHORE UP EXISTING STRUCTURE (IF ANY) WHICH REMAINS DURING CONSTRUCTION. ANY EXISTING WALLS SHOWN TO BE REMOVED THAT ARE, DURING CONSTRUCTION, FOUND TO BE LOAD BEARING OR PERTINENT TO THE STRUCTURAL STABILITY OF THE STRUCTURE, CONTRACTOR SHALL CONTACT ARCHITECT FOR REQ'D ACTION TO BE TAKEN. ALL TEMPORARY STRUCTURAL SUPPORT SHALL BE IN PLACE PRIOR TO REMOVAL OF EXISTING STRUCTURAL MEMBERS.

THE CONTRACTOR SHALL PAY FOR ALL NECESSARY PERMITS, FEES, LICENSES AND INSPECTIONS, WITH EXCEPTION OF PRIMARY BUILDING PERMIT, WHICH WILL BE PAID FOR BY OWNER.

ALL WORK SHALL CONFORM TO ALL APPLICABLE CODES AND ORDINANCES. THE MORE STRINGENT TO GOVERN. DISCREPANCIES BETWEEN CONTRACT DOCUMENTS AND CODES SHALL BE BROUGHT TO THE ARCHITECT'S ATTENTION PROMPTLY AND RESOLUTION OBTAINED BEFORE PROCEEDING.

NO ASBESTOS PRODUCTS ARE PERMITTED ON THIS PROJECT AND CERTIFICATION OF SAME MAY BE REQUIRED UPON REQUEST PRIOR TO COMMENCEMENT OF WORK. CONTRACTOR SHALL REQUEST FROM THE OWNER AN ASBESTOS SURVEY AND ABATEMENT CERTIFICATE.

THE CONTRACTOR SHALL PROVIDE PAYROLL LIST FOR LABOR, MATERIALS, CONSTRUCTION EQUIPMENT AND MACHINERY, TOOLS, UTILITIES, TRANSPORTATION FOR THE ABOVE MENTIONED AND ANY OTHER FACILITIES OR SERVICES NECESSARY FOR THE PROPER EXECUTION AND COMPLETION OF THE WORK.

THE CONTRACTOR SHALL CAREFULLY STUDY AND COMPARE THE CONSTRUCTION DOCUMENTS AND SPECIFICATIONS WITH THE INFORMATION FURNISHED BY THE OWNER AND IMMEDIATELY NOTIFY THE ARCHITECT OF ANY ERRORS, INCONVENIENCES OR OMISSIONS DISCOVERED.

A MATERIAL CALL-OUT IS ABSENT FROM ANY DRAWING, DETAIL, OR SPECIFICATION IN THE DOCUMENTS, THE CONTRACTOR SHALL REQUEST INFORMATION AND/OR CLARIFICATION FROM THE ARCHITECT IN WRITING PRIOR TO SUBMITTING A BID. FAILURE TO REQUEST INFORMATION AND/OR CLARIFICATION FROM THE ARCHITECT PRIOR TO SUBMITTING A BID WILL BE DEEMED AS WAIVER BY THE CONTRACTOR AND HIS/HER BID INCLUDES ADEQUATE FUNDS TO COMPLETE THE PROJECT AS REASONABLY INFERRED FROM THE DOCUMENTS.

WHENEVER CONFLICTING INFORMATION OR DIRECTION OCCURS IN THE SPECIFICATIONS OR THE DRAWINGS, THE COST FOR THE MORE EXPENSIVE OPTION INCLUDING, BUT NOT LIMITED TO, DETAILS, INSTALLATIONS, PROCEDURES, CALL-OUTS, MATERIALS, SCHEDULES, OR SPECIFICATION SHALL BE USED IN THE CONTRACTOR'S BID PRICE FOR THE PROJECT. IF, THROUGH CLARIFICATION, THE LESSER COST OPTION APPLIES, THEN THE CONTRACTOR SHALL ISSUE A COST CREDIT TO THE OWNER FOR THE ACTUAL COST DIFFERENCE PLUS CONTRACTOR MARKUP INCLUDING OVERHEAD AND PROFIT.

ALL DETAILS AND SECTIONS SHOWN ON THE DRAWINGS ARE INTENDED TO BE TYPICAL AND SHALL BE CONSTRUED TO APPLY TO SIMILAR CONDITIONS ELSEWHERE. IF A CONDITION EXISTS IN THE DRAWINGS WHERE THE APPLICABLE CONSTRUCTION DETAIL IS UNCLEAR, THE CONTRACTOR SHALL REQUEST INFORMATION AND/OR CLARIFICATION FROM THE ARCHITECT IN WRITING PRIOR TO SUBMITTING THE BID FOR CONSTRUCTION OF THE PROJECT.

ALL DIMENSIONS INDICATED IN CONTRACT DOCUMENTS ARE FROM FACE OF STUD TO FACE OF STUD, FACE OF EXISTING STRUCTURE OR FINISH FACE OF CONCRETE OR BLOCK, OR TO STRUCTURAL LINE, EXCEPT AS NOTED OTHERWISE. DIMENSIONS OF EXISTING STRUCTURE, ETC. ARE +/- AND SHOULD BE FIELD VERIFIED PRIOR TO COMMENCEMENT OF WORK AND ARCHITECT IS NOTIFIED OF ANY DISCREPANCIES.

PROVIDE SOLID BLOCKING AS REQUIRED TO INSTALL EQUIPMENT, MILLWORK, ETC.

GENERAL CONDITIONS OF THE CONTRACT FOR CONSTRUCTION (AIA DOCUMENT A201) SHALL BE BINDING AS PART OF THESE CONSTRUCTION DOCUMENTS.

THE ARCHITECT AND THE ARCHITECT'S CONSULTANTS SHALL BE DEEMED THE AUTHORS AND OWNERS OF THEIR RESPECTIVE INSTRUMENTS OF SERVICE, INCLUDING THE DRAWINGS AND SPECIFICATIONS, AND SHALL RETAIN ALL COMMON LAW, STATUTORY AND OTHER RESERVED RIGHTS, INCLUDING COPYRIGHTS. SUBMISSION OR DISTRIBUTION OF INSTRUMENTS OF SERVICE TO MEET OFFICIAL REGULATORY REQUIREMENTS OR FOR SIMILAR PURPOSES IN CONNECTION WITH THE PROJECT IS NOT CONSTRUED AS PUBLICATION IN DEROGATION OF THE RESERVED RIGHTS OF THE ARCHITECT AND THE ARCHITECT'S CONSULTANTS.

FAILURE TO COMPENSATE GODWIN + ASSOCIATES FOR THE USE OF THESE DRAWINGS AS GOVERNED BY THE TERMS OF THE CLIENT-ARCHITECT AGREEMENT (CONTRACT ON FILE), SHALL BE CONSIDERED SUBSTANTIAL NON-PERFORMANCE AND CONSTITUTE A BREACH OF CONTRACT AND RESULTS IN THE LOSS OF PERMISSION TO USE THESE DRAWINGS AFTER FAILURE TO COMPENSATE GODWIN + ASSOCIATES WITHIN THE TIME FRAME SPECIFIED BY THE ARCHITECT CONSTITUTES COPYRIGHT INFRINGEMENT. A SERVICE FEE OF 1.5% WILL BE CHARGED PER MONTH ON THE UNPAID BALANCE. THE CLIENT SHALL PAY ALL COSTS OF COLLECTION, INCLUDING ATTORNEY'S FEES.

IN THE EVENT THE OWNER USES THE INSTRUMENTS OF SERVICE WITHOUT RETAINING THE AUTHORS OF THE INSTRUMENTS OF SERVICE, THE OWNER RELEASES THE ARCHITECT AND ARCHITECT'S CONSULTANTS (S) FROM ALL CLAIMS AND CAUSES OF ACTION ARISING FROM SUCH USES. THE OWNER, TO THE EXTENT PERMITTED BY LAW, FURTHER AGREES TO INDEMNIFY AND HOLD HARMLESS THE ARCHITECT AND ITS CONSULTANTS FROM ALL COSTS AND EXPENSES, INCLUDING THE COST OF DEFENSE, RELATED TO CLAIMS AND CAUSES OF ACTION ASSERTED BY ANY THIRD PERSON OR ENTITY TO THE EXTENT SUCH COSTS AND EXPENSES ARISE FROM THE OWNER'S USE OF THE INSTRUMENTS OF SERVICE.

THE OWNER SHALL NOT WITHHOLD AMOUNTS FROM THE ARCHITECT'S COMPENSATION TO IMPOSE A PENALTY OR LIQUIDATED DAMAGES ON THE ARCHITECT, OR TO OFFSET SUMS REQUESTED BY OR PAID TO CONTRACTORS FOR THE COST OF CHANGES IN THE WORK UNLESS THE ARCHITECT AGREES OR HAS BEEN FOUND LIABLE FOR THE AMOUNTS IN A BINDING DISPUTE RESOLUTION PROCEDURE.

THE ARCHITECT'S BASIC SERVICES INCLUDE USUAL AND CUSTOMARY STRUCTURAL, MECHANICAL, AND ELECTRICAL ENGINEERING SERVICES.

GENERAL CONTRACTOR SHALL COORDINATE ALL MECHANICAL, ELECTRICAL & PLUMBING WORK AND PROVIDE ALL NECESSARY CONSTRUCTION TO FACILITATE SAID WORK INCLUDING, BUT NOT LIMITED TO, ROUGH OPENINGS, EQUIPMENT SUPPORTS, BACKING AND COORDINATION OF FINISH WORK, WHETHER OR NOT SPECIFICALLY INDICATED ON CONTRACT DOCUMENTS.

SHOULD THE OWNER BECOME AWARE OF ANY FACTS OR CONDITIONS WHICH MAY ADVERSELY AFFECT THE PERFORMANCE OF THE STRUCTURE OR THE USE OF THE FACILITY OR AFFECT THE ARCHITECT (INCLUDING THE ARCHITECT'S CONSULTANTS) IN THE PERFORMANCE OF THE PROFESSIONAL SERVICE, THE OWNER SHALL IMMEDIATELY DISCLOSE SUCH MATERIAL FACTS OR AGREE TO BE RESPONSIBLE FOR THE COSTS OF LIABILITY ASSOCIATED WITH NON-DISCLOSURE.

ADDITIONAL WORK BEYOND THE WORK OF THIS CONTRACT SHALL NOT BE AUTHORIZED EXCEPT AS DIRECTED BY ARCHITECT AND WITH APPROVAL OF THE OWNER.

### GENERAL NOTES

- THESE FIXTURE AND ACCESSORIES MOUNTING DETAILS & REQUIREMENTS ARE TYPICAL AND APPLY TO REQUIRED ACCESSIBLE INSTALLATIONS ONLY. REFER TO PLANS FOR LOCATIONS AND TYPES OF LAYOUTS. EQUIPMENT SHOWN MAY OR MAY NOT APPEAR ON THIS PROJECT. IF A ROOM IS IN QUESTION AS TO BEING A REQUIRED ACCESSIBLE ROOM - CONTACT ARCHITECT FOR RESOLUTION.
- PROVIDE IN ALL LOCATIONS OF REQUIRED ACCESSORIES, ADEQUATE SOLID BLOCKING CAPABLE OF WITHSTANDING 250 LB. FORCE (SHEAR & BENDING). GRAB BARS SHALL NOT ROTATE. FASTENERS SHALL BE OF A TYPE TO WITHSTAND REQUIRED FORCE AND TYPED FOR TYPE OF WALL CONSTRUCTION.
- ALL EXTERIOR RAMPS SHALL HAVE A NON-SKID FINISH AS SPECIFIED. ALL INTERIOR RAMPS SHALL HAVE FLOOR MATERIAL OF NON-SKID FINISH (SEE SPECIFICATIONS). IF NO FINISH IS INDICATED ON DRAWINGS - PROVIDE RUBBER RADIAL TILE ON FINISH FLOOR SURFACE OF INTERIOR RAMPS. EXISTING RAMPS FINISHES ARE TO REMAIN AS IS.
- ANY METAL FLOOR GRATINGS OR DRAINAGE GRATINGS IN AN ACCESSIBLE PATH SHALL HAVE SPACES NO GREATER THAN 1/2" WIDE IN ONE DIRECTION. LONG DIMENSION SHALL BE PERPENDICULAR TO THE DOMINANT DIRECTION OF TRAVEL.
- ACCESSIBLE DOORS: SWEEP PERIOD OF DOOR CLOSERS ON ACCESSIBLE DOORS SHALL BE ADJUSTED SO THAT FROM OPEN POSITION OF 70°, DOOR WILL TAKE A MINIMUM OF 3 SECONDS TO MOVE TO A POINT 1" FROM THE LATCH. DOORS SHALL REQUIRE NO MORE THAN 5 LB. OF FORCE TO OPEN. ADJUST CLOSERS ACCORDINGLY.
- SEE DOOR SCHEDULE FOR MINIMUM REQUIRED CLEAR AREA AT LATCH SIDE OF DOOR.

**GODWIN + ASSOCIATES**  
architects & engineers

1200 Lake Woodhurst, D-100 • Springfield • Missouri 65804 • (417) 887-9687 • Fax (417) 887-9215

Professional Seal

STATE OF MISSOURI  
JAMES A. GODWIN  
REGISTERED ARCHITECT  
No. 001-019

Professional Seal

Revisions

NO.	DATE	DESCRIPTION

SPECIAL NOTICE: In the event the client consents to, allows, authorizes or approves of changes to any plans, specifications or other construction documents, and these changes are not approved in writing by the design professional, the client recognizes that such changes and the results thereof are not the responsibility of the design professional. Therefore, the client agrees to release the design professional from any liability arising from the construction, use or result of such changes. In addition, the client agrees to the fullest extent permitted by law, to indemnify and hold the design professional harmless from any damage, liability or cost (including reasonable attorney's fees and costs of defense) arising from such changes.

Copyright © 2019 by GODWIN + ASSOCIATES. All rights reserved. No part of this drawing may be reproduced by photocopying or by any other means, or stored, processed, or transmitted in or by any computer or other systems without the prior written permission of GODWIN + ASSOCIATES.

Project Number: 49034  
Drawn By: DWG  
Reviewed By: JAG  
Date: 04.10.19

**True Rest Float Spa**

2995 Cobb Parkway Southeast  
Cobb County, GA 30339

### Architectural General Information

CONSTRUCTION DOCUMENTS  
Sheet Number  
**A0.0**