

PROJECT INFORMATION

TENANT BUILD-OUT FOR:
ASPEN DENTAL
 660 W. LINTON BLVD., STE. 380 • DELRAY BEACH, FL 33444

PROFESSIONAL SEAL

SHEET DATES
 ISSUE DATE MAY 29, 2019

REVISIONS

JOB NUMBER
 1931400

SHEET NUMBER
P1.2

DENTAL EQUIPMENT COORDINATION:

- PLUMBING CONTRACTOR SHALL VERIFY TYPE AND LOCATION OF ALL DENTAL EQUIPMENT, ROUGH-IN DIMENSIONS, AND REQUIRED PLUMBING CONNECTIONS. PLUMBING CONTRACTOR SHALL FURNISH AND INSTALL ALL FLOOR FIXTURES, FLOOR DRAINS, HUB DRAINS, WATER CLOSETS, LAVATORIES AND FLOOR SINKS. DENTAL EQUIPMENT SUPPLIER SHALL FURNISH AND INSTALL ALL FIXTURES IDENTIFIED ON THEIR PLANS (WITH THE EXCEPTION OF THOSE IDENTIFIED ABOVE). DENTAL EQUIPMENT SUPPLIER SHALL INSTALL ALL DENTAL EQUIPMENT AND PROVIDE ALL FIXTURE TRAPS, SUPPLIES AND STOPS, ISOLATION VALVES, MIXING VALVES, ETC. AND MAKE FINAL CONNECTIONS TO DENTAL EQUIPMENT. PLUMBING CONTRACTOR SHALL MAKE FINAL CONNECTION TO AIR COMPRESSOR AND VACUUM SYSTEM. VERIFY ALL EQUIPMENT CONNECTIONS WITH ADMI AND DENTAL EQUIPMENT SUPPLIER PRIOR TO INSTALLATION. PROVIDE ADDITIONAL CONNECTIONS AS REQUIRED. COORDINATE ALL WORK ACCORDINGLY.

GENERAL NOTES:

- ALL VACUUM LINES SHALL BE INSTALLED BELOW SLAB UNLESS OTHERWISE NOTED.
- TERMINATE COMPRESSED AIR LINES PER DENTAL EQUIPMENT DETAILS.
- COMPRESSED AIR SHALL BE INSTALLED ABOVE CEILING UNLESS OTHERWISE NOTED.
- FINAL CONNECTIONS TO AIR COMPRESSOR AND VACUUM SYSTEM BY PLUMBING CONTRACTOR.
- REFER TO SHEET U.1.1 PRIOR TO ROUGH-IN OF FIXTURES.
- TERMINATION OF 1/2" VACUUM LINES TO BE REDUCED TO 1/2" FEMALE THREAD TYPICAL. FOR ALL UTILITY CENTERS, TERMINATION OF 1/2" AIR LINES TO BE MALE THREAD WITH 3/8" COMPRESSION FITTING TYPICAL. ALL PLUMBING AND ELECTRICAL FOR UTILITY CENTER SHALL BE CONTAINED WITHIN 12" X 12" AREA IN FLOOR. SEE DENTAL EQUIPMENT DRAWINGS FOR FURTHER INFORMATION.
- ALL PIPING IS TO BE CONCEALED. IF BUILDING CONSTRUCTION DOES NOT PERMIT CONCEALING PIPING, LOCATIONS AND ROUTING ARE TO BE APPROVED BY ARCHITECT/OWNER PRIOR TO INSTALLATION.
- SYSTEMS SHALL BE INSTALLED BY CERTIFIED MED GAS INSTALLER PER FBC 2017 / NFPA 99 REQUIREMENTS.
- SYSTEMS INSTALLATION SHALL BE CERTIFIED BY MED GAS INSPECTOR PER FBC 2017 / NFPA 99 REQUIREMENTS.

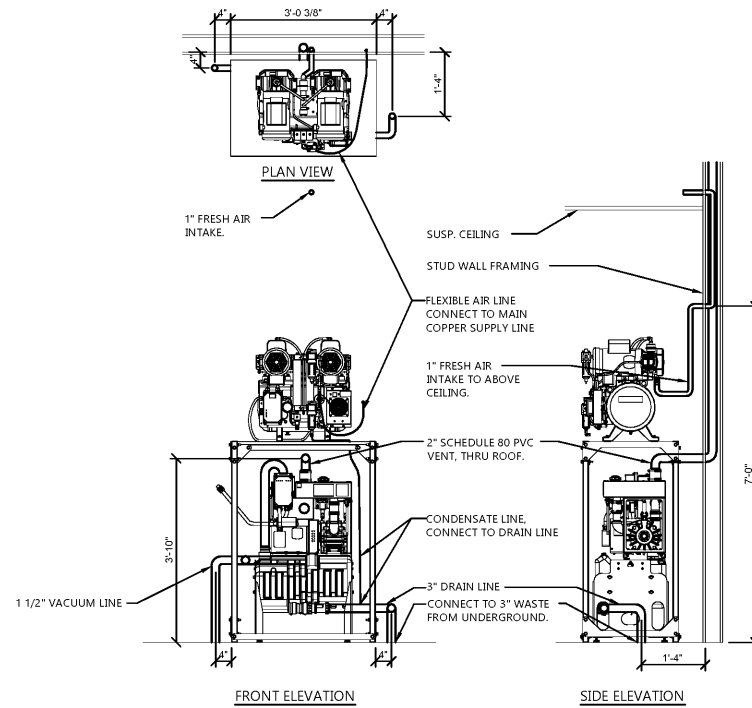
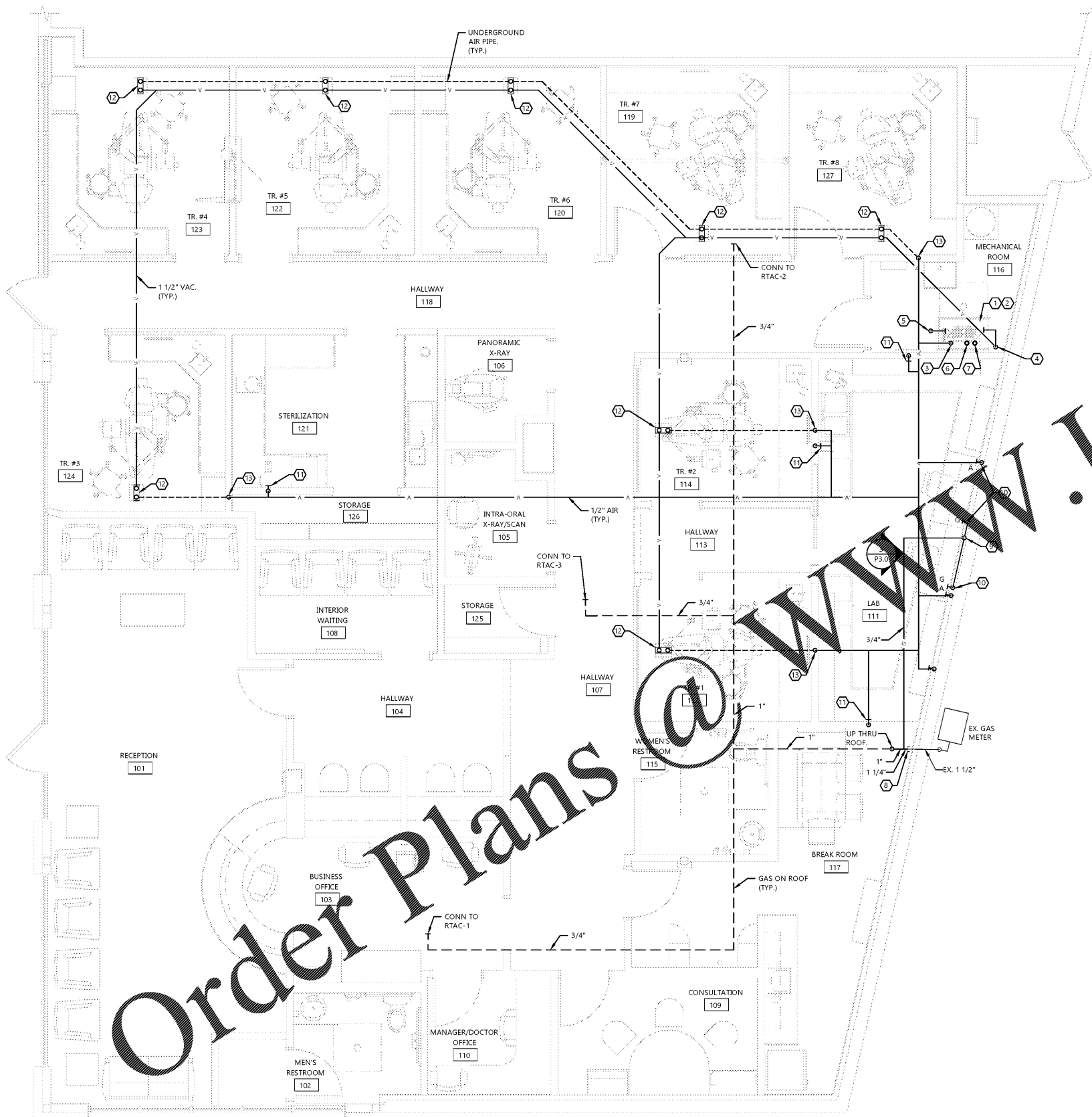
KEYNOTES:

- AIR COMPRESSOR TO BE FURNISHED AND INSTALLED BY THE OWNER'S EQUIPMENT PROVIDER.
- VACUUM EQUIPMENT TO BE FURNISHED AND INSTALLED BY THE OWNER'S EQUIPMENT PROVIDER. UNIT CONTAINS INTEGRAL AMALGAM SEPARATOR.
- ROUTE 1/2" COMPRESSED AIR LINE ABOVE CEILING AND TRANSITION TO HORIZONTAL FOR DISTRIBUTION. VERIFY LINE SIZE AND CAPACITY REQUIREMENTS WITH TENANT AND EQUIPMENT MANUFACTURER PRIOR TO INSTALLATION.
- ROUTE 1/2" VACUUM PIPING DOWN BELOW FLOOR FOR DISTRIBUTION.
- ROUTE VACUUM DISCHARGE TO ADJACENT 3" HUB DRAIN AS SHOWN ON SHEET P.1.1. DISCHARGE IN ACCORDANCE WITH PLUMBING CODE. SEE RAM-VAC DETAIL FOR MORE INFORMATION.
- CONNECT 2" PVC TO VACUUM HEADS AND ROUTE TO V.T.R. TERMINATE ABOVE ROOF WITH GOOSENECK FITTING. DO NOT JOIN WITH SANITARY VENT. MAINTAIN ALL CODE REQUIRED CLEARANCES ON THE ROOF. COORDINATE VTR LOCATIONS WITH MECHANICAL EQUIPMENT. SEE RAM-VAC DETAIL FOR MORE INFORMATION.
- ROUTE 1" PVC UP ABOVE CEILING AND 2" AIR LINE DOWN FOR FRESH AIR INTAKE FOR AIR COMPRESSOR. INSTALL TIME DELAYED EQUIPMENT INSTALLATION. DO NOT JOIN WITH SANITARY VENT. SEE RAM-VAC DETAIL FOR MORE INFORMATION.
- ROUTE GAS PIPING TO LAB WORK PROVIDED TERMINATION ABOVE CEILING. COORDINATE GAS LOAD WITH UTILITY.
- ROUTE 1/2" GAS LINE DOWN IN WALL TO RECESSED SHUTOFF BOX WITH VALVE. PROVIDE "WATTS" APU-9 10"x10" SPRING FIT ACCESS PANEL LAB AS "GAS SHUTOFF". ROUTE GAS TO LAB WORK STATIONS AND PROVIDE 1/2" BRANCH LINES TO INDIVIDUAL LAB STATIONS. VERIFY ROUGH-IN LOCATION WITH TENANT REPRESENTATIVE. SEE LAB WORK STATION ELEVATION 3/P.3.0. PROVIDE GAS PRESSURE REGULATOR AND EXTERIOR VENT IF REQUIRED PER OWNER FURNISHED EQUIPMENT (COORDINATE WITH OWNER AS REQUIRED).
- PROVIDE 1/2" GAS LINE AND 1/2" AIR LINE STUBBED OUT AT LAB WORK STATION ELEVATION (SEE DETAIL 3/P.3.0). PLUMBING CONTRACTOR TO MAKE FINAL CONNECTIONS.
- PROVIDE 1/2" COMPRESSED AIR CONNECTION AT 44" A.F.F. SEE DETAIL 1/M.D AIR VALVE DETAIL FOR ADDITIONAL REQUIREMENTS.
- PROVIDE 1/2" VACUUM CONNECTION AND 1/2" COMPRESSED AIR CONNECTION TO UTILITY CENTER. STUB PIPING UP THROUGH FLOOR TO UTILITY CENTER ENCLOSURE FOR TERMINATION BY OWNER'S EQUIPMENT PROVIDER. SEE DETAIL 5/M.D. PROVIDE CLOSED CELL INSULATION BETWEEN THE COPPER PIPING AND CONCRETE FLOOR.
- ROUTE 1/2" COMPRESSED AIR PIPING DOWN THRU WALL AND BELOW FLOOR FOR DISTRIBUTION. PROVIDE CLOSED CELL INSULATION BETWEEN THE COPPER PIPING AND CONCRETE FLOOR.

GAS LOAD SUMMARY

ITEM	MBH INPUT	REQUIRED PRESSURE
RTAC-1	67	7" W.C.
RTAC-2	67	7" W.C.
RTAC-3	67	7" W.C.
LAB	2.4	7" W.C.
Total	203.4	

- GAS PRESSURE AT METER = 7" W.C.



RAM-VAC DETAIL

NO SCALE

PLUMBING FLOOR PLAN - AIR AND VACUUM PIPING



FLOOR PLAN - AIR AND VACUUM PIPING

SCALE: 1/4" = 1'-0"

Order Plans @ www.lidline.com