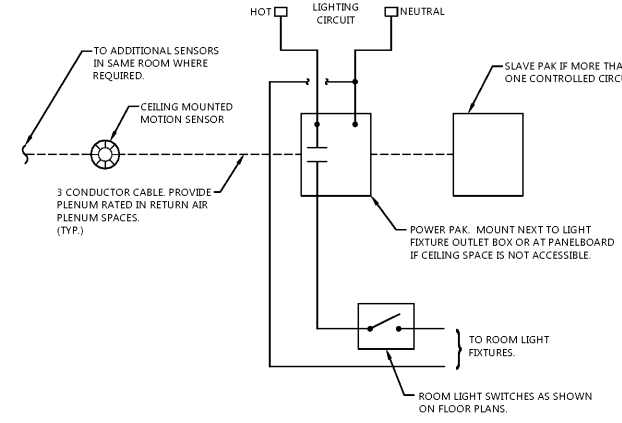
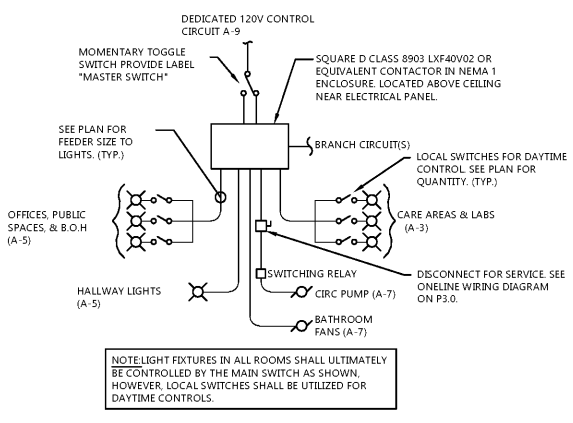
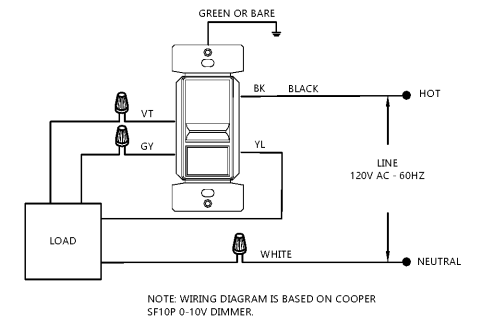
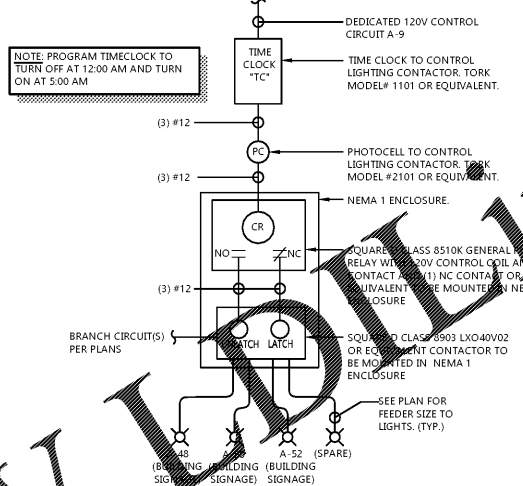


LIGHTING GENERAL NOTES:

- FIXTURE SHADING INDICATES THAT FIXTURE SHALL BE ON NIGHT LIGHT CIRCUIT.
- VERIFY ALL EXPOSED CONDUIT ROUTING WITH ARCHITECT/ENGINEER WHERE CONDUIT IS EXPOSED IN FINISHED ROOMS.
- E.C. SHALL PROVIDE ALL APPURTENANCES AND ACCESSORIES INCLUDING, BUT NOT LIMITED TO, PHOTOCELLS, CONTACTORS, SWITCHES, HANGERS, ETC., IN ORDER TO PROVIDE A COMPLETE AND OPERABLE SYSTEM.
- COORDINATE FIXTURE LOCATIONS AND MOUNTING ASSEMBLIES WITH OTHER TRADES AND TYPE OF CONSTRUCTION TO ENSURE ADEQUATE MOUNTING.
- ALL TYPE "XE" AND "EM1" EMERGENCY LIGHTS WITH 90 MINUTE BATTERY BACK-UP. BATTERY CHARGER TO BE CIRCUITED TO UNSWITCHED LEG OF LOCAL LIGHT CIRCUIT.
- ALL WALL MOUNTED EMERGENCY LIGHTS 8'-0" AFF.
- SEE ARCHITECTURAL REFLECTED CEILING AND ELEVATION PLANS FOR LOCATION OF ALL LIGHTING FIXTURES. LOCATE FIXTURES IN ACCORDANCE WITH CEILING AND ELEVATION PLANS.

LIGHTING PLAN KEY NOTES:

- SEE INTERIOR LIGHTING CONTROL DETAIL E1.1L FOR SWITCHING SCHEMES.
- CIRCUIT NIGHT LIGHTS UNSWITCHED TO CIRCUIT A1-1.
- PRC SWITCH BANK (A-F.F.)
- PROVIDE 0-10V SLIDE DIMMER WITH ON/OFF SWITCH, PER SPECIFICATIONS FOR ALL DIMMERS CONTROLLING "A" FIXTURES. SEE 0-10V DIMMER WIRING DIAGRAM #2/E1.1L.
- WIRE REMOTE EXTERIOR EGRESS EMERGENCY HEADS FROM EXIT LIGHT BATTERY AS SHOWN. IF EXTERIOR EGRESS EMERGENCY LIGHTING IS NOT ALREADY EXISTING.
- MOUNT BOTTOM OF FIXTURE AT 7'-0" A.F.F.
- PROVIDE EXIT AS DOUBLE FACE.
- LIGHT HOUSING FOR "B" FIXTURE TO BE PROVIDED BY EC. HOUSING TO BE COOPER H750T.
- PROVIDE SLIDE DIMMER WITH ON/OFF SWITCH PER SPECIFICATIONS. TYPICAL ALL DIMMERS CONTROLLING "B" FIXTURES.
- MOUNT EXIT LIGHT TO FACE OF SOFFIT.



Order Plans

FLOOR PLAN - LIGHTING
SCALE: 1/4" = 1'-0"

EXCEL
ARCHITECTS • ENGINEERS • SURVEYORS
Always a Better Plan
100 Camelot Drive
Fond Du Lac, WI 54935
Phone: (920) 926-9800
www.EXCELENGINEER.com

COLLABORATION
AspenDental

PROJECT INFORMATION

TENANT BUILD-OUT FOR:
ASPEN DENTAL
660 W. LINTON BLVD., STE. 380 • DELRAY BEACH, FL 33444

PROFESSIONAL SEAL

SHEET DATES

ISSUE DATE: MAY 29, 2019

REVISIONS

JOB NUMBER
1931400

SHEET NUMBER
E1.1L