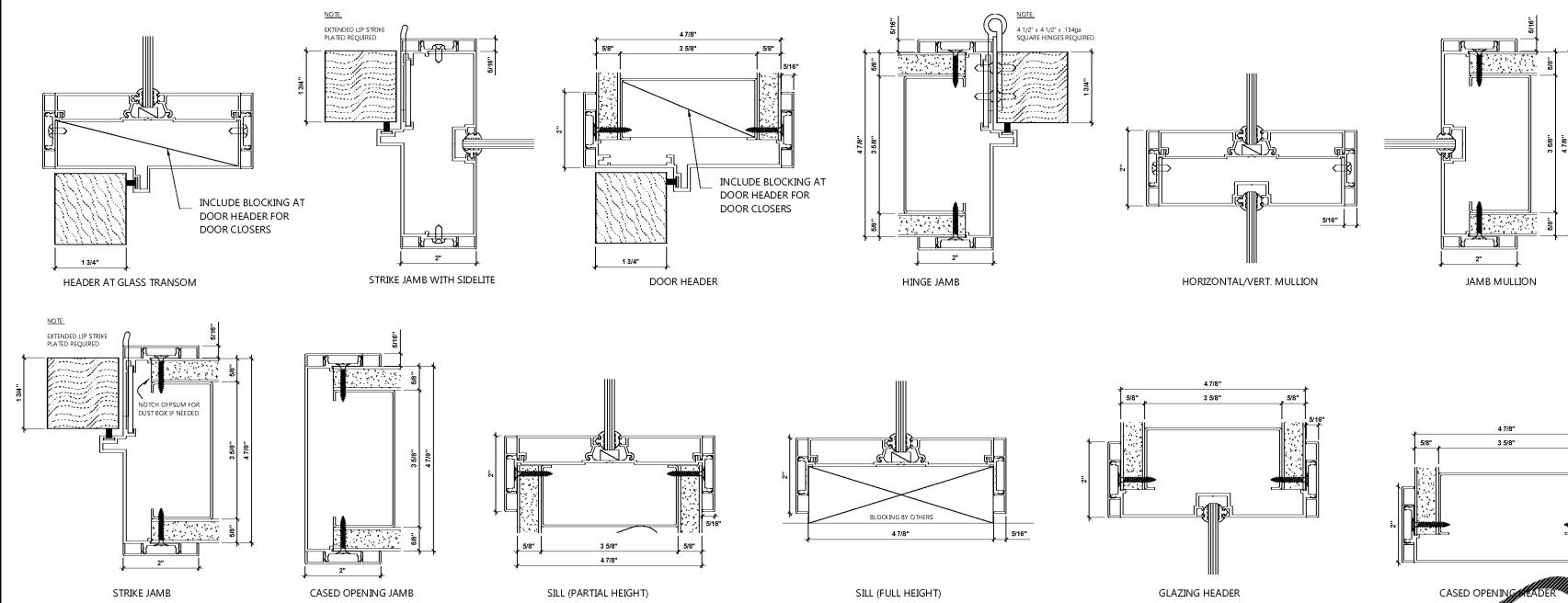


WILSON PARTITIONS FRAME DETAILS



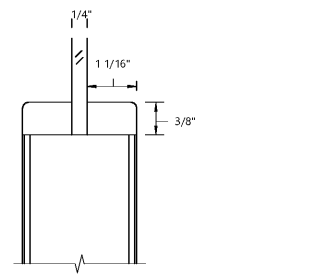
GLAZING SCHEDULE

GLAZING SHALL MEET THE FOLLOWING STANDARDS AND GUIDELINES AS APPLICABLE FOR EACH TYPE:

- ASTM E 1300, ASTM C 1036, ASTM C 1048, ASTM E 774
- GANA GLAZING MANUAL
- SGMA TM-3000 VERTICAL GLAZING GUIDELINES

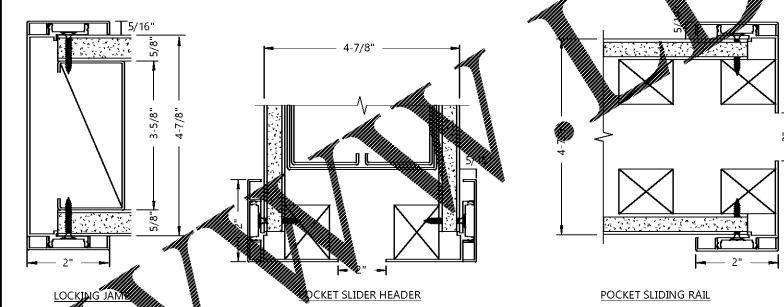
GL-2: CLEAR FLOAT GLASS, TEMPERED

LITE: TYPE I, CLASS I, QUALITY Q3 FLOAT GLASS, KIND FT (FULLY TEMPERED), CONDITION A, 1/4" THICK



6 A3.0 DOOR WOOD FLUSH MOULDING NOT TO SCALE

WILSON PARTITIONS POCKET DOOR FRAME DETAILS



DOOR SCHEDULE

DOOR NUMBER	DOOR SIZE			DOOR TYPE	FRAME FINISH	FRAME TYPE	FRAME FINISH	HARDWARE		REMARKS
	WIDTH	HEIGHT	THICKNESS					PASSAGE LOCKSET	PRIVACY LOCKSET	
101	3'-0"	7'-0"	1 3/4"	A	A	A	1	•		
102	3'-0"	7'-0"	1 3/4"	B	A	A	2	•		UNDERCUT 1"
109	3'-0"	7'-0"	1 3/4"	A	A	A	3	•		
110	3'-0"	7'-0"	1 3/4"	B	A	A	4	•		
111	3'-0"	7'-0"	1 3/4"	C	A	A	3	•		1)
115	3'-0"	7'-0"	1 3/4"	B	A	A	2	•		UNDERCUT 1"
116	3'-0"	7'-0"	1 3/4"	B	A	A	1	•		
117	3'-0"	7'-0"	1 3/4"	B	A	A	3	•		
119	3'-0"	7'-0"	1 3/4"	D	A	A	3	•		
125	3'-0"	7'-0"	1 3/4"	B	A	A	3	•		
127	3'-0"	7'-0"	1 3/4"	D	A	A	3	•		

SEE SHEET A6.1 & NOTE BELOW

SEE SHEET A6.1

DOOR REMARKS:

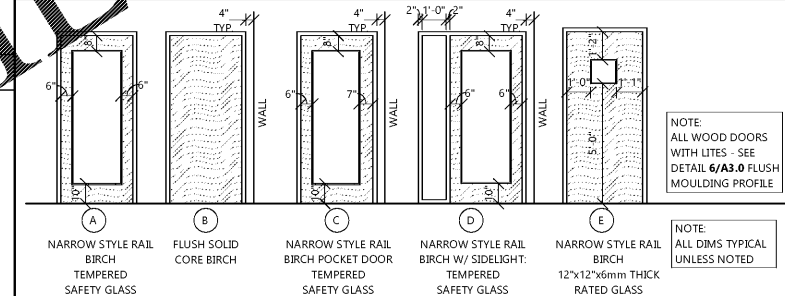
1: SLIDING POCKET DOOR, DOOR KIT TO BE HAGAR 9630 HEAVY DUTY POCKET DOOR KIT. HARDWARE TO BE STANDARD HEAVY DUTY TRACK WITH ALL HARDWARE FINISHES AS BRUSHED ALUMINUM (626)

R1: PROVIDE (3) EQ. SIZE SLIDING DOOR LEAFS FOR OPENING SIZE SHOWN IN SCHEDULE REFERS TO FINISHED SIZE. DOOR SUPPLIER TO PROVIDE ALL REQUIRED ADA SLIDING DOOR HARDWARE & ACCESSORIES. DOORS SHALL BE OPERABLE FROM BOTH SIDES WHEN DOOR IS OPEN, PER ANSI 404.2.6. FLUSH PULL CUPS, HAGAR 2630 USED OR EQUAL.

(DOOR HARDWARE SHALL BE CAPABLE OF OPERATING WITH THE USE OF ONE (1) HAND AND SHALL NOT REQUIRE TIGHT PINCHING, TIGHT GRASPING OR TWISTING OF THE WRIST TO OPERATE. TURN DEADBOLTS ARE PROHIBITED AT INTERIOR. IF PROVIDED AT EXTERIOR (PER 1008.19.3 SUB 2) PROVIDE BODILY VISIBLE PERMANENT MESSAGE OR PAD ADJACENT TO DOOR STATING "THIS DOOR TO REMAIN UNLOCKED WHEN BUILDING IS OCCUPIED". SEE SHEET A5.0 FOR SCHEDULE. TURN DEADBOLTS RELEASES ARE ACCEPTABLE. DOOR THRESHOLD SHALL NOT EXCEED 1/2" IN HEIGHT, THRESHOLD EXCEEDING 1/4" IN HEIGHT SHALL HAVE A 1:2 BEVEL. DOOR CLOSERS SHALL MEET OPENING FORCE AND SWEEP PERIOD REQUIREMENTS.)

PROVIDE TACTILE EXTENSION SIGNAGE ON ALL EXIT DOORS - SEE SHEET A5.0

DOOR TYPES



DOOR/FRAME TYPE SPECIFICATIONS

FRAMES - WILSON PARTITIONS ALUMINUM FRAME OR EQUAL (SEE DOOR SCHEDULE ABOVE FOR DOOR SIZES)

WILSON PARTITIONS ALUMINUM FRAME WITH 12" SIDELIGHT OR EQUAL (SEE DOOR SCHEDULE ABOVE FOR DOOR SIZES)

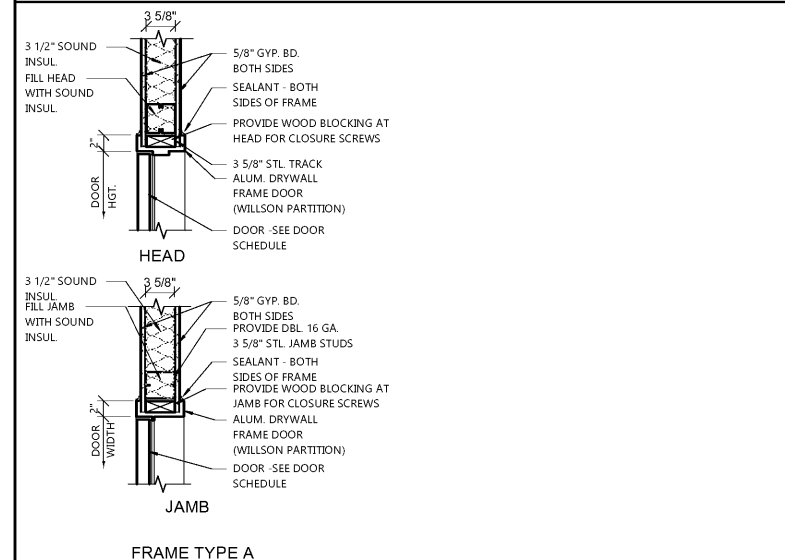
DOORS - MASONITE ARCHITECTURAL DOOR; (SEE DOOR SCHEDULE ABOVE FOR SIZES & A6.1 FOR DOOR FINISHES)

TYPE - VENEER 5, ROTARY BIRCH SELECT WHITE, CLEAR COAT - DOORS TO BE FACTORY PRE-FINISHED

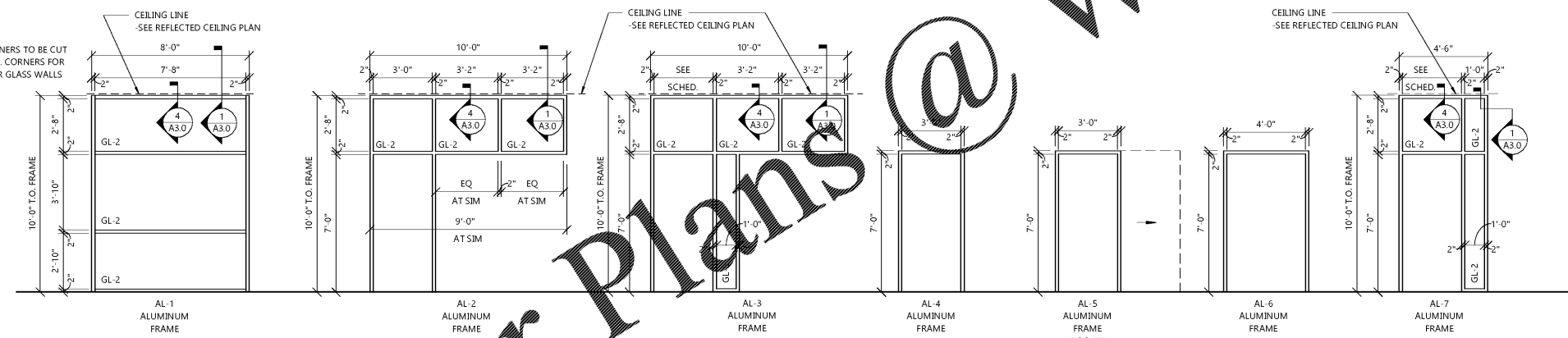
HARDWARE TYPES

SET 1 HAGER 3500 SERIES WITHNELL LEVER; HINGES: MCKINNEY, MPB79 4 1/2" x 4 1/2", 1/2" PAIR PER DOOR, CLOSER: HAGAR 5200 US26D WALL STOP: ROCKWOOD 406US26D	SET 3 HAGER 3500 SERIES WITHNELL LEVER; HINGES: MCKINNEY, MPB79 4 1/2" x 4 1/2", 1/2" PR. PER DOOR WALL STOP: ROCKWOOD 406US26D
SET 2 HAGER 3500 SERIES WITHNELL LEVER; HINGES: MCKINNEY, MPB79 4 1/2" x 4 1/2", 1/2" PAIR PER DOOR, CLOSER: HAGAR 5200 US26D WALL STOP: ROCKWOOD 409US26D, GENDER SIGN (SEE SHEET A5.0) DEADBOLT: SCHLAGE B-571; FINISH: 626 (BRUSHED NICKEL)	SET 4 LATCHSET: HAGAR 330D X US26 D DOOR KIT: HAGAR 9630 HEAVY DUTY POCKET DOOR KIT DOOR FRAME: JOHNSON HARDWARE 153070PF
HARDWARE NOTES: 1. CONTRACTOR TO SUBMIT DETAILED HARDWARE SCHEDULE WITH COMPLETE CUT-SHEETS TO OWNER FOR FINAL APPROVAL. 2. HAGAR 3500 SERIES WITHNELL ADA LEVER TYPE HARDWARE. 3. ALL LOCKSETS TO BE US26D FINISH. 4. EXTERIOR HARDWARE AS SELECTED BY OWNER TO BE HAGAR 4500 SERIES WITH 45NL OUTSIDE TRIM IS US26D FINISH OR EQUAL DEADBOLT LOCK IF REQUIRED SHALL BE OPERATED BY KEY OUTSIDE AND THUMBTURN INSIDE (EXT. DOOR LOCATIONS ONLY). REUSE EXISTING IF APPLICABLE. 5. ALL CLOSERS NOTED IN HARDWARE SETS ABOVE TO BE MOUNTED ON INTERIOR ROOM SIDE.	

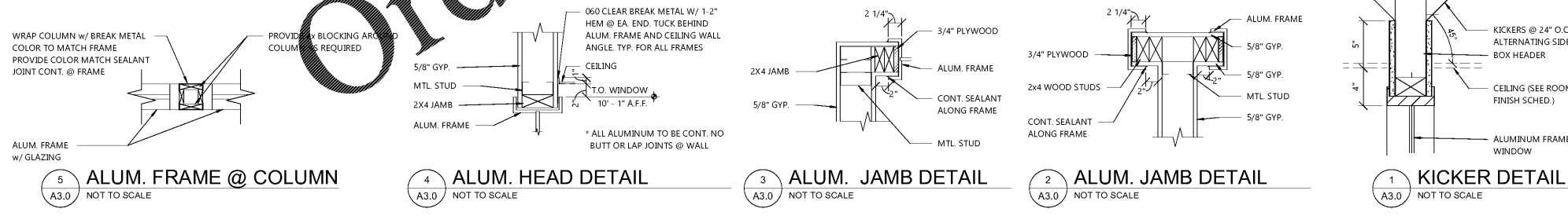
FRAME TYPES



ARCHITECTURAL DOOR SCHEDULE, ELEVATIONS, & DETAILS



ALUMINUM FRAME ELEVATIONS



5 A3.0 ALUM. FRAME @ COLUMN NOT TO SCALE

4 A3.0 ALUM. HEAD DETAIL NOT TO SCALE

3 A3.0 ALUM. JAMB DETAIL NOT TO SCALE

2 A3.0 ALUM. JAMB DETAIL NOT TO SCALE

1 A3.0 KICKER DETAIL NOT TO SCALE

EXCEL
ARCHITECTS • ENGINEERS • SURVEYORS
Always a Better Plan
100 Camelot Drive
Fond Du Lac, WI 54935
Phone: (920) 926-9800
www.EXCELENGINEER.com

COLLABORATION
AspenDental

PROJECT INFORMATION
TENANT BUILD-OUT FOR:
ASPEN DENTAL
660 W. LINTON BLVD., STE. 380 • DELRAY BEACH, FL 33444

PROFESSIONAL SEAL

SHEET DATES
SHEET ISSUE MAY 29, 2019

REVISIONS

JOB NUMBER
1931400

SHEET NUMBER
A3.0