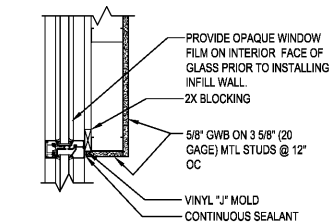


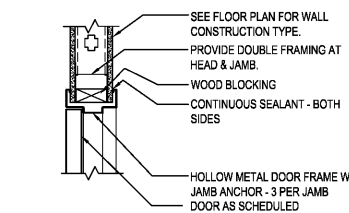
A FREIGHT DOOR ELEVATION (EGRESS DOOR SIMILAR)

A4 SCALE: 1/2" = 1'-0"



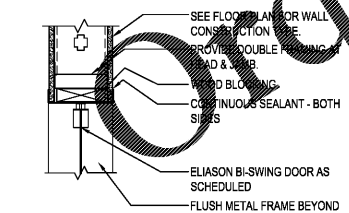
1 DETAIL

A4 SCALE: 1 1/2" = 1'-0"



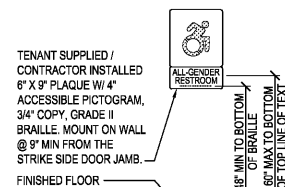
2 HEAD / JAMB DETAIL

A4 SCALE: 1 1/2" = 1'-0"



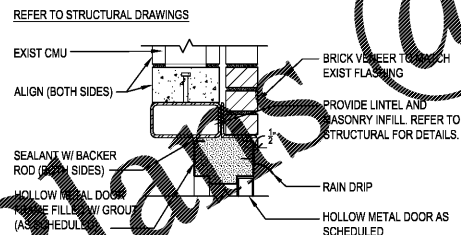
3 HEAD / JAMB DETAIL

A4 SCALE: 1 1/2" = 1'-0"



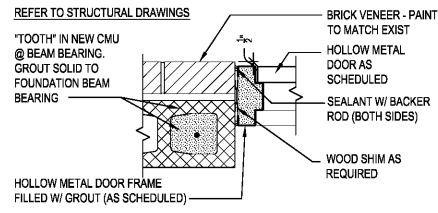
B SIGNAGE ELEVATION

A4 SCALE: NTS



4 HEAD DETAIL

A4 SCALE: 1 1/2" = 1'-0"



5 JAMB DETAIL

A4 SCALE: 1 1/2" = 1'-0"

FINISH SCHEDULE					
SPACES	FLOORS	BASES	WALLS	CEILING	NOTES
SALES	ENTRY CARPET TILE / POLISHED CONC	4" VINYL	GWB-PAINT YELLOW / FRP	ACT	1,2,4,5,6,9,11,12,14
STOCKROOM	CONCRETE	---	EXISTING / GWB	---	2,8,11,15
EMPLOYEE AREA	CONCRETE	---	GWB / PL WOOD	---	8,13
OFFICE	POLISHED CONC	4" VINYL	GWB-PAINT WHITE	---	2,3,6,8,10,12
TOILET	SHEET VINYL	6" SHEET VINYL	FRP	GWB	3,5,6,7,11
HALLWAY	POLISHED CONC	4" VINYL	GWB-PAINT WHITE / FRP	ACT	2,4,8,11,12
EXIST MEZZANINE	CONCRETE	---	EXISTING CMU	---	---

FINISH NOTES

- CARPET TILE: MANUFACTURED BY PORTICO SYSTEMS AND TENANT SUPPLIED / CONTRACTOR INSTALLED. INSTALL TILES QUARTER TURNED AND PER TENANT'S CRITERIA.
ENTRY TILE: DOMINATOR LP TILE - ANTHRACITE #1593. CONTRACTOR SHALL PREPARE FLOOR SURFACE AND COORDINATE CARPET INSTALLATION W/ CARPET INSTALLER.
- VINYL COVE BASE: COLOR - BLACK. VINYL BASE ONLY ON EXPOSED WALLS NOT COVERED BY GONDOLAS IN SALES AREA)
VINYL COVE BASE TO BE LOCATED IN STOCKROOM AT MOP SINK AND CABINET ONLY UON.
- SHEET VINYL: CLASSIC CORLON SERIES MANUFACTURED BY ARMSTRONG - CONNECTION CORLON "PORCELAIN" #88724 OR EQUAL.
SHEET VINYL BASE: INTEGRAL 3/8" RADIUS, 6" HIGH COVERED BASE W/ COVE STICK AND EXTRUDED ALUMINUM CAP TRIM.
- PROVIDE 2'-0" X 4'-0" CEILING TILE EQUAL TO ARMSTRONG "CORTEGA" MINABOARD #789, WHITE, IN A WHITE METAL GRID. (IN AREAS WITH SIGNIFICANT AIR PRESSURE DIFFERENTIALS PROVIDE RETENTION CLIPS TO RETAIN PANELS IN PLACE.)
- SLATWALL: 3/4" SLATWALL WITH WHITE MELAMINE FINISH. SEE MANUFACTURER'S DRAWINGS FOR INSTALLATION DETAILS.
- PAINT COLORS ARE AS FOLLOWS:
WHITE - SHERWIN WILLIAMS PRO 200 LATEX SEMI-GLOSS WHITE W/ B-1 PER GALLON.
YELLOW - BENJAMIN MOORE PRODUCT 274 "LEMON SORBET" #2019-60 (EGGSHELL FINISH)
FOREST GREEN - BENJAMIN MOORE PRODUCT 274 "FOREST GREEN" #2047-10 (EGGSHELL FINISH)
- PAINT TOILET ROOM EXTERIOR WALLS WHITE.
- EXIST CONCRETE FLOOR TO REMAIN. PATCH AND REPAIR AS REQUIRED TO PROVIDE SMOOTH SURFACE.
- SLATWALL IS TENANT SUPPLIED / CONTRACTOR INSTALLED. ALL OTHER FINISHES SHALL BE PROVIDED AND INSTALLED BY CONTRACTOR.
- PROVIDE PERFORMED COUNTER WITH WHITE HIGH PRESSURE LAMINATE FINISH. MOUNT TO WALLS. FLING CABINETS PROVIDED BY TENANT. SEE ENLARGED OFFICE PLAN AND OFFICE ELEVATION.
- F R P (FIBERGLASS REINFORCED PANEL); IN TOILET ROOM FROM FLOOR TO 8'-0" AFF SHALL BE WHITE* COLOR (IN STOCKROOM BEHIND MOP SINK AND UTILITY CABINET ONLY, IN HALLWAY BEHIND DRINKING FOUNTAIN ONLY.) FRP ON SALES FLOOR (WHERE NOTED ON PLANS/ELEVATIONS) SHALL BE ALMOND COLOR WITH 1" CHANNEL TRIM CAP AND "H" CHANNEL PANEL CONNECTORS.
- POLISHED CONCRETE FLOOR ON SALES FLOOR AND OFFICE. POLISHED CONCRETE FLOOR BY TENANT'S VENDOR. COORDINATE WITH TENANT.
- PAINT EMPLOYEE AREA WALLS TO 4'-0" AFF "FOREST GREEN".
- SALES AREA TO RECEIVE LEVEL 5 FINISH. PROVIDE FINISH TO 1'-0" BEHIND FREEZER / COOLER AND GONDOLA TO EVERYWHERE ELSE. CONTRACTOR SHALL ALLOW 72 HOUR CURE TIME.
- PAINT 6" WIDE BAND ON CONCRETE FLOOR AROUND PERIMETER OF STOCKROOM WITH 2 COAT BENJAMIN MOORE "FD BM WHITE" TOUGH SHIELD ACRYLIC GLOSS PAINT. PAINT BEFORE PRIOR TO PAINTING ANY YELLOW CLEAR FLOOR COAT AREAS.

DOOR SCHEDULE									
#	DOORS			DETAILS			FR	HDW NOTES	DOOR NOTES
	W	H	T	HEAD	JAMB	SILL			
100	3'-0"	6'-8"	1 3/4"	SOLID CORE WD	2/A4	2/A4	-	100A	5
200	PR 3'-0"	7'-0"	.063"	TEMP ALUM ALLOY	3/A4	-	-	200A	2,7,10,12
300	3'-0"	6'-8"	1 3/4"	SOLID CORE WD	2/A4	2/A4	-	300C	5,6,9
400	PR 3'-0"	7'-0"	1 3/4"	HOLLOW METAL	-	-	-	400A	4,5,8
401	3'-0"	7'-0"	1 3/4"	HOLLOW METAL	4/A4	5/A4	8/A4	400C	4,5,8,11
500	PR 3'-0"	7'-0"	1 3/4"	EXIST AUTOMATIC SWING	-	-	-	500D	1,3,13
600	3'-0"	7'-0"	1 3/4"	HOLLOW METAL	-	-	-	600C	3

GENERAL HARDWARE NOTES:

- THRESHOLDS AT EGRESS DOORS SHALL BE NO MORE THAN 1/2" (MAX) HEIGHT AFF.
- ALL DOOR HANDLES, PULLS, LATCHES, LOCKS AND OTHER OPERATING DEVICES SHALL BE INSTALLED 34" (MIN) TO 44" (MAX) AFF AND SHALL BE "SINGLE-HANDED" OPERABLE WITHOUT USE OF KEY OR SPECIAL KNOWLEDGE.
- WHERE EGRESS DOORS ARE USED IN PAIRS, THE UNLATCHING OF THE LEAF SHALL NOT REQUIRE MORE THAN ONE (1) OPERATION AS MENTIONED IN GENERAL HARDWARE NOTE #2 ABOVE.
- CONTROLS AND OPERATING MECHANISMS SHALL BE LEVER-TYPE (OR EQUAL) PROVIDING OPERATION WITH ONE HAND AND NOT REQUIRE TIGHT GRASPING, PINCHING, OR TWISTING OF THE WRIST.
- THE FORCE REQUIRED TO ACTIVATE CONTROLS OF INTERIOR HINGED DOORS SHALL BE NO GREATER THAN 5 POUNDS (22.2 N).
- DOORS EQUIPPED WITH CLOSERS SHALL BE ADJUSTED SO THAT THE SWEEP PERIOD FROM AN OPEN POSITION OF 70 DEGREES WILL TAKE AT LEAST 3 SECONDS TO MOVE TO A POINT 3" FROM THE LATCH, MEASURED FROM THE LEADING EDGE OF THE DOOR.

6 SILL AT REAR DOOR

A4 SCALE: 1" = 1'-0"

DOOR NOTES		HARDWARE NOTES	
1. PROVIDE A SIGN POSTED ON THE EGRESS SIDE, ON OR ADJACENT TO THE DOOR STATING "THIS DOOR TO REMAIN UNLOCKED WHEN BUILDING IS OCCUPIED." THE SIGN SHALL BE IN LETTERS 1" HIGH ON A CONTRASTING BACKGROUND.	2. NEW DOORS - SUPPLIED BY TENANT - ELIASON BI-SWING DOORS W/ WINDOW. EXIST DOORS - INSTALL ALUM COVER PLATE (SUPPLIED BY TENANT) ON EXIST DOORS TO REMAIN.	3. DOOR, FRAME AND HINGES ARE EXISTING. PROVIDE AND INSTALL ANY MISSING ITEMS OF HARDWARE PER HARDWARE NOTES.	4. PROVIDE (ONE) PEEP HOLE TO VIEW OUT. MOUNT @ 4'-3" AFF.
5. PAINT DOOR AND FRAME W/ WHITE SEMI-GLOSS ENAMEL PAINT.	6. INSTALL SIGNAGE PER SIGNAGE PER DETAIL #3/A4.	7. REINFORCE JAMB WITH WOOD BLOCKING. CONTRACTOR TO PROVIDE AND INSTALL DOOR SWEEP ON ALL EXTERIOR DOORS TO PREVENT WATER, LEAF AND DEBRIS INFILTRATION.	8. PROVIDE TENANT SUPPLIED COAT HOOK AT 48" AFF. ON BACK SIDE OF DOOR.
9. PAINT DOOR FRAME WHITE WITH SEMI-GLOSS ENAMEL PAINT. DOOR TO REMAIN WITH ORIGINAL FINISH.	10. PROVIDE SIGNAGE THAT READS "EMERGENCY EXIT ONLY."	11. PROVIDE SIGNAGE THAT READS "EMPLOYEES ONLY."	12. EXISTING AUTOMATIC SLIDING DOORS - PROVIDE ANY MISSING HARDWARE. CONTRACTOR TO VERIFY DOOR IS IN GOOD WORKING ORDER.

GENERAL HARDWARE NOTES:

- THRESHOLDS AT EGRESS DOORS SHALL BE NO MORE THAN 1/2" (MAX) HEIGHT AFF.
- ALL DOOR HANDLES, PULLS, LATCHES, LOCKS AND OTHER OPERATING DEVICES SHALL BE INSTALLED 34" (MIN) TO 44" (MAX) AFF AND SHALL BE "SINGLE-HANDED" OPERABLE WITHOUT USE OF KEY OR SPECIAL KNOWLEDGE.
- WHERE EGRESS DOORS ARE USED IN PAIRS, THE UNLATCHING OF THE LEAF SHALL NOT REQUIRE MORE THAN ONE (1) OPERATION AS MENTIONED IN GENERAL HARDWARE NOTE #2 ABOVE.
- CONTROLS AND OPERATING MECHANISMS SHALL BE LEVER-TYPE (OR EQUAL) PROVIDING OPERATION WITH ONE HAND AND NOT REQUIRE TIGHT GRASPING, PINCHING, OR TWISTING OF THE WRIST.
- THE FORCE REQUIRED TO ACTIVATE CONTROLS OF INTERIOR HINGED DOORS SHALL BE NO GREATER THAN 5 POUNDS (22.2 N).
- DOORS EQUIPPED WITH CLOSERS SHALL BE ADJUSTED SO THAT THE SWEEP PERIOD FROM AN OPEN POSITION OF 70 DEGREES WILL TAKE AT LEAST 3 SECONDS TO MOVE TO A POINT 3" FROM THE LATCH, MEASURED FROM THE LEADING EDGE OF THE DOOR.

RRMM ARCHITECTS, P.C.
Robert S Berz, Jr, Architect
Duane M Harver, Architect

1317 Executive Blvd, Suite 200
Chesapeake, VA 23320
(757)622-2828 / fax (757)622-6883

DOLLAR TREE
ROCKDALE PLAZA - DEAL # 11733
CONYERS, GA
DETAILS, ELEVATIONS AND SCHEDULES

project drawing sheet

A4