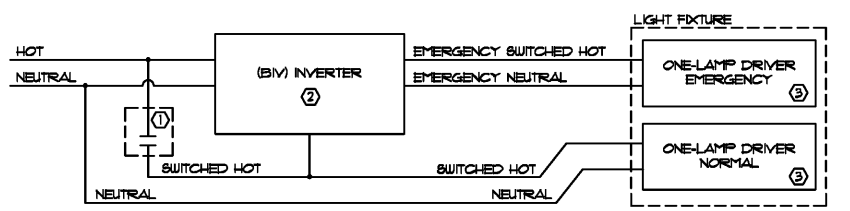


REV.	DATE	DESCRIPTION

PROJECT NUMBER: 603319
 DRAWN BY: DWB
 CHECKED BY: ADG
 ISSUE DATE: 6-6-19
 ISSUED FOR BIDS & PERMIT

SHEET TITLE:
 LIGHTING PLAN

SHEET NUMBER:
E-2.1

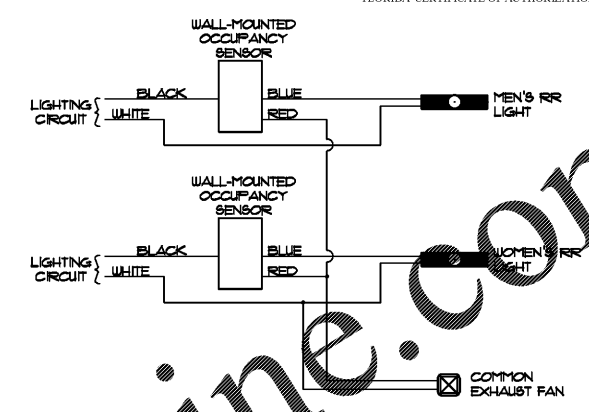


- DUAL VOLTAGE RATED, E.M.S. LVL1 CONTACTOR: CONNECT EITHER 120V OR 277V, NOT BOTH. SELECT PROPER VOLTAGE LEADS ON INPUT AND OUTPUT OF BIV.
- PROVIDED BY TENANT FOR INSTALLATION BY CONTRACTOR.
- THE NEUTRAL TO THE NORMAL LAMP AND THE NEUTRAL TO THE EMERGENCY LAMP MUST BE SEPARATE CONDUCTORS AND NOT CONNECTED TO EACH OTHER AT ANY POINT IN THE CIRCUIT, INCLUDING INSIDE THE FIXTURE.

2 SCHEMATIC DIAGRAM: INVERTER WIRING (BIV)
 E-2 SCALE: NONE FOR EMPLOYEE LIGHTING CIRCUIT

LIGHTING PLAN NOTES:

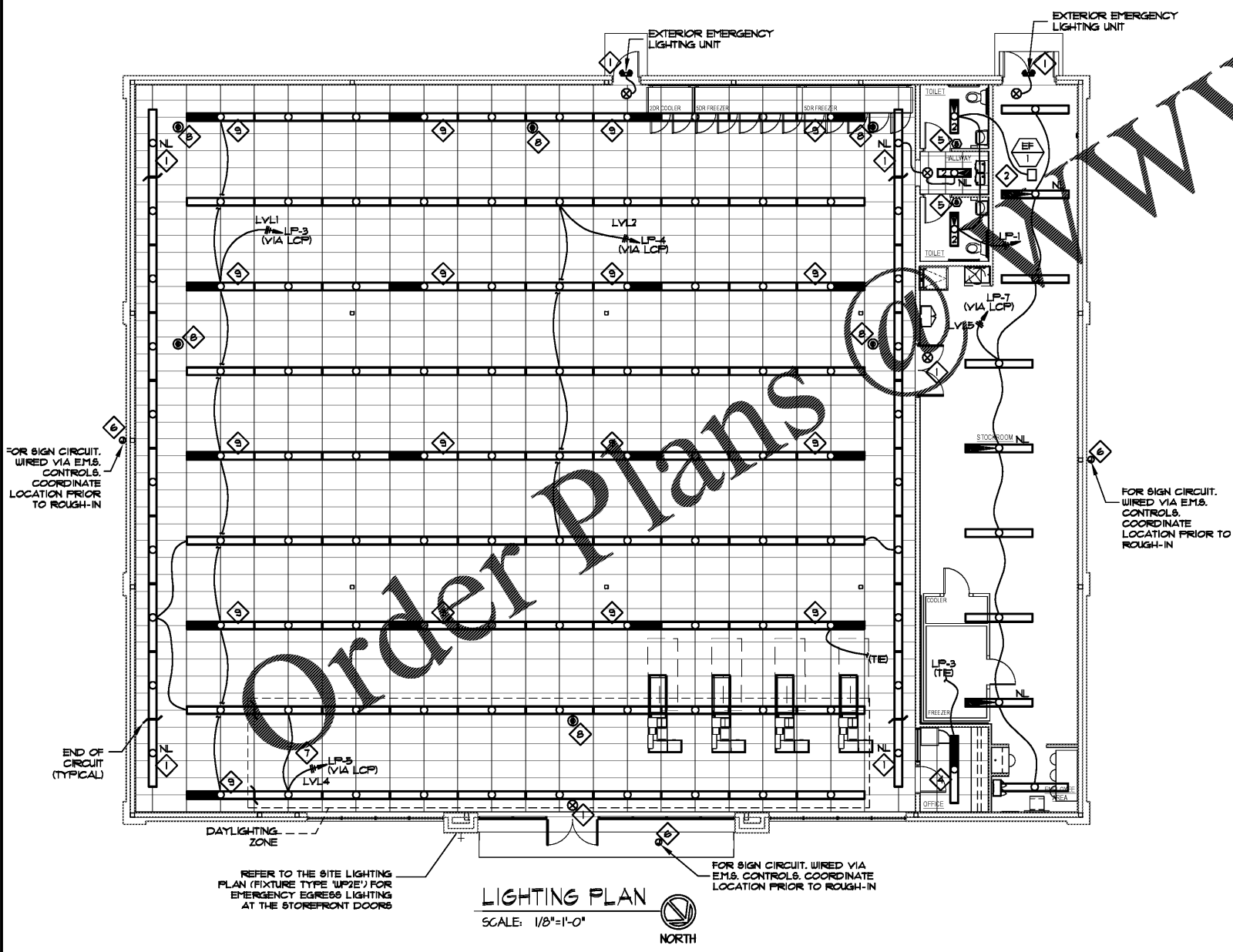
- ALL EXIT SIGNS, NIGHT LIGHTS, AND EXTERIOR EMERGENCY LIGHTS ARE ON PANEL "LP", CIRCUIT 2. WIRING NOT SHOWN FOR DRAWING CLARITY.
- SEE MECHANICAL DRAWINGS FOR EXACT LOCATION OF EXHAUST FAN.
- THE ELECTRICIAN SHALL INSTALL ADDITIONAL WIRE TIE SUPPORTS FROM THE CEILING GRID TO THE STRUCTURE ABOVE FOR SUPPORT OF THE LIGHT FIXTURES CLIPPED ON THE GRID.
- ALL LIGHTING ABOVE OFFICE SHALL BE ON "EMPLOYEE" LIGHTING CONTACTOR (LVL 0).
- TOILET ROOMS SHALL HAVE OCCUPANCY SENSORS INSTALLED AND CONNECTED AS SHOWN IN DETAIL #4 - SCHEMATIC DIAGRAM THIS SHEET. MOUNT ON WALL NEXT TO DOOR INSIDE RESTROOM. LIGHTS AND OCCUPANCY SENSORS TO BE WIRED INDEPENDENTLY OF THE ENERGY MANAGEMENT SYSTEM VIA CIRCUIT LP-1.
- ELECTRICAL CONTRACTOR SHALL COORDINATE FINAL JUNCTION BOX LOCATION WITH SIGN VENDOR. JUNCTION BOX NEEDS TO BE WITHIN FIVE FEET OF SIGN AND INCLUDE #8 WHIP FOR SIGN VENDOR TO MAKE FINAL CONNECTION. CIRCUITS RP-36, RP-38, & RP-40 ARE FOR BUILDING SIGNS.
- THE FIRST TWO ROWS OF LIGHT FIXTURES WILL BE PROVIDED WITH INDEPENDENT CONTROL FOR DAY-LIGHTING PER IECC. THESE CIRCUITS SHALL BE ROUTED THROUGH THE LCP FOR DAY-LIGHTING CONTROL.
- THE DUPLEX OUTLET TO BE MOUNTED IN CEILING TILE AND WIRED TO PANEL "RP", CIRCUIT 28. VERIFY LOCATION PRIOR TO INSTALLATION.
- NOTED FIXTURE SHALL HAVE ONE LAMP CIRCUITED TO INVERTER AND ONE LAMP CIRCUITED TO NORMAL POWER. CIRCUIT LP-3 SHALL BE USED FOR THESE FIXTURES AND SHALL BE ON LEVEL 1 CONTACTOR OF THE ENERGY MANAGEMENT SYSTEM. SEE INVERTER WIRING DIAGRAM ON THIS SHEET.



4 SCHEMATIC DIAGRAM: BATHROOM OCCUPANCY SENSOR
 SCALE: NONE

REFLECTED CEILING LEGEND

	+2'-0"X4'-0" ACOUSTICAL CEILING TILE AND GRID
	GWB - PAINT WHITE UNLESS OTHERWISE NOTED.
	DIFFUSER
	RETURN GRILLE
	DOME
	VENTILATION FAN
	CEILING HEIGHT (ABOVE FINISH FLOOR)
	POWER POLE
	OCCUPANCY SENSOR. SEE NOTE 5.
	CEILING RECEPTACLE, 120V, 20A



LIGHTING PLAN
 SCALE: 1/8"=1'-0"
 NORTH

ANY NEW LIGHTING WILL BE PROVIDED BY TENANT FOR TENANT'S CONTRACTOR INSTALLATION.

LIGHT FIXTURE SCHEDULE

FIXT. SYM.	LIGHT DESCRIPTION	VOLTS	WATTS	LAMP QTY, WATTS, TYPE	LAMPSE	MOUNTING	SCHEDULE NOTES
	EMERGENCY LIGHT (EXTERIOR - SEE NOTE 1)	SEE ELEC. PANEL	2	(2) 1 WATT LED	2	WALL OVER EXTERIOR DOOR	EMERGENCY LIGHT WITH REMOTE BATTERY
	EMERGENCY LIGHT (INTERIOR)	SEE ELEC. PANEL	2	(2) 1 WATT LED	2	SURFACE	EMERGENCY LIGHT UNIT
	EXIT LIGHT	SEE ELEC. PANEL	5	FURNISHED WITH FIXTURE	5	CEILING UNLESS OTHERWISE REQUIRED BY CODE	L.E.D. SINGLE-FACE EXIT SIGN W/EMERGENCY BATTERY NOTES: A, C, D, E, F, G
	8'-0" STRIP LIGHT	SEE ELEC. PANEL	36	(2) 18W LED	2	FURNISHED WITH FIXTURE	INTERIOR/EXTERIOR STRIP NOTES: A, C, D, E, F, G
	8'-0" STRIP LIGHT (EMERGENCY LIGHT)	SEE ELEC. PANEL	36	(2) 18W LED	2	FURNISHED WITH FIXTURE	EMERGENCY LIGHT ON INVERTER SYSTEM NOTES: A, C, D, E, F, G
	8'-0" STRIP LIGHT (EMERGENCY LIGHT)	SEE ELEC. PANEL	36	(2) 18W LED	2	FURNISHED WITH FIXTURE	EMERGENCY LIGHT WITH INTEGRAL BATTERY PACK NOTES: A, C, D, E, F, G
	4'-0" STRIP LIGHT	SEE ELEC. PANEL	18	(1) 18W LED	1	FURNISHED WITH FIXTURE	INTERIOR/EXTERIOR STRIP NOTES: A, C, D, E, F, G
	4'-0" STRIP LIGHT (EMERGENCY LIGHT)	SEE ELEC. PANEL	36	(2) 18W LED	2	FURNISHED WITH FIXTURE	EMERGENCY LIGHT WITH INTEGRAL BATTERY PACK NOTES: A, C, D, E, F, G

- LIGHT FIXTURE SCHEDULE NOTES:**
- DESIGNATED FIXTURES SHALL HAVE LED LAMPS.
 - CUT INSULATION (WHEN BATTERY IS USED) OR PROVIDE S.W.E.D. AROUND FIXTURE (WHEN BLOW-IN TYPE IS USED) TO KEEP INSULATION A MINIMUM OF 3" AWAY FROM FIXTURE.
 - ATTACH FIXTURE TO T-BAR PER IEC-485-35.
 - FIXTURE PROVIDED WITH DUAL VOLTAGE 120/277V POWER SUPPLY. VERIFY VOLTAGE FOR EACH FIXTURE LOCATION.
 - EMERGENCY FIXTURE WIRED FROM INVERTER.
 - LIGHT FIXTURES DENOTED BY "NL" SHALL REMAIN ON DURING NON-BUSINESS WORKING HOURS.
 - WITH NO FINISHED CEILING, LIGHT FIXTURES ABOVE THE SALES FLOOR SHALL BE SUSPENDED @ 12'-0" A.F.F. AND LIGHT FIXTURES ABOVE THE STOCKROOM SHALL BE SUSPENDED @ 10'-0" A.F.F.
 - FOR EXISTING FIXTURES THAT ARE TO REMAIN, THE CONTRACTOR SHALL REPLACE ALL EXISTING LAMPS WITH NEW LAMPS PROVIDED BY THE CONTRACTOR.
 - EXTERIOR EMERGENCY LIGHTING UNITS TO BE MOUNTED AT 7'-6" AFF FOR ALL SIDE AND REAR DOORS WHICH WILL PLACE THE LIGHT UNDER THE METAL DECK CANOPY.