

**DOOR SCHEDULE**

#	DOORS				DOOR EL	DETAILS			FIRE RATE	HDW NOTES	FRM EL	DOOR NOTES
	W	H	T	MATERIAL		HEAD	JAMB	SILL				
100	3'-0"	6'-8"	1 3/4"	SOLID CORE WD	D	1/A-3.1	1/A-3.1	-	100A	D	4	
200	PR 3'-0"	7'-0"	1 3/4"	HOLLOW METAL	C	3/A-3.1	3/A-3.1	-	1 HR	200A	E	2,8,8,12,16
300	3'-0"	6'-8"	1 3/4"	SOLID CORE WD	D	1/A-3.1	1/A-3.1	-	300C	D	4,5,11	
400	PR 3'-0"	7'-0"	1 3/4"	HOLLOW METAL	C	H1/A-2.0	J1/A-2.0	2/A-3.1	400A	C	3,4,10,14	
401	3'-0"	7'-0"	1 3/4"	HOLLOW METAL	B	H1/A-2.0	J1/A-2.0	2/A-3.1	400C	B	3,4,7,10,14	
500	PR 3'-0"	7'-0"	1 3/4"	STOREFRONT	A	H2/A-3.0	J4/A-3.0	T1/A-3.0	500A	A	1,9,10,13,15	

**DOOR NOTES**

- PROVIDE A SIGN POSTED ON THE EGRESS SIDE, ON OR ADJACENT TO THE DOOR STATING: "THIS DOOR TO REMAIN UNLOCKED WHEN BUILDING IS OCCUPIED." THE SIGN SHALL BE IN LETTERS 1" HIGH ON A CONTRASTING BACKGROUND.
- NEW DOORS - SUPPLIED BY DOLLAR TREE W/ PRE-INSTALLED BRUSHED ALUM COVER PLATE ON SALES AREA SIDE OF THE DOOR.
- PROVIDE (ONE) PEEP HOLE TO VIEW OUT. MOUNT @ 4'-3" AFF.
- PAINT DOOR AND FRAME W/ WHITE SEMI-GLOSS ENAMEL PAINT. FOR DOORS 400 & 401 PAINT INTERIOR WHITE AND SEE SHEET A-2.0 FOR EXTERIOR COLOR.
- INSTALL DOLLAR TREE SUPPLIED SIGNAGE PER DETAIL A/A-3.1.
- REINFORCE JAMBS WITH WOOD BLOCKING.
- PROVIDE SIGNAGE THAT READS "EMERGENCY EXIT ONLY."
- PROVIDE SIGNAGE THAT READS "EMPLOYEES ONLY."
- PROVIDE HANDICAPPED ACCESSIBILITY DECAL. SEE DETAIL A/A-2.6.
- CONTRACTOR TO PROVIDE AND INSTALL DOOR SWEEP ON ALL EXTERIOR DOORS TO PREVENT WATER, WIND AND DEBRIS INFILTRATION.
- PROVIDE COAT HOOK AT 48" AFF. ON BACK SIDE OF DOOR.
- PAINT DOOR FRAME WHITE WITH SEMI-GLOSS ENAMEL PAINT. DOOR TO REMAIN WITH ORIGINAL FINISH.
- PROVIDE STOREFRONT DOORS, FRAMING AND GLAZING TO MEET MIAMI-DADE COUNTY NOA #17-1017.13. CONTRACTOR SHALL OBTAIN PRODUCT APPROVAL DOCUMENTS FOR INSTALLATION REQUIREMENTS. REFER TO NEW WORK NOTE # XXXX
- DOOR, FRAME AND HARDWARE SUPPLIED BY TENANT'S VENDOR SHALL MEET MIAMI-DADE COUNTY PRODUCT APPROVAL 18-0212.10 CONTRACTOR SHALL OBTAIN PRODUCT APPROVAL DOCUMENTS FOR INSTALLATION REQUIREMENTS. SUBMIT SHOP DRAWINGS WITH NOA CERTIFICATION TO THE ARCHITECT AND CITY FOR APPROVAL AS REQUIRED
- PROVIDE "R" MALTESE CROSS SIGNAGE. SEE DETAIL A/A-2.6.
- PROVIDE "C" LABEL DOOR AND FRAME PER UNDERWRITERS LABORATORIES INC.

**GENERAL HARDWARE NOTES:**

- THRESHOLDS AT EGRESS DOORS SHALL BE NO MORE THAN 1/2" (MAX) HEIGHT AFF.
- ALL DOOR HANDLES, PULLS, LATCHES, LOCKS AND OTHER OPERATING DEVICES SHALL BE INSTALLED 34" (MIN) TO 48" (MAX) AFF AND SHALL BE "SINGLE-HANDED" OPERABLE WITHOUT USE OF KEY OR SPECIAL KNOWLEDGE.
- WHERE EGRESS DOORS ARE USED IN PAIRS, THE UNLATCHING OF THE LEAF SHALL NOT REQUIRE MORE THAN ONE (1) OPERATION AS MENTIONED IN GENERAL HARDWARE NOTE #2 ABOVE.
- CONTROLS AND OPERATING MECHANISMS SHALL BE LEVER-TYPE (OR EQUAL) PROVIDING OPERATION WITH ONE HAND AND NOT REQUIRE TIGHT GRASPING, PINCHING, OR TWISTING OF THE WRIST.
- THE FORCE REQUIRED TO ACTIVATE CONTROLS OF INTERIOR HINGED DOORS SHALL BE NO GREATER THAN 5 POUNDS (22.2 N).
- DOORS EQUIPPED WITH CLOSERS SHALL BE ADJUSTED SO THAT THE SWEEP PERIOD FROM AN OPEN POSITION OF 70 DEGREES WILL TAKE AT LEAST 3 SECONDS TO MOVE TO A POINT 3" FROM THE LATCH, MEASURED FROM THE LEADING EDGE OF THE DOOR.
- REQUIRED EXIT DOORS SHALL BE OPENABLE FROM THE INSIDE WITHOUT THE USE OF A KEY, TOOL, SPECIAL KNOWLEDGE OR EFFORT. MANUALLY OPERATED FLUSH BOLTS ARE PROHIBITED. ALL HARDWARE MUST BE DIRECT ACTING REQUIRING NO MORE THAN ONE OPERATION. DOUBLE CYLINDER DEAD BOLTS, REQUIRING A KEY FOR OPERATION ON BOTH SIDE, ARE PROHIBITED ON REQUIRED MEANS OF EGRESS DOORS UNLESS THE LOCKING DEVICE IS PROVIDED WITH A KEY WHICH CANNOT BE REMOVED WHEN THE DOOR IS LOCKED FROM THE INSIDE.

**HARDWARE NOTES**

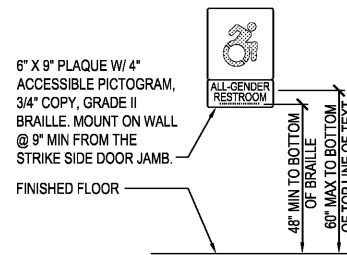
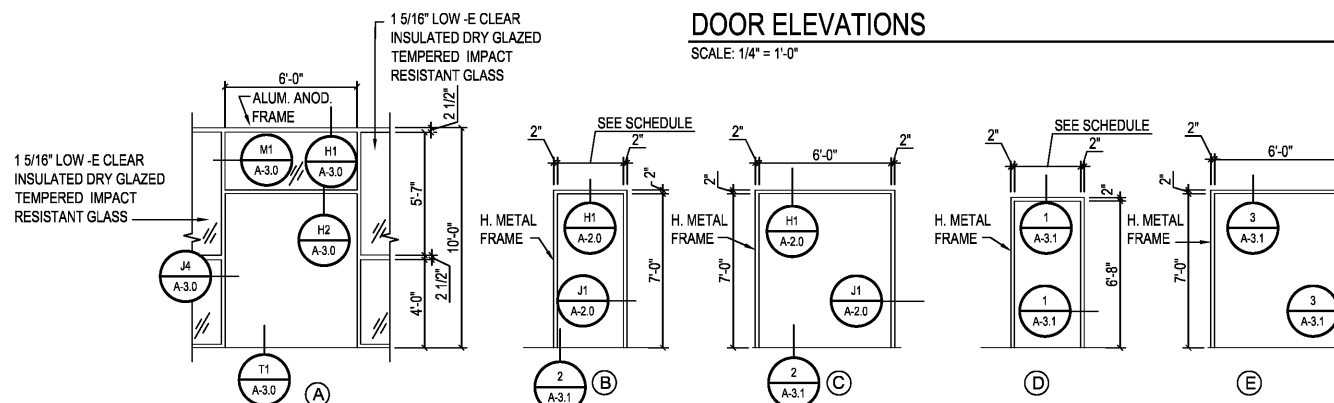
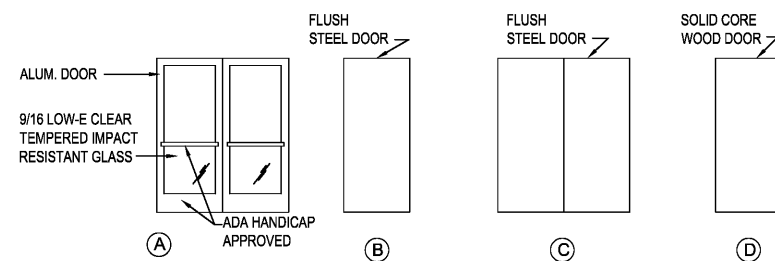
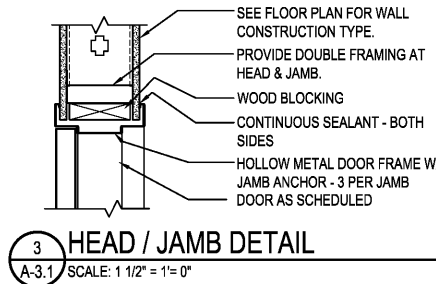
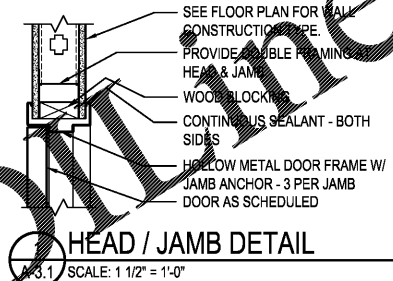
- HDW # 100A**
- 1 1/2 PAIR HINGES: STANDARD WEIGHT
  - 1 MECHANICAL PUSH BUTTON LOCKSET WITH LEVER HANDLE
  - 1 CLOSER
  - 1 FLOOR STOP
- HDW # 200A**
- 3 PAIR HINGES: 4 1/2" HEAVY WEIGHT, BALL BEARING PINS
  - 2 CLOSERS
  - 1 COORDINATOR
  - 1 PUSH - PULL LATCH SET
  - 1 SET AUTOMATIC FLUSH BOLTS (ON INACTIVE LEAF)
  - 1 DUSTPROOF STRIKE
  - 1 STEEL ASTRAGAL
  - 1 THRESHOLD (1/4" MAXIMUM HEIGHT)
  - 1 SMOKE SEAL
- HDW # 300C**
- 1 1/2 PAIR HINGES: STANDARD WEIGHT
  - 1 PRIVACY SET WITH LEVER HANDLE
  - 1 CLOSER (FLOOR/WALL STOP IF SHIPPED WITH HARDWARE)
- HDW # 400A**
- 3 PAIR HINGES: 4 1/2" HEAVY WEIGHT, NON-REMOVABLE PINS
  - 1 NON-ALARMED, NON-KEYED PANIC BAR DEVICE: WITH STAND ALONE ALARM - REFER TO DOOR ALARM MOUNTING DETAIL
  - 2 OVERHEAD HOLDERS/STOPS (MAX 90°)
  - 2 FLUSH BOLTS (ON INACTIVE LEAF)
  - 1 DUST PROOF STRIKE
  - 1 PEEP HOLE
  - 1 ALUM THRESHOLD (1/2" MAX HEIGHT)
  - 2 SWEEPS
  - 1 WEATHER STRIP
  - 1 RAIN DRIP
  - 1 DOOR STOP
  - 1 ASTRAGAL
- HDW # 400C**
- 1 1/2 PAIR HINGES: STANDARD WEIGHT, NON-REMOVABLE PINS
  - 1 NON-ALARMED, NON-KEYED PANIC BAR DEVICE: WITH STAND ALONE ALARM - REFER TO DOOR ALARM MOUNTING DETAIL.
  - 1 CLOSER WITH STOP ARM
  - 1 PEEP HOLE
  - 1 ALUM THRESHOLD (1/2" MAX HEIGHT)
  - 1 SWEEP
  - 1 WEATHER STRIP
  - 1 RAIN DRIP
- HDW # 500A**
- HINGES PER STOREFRONT MANUFACTURER (BY GENERAL CONTRACTOR)
  - 2 CLOSERS WITH STOP ARM AND DROPPING PLATE
  - 2 PUSH PLATES (BY GENERAL CONTRACTOR)
  - 2 PULL HANDLES (BY GENERAL CONTRACTOR)
  - 1 KABA CYLINDER (SUPPLIED BY DOLLAR TREE)
  - 1 COMMERCIAL GRADE DEAD LOCK W/ THUMB TURN ON SALES SIDE (SUPPLIED BY GENERAL CONTRACTOR)
  - INACTIVE LEAF - KAWNEER CONTROLLER 2 POINT LOCKING SYSTEM
- NOTE: CONTRACTOR SHALL VERIFY CLOSER DOES NOT HAVE A HOLD OPEN FEATURE. IF CLOSER DOES, THE CONTRACTOR SHALL REPLACE WITH NEW CLOSER.

**FINISH SCHEDULE**

SPACES	FLOORS	BASES	WALLS	CEILING	NOTES
SALES	POLISHED CONCRETE ENTRY CARPET TILE	4" VINYL	GWB-PAINT YELLOW / FRP	ACT	1,2,3,4,5,7,9,11,13
STOCKROOM	CONCRETE	4" VINYL	GWB	--	2,9
EMPLOYEE AREA	CONCRETE	-	GWB / PLYWOOD	--	5,12
OFFICE	POLISHED CONCRETE	4" VINYL	GWB-PAINT WHITE	--	2,3,4,5,7,8
TOILET	SHEET VINYL	6" SHEET VINYL	FRP	GWB-PAINT WHITE	4,5,6,7,9,10
HALLWAY	POLISHED CONCRETE	4" VINYL	GWB-PAINT WHITE / FRP	ACT	2,3,5,9,11

**FINISH NOTES**

- CARPET TILE: MANUFACTURED BY INTERFACE FLOORING SYSTEMS AND SUPPLIED BY DOLLAR TREE. INSTALL TILES QUARTER TURNED AND PER DOLLAR TREE'S CRITERIA. ENTRY TILE: DECO RIB, STYLE #678609900. CONTRACTOR SHALL PREPARE FLOOR SURFACE AND COORDINATE CARPET INSTALLATION W/ CARPET INSTALLER.
- VINYL COVE BASE: COLOR - BLACK. (VINYL BASE ONLY ON EXPOSED WALLS NOT COVERED BY GONDOLAS IN SALES AREA.) VINYL COVE BASE TO BE LOCATED IN STOCKROOM AT MOP SINK AND CABINET ONLY UON.
- POLISHED CONCRETE FLOOR ON SALES FLOOR AND OFFICE. POLISHED CONCRETE FLOOR BY DOLLAR TREE'S VENDOR. COORDINATE WITH DOLLAR TREE.
- SLATWALL: 3/4" SLATWALL WITH WHITE MELAMINE FINISH. SEE MANUFACTURER'S DRAWINGS FOR INSTALLATION DETAILS.
- PAINT COLORS ARE AS FOLLOWS:
  - WHITE - SHERWIN WILLIAMS PRO 200 LATEX SEMI-GLOSS WHITE W/ B-1 PER GALLON.
  - YELLOW - BENJAMIN MOORE PRODUCT 274 "LEMON SORBET" #2019-60 (EGGSHELL FINISH)
  - FOREST GREEN - BENJAMIN MOORE PRODUCT 274 "FOREST GREEN" #2047-10 (EGGSHELL FINISH)
  - GRAY - "ROCKY RIVER" #SW6215 SHERWIN WILLIAMS (SEMI GLOSS)
- PAINT TOILET ROOM EXTERIOR WALLS WHITE.
- SLATWALL SHALL BE PROVIDED BY DOLLAR TREE AND INSTALLED BY CONTRACTOR. ALL OTHER FINISHES SHALL BE PROVIDED AND INSTALLED BY CONTRACTOR.
- PROVIDE PREFORMED COUNTER WITH WHITE HIGH PRESSURE LAMINATE FINISH. MOUNT TO WALLS. FILING CABINETS PROVIDED BY DOLLAR TREE. SEE ENLARGED OFFICE PLAN AND OFFICE ELEVATION.
- F R P (FIBERGLASS REINFORCED PANEL): IN TOILET ROOM FROM 6 1/2" AFF TO 8'-0" AFF SHALL BE WHITE" COLOR. STOCKROOM BEHIND MOP SINK / UTILITY CABINET ONLY. HALLWAY BEHIND DRINKING FOUNTAIN ONLY FRP GOES FROM FINISHED FLOOR.) FRP ON SALES FLOOR WHERE NOTED ON PLANS/ELEVATIONS) SHALL BE 1/4" AND COLOR WITH "J" CHANNEL TRIM CAP AND "H" CHANNEL PANEL CONNECTORS.
- SHEET VINYL: CLASSIC CORLON SERIES. MANUFACTURED BY AR. STRONG CONNECTION CORLON "PORCELAIN" #38724 OR EQUAL. SHEET VINYL BASE: BY INTEGRAL 3/8" RADIUS, 6" HIGH COVE STICK AND EXTRUDED ALUMINUM CAP
- PROVIDE 2'-0" X 4'-0" CEILING TILE BY ARMSTRONG "CORTEGA" SQUARE LAY- IN #769, WHITE, IN A WHITE METAL GRID. (IN AREAS WITH SIGNIFICANT AIR PRESSURE DIFFERENTIALS PROVIDE RETENTION CLIPS TO RETAIN PANELS IN PLACE.)
- PAINT EMPLOYEE AREA WALLS TO 4'-0" AFF "FOREST GREEN".
- SALES AREA TO RECEIVE LEVEL 5 FINISH. PROVIDE FINISH TO 1'-0" BEHIND FREEZER / COOLER AND GONDOLA. TO FINISHED FLOOR EVERYWHERE ELSE. CONTRACTOR SHALL ALLOW 72 HOUR CURE TIME.



**A SIGNAGE ELEVATIONS**  
A-3.1 SCALE: NTS

**DOOR FRAME ELEVATIONS**  
SCALE: 1/4" = 1'-0"

TENNESSEE 06/2019 E30-44 AM 11/20/19 10:09:00\_DOLLARTREE0644Architectural Sheet0644\_A-3\_1.dwg

Order Plans

**DOLLAR TREE**  
AND ASSOCIATES, INC.  
3501 SPRING HILL AVENUE | P.O. BOX 1000 | COCOEE, FL 32909 | 205-944-7070

**DOLLAR TREE**  
OCOCHEE, FLORIDA

REV.	DATE	BY	DESCRIPTION

PROJECT NUMBER: 19109-44  
DRAWN BY: RWH/TEH  
CHECKED BY: LGS  
ISSUE DATE: 06/06/2019  
ISSUED FOR BIDS AND PERMITS

STATE OF FLORIDA  
LINDA G. SHARP  
REGISTERED ARCHITECT  
AR99215  
06/06/2019

SHEET TITLE:  
INTERIOR DOOR & FINISH  
SCHEDULE & DETAILS

SHEET NUMBER:  
**A-3.1**