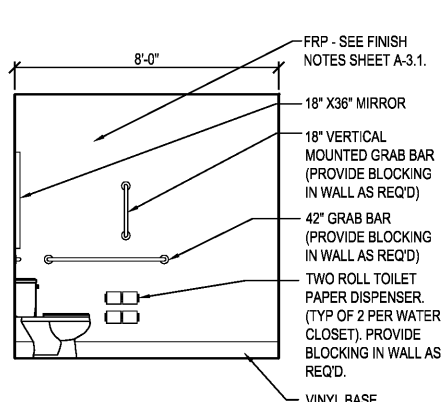
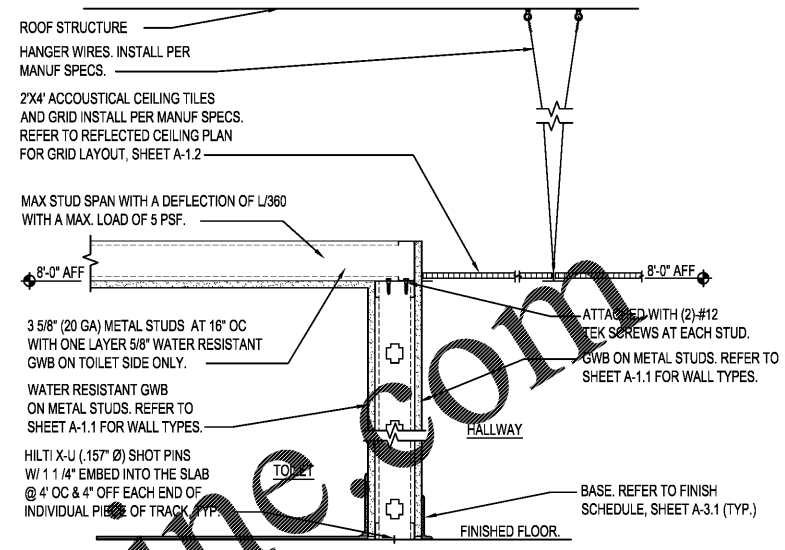


A TOILET ELEVATION
A-2.4 SCALE: 3/8" = 1'-0"

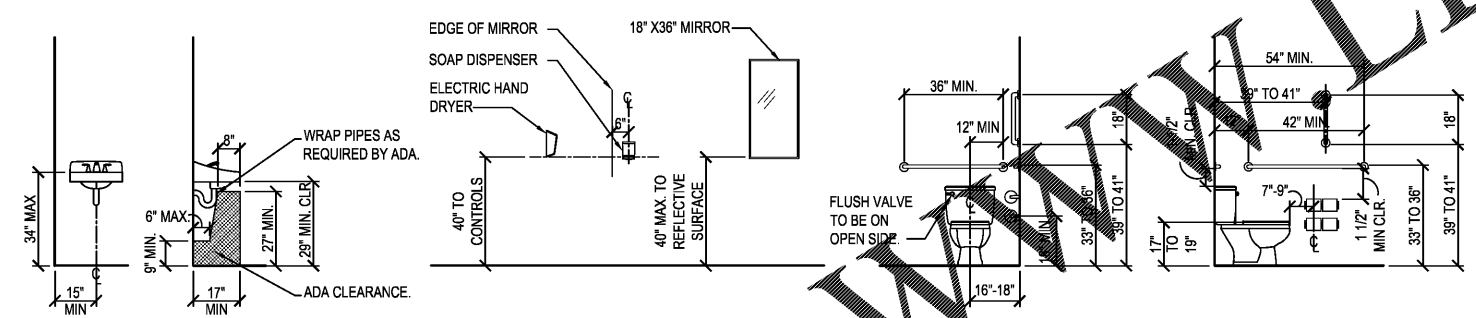


B TOILET ELEVATION
A-2.4 SCALE: 3/8" = 1'-0"

NOTE:
TOILET ACCESSORIES ARE DOLLAR TREE SUPPLIED - INCLUDING GRAB BARS, TOILET PAPER DISPENSER, MIRROR, HAND DRYER, AND SOAP DISPENSER.
THE ELECTRIC HAND DRYER WILL NOT EXTEND MORE THAN 4" FROM THE WALL ON WHICH IT IS MOUNTED UNLESS IT HAS A LEADING EDGE AT OR BELOW 27" ABOVE FINISHED FLOOR.
FLUSH CONTROLS SHALL BE LOCATED ON THE OPEN SIDE OF THE WATER CLOSET.
CONTRACTOR SHALL COMPLY WITH PLANS AND HANDICAPPED CODES AND LAWS. CONTRACTOR SHALL VERIFY COMPLIANCE TO FLOOR PLAN, ENLARGED PLANS AND ELEVATIONS THIS SET. NOTIFY CONSTRUCTION PM WITH ANY DISCREPANCIES.

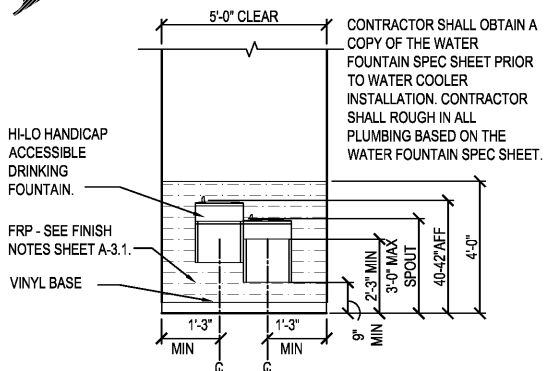


CEILING DETAIL @ TOILET / HALLWAY
A-2.4 SCALE: 1/2" = 1'-0"

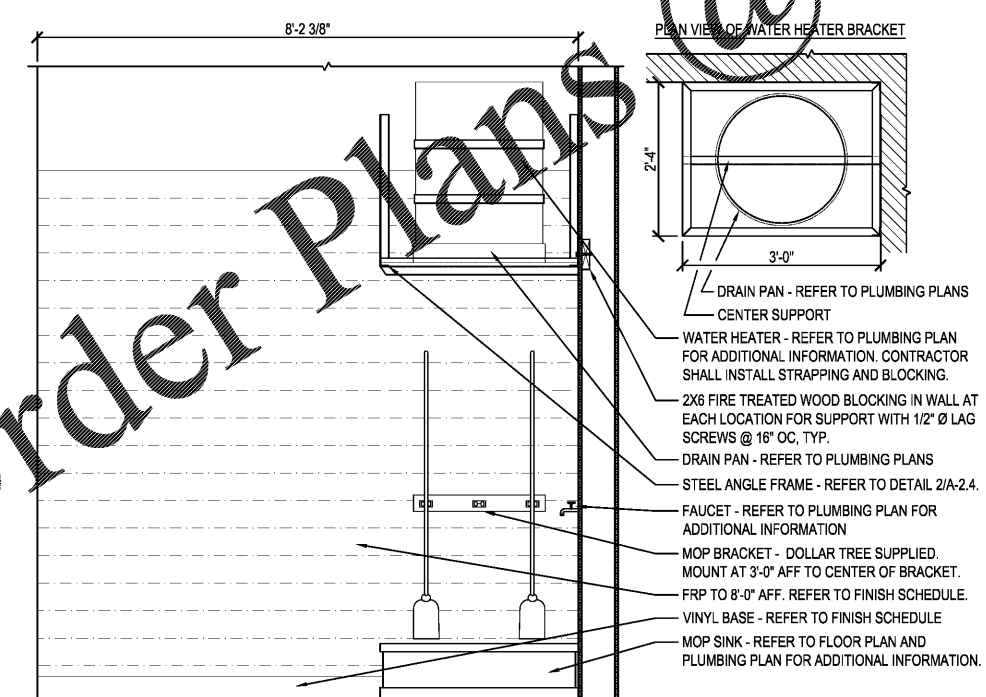


C TYPICAL ACCESSIBILITY CLEARANCES
A-2.4 SCALE: 3/8" = 1'-0"

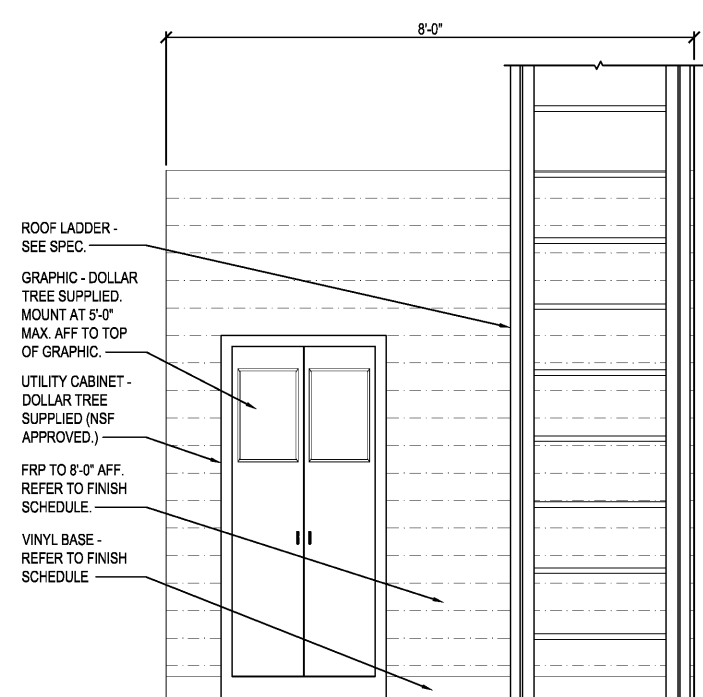
NOTE: PROVIDE BLOCKING IN WALL FOR ALL WALL HUNG FIXTURES.



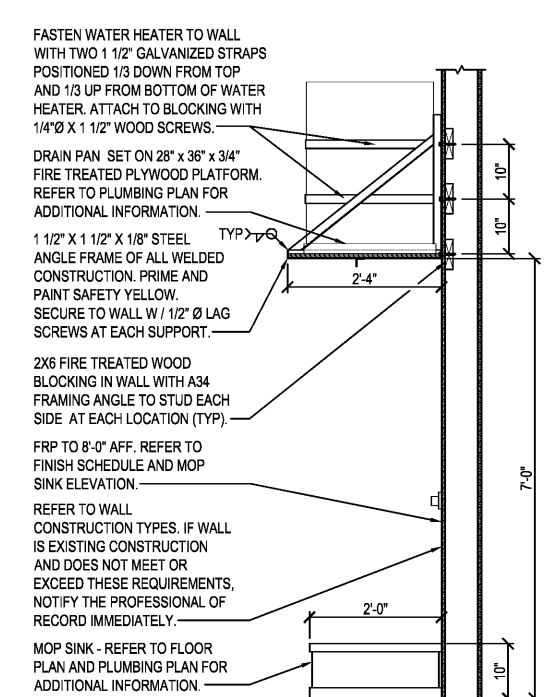
D DRINKING FOUNTAIN ELEVATION
A-2.4 SCALE: 3/8" = 1'-0"



E MOP SINK ELEVATION
A-2.4 SCALE: 3/4" = 1'-0"



F UTILITY CABINET ELEVATION
A-2.4 SCALE: 3/4" = 1'-0"



2 WATER HEATER MOUNTING DETAIL
A-2.4 SCALE: 3/4" = 1'-0"

Order Plans

THEINSECT 6/20/19 5:50:20 AM H:\2019\19109-00_DOLLARTREE\044\Architectural\Sheet\044_A-2.dwg

REV. DATE	DESCRIPTION

PROJECT NUMBER: 19109-04
 DRAWN BY: RWH/TEH
 CHECKED BY: LGS
 ISSUE DATE: 06/06/2019
 ISSUED FOR BIDS AND PERMITS

