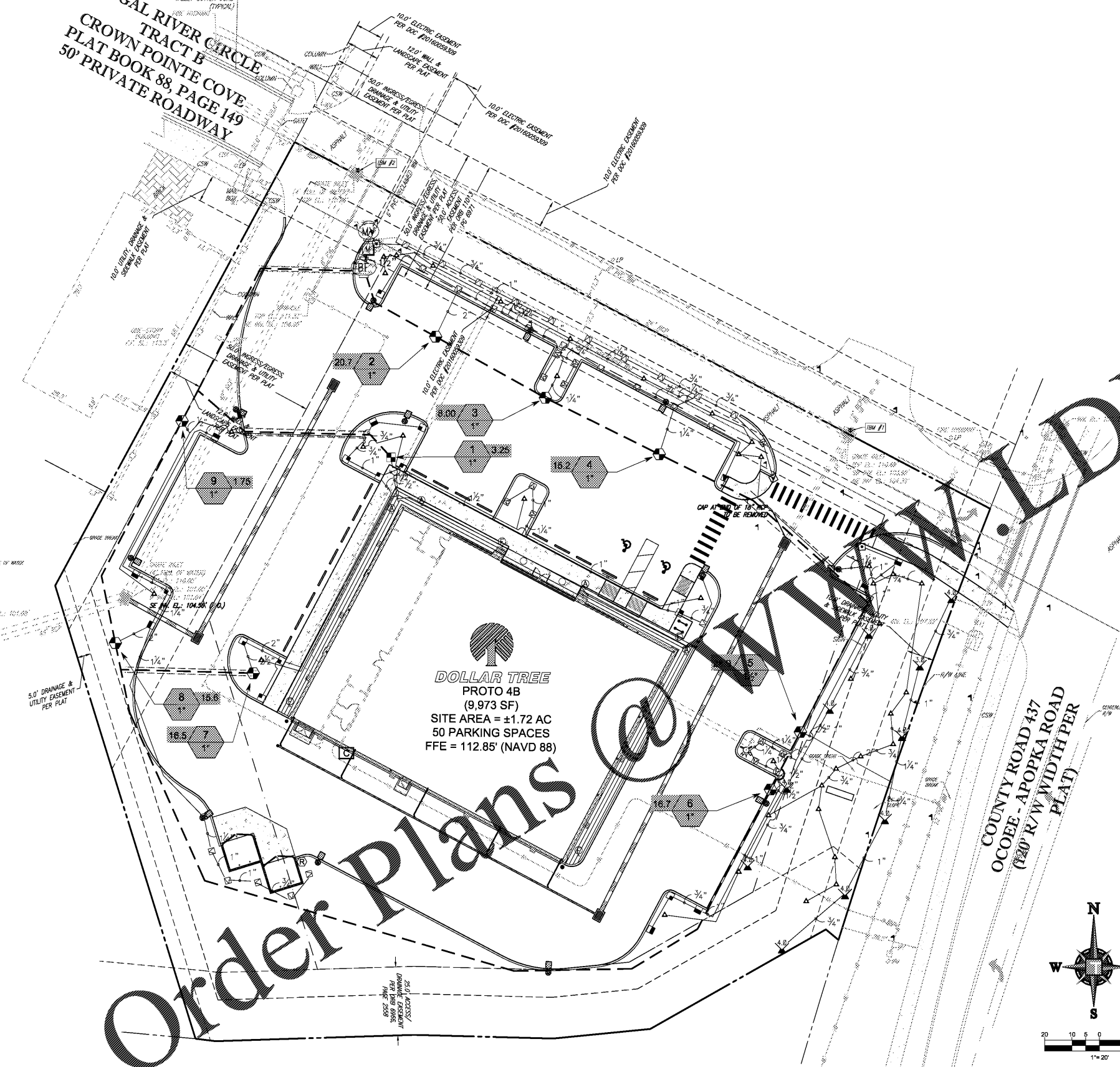


LEGAL RIVER CIRCLE  
 TRACT B  
 CROWN POINTE COVE  
 PLAT BOOK 88, PAGE 149  
 50' PRIVATE ROADWAY



**DOLLAR TREE  
 PROTO 4B**  
 (9,973 SF)  
 SITE AREA = ±1.72 AC  
 50 PARKING SPACES  
 FFE = 112.85' (NAVD 88)

**IRRIGATION SCHEDULE**

SYMBOL	MANUFACTURER/MODEL/DESCRIPTION	QTY	PSI	GPM	RADIUS
[Symbol]	Rain Bird 1806-PRS 15 Strip Series Turf Spray 6" pop-up with pressure regulator.	27	30		
[Symbol]	Rain Bird 1806-PRS 15 Strip Series Turf Spray 6" pop-up with pressure regulator.	12	30		
[Symbol]	Rain Bird 1806-PRS 15 Series MPR Turf Spray 6" pop-up with pressure regulator.	21	30		
[Symbol]	Rain Bird 1806-PRS ADJ Turf Spray 6" pop-up with pressure regulator.	3	30		
[Symbol]	Rain Bird 1804-1400 Flood Flood Bubbler 4" pop-up	39	40		
SYMBOL	MANUFACTURER/MODEL/DESCRIPTION	QTY	PSI	GPM	RADIUS
[Symbol]	Rain Bird 3500-S Shrub Rotor, adjustable and full circle	1	25	2.17	29"
[Symbol]	Rain Bird 3500-S Shrub Rotor, adjustable and full circle	9	25	2.97	31"
SYMBOL	MANUFACTURER/MODEL/DESCRIPTION	QTY			
[Symbol]	Rain Bird KCZ-100-PRB-R Low Drip Control Kit for Commercial Applications. Purple Cap designates for Reclaimed Water, Non-Potable Use. 1" PESBR Valve and 1" Pressure Regulating 40psi Basket Filter. 0.3gpm to 20gpm.	1			
[Symbol]	Rain Bird MDCFCAP Dripline Flush Valve cap in compression fitting coupler.	4			
[Symbol]	Rain Bird AR Valve Kit 1" Air Relief Valve kit with 6" drip valve box.	4			
[Symbol]	Area to Receive Dripline Netafim OBWRAM-09-24 Bioline Pressure Compensating Landscape Dripline w/Purple Color Tubing for Non-Potable Water Applications. 0.9 GPH emitters at 24" O.C. Dripline laterals spaced at 24" apart, with emitters offset for triangular pattern. Reclaimed Water Use Only.	647.9 l.f.			
SYMBOL	MANUFACTURER/MODEL/DESCRIPTION	QTY			
[Symbol]	Rain Bird PESBR-PRS-D 1", 1-1/2", and 2" Durable Chlorine-Resistant Valves for Reclaimed Water Applications. With Scrubber Mechanism Technology, Purple Flow Control Handle, and Pressure Regulator Module.	8			
[Symbol]	Rain Bird ESP12LXMEF-LXMM 12 Station Commercial Controller. Powder-coated Metal Cabinet. Flow Sensing	1			
[Symbol]	Rain Bird RSD-BEx Rain Sensor, with bracket, extension wire	1			
[Symbol]	Water Meter 1" 1" METER OFF OF 6" RECLAIM WATER LINE	1			
[Symbol]	Irrigation Lateral Line: PVC Class 160 SDR 26	2,706 l.f.			
[Symbol]	Irrigation Mainline: PVC Class 200 SDR 21	971.3 l.f.			
[Symbol]	Pipe Sleeve: PVC Schedule 80 Typical pipe sleeve for irrigation pipe. Pipe sleeve size shall allow for irrigation piping and their related couplings to easily slide through sleeving material. Extend sleeves 18 inches beyond edges of paving or construction.	166.9 l.f.			

**IRRIGATION NOTES**

- SOURCE IS FROM A RECLAIM WATER LINE. ALL MAINLINES, LATERALS, VALVES, HEADS, ETC., SHALL HAVE PURPLE CAPS, HANDLES, ETC. TO INDICATE RECLAIM WATER USE.
- THIS PROJECT, INCLUDING BOTH HORIZONTAL AND VERTICAL CONSTRUCTION, SHALL INCORPORATE WATERSENSE (TM) PLUMBING FIXTURES AND ENERGY STAR (TM) APPLIANCES AS REQUIRED BY CHAPTER 175 OF THE CITY OF OCOEE'S CODE OF ORDINANCES.
- DEVELOPER/CONTRACTOR SHALL COORDINATE WITH UTILITIES DEPARTMENT FOR WATER CONSERVATION INSPECTION OF PLUMBING AND IRRIGATION SYSTEM BY CALLING 407-905-3159.

- NOTES:**
- PLANS AND DETAILS ARE IN ACCORDANCE WITH THE CITY OF OCOEE PLAN STANDARDS AND PROVISIONS AND THE CITY OF OCOEE LAND DEVELOPMENT CODE.
  - CROSS ACCESS WITH EASTERN PARCEL PROVIDED.
  - NO WETLANDS ON SITE.
  - WATER, STORM, SANITARY, ROADS AND ALL OTHER SITE AMENITIES TO BE PRIVATELY OWNED AND OPERATED.
  - STORMWATER MANAGEMENT: EXISTING MASTER STORMWATER CONSISTS OF OFF-SITE WET RETENTION WITH ONSITE PRE-TREATMENT REQUIRED.
  - FIRE PROTECTION: SITE WILL BE PROTECTED VIA EXISTING FIRE HYDRANTS.
  - ALL RADI ARE TO FACE OF CURB AND 3' UNLESS OTHERWISE NOTED.

 4950 W. KENNEDY BLVD, SUITE 600 TAMPA, FLORIDA 33609 Phone: (813) 378-4100 Fax: (813) 378-4040 ThomasEngineeringGroup.com	01/17/2019 AG DRN CHK	 MICHAEL D. GROSSWIRTH REGISTERED LANDSCAPE ARCHITECT STATE OF FLORIDA LICENSE NO. 1338871 EXPIRES 12/31/2022 FLORIDA BUSINESS AND PROFESSIONAL REGULATION BOARD AUTH. NO. 27528	 OCOEE, FL <b>IRRIGATION PLAN</b> PROJ. NO. F180066 DWG. NO. L-3.0
	DOCUMENT CONTROL	THE SEAL APPEARING ON THIS DOCUMENT WAS AUTHORIZED BY MICHAEL D. GROSSWIRTH, LA6666871 ON 2019-06-05	