

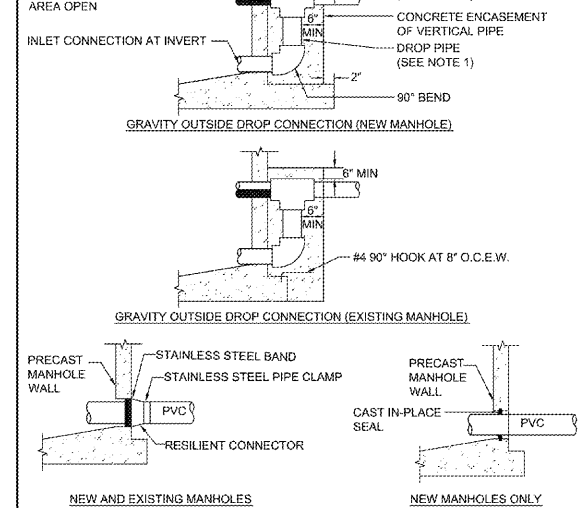
- NOTES:**
- This detail is for cast in place standard and receiving sanitary sewer manholes.
 - Sewer main sizes connecting to the manhole shall range from 6" to 24" in diameter and not less than 2" from floor of bottom casing. All other sizes shall require separate design and approval.
 - All manholes where any invert into the manhole exceeds 18" shall require a drop connection (See detail UT201).
 - Manhole connecting and cover shall be eccentric configured. Cone transition shall range from 18" to 36". Concentric configuration shall require written approval by the City.
 - Receiving, foreman connected and drop manholes shall be continuously lined with Green Monster TM liner at 90 to 110 mil thickness or approved equal.
 - Bottom casing shall be monolithic with first riser.
 - Riser between top cone and bottom casing shall be no shorter in height than 80".
 - Manhole cover to be set 1/4" above and matching slope pavement and should be set at plan grade unopened areas.
 - All seams from structure joints, pipe connections and ring shall be WrapSealed.

DETAIL NO.	CITY OF OCOEE
UT200	CONSTRUCTION DETAILS
	Sanitary Sewer Manhole
DATE: Feb. 2016	SCALE: n/a

ORANGE COUNTY UTILITIES STANDARDS AND CONSTRUCTION SPECIFICATIONS MANUAL

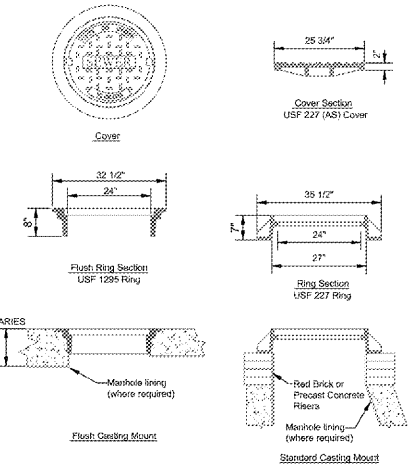
APPENDIX A STANDARD DRAWINGS GENERAL

DATE: February 11, 2011 GRAVITY MANHOLE CONNECTION FIGURE A302



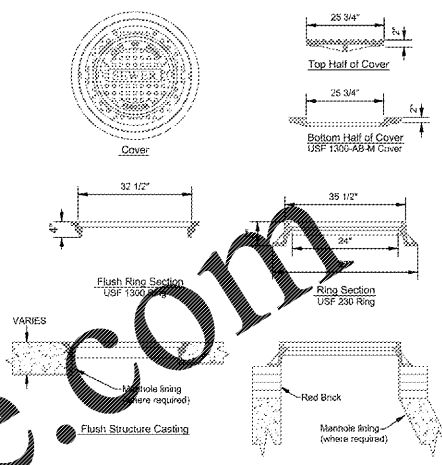
- NOTES:**
- DROP PIPE AND FITTINGS SHALL BE OF EQUAL SIZE AND MATERIAL AS THE INFLUENT SEWER.
 - AN OUTSIDE DROP CONNECTION SHALL BE REQUIRED FOR ALL INFLUENT LINES WHICH HAVE AN INVERT 2' OR MORE ABOVE THE MANHOLE INVERT.
 - CONTRACTOR TO COORDINATE THE PRESENCE OF UTILITIES INSPECTOR DURING CORING AND CONNECTIONS TO EXISTING MANHOLES.

DETAIL NO.	CITY OF OCOEE
UT202	CONSTRUCTION DETAILS
	Sanitary Manhole Ring and Cover
DATE: Feb. 2016	SCALE: n/a



- NOTES:**
- Use Ring & Covers Detail as depicted on this sheet for standard manhole applications. Refer to UT 203 Large & Receiving Ring and Cover Detail for large (8" or greater) and receiving manholes.
 - For structures with top elevation at surface, use "Flash Structure Casting" 1309 Ring.
 - Brick shall be solid red (dry) brick meeting ASTM F2114 - Grade MW.
 - Red Brick or Precast Concrete Risers shall be set on 12" concrete and Florida bedrock.
 - Manhole lids shall have two (2) locking prying holes.
 - Manhole lids shall have two (2) locking prying holes.
 - Where manhole lining (coating) is required, coating shall extend to ring sealing and coating ring's mortar bed.

DETAIL NO.	CITY OF OCOEE
UT202	CONSTRUCTION DETAILS
	Sanitary Manhole Ring and Cover
DATE: Feb. 2016	SCALE: n/a



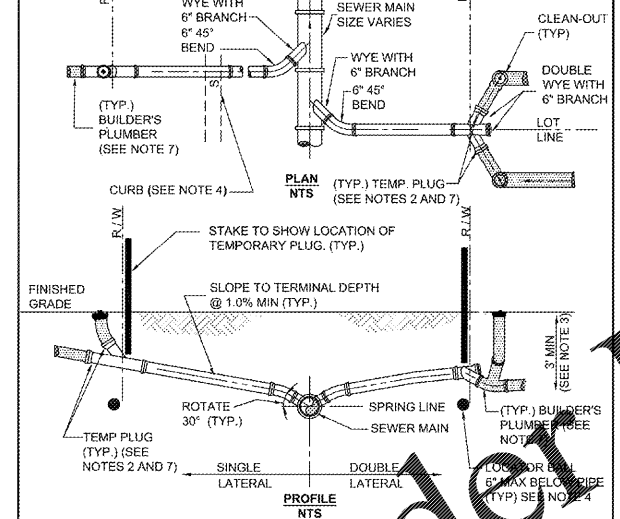
- NOTES:**
- Use Ring and Double Cover as depicted on this sheet for large (8" or greater) and receiving manhole applications. Refer to UT 202 for Standard Ring and Cover Detail for typical manholes.
 - For structures with top elevation at surface, use "Flash Structure Casting" 1309 Ring.
 - Brick shall be solid red (dry) brick meeting ASTM F2114 - Grade MW.
 - Manhole lids shall be Lettered with "City of Ocoee" (top), Sewer (center) and Florida (bottom).
 - Manhole lids shall have two (2) non-penetrating pick holes.
 - Where manhole lining (coating) is required, coating shall extend to ring sealing and coating ring's mortar bed.

DETAIL NO.	CITY OF OCOEE
UT203	CONSTRUCTION DETAILS
	Large & Receiving Manhole Ring and Double Cover
DATE: Feb. 2016	SCALE: n/a

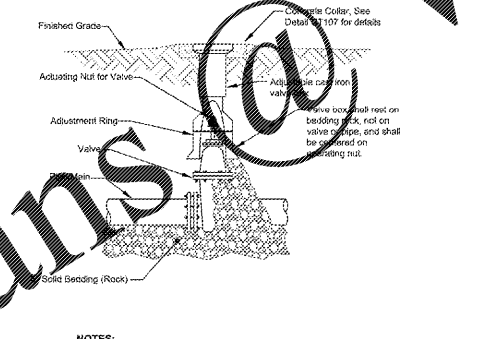
ORANGE COUNTY UTILITIES STANDARDS AND CONSTRUCTION SPECIFICATIONS MANUAL

APPENDIX A STANDARD DRAWINGS GENERAL

DATE: February 11, 2011 SERVICE LATERAL FIGURE A305

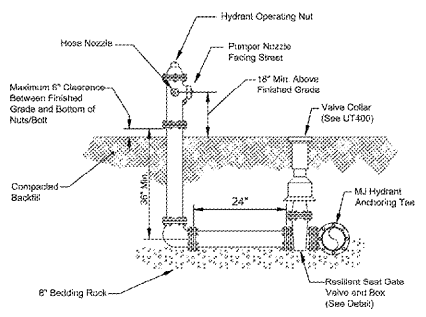


- NOTES:**
- INVERT OF SERVICE LATERAL SHALL NOT ENTER SEWER MAIN BELOW SPRING LINE.
 - SERVICE LATERAL SHALL BE CURVED BY DEVELOPER'S WORK CONTRACTOR.
 - WYE TO BE NO SHALLOWER THAN 3'-0" AND 1' DEEPER THAN 1'-0" FEET.
 - LOCATOR BALLS TO BE INSTALLED BY DEVELOPER'S SITE-WORK CONTRACTOR, ONE PER SERVICE.
 - ALL FITTINGS SHOWN ARE TO BE INSTALLED.
 - SERVICE CONNECTIONS SHALL BE PERMANENTLY MARKED BY CUTTING AN "S" IN THE CURB DIRECTLY OVER THE LATERAL.
 - BUILDER'S PLUMBER WILL REMOVE TEMP. PLUG, INSTALL CLEANOUT, AND CONNECT SERVICE LATERAL TO HOUSE.

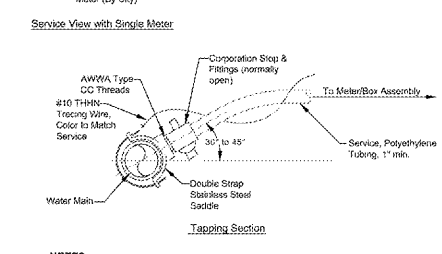
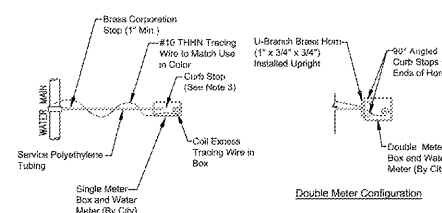


- NOTES:**
- PVC extensions shall not be used on valve box.
 - The adjusting nut for valves shall be no deeper than 24" from ultimate finished grade.
 - Where valve nut is more than 36" below grade, valve assembly shall include center spacing guide or extension as approved by the City.

DETAIL NO.	CITY OF OCOEE
UT400	CONSTRUCTION DETAILS
	Valve Box and Cover
DATE: Mar. 2016	SCALE: n/a



DETAIL NO.	CITY OF OCOEE
UT402	CONSTRUCTION DETAILS
	Fire Hydrant Assembly
DATE: Feb. 2016	SCALE: n/a



- NOTES:**
- All fittings shall be brass with compression-pack joint type connections.
 - No service line shall extend or terminate under a driveway.
 - Meter end of service shall terminate with curb stop (90°) for single service and dual horn and curb stops (90°) for dual services.
 - Meter end of service shall terminate 3' past meter location where service shall, unless directed otherwise, extend 3' above finished grade tied to a 2" x 4" x 4" stake. If directed, service connection shall be buried and located with an 2" x 4" x 4" painted marker. Stake or marker shall indicate lot(s) to be served.
 - Concrete curb shall be marked (stamped or saw-cut) with "M" marking service.
 - Service connection to the main shall use approved saddle, and tapping of main shall be by a method where a solid coupon is removed.
 - Services installed under finished or existing pavement shall be directionally drilled.
 - Upon approval, direct tap (no saddle) may be used on Ductile Iron Pipe.
 - Service color shall be blue for potable water and purple (magenta) for reclaimed water.

DETAIL NO.	CITY OF OCOEE
UT405	CONSTRUCTION DETAILS
	Utility (Water & Reclaim) Service Connection
DATE: Feb. 2016	SCALE: n/a

THOMAS
ENGINEERING GROUP

4950 W. KENNEDY BLVD, SUITE 600
TAMPA, FLORIDA 33609
Phone: (813) 378-4100
Fax: (813) 378-4040
ThomasEngineeringGroup.com

REV.	DATE	DRN	CHK	DESCRIPTION
05/15/2019	CTD	CTD		PER CITY OF OCOEE COMMENTS 5/13/19
01/17/2019	AG	CTD		PER CITY OF OCOEE COMMENTS 3/29/19
				DOCUMENT CONTROL

FLORIDA BUSINESS CERT. OF AUTH. No. 77966

DARREN J. PARRIS
Professional Engineer
FLORIDA BUSINESS CERT. OF AUTH. No. 77966

DOLLAR TREE

OCOEE, FL
UTILITY DETAILS

PROJ. NO. FT180066 DWG. NO. C-11.1