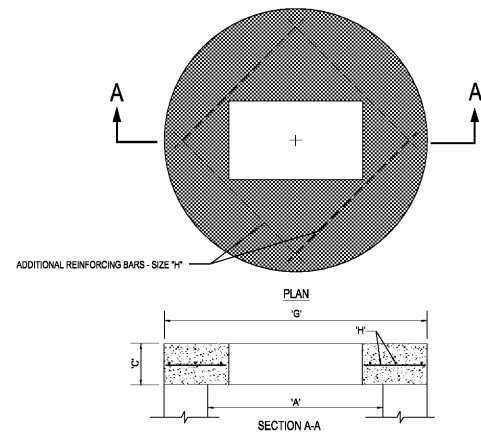


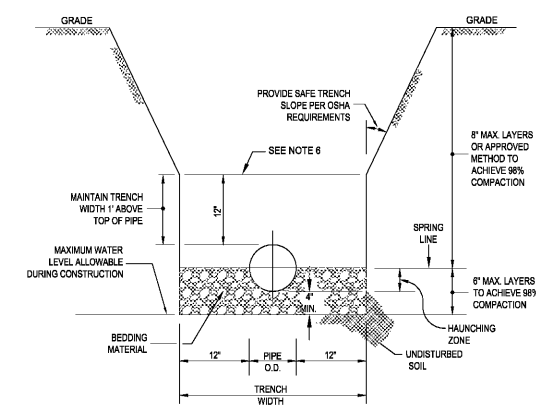
| TYPE | "A" | "B" | "C" | "D" | "E" | "F" |
|------|---------|-----|-----|---------------------------------|-------------------|----------|
| C-4 | 4'-0" Ø | 8" | 8" | #4 @ 12" C.C.E.W. | #4 @ 12" C.C.E.W. | 6'-4" Ø |
| C-5 | 5'-0" Ø | 8" | 8" | #5 @ 12" C.C.E.W. | #5 @ 12" C.C.E.W. | 7'-4" Ø |
| C-6 | 6'-0" Ø | 8" | 8" | #5 @ 12" C.C.E.W. | #5 @ 8" C.C.E.W. | 8'-4" Ø |
| C-7 | 7'-0" Ø | 8" | 8" | #5 @ 12" C.C.E.W. | #5 @ 8" C.C.E.W. | 9'-4" Ø |
| C-8 | 8'-0" Ø | 10" | 10" | 2-W.W.M. w/ #4 @ 12" C.C. VERT. | #5 @ 8" C.C.E.W. | 10'-8" Ø |

1 PRECAST CIRCULAR CATCH BASIN
SCALE: NONE



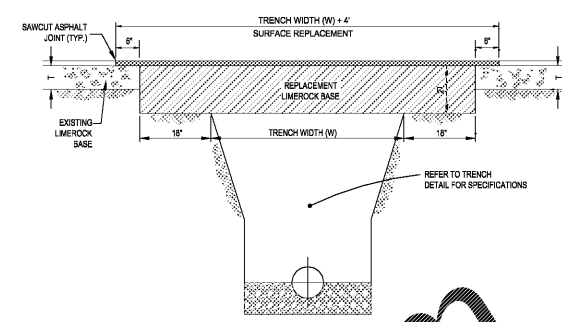
| TYPE | "A" | "C" | "G" | "H" |
|------|---------|-----|---------|------------------|
| C-4 | 4'-0" Ø | 8" | 5'-4" Ø | #4 @ 8" C.C.E.W. |
| C-5 | 5'-0" Ø | 8" | 6'-4" Ø | #5 @ 8" C.C.E.W. |
| C-6 | 6'-0" Ø | 8" | 7'-4" Ø | #5 @ 8" C.C.E.W. |
| C-7 | 7'-0" Ø | 8" | 8'-4" Ø | #5 @ 8" C.C.E.W. |
| C-8 | 8'-0" Ø | 10" | 9'-8" Ø | #5 @ 8" C.C.E.W. |

2 PRECAST CONCRETE-TOP SLAB
SCALE: NONE



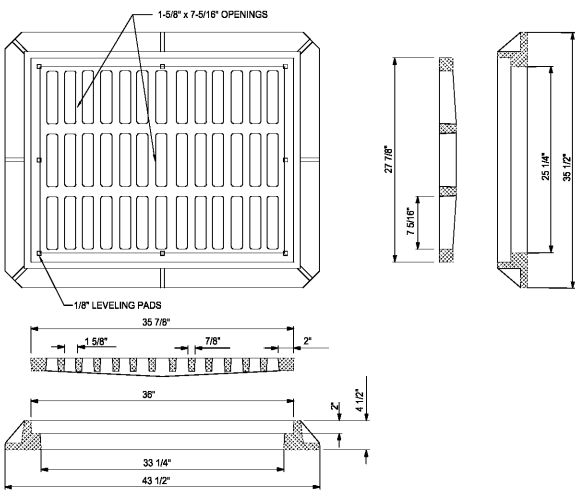
- NOTES:
- WHERE SOIL CONDITIONS CAN NOT BE MAINTAINED AS SHOWN ABOVE, PROVIDE APPROVED MEANS OF CONSTRUCTION.
 - BEDDING MATERIAL SHALL CONSIST OF WELL GRADED ASTM C33 #57 ROCK (3/4" TO No.4) AND BE PLACED TO SPRING LINE OF PIPE.
 - BACKFILL MATERIAL SHALL BE FREE OF MUCK, STUMPS, ROOTS, ROCKS OR OTHER MATERIAL UNACCEPTABLE TO ENGINEER.
 - SHEETING WILL BE REQUIRED AS DETERMINED IN THE FIELD.
 - REFER TO SPECIFICATIONS FOR EXCAVATION IN MUCK OR OTHER UNSUITABLE MATERIAL.
 - COMPACTION PERCENTAGES SHOWN REFER TO AASHTO T-180.
 - MECHANICAL COMPACTION NOT ALLOWED BELOW THIS LEVEL (WITHIN 12" OF TOP OF PIPE).
 - THOROUGHLY WORK IN AND TAMP THE BEDDING MATERIAL IN THE HAUNCHING ZONE BEFORE PLACING AND COMPACTING REMAINDER OF BACKFILL.

3 TRENCH DETAIL
SCALE: NONE



- NOTES:
- REPLACED BASE MATERIAL OVER TRENCH SHALL BE TWICE THE THICKNESS OF THE ORIGINAL BASE, MINIMUM 8". MAXIMUM 18".
 - BASE MATERIAL SHALL BE PLACED IN 6" MAXIMUM THICKNESS LAYERS AND EACH LAYER THOROUGHLY ROLLED FOR TAMPING TO ACHIEVE 98% MAXIMUM DENSITY, PER AASHTO T-180.
 - SUBGRADE MATERIAL SHALL BE FREE OF ANOMALIES AND SHALL HAVE A MINIMUM LBR OF 40.
 - ASPHALT CONCRETE PAVEMENT JOINTS SHALL BE MECHANICALLY SAWSAWED PARALLEL TO OR PERPENDICULAR TO THE ROADWAY.
 - SURFACE PAVED PAVEMENT JOINTS SHALL BE LAPPED.
 - SURFACE MATERIAL SHALL BE CONSISTENT WITH THE SURROUNDING SURFACE (MINIMUM 1" THICKNESS).
 - BASE MATERIAL SHALL HAVE A MINIMUM LBR OF 100 AND A MINIMUM COMPACTION PERCENTAGE OF 70% (80% FOR LOCAL STREETS).
 - IF THE TRENCH IS FILLED TEMPORARILY, IT SHALL BE COVERED WITH A 2" THICK POLYMER PORTLAND CEMENT PATCH TO KEEP THE FILL MATERIAL FROM RAVELING. REPLACE WITH A PERMANENT PATCH.

4 PAVEMENT RESTORATION DETAIL
SCALE: NONE



- NOTE:
1. GRATE TO BE TYPE U.S.F. No. 4155-6209

5 FRAME AND GRATE DETAIL
SCALE: NONE

Order Plans @ www.LDilling.com



THOMAS
4950 W. KENNEDY BLVD, SUITE 600
TAMPA, FLORIDA 33609
Phone: (813) 375-4100
Fax: (813) 375-4040
ThomasEngineeringGroup.com

| REV. | DATE | DRN | CHK | DESCRIPTION |
|------------|------|-----|-----|------------------------------------|
| 05/15/2019 | CTD | CTD | | PER CITY OF OCOEE COMMENTS 5/13/19 |
| 01/17/2019 | AG | CTD | | PER CITY OF OCOEE COMMENTS 3/29/19 |
| | | | | DOCUMENT CONTROL |



| | |
|-------------------------------------|----------|
| | |
| OCOEE, FL | |
| PAVING GRADING AND DRAINAGE DETAILS | |
| PROJ. NO. | FT180066 |
| DWG. NO. | C-8.0 |