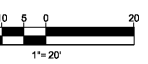
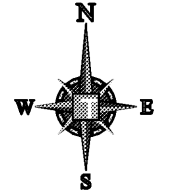


REGAL RIVER CIRCLE
 TRACT B
 CROWN POINTE COVE
 PLAT BOOK 88, PAGE 149
 50' PRIVATE ROADWAY



LEGEND:

- PROPERTY LINE
- PROPOSED BUILDING
- PROPOSED CENTERLINE
- EXISTING SIDEWALK
- PROPOSED ASPHALT PAVEMENT
(SEE DETAIL SHEET C-5.0)
- PROPOSED HEAVY DUTY ASPHALT PAVEMENT
(SEE DETAIL SHEET C-5.0)
- PROPOSED CONCRETE SIDEWALK
(SEE SHEETS C-5.0)
- PROPOSED FDOT TYPE 'D' CURB

SITE NOTES:

1. ALL DIMENSIONS SHOWN ARE AT FACE OF CURB, UNLESS OTHERWISE NOTED. B/C INDICATES DIMENSION IS TO BACK OF CURB.
2. ALL RADIUS DIMENSIONS ARE 3' TO FACE OF CURB UNLESS OTHERWISE NOTED.
3. ALL PAVEMENT MARKINGS AND SIGNAGE SHALL BE IN ACCORDANCE WITH THE "MANUAL ON UNIFORM TRAFFIC CONTROL DEVICES FOR STREETS AND HIGHWAYS," LATEST EDITION, AND ORANGE COUNTY LAND DEVELOPMENT CODE.
4. FREE STANDING SIGNAGE SHOWN ONLY FOR REPRESENTATIONAL PURPOSES, AND SHALL BE PERMITTED SEPARATELY.

DATUM NOTE:

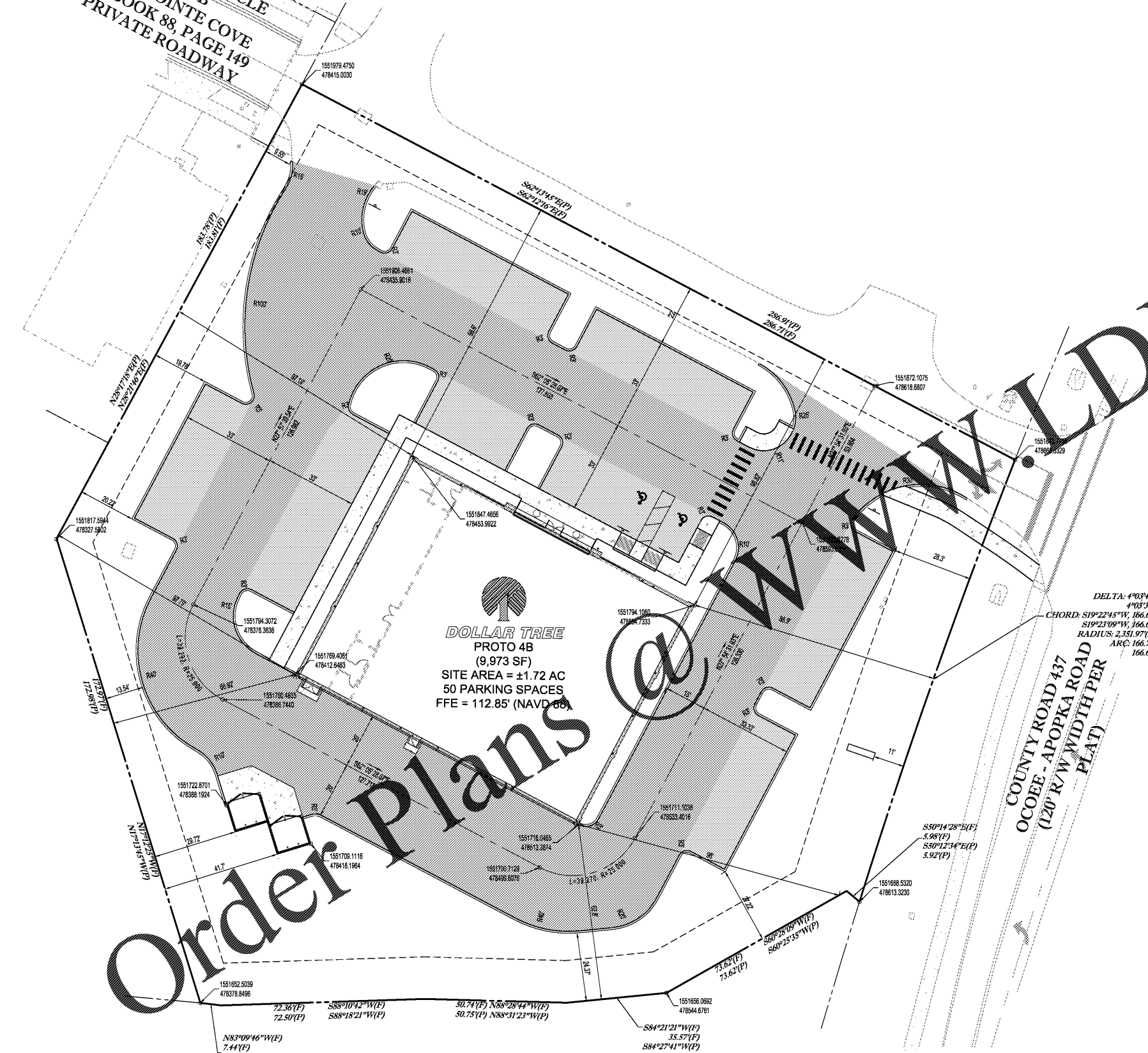
ELEVATIONS BASED ON ORANGE COUNTY BENCHMARK "L-603-017" HAVING AN ELEVATION OF 104.86 FEET, (NAVD 88).

BENCHMARK NOTE:

BENCHMARK #1: BENCHMARK N&D, ELEVATION = 110.71, DATUM = NAVD 88
 BENCHMARK #2: BENCHMARK N&D, ELEVATION = 110.85, DATUM = NAVD 88

FEMA MAP INFORMATION:

THIS BUILDING/LOT LIES IN ZONE "X", BASED ON FLOOD INSURANCE RATE MAP COMMUNITY NO. 120185, PANEL NUMBER 0210, SUFFIX F, CITY OF OCOEE, ORANGE COUNTY, FLORIDA.



DOLLAR TREE
 PROTO 4B
 (9,973 SF)
 SITE AREA = ±1.72 AC
 50 PARKING SPACES
 FFE = 112.85' (NAVD 88)

DELTA: 4°03'41"(F)
 4°03'38"(F)
 CHORD: S19°22'45"W, 166.65'(F)
 S19°23'09"W, 166.65'(F)
 RADIUS: 2,351.97'(F)
 ARC: 166.72'(F)
 166.68'(F)

COUNTY ROAD 437
 OCOEE - APOPKA ROAD
 (120' R/W WIDTH PER
 PLAT)

Order Plans @

THOMAS
 ENGINEERING GROUP
 4950 W. KENNEDY BLVD, SUITE 600
 TAMPA, FLORIDA 33609
 Phone: (813) 378-4100
 Fax: (813) 378-4040
 ThomasEngineeringGroup.com

REV.	DATE	DRN	CHK	DESCRIPTION
05/15/2019	CTD	CTD		PER CITY OF OCOEE COMMENTS 5/13/19
01/17/2019	AG	CTD		PER CITY OF OCOEE COMMENTS 3/29/19
				DOCUMENT CONTROL

DARREN R. FURRE
 LICENSED PROFESSIONAL ENGINEER
 No. 77690
 STATE OF FLORIDA
 FLORIDA LICENSE NO. 77986
 FLORIDA BUSINESS CERT. OF AUTH. NO. 77986

DOLLAR TREE
 OCOEE, FL
 HORIZONTAL CONTROL PLAN
 PROJ. NO. FT180066 DWG. NO. C-6.0

811 KNOW WHAT'S BELOW
 ALWAYS CALL 811
 BEFORE YOU DIG
 It's Fast. It's Free. It's The Way.
 www.callsunshine.com