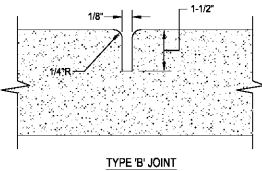
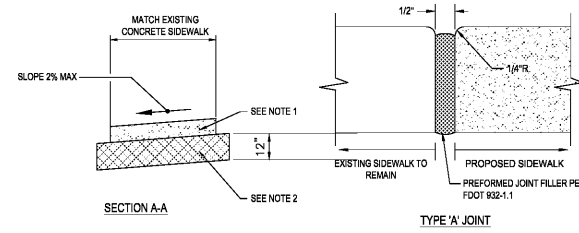
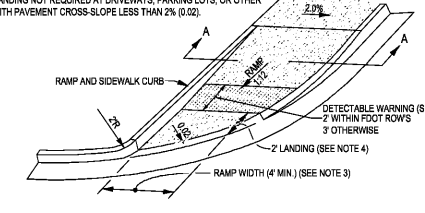


- NOTES:**
- SIDEWALK SHALL BE 4" THICK EXCEPT IN DRIVEWAYS WHERE THE THICKNESS SHALL BE 6".
 - SUBGRADE BELOW SIDEWALK SHALL BE COMPACTED TO 98% OF MAX. DENSITY PER A.A.S.H.T.O. T-190. (12" THICKNESS)
 - CONCRETE STRENGTH SHALL BE MIN. 3000 PSI @ 28 DAYS.
 - SIDEWALK REMOVAL & REPLACEMENTS TO CONSIST OF FULL FLAGS.
 - PROVIDE EXPANSION JOINT (TYPE 'A') AT CONNECTIONS BETWEEN NEW AND EXISTING SIDEWALK.
 - CONCRETE SIDEWALKS SHALL BE REINFORCED BY FIBER MESH.
 - ADDITION OF FIBERMESH OR 6x6 W/MF FOR SIDEWALKS TO BE CONSTRUCTED IN PUBLIC RIGHT-OF-WAYS.

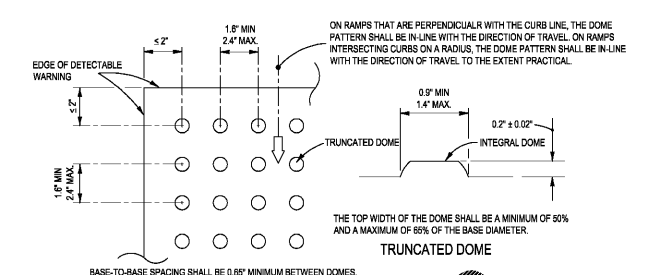
TABLE OF SIDEWALK JOINTS	
TYPE	LOCATION
'A'	AT CONNECTION BETWEEN NEW AND EXISTING SIDEWALK
'B'	5 FEET CENTER TO CENTER ON SIDEWALKS.



- NOTES:**
- SUBGRADE BELOW SIDEWALK SHALL BE COMPACTED TO 98% OF MAX. DENSITY PER A.A.S.H.T.O. T-190.
 - HANDICAP RAMP TO BE CONSTRUCTED IN ACCORDANCE WITH THE LATEST ADA GUIDELINES.
 - RAMP WIDTHS FOR CURB RAMP MAY BE REDUCED TO 3' MIN IN RESTRICTED CONDITIONS WHEN APPROVED BY THE ENGINEER.
 - LOWER LANDING NOT REQUIRED AT DRIVEWAYS, PARKING LOTS, OR OTHER AREAS WITH PAVEMENT CROSS-SLOPE LESS THAN 2% (0.02).



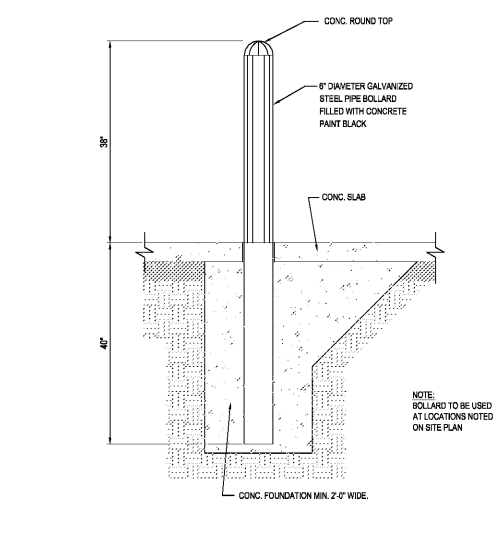
2 ADA CURB RAMP DETAIL - FDOT CR-G
SCALE: NONE



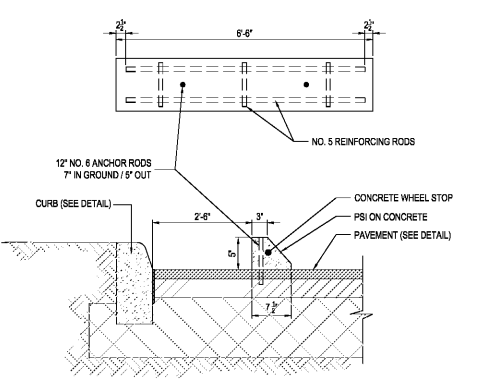
- NOTES:**
- ON RAMPS THAT ARE PERPENDICULAR WITH THE CURB LINE, THE DOME PATTERN SHALL BE IN LINE WITH THE DIRECTION OF TRAVEL. ON RAMPS INTERSECTING CURBS ON A RADIUS, THE DOME PATTERN SHALL BE IN LINE WITH THE DIRECTION OF TRAVEL TO THE EXTENT PRACTICAL.
 - THE TOP WIDTH OF THE DOME SHALL BE A MINIMUM OF 50% AND A MAXIMUM OF 60% OF THE BASE DIAMETER.
 - BASE-TO-BASE SPACING SHALL BE 0.65' MINIMUM BETWEEN DOMES.

3 ADA RAMP DETECTABLE WARNING DETAIL
SCALE: NONE

1 SIDEWALK DETAILS
SCALE: NONE

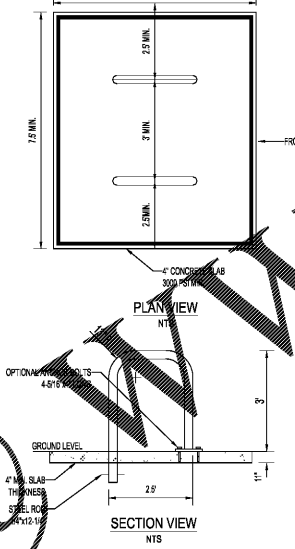


4 BOLLARD DETAIL
SCALE: NONE

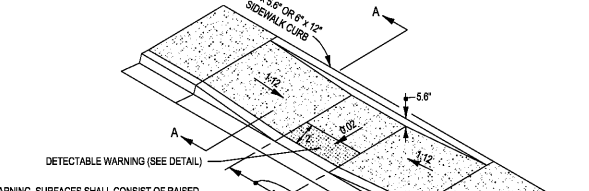
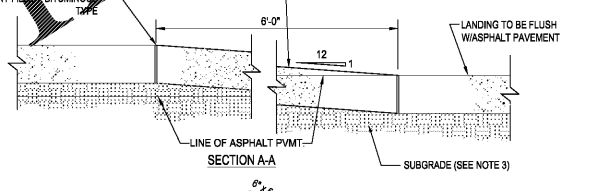


- NOTES:**
- WHEEL STOP FORM SIZES MAY VARY DEPENDING ON MANUFACTURER.
 - WHEEL STOPS SHALL BE PAINTED BLUE AT HDOP SPACES, UNPAINTED AT REGULAR SPACES.
 - WHEEL STOP TO BE CENTERED IN PARKING SPACE.

5 CONCRETE WHEEL STOP
SCALE: NONE

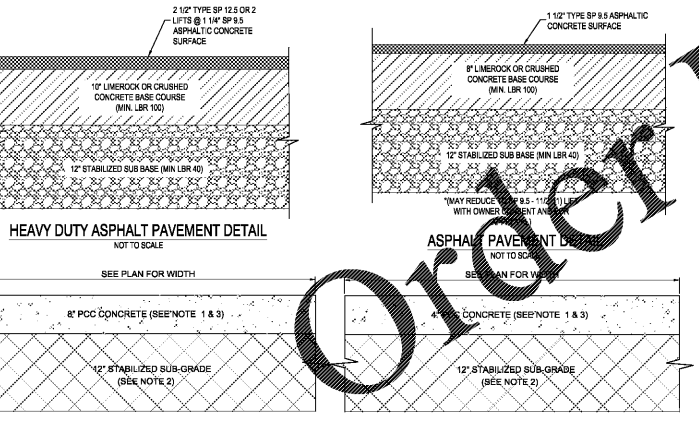


6 BIKE RACK DETAIL
SCALE: NONE



- NOTES:**
- DETECTABLE WARNING SURFACES SHALL CONSIST OF RAISED TRUNCATED DOMES WITH A BOTTOM DIAMETER OF NOMINAL 9.0 INCH AND A TOP DIAMETER OF 0.4 INCH, A HEIGHT OF 0.2 INCH AND A CENTER TO CENTER SPACING OF NOMINAL 2.35 INCH AND SHALL CONTRAST VISUALLY WITH ADJOINING SURFACES, EITHER LIGHT ON DARK OR DARK ON LIGHT. (SEE DETAIL)
 - SIDEWALK SHALL BE 4" THICK EXCEPT IN DRIVEWAYS WHERE THE THICKNESS SHALL BE 6".
 - SUBGRADE BELOW SIDEWALK SHALL BE COMPACTED TO 98% OF MAX. DENSITY PER A.A.S.H.T.O. T-190.
 - CONCRETE STRENGTH SHALL BE MIN. 3000 PSI @ 28 DAYS.
 - SIDEWALK REMOVAL & REPLACEMENTS TO CONSIST OF FULL FLAGS.
 - PROVIDE EXPANSION JOINT (TYPE 'A') AT CONNECTIONS BETWEEN NEW AND EXISTING SIDEWALK.
 - PROVIDE FIBEROUS JOINTS 20' O.C.

7 ADA SIDEWALK RAMP DETAIL AT ADA SPACES
SCALE: NONE

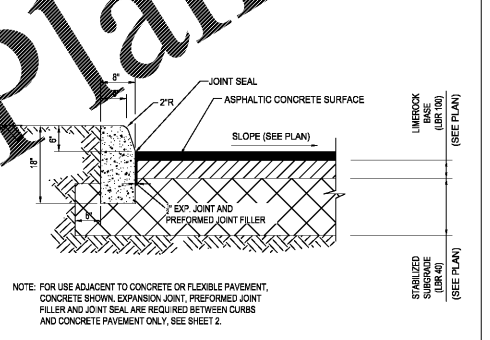


- NOTES:**
- CONCRETE SHALL BE 6" THICK EXCEPT IN DRIVEWAYS WHERE THE THICKNESS SHALL BE 8".
 - SUBGRADE BELOW SIDEWALK SHALL BE COMPACTED TO 98% OF MAX. DENSITY PER A.A.S.H.T.O. T-190.
 - CONCRETE STRENGTH SHALL BE MIN. 4000 PSI @ 28 DAYS.
 - SIDEWALK REMOVAL & REPLACEMENTS TO CONSIST OF FULL FLAGS.
 - PROVIDE EXPANSION JOINT (TYPE 'A') AT CONNECTIONS BETWEEN NEW AND EXISTING SIDEWALK.
 - PROVIDE FIBEROUS JOINTS 20' O.C.

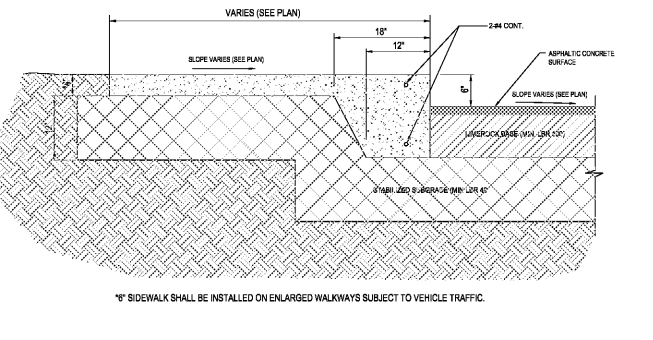
CONCRETE DETAIL AT DUMPSTER AREA
NOT TO SCALE

CONCRETE SIDEWALK DETAIL
NOT TO SCALE

8 STANDARD ON-SITE PAVEMENT DETAILS
SCALE: NONE



9 CONCRETE CURB (TYPE 'D') DETAIL
(FDOT INDEX 300)
SCALE: NONE



10 THICKENED EDGE SIDEWALK DETAIL
SCALE: NONE

811 KNOW WHAT'S BELOW ALWAYS CALL 811 BEFORE YOU DIG
It's fast. It's free. It's the law.
www.callsunshine.com

THOMAS ENGINEERING GROUP
4950 W. KENNEDY BLVD, SUITE 600
TAMPA, FLORIDA 33609
Phone: (813) 375-4100
Fax: (813) 375-4040
ThomasEngineeringGroup.com

REV.	DATE	DRN	CHK	DESCRIPTION
	05/15/2019	CTD	CTD	PER CITY OF OCOEE COMMENTS 5/13/19
	01/17/2019	AG	CTD	PER CITY OF OCOEE COMMENTS 3/29/19
				DOCUMENT CONTROL

DARREN L. PYRE, P.E.
Professional Engineer
FLORIDA LICENSE NO. 77996
FLORIDA BUSINESS CERT. OF AUTH. NO. 77996

DOLLAR TREE
OCOE, FL
SITE DETAILS
PROJ. NO. FT180066 DWG. NO. C-5.0