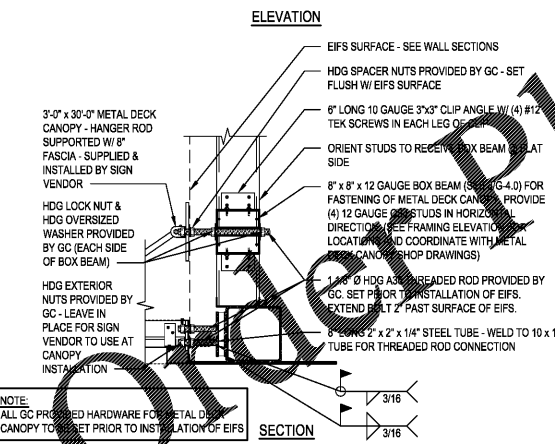
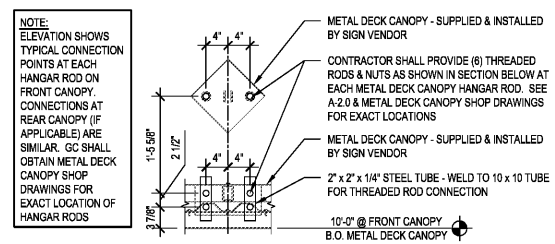
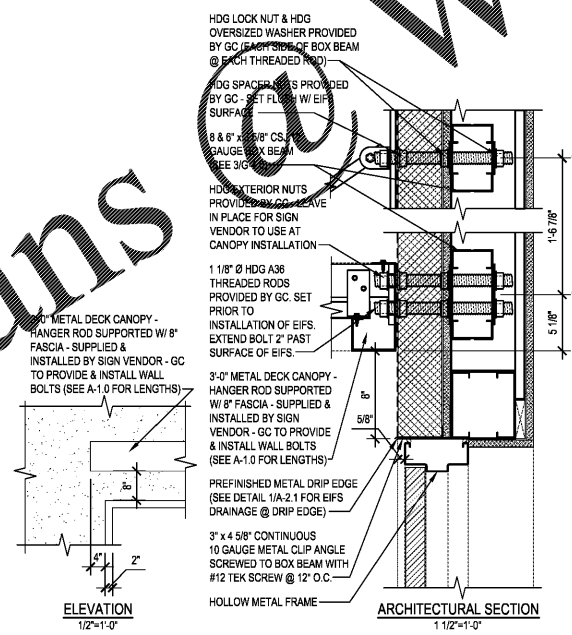


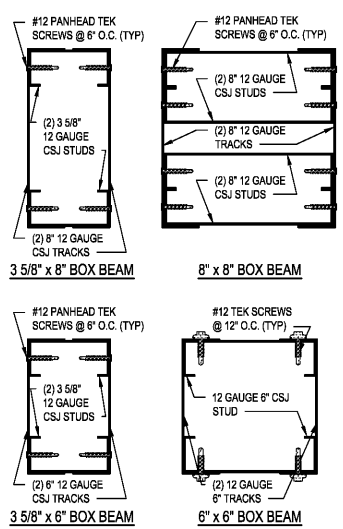
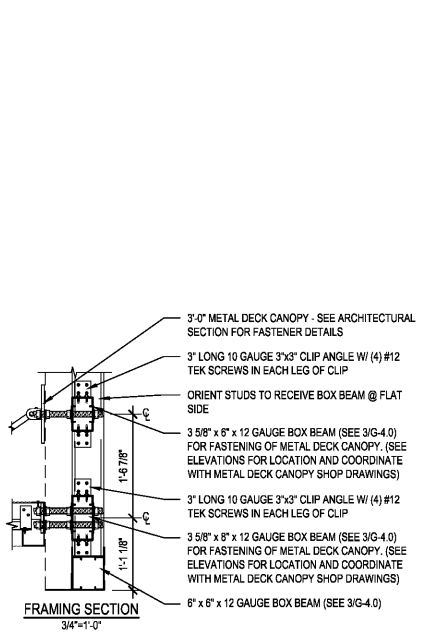
WWW.LDILine.com



1 FRONT METAL DECK CANOPY ATTACHMENT DETAIL
SCALE: 3/4"=1'-0"



2 METAL DECK CANOPY DETAIL AT DOOR 400
SCALE: 1/2"=1'-0" & 3/4"=1'-0" & 1 1/2"=1'-0"



3 BOX BEAM DETAILS
SCALE: 3"=1'-0"

NOTE:
ELEVATION SHOWS TYPICAL CONNECTION POINTS AT EACH HANGER ROD ON FRONT CANOPY. CONNECTIONS AT REAR CANOPY (IF APPLICABLE) ARE SIMILAR. GC SHALL OBTAIN METAL DECK CANOPY SHOP DRAWINGS FOR EXACT LOCATION OF HANGER RODS

NOTE:
ALL GC PROVIDED HARDWARE FOR METAL DECK CANOPY TO BE SET PRIOR TO INSTALLATION OF EIFS

HDG LOCK NUT & HDG OVERSIZED WASHER PROVIDED BY GC - SET FLUSH W/ EIFS SURFACE
HDG SPACER NUTS PROVIDED BY GC - SET FLUSH W/ EIFS SURFACE
HDG EXTERIOR NUTS PROVIDED BY GC - LEAVE IN PLACE FOR SIGN VENDOR TO USE AT CANOPY INSTALLATION

1 1/8" Ø HDG A36 THREADED RODS PROVIDED BY GC - SET PRIOR TO INSTALLATION OF EIFS. EXTEND BOLT 2" PAST SURFACE OF EIFS.

3" x 4 5/8" CONTINUOUS 10 GAUGE METAL CLIP ANGLE SCREWED TO BOX BEAM WITH #12 TEK SCREW @ 12" O.C.

HOLLOW METAL FRAME

HARDWARE NOTE:
GC IS TO PROVIDE 1-1/8" x 7 HOT-DIPPED GALVANIZED A36 THREADED ROD W/ ACCOMPANYING HOT-DIPPED GALVANIZED NUTS AS NOTED ON THIS SHEET.
GC MAY OBTAIN THIS HARDWARE FROM:
LIGHTNING BOLT & SUPPLY, INC
10626 SOUTH CHOCTAW DRIVE
BATON ROUGE, LA 70815
sales@lbsb.com
225-272-6200
PART NUMBERS ARE AS FOLLOWS:
THREADED ROD (12' STICK):
ATCYSTL072C000HG
NUT:
HHNCGR2018C000HG

QUALITY CONTROL NOTE:
THE CONTRACTOR IS REQUIRED TO HAVE THE INSTALLATION OF THE BOLTS SHOWN ON THIS SHEET INSPECTED BY THE TESTING AGENT AS NOTED IN SECTION 01450 OF THE SPECIFICATIONS. THIS INSPECTION SHALL BE DONE PRIOR TO THE INSTALLATION OF THE SHEATHING & EIFS.

REV.	DATE	BY	DESCRIPTION

PROJECT NUMBER:	1805-49
DRAWN BY:	LGS
CHECKED BY:	
ISSUE DATE:	6-6-19
DESCRIPTION:	
6-6-19	