

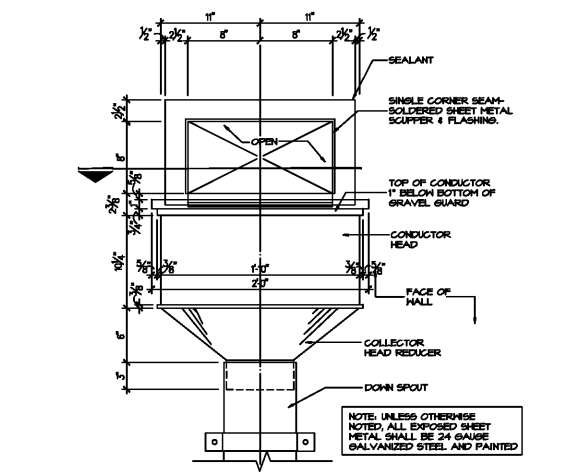
2019 ALL RIGHTS RESERVED BY ODOM ARCHITECTS, P.C. UNAUTHORIZED USE OR REPRODUCTION IS PROHIBITED WITHOUT WRITTEN CONSENT FROM ODOM ARCHITECTS, P.C.

PROJECT 0702.0219 MCD# V4
 CONSTRUCTION DOCUMENTS 05.31.19

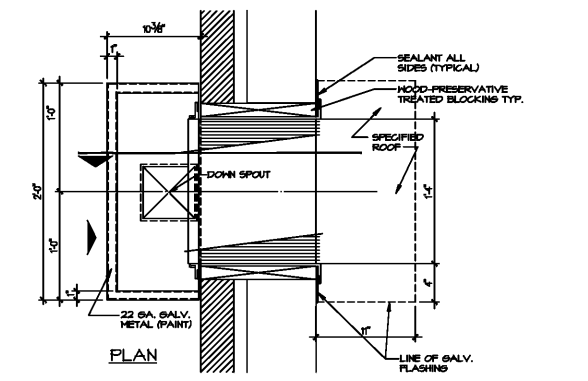


SHEET: ROOF PLAN

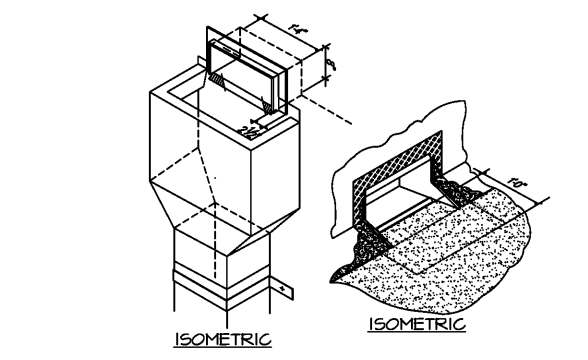
A1.6



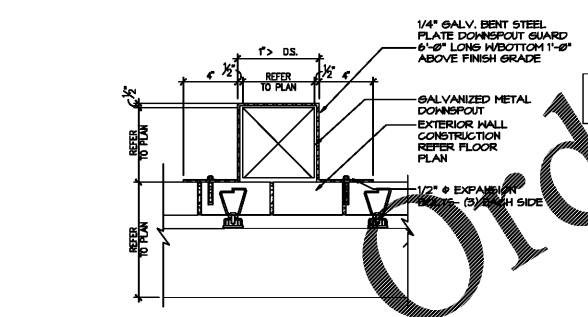
SCUPPER @ POP-OUTS
 1 1/2" = 1'-0" 6.1



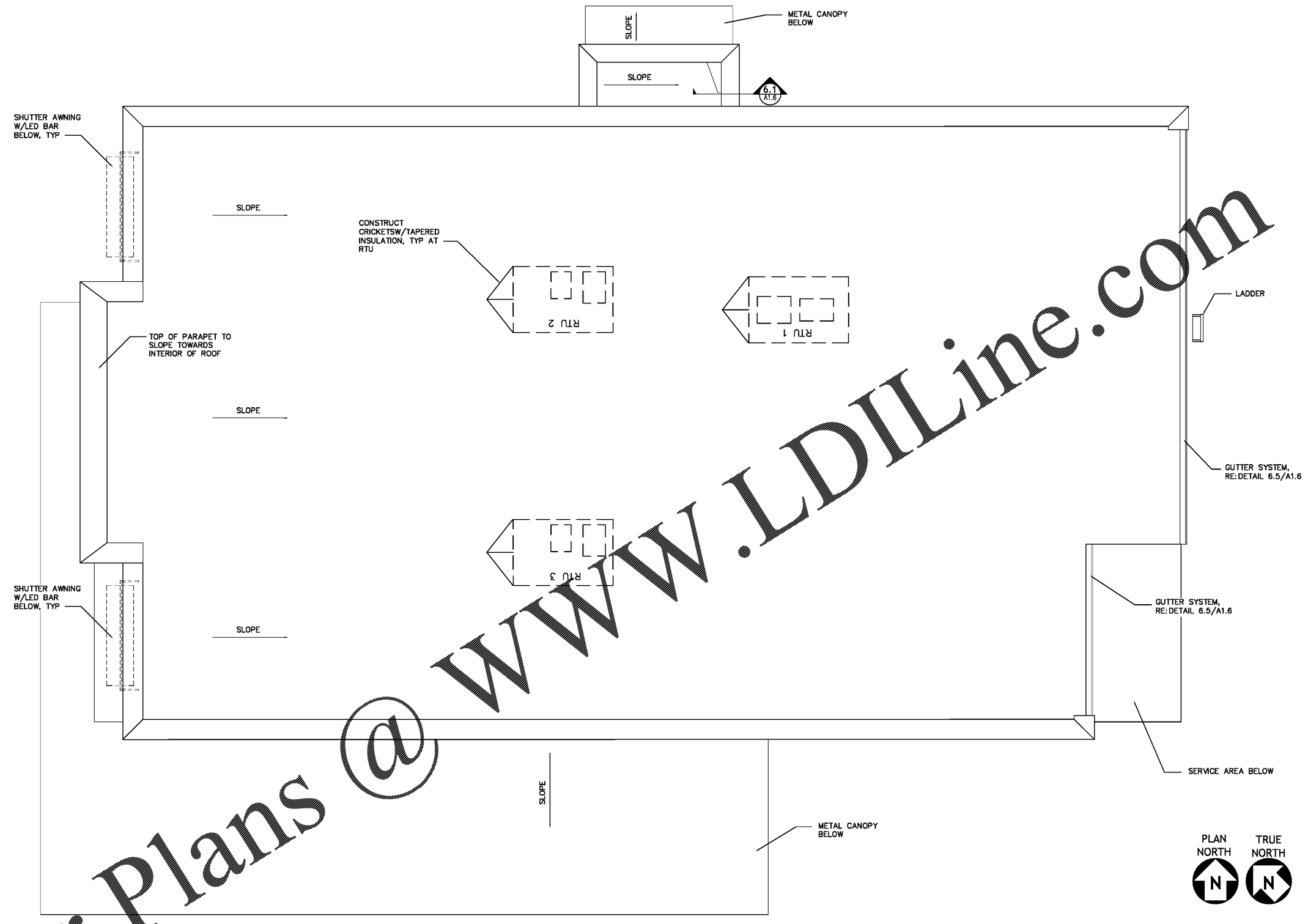
SCUPPER @ POP-OUTS SECTION
 1 1/2" = 1'-0" 6.2



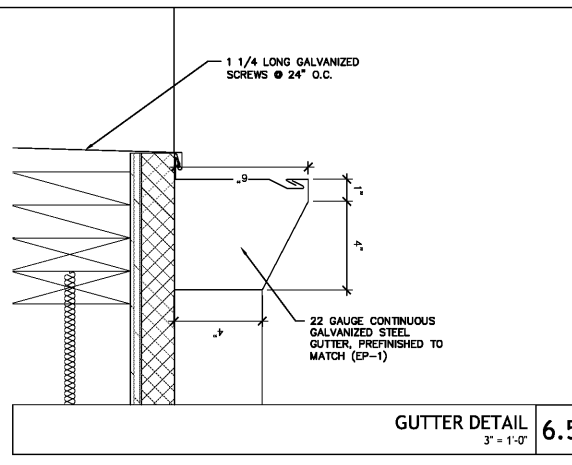
SCUPPER @ POP-OUTS ISO
 1 1/2" = 1'-0" 6.3



DOWNSPOUT GUARD, TYPICAL
 1 1/2" = 1'-0" 6.4



ROOF PLAN
 1/4" = 1'-0" 6



GUTTER DETAIL
 3" = 1'-0" 6.5

ROOF DRAINAGE CALCULATIONS	GENERAL NOTES
<p>ROOF GUTTER/DOWNSPOUTS MAX AREA PER ROOF DRAIN= 2,660 SF MAX RAINFALL RATE= 2.9" PER HOUR ROOF AREA= 3,800 SF MIN GUTTER & DOWNSPOUT REQ'D= 4" GUTTER & DOWNSPOUT PROVIDED= 4" MIN DOWNSPOUTS REQ'D= 2 DOWNSPOUTS PROVIDED= 3 DOWNSPOUTS ARE INTEGRAL & TO FLOW INTO STORMWATER SYSTEM</p> <p>ROOF SCUPPER/DOWNSPOUTS ROOF AREA= 50 SF (EACH) MIN GUTTER & DOWNSPOUT REQ'D= 4" DOWNSPOUTS TO HAVE SPLASH BLOCK</p>	<p>1 ALL HVAC EQUIPMENT CURBS TO HAVE CRICKETS. SLOPE SIDE STRIPPED INTO ROOF MEMBRANE TO ENSURE PROPER DRAINAGE AROUND CURBS.</p> <p>2 ALL HVAC EQUIPMENT TO HAVE WALK BOARDS OR WALK PADS ON ALL FOUR SIDES.</p> <p>3 PROVIDE ROLLER TYPE SUPPORTS AT 12" O.C. FOR ALL GAS PIPING EXCEEDING 2" DIAMETER AND PROVIDE WALK BOARD OR WALK PAD UNDER EACH ROLLER SUPPORT. TOP OF ROOF AND PARAPET ELEVATIONS ARE SHOWN IN FEET AND INCHES FROM THE LEVEL OF LEVEL AT FINISH FLOOR BELOW.</p> <p>4 PROVIDE WALK BOARDS OR WALK PAD MATERIAL UNDER BLOCKING FOR CONDUIT AND PIPING ON ROOF.</p> <p>5 ROOFING PENETRATIONS OR MODIFICATIONS SHALL BE PERFORMED IN ACCORDANCE W/ROOFING MANUFACTURER'S RECOMMENDATIONS. SHALL BE IN COMPLIANCE WITH ROOF WARRANTY REQUIREMENTS.</p> <p>6 PAINT ALL EXTERIOR UNFINISHED METAL FRAMES, RAILS, ETC. W/TWO (2) COATS OF EXTERIOR OIL PAINT, (TYP)</p> <p>7 ROOF SPECIFICATION: FULLY-ADHERED TPO OVER COVER BOARD AND MECHANICALLY-FASTENED INSULATION ON STRUCTURAL WOOD DECKING EQUAL TO JOHNS MANVILLE (SEE SPECIFICATION). INSULATION TO BE R-30 POLYISOCYANURATE BOARD.</p>