

TOP OF DUMPSTER AND TIRE STORAGE AREA TO BE CONSTRUCTED OF THE SAME MATERIAL AS THE MAIN BUILDING AND BE A HEIGHT OF 8'-0" AFF.

- KEY NOTES**
1. CONCRETE BRICK.
 2. ALUMINUM STOREFRONT WINDOW SYSTEM.
 3. EXTERIOR INSULATION FINISHING SYSTEM PANEL, SECURED PER MANUFACTURER'S RECOMMENDATIONS. REFER TO SECTIONS AND DETAIL FOR PROFILES.
 4. IMPACT RESISTANT EXTERIOR INSULATION FINISHING SYSTEM PANEL, SECURED PER MANUFACTURER'S RECOMMENDATIONS. REFER TO SECTIONS AND DETAILS FOR PROFILES.
 5. STANDING SEAM METAL ROOF.
 6. MASONRY ARCH WITH PRECAST CONCRETE KEYSTONE AND RADIUSED GALVANIZED STEEL LINTEL, PAINTED. REFER TO DETAIL A1A-202.
 7. FULL VISION SECTIONAL DOORS w/ DOUBLE PANE LOW-E INSULATED GLAZING.
 8. NOT USED.
 9. THROUGH WALL SCUPPER & CONDUCTOR HEAD, PAINTED.
 10. PREFINISHED METAL COPING/FLASHING.
 11. ILLUMINATED STORE SIGN BY SIGNAGE CONTRACTOR. UNDER SEPARATE PERMIT AND REVIEW. COORDINATE WITH GENERAL CONTRACTOR.
 12. 4X3" RECTANGULAR DOWNSPOUT, PAINTED. PLUMBING DRAWINGS FOR ROOF AT GRADE.
 13. TIRE ENCLOSURE GATE, PAINTED. REFER TO DETAIL C1A-502.
 14. HOLLOW METAL DOOR AND FRAME, PAINTED.
 15. 3/8" STAINLESS STEEL EYEBOLT. REFER TO STRUCTURAL DRAWINGS FOR RECOMMENDATIONS.
 16. SCREW SET SNOW GUARD SYSTEM PER ROOF MANUFACTURER'S DRAWINGS.
 17. OUTLINE OF MECHANICAL EQUIPMENT. REFER TO MECHANICAL DRAWINGS.
 18. EXTERIOR INSULATED FINISH SYSTEM JOINT WITH CENTER LINE OF MASONRY CONTROL JOINT, STOREFRONT MULLIONS OR AS INDICATED. COLOR TO MATCH ADJACENT BRICK.
 19. METAL COPING, PAINTED TO MATCH ADJACENT BRICK.
 20. EXTERIOR LIGHTING. REFER TO ELECTRICAL SERIES DRAWINGS, OR ADDITIONAL INFORMATION.
 21. NOT USED.
 22. 30x30 ACCESS PANEL BY ACCESS DOOR MODEL.
 23. EXTERIOR INSULATED FINISH SYSTEM PANEL TO MATCH ADJACENT BRICK COLOR.
 24. REFER TO CIVIL DRAWINGS FOR SPECIFIC SITE INFORMATION.
 25. OVERHEAD REFER.
 26. HOSE & REEL TO PLUMBING DRAWINGS.
 27. ELECTRICAL OUTLET. REFER TO ELECTRICAL DRAWINGS.
 28. ELECTRICAL SERVICE ENTRANCE, PAINTED. REFER TO ELECTRICAL DRAWINGS. COORDINATE LOCATIONS AND REQUIREMENTS WITH E-SERIES DRAWINGS AND LOCAL UTILITY.
 29. BULLHEAD ACCESS NUMBER IN CONTRASTING COLOR (WHITE) TO ADJACENT MATERIAL. FONT TO MATCH SIGNAGE.
 30. EMERGENCY KEY BOX LOCATION. REFER TO ALSO SPECIFICATIONS. COORDINATE KEY BOX REQUIREMENTS, LOCATION, AND MOUNTING HEIGHT WITH FIRE DEPARTMENT AUTHORITY HAVING JURISDICTION.
 31. CAST STONE WINDOW SURROUND.
 32. EXHAUST FAN, REFER TO MECHANICAL DRAWINGS.
 33. SAFETY GLAZING.
 34. ALUMINUM STOREFRONT. COORDINATE SIZE WITH CAST STONE WINDOW SURROUND.
 35. CONCRETE BRICK CUT TO FIT STEEL LINTEL. 1/2" PROUD OF BRICK WALL. ARCHED BRICK PATTERN TO REPEAT ON SHIP SIDE OF LINTEL.
 36. CAST STONE KEYSTONE. 1/2" PROUD OF BRICK ARCH.
 37. GAS METER. COORDINATE LOCATION AND REQUIREMENTS WITH P-SERIES DRAWING AND LOCAL UTILITY.
 38. PAINT EXPOSED ELECTRICAL CONDUIT TO MATCH ADJACENT MAN DOOR & FRAME.

- FINISH SCHEDULE**
- CONCRETE BRICK
- BASIS OF DESIGN: LEE BRICK & BLOCK 'MAXBRIC'
 - 4" H X 16" L X 8" W SCORED UNIFORM FOR FLEMISH BOND APPEARANCE
 - COLOR/TEXTURE: REFER TO SPECIFICATIONS
 - THOROUGHLY SORT BRICK TO ENSURE CONSISTENT COLOR VARIATION / PATTERN
- CAST STONE
- 'ROCKCAST' 'BUFFSTONE'
- EXTERIOR INSULATED FINISH SYSTEM (EIFS)
- 'DRYVIT' NATURAL WHITE #103, FINISH: 'SANDPEBBLE'
- STANDING SEAM METAL ROOF / SNOW GUARD SYSTEM
- 'BERRIDGE' 'DEEP RED'
- GUTTERS
- PREFINISHED METAL TO MATCH FINISHED EIFS
- DOWNSPOUTS / WALL COPING AT EIFS LOCATIONS
- PREFINISHED METAL TO MATCH FINISHED EIFS
- DOWNSPOUTS AT BRICK LOCATIONS
- CUSTOM PAINT TO MATCH ADJACENT BRICK. REFER TO SPECIFICATIONS
- ALUMINUM STOREFRONT WINDOWS & ENTRANCE DOOR
- BLACK ANODIZED
- ALUMINUM SECTIONAL DOOR
- BLACK ANODIZED
- HOLLOW METAL DOORS & FRAMES
- CUSTOM BRUSH PAINTED TO MATCH ADJACENT BRICK. REFER TO SPECIFICATIONS
- TRASH GATE & TRASH ENCLOSURE WALL COPING
- CUSTOM PAINT TO MATCH ADJACENT BRICK. REFER TO SPECIFICATIONS
- BOLLARDS
- SAFETY RED
- SEALANTS
- EIFS PANELS: TREMCO 'BUCKSKIN'
 - MASONRY: DOW CORNING 'RUSTIC BRICK'
- NOTE: SEAL BRICK, INTERIOR AND EXTERIOR



TIRE DISCOUNTERS
TIRE DISCOUNTERS HAMPTON COVE
 213 & 237 SUTTON RD.
 HUNTSVILLE, AL 35763

PROJECT NO: 19010

ISSUANCES

05.29.2019 - BID/PERMIT SET

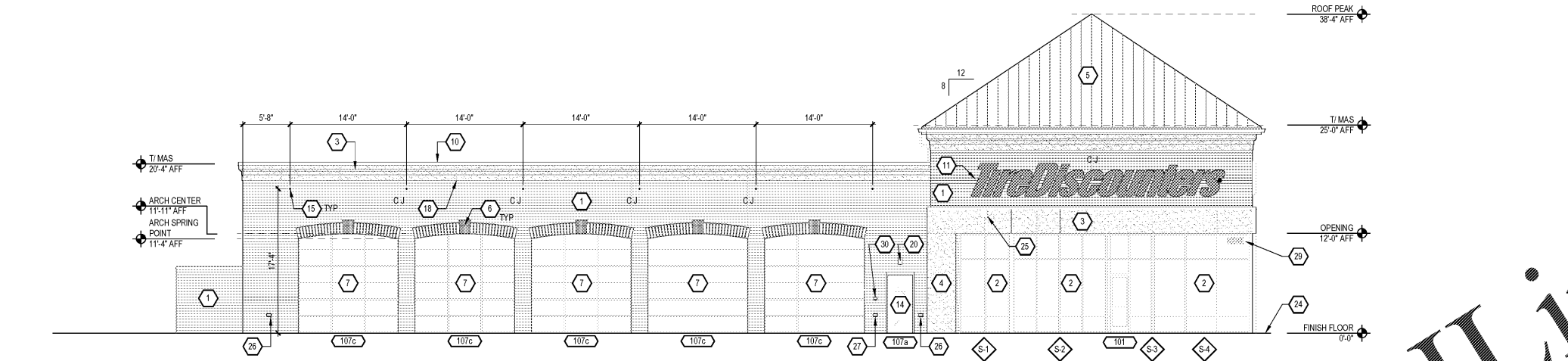
OPEN ARCHITECTURE, INC.



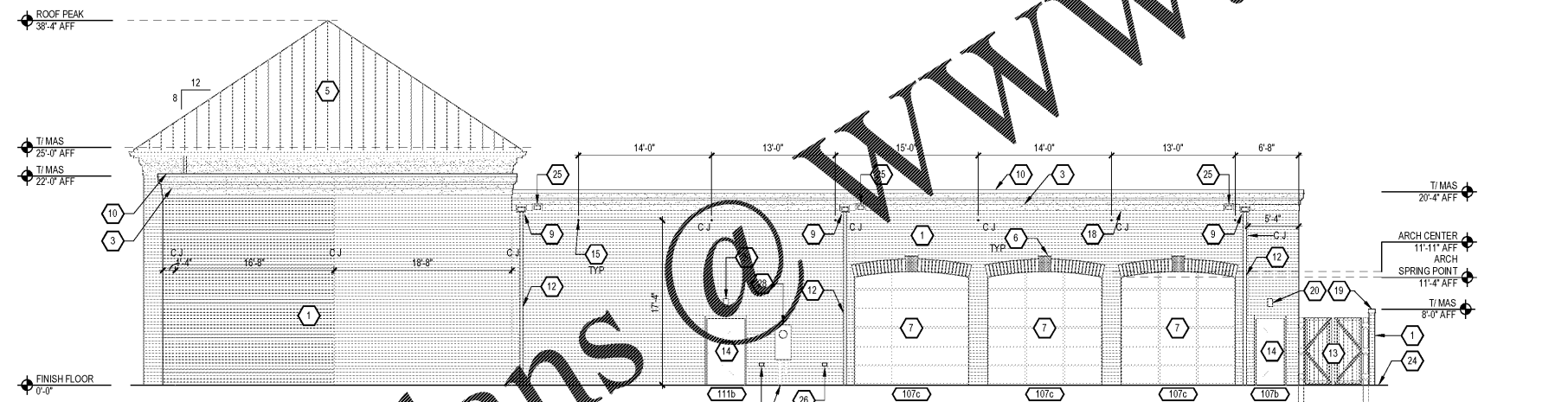
Exterior Elevations

DRAWN BY: ABH
 REVIEWED BY: ERC

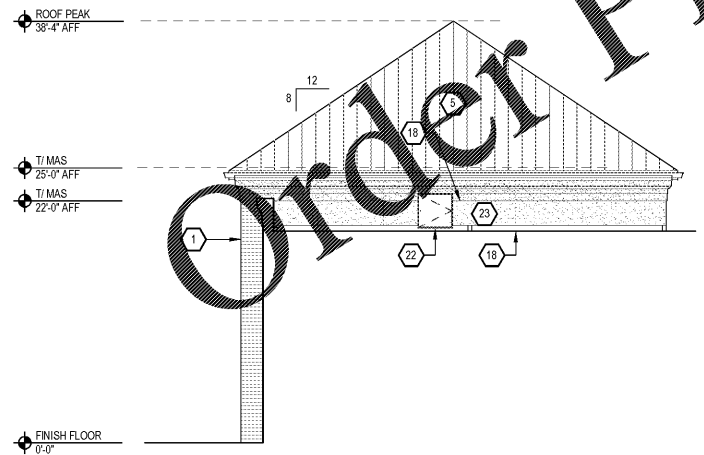
A-201



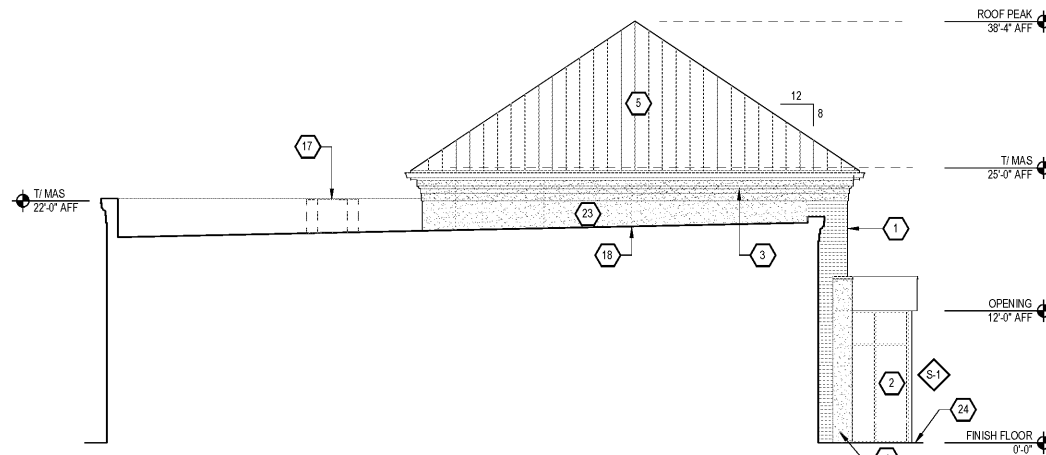
H1 Exterior Elevation
 A-201 SCALE: 1/8" = 1'-0"



D1 Exterior Elevation
 A-201 SCALE: 1/8" = 1'-0"



A1 Exterior Elevation
 A-201 SCALE: 1/8" = 1'-0"



A7 Exterior Elevation
 A-201 SCALE: 1/8" = 1'-0"

Order Plans @ WWW.LDILLING.COM