

**HERNDON
HOMES -
BLOCK 3**

SENIOR BUILDING
CAMERON MADISON ALEXANDER
BLVD & NEW STREET
ATLANTA, GA, 30318

OWNER / DEVELOPER
HUNT COMPANIES
404.921.2555

STRUCTURAL ENGINEER
MMSA
404.997.6799

MEP ENGINEER
NEWCOMB + SOYD
404.730.8400
MIKE NORMAN
404.730.8400

CIVIL ENGINEER
THOMPSON EHLE COMPANY
404.266.1400

LANDSCAPE ENGINEER
LORD ASCK SARGENT
877.929.1400

INTERIOR DESIGNER
SHAPE
404.845.6468

Key Plan

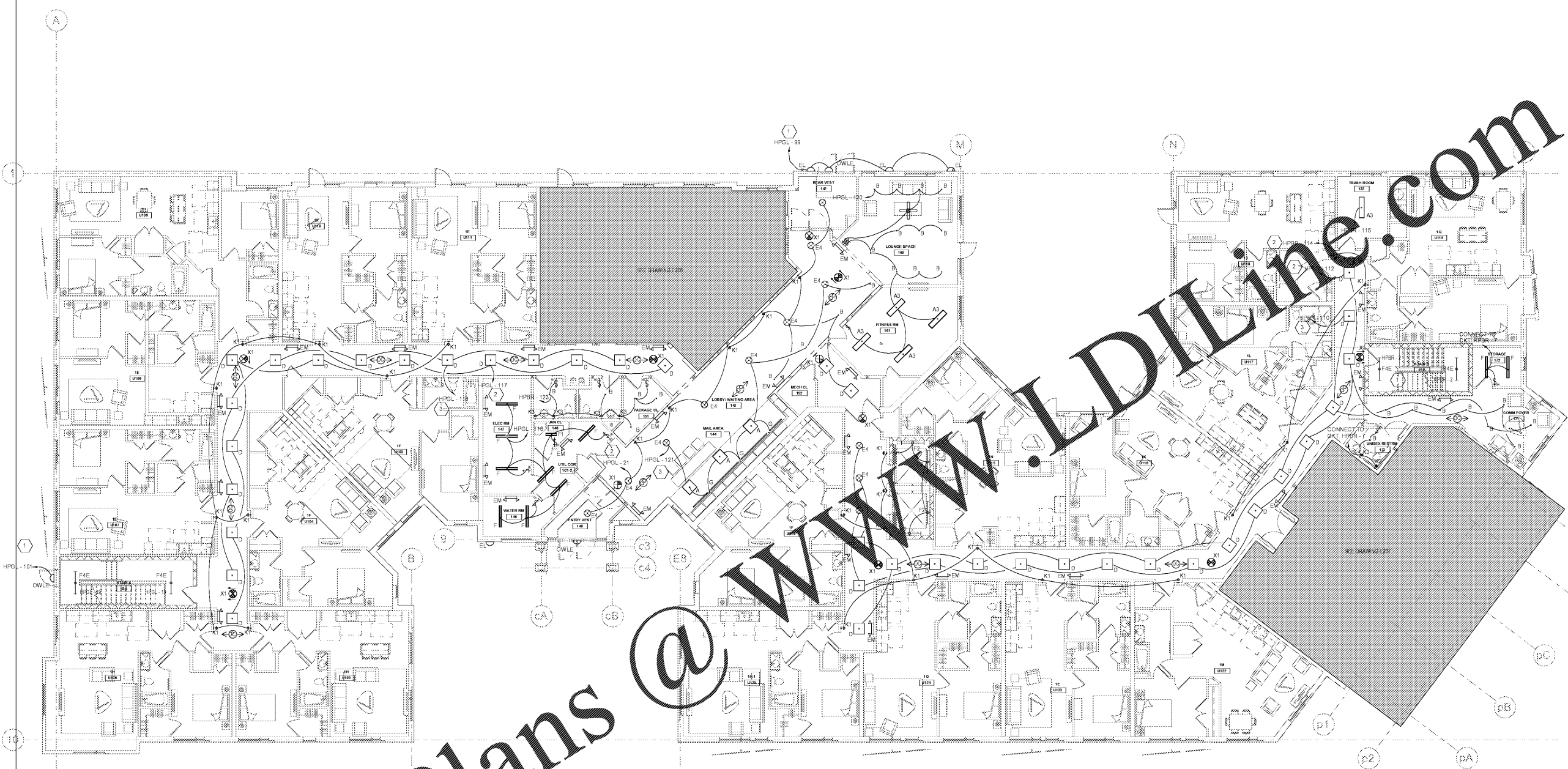
Issue
NO. DATE

Revisions
NO. DATE

**GROUND FLOOR
PLAN - LIGHTING**

PRINCIPAL IN CHARGE
RSW, BEO
PROJECT ARCHITECT
RSW
DRAWN
CA, ES
DATE
03/29/2019
SCALE:
As Indicated
APPROVED
RSW
JOB NO.
15297.02

DRAWING NO.
E202L



Order Plans @

1 GROUND FLOOR PLAN - LIGHTING
SCALE: 1/8" = 1'-0"

GENERAL NOTES:

1. ALL EMERGENCY FIXTURES SHALL BE CONNECTED TO THE UNSWITCHED PHASE CONDUCTOR OF THE CIRCUIT SERVING THE RESPECTIVE AREA
2. REFER TO DRAWING E001 FOR LIGHTING FIXTURE SCHEDULES
3. REFER TO DRAWING E500 FOR PANELBOARD SCHEDULES
4. CORRIDOR LIGHT FIXTURE CIRCUITED TO WALL SCONCES SHALL OPERATE CONTINUOUSLY. ALL OTHER FIXTURES SHALL BE CONTROLLED BY OCCUPANCY SENSOR. ROUTE HOME RUN FOR CONTROLLED FIXTURES VIA TIME CLOCK
5. PROVIDE MINIMUM #10 AWG CONDUCTORS FOR CORRIDOR LIGHTING FIXTURES
6. ELECTRICAL DEVICES LOCATED IN UN-CONDITION AREAS AND/OR SPACES SHALL BE PROVIDED WITH WEATHERPROOF ENCLOSURES AND BE RATED AS WEATHER RESISTANCE TYPE. UN-CONDITION SPACES SHALL INCLUDE BUT ARE NOT LIMITED TO PARKING GARAGE AND OPEN BREEZE WAY.
7. REFER TO INTERIOR DESIGNER REFLECTED CEILING PLANS FOR EXACT LOCATION OF ALL LIGHTING FIXTURES
8. PARKING GARAGE AND STAIR WELL LIGHTING FIXTURES SHALL BE CONNECTED TO PANEL WITH 2#10, 1#10G, 1/2"C FOR THE ENTIRE CIRCUIT LENGTH
9. REFER TO LANDSCAPE DRAWINGS FOR EXACT PLACEMENT AND MOUNTING OF COURTYARD FIXTURES.

KEYNOTES:

1. CIRCUIT CONTROLLED BY LIGHTING CONTACTOR WITH ASTRONOMICAL TIMECLOCK AND PHOTOCCELL. PROVIDE 2# 10, 1#10G, 3/4"C FOR ENTIRE CIRCUIT LENGTH
2. LIGHTS CONNECTED TO THIS CIRCUIT SHALL RUN CONTINUOUSLY 24/7
3. LIGHTS CONNECTED TO THIS CIRCUIT SHALL BE CONTROLLED VIA TIME CLOCK DURING THE DAY AND OCCUPANCY BY NIGHT