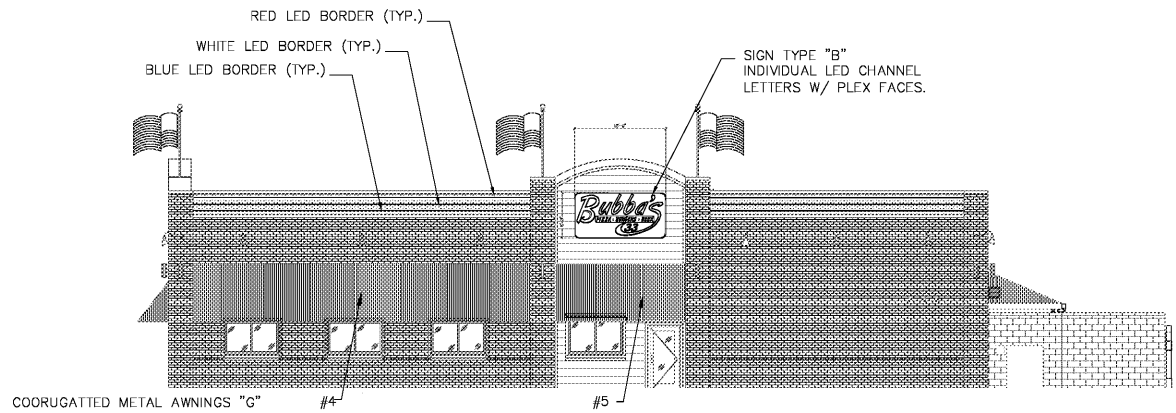
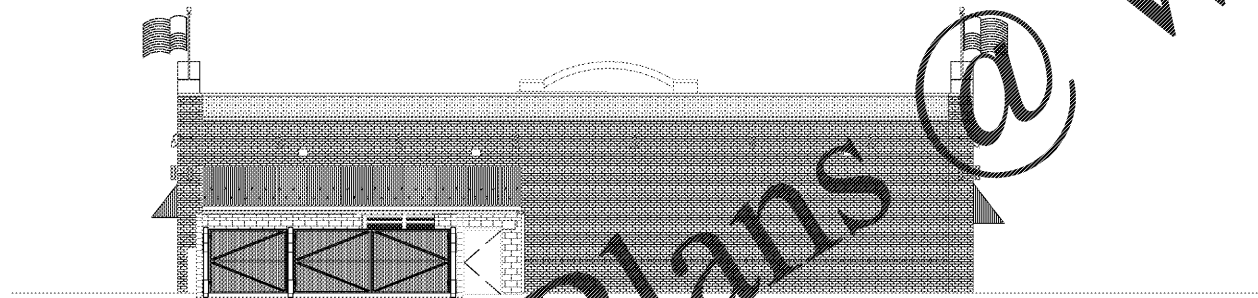


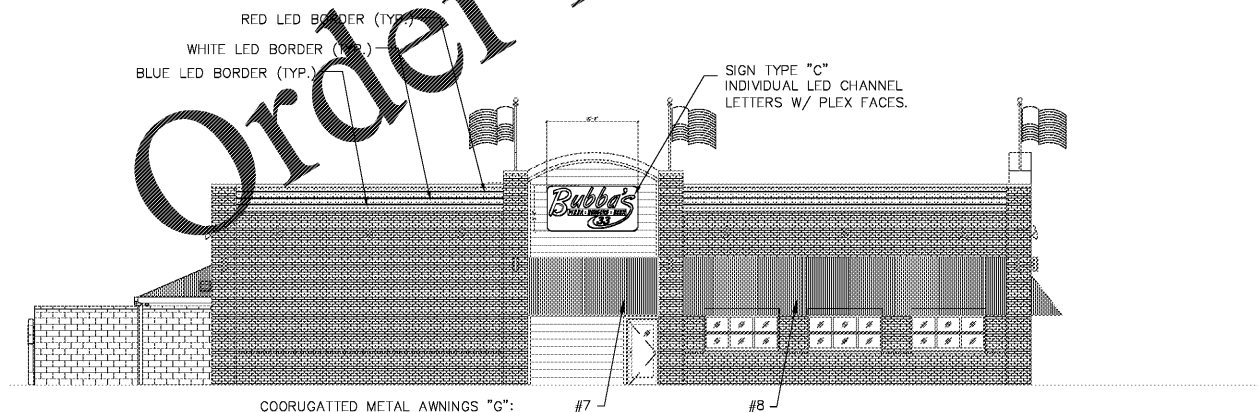
1 FRONT ELEVATION
SCALE: 1/8" = 1'-0"



2 RIGHT ELEVATION
SCALE: 1/8" = 1'-0"



3 REAR ELEVATION
SCALE: 1/8" = 1'-0"



4 LEFT ELEVATION
SCALE: 1/8" = 1'-0"

CONSTRUCTION SET NOTE:

THE FOLLOWING PAGES (DESIGN NO. N-010801, N1-N3) ARE PROVIDED BY FEDERAL SIGN TO RELAY SIGN PLACEMENT, SIGN CONSTRUCTION AND SIGN CIRCUIT ELECTRICAL DETAILS ONLY. ELEVATION DETAILS ARE REPRESENTATIVE OF TYPICAL PROTOTYPE 2C CONSTRUCTION AND ARE NOT TO BE REFERENCED FOR BUILDING CONSTRUCTION PURPOSES.

GENERAL SPECIFICATIONS:

- A - DISPLAYS:**
1. BORDER LED: TO BE SLOAN FIVE ROW LEDSTRIP (1) #701189A-W(WHITE), (2) #701189A-B (BLUE) and (2) #701189A-R (RED).
2. SIGN TYPE "A", "B" and "C": CABINET: FACE AND SIDES PAINTED BLACK. NEON BORDER: VOLTARC ULTRA BLUE. .063 ALUMINUM LETTERS AND BACKER. BUBBA'S: CHANNEL LETTERS PAINTED PMS 4796C RED INSIDE AND OUTSIDE W/ CLEAR RED NEON. PIZZA*BURGERS*BEER: CHANNEL PAINTED PMS 1795C RED INSIDE AND OUTSIDE. COPY WHITE VINYL COPY OVERLAD WITH SINGLE STROKE 2500 WHITE PAIN.
3. AWNINGS-SIGN TYPE "G": METAL COVERING: Pre-Finished 2.5" Corrugated panels 26 Gauge In Galvalume. METAL LED COVERING: Pre-Finished Flat Panels 26 Gauge In Galvalume (Part # 2262041). MOUNTING: 1/2" STEEL "Z" BRACKET EVERY 48" ON TOP AND BOTTON AWNING RAILS. Contact: Metal Sales Manufacturing Clyde Pennington © 812-704-2767 cpennington@metalsales.us.com Comes In 2' wide coverage panel. Actual length is about 26-27". Cut to Lengths Needed.

- B - ELECTRICAL REQUIREMENTS:**
1. PRIMARY CIRCUITS: IT IS THE THE RESPONSIBILITY OF THE GENERAL CONTRACTOR TO PROVIDE AND MAKE FINAL CONNECTION OF THE REQUIRED NUMBER OF BRANCH CIRCUITS TO EACH SIGN LOCATION. ALL BRANCH CIRCUITS FEEDING THE DISPLAYS SHALL MEET THE REQUIREMENTS OF NEC AND ALL LOCAL REGULATORY REQUIREMENTS. ALL BRANCH CIRCUITS SHALL BE DEDICATED TO SIGNS (INCLUDING GROUND AND NEUTRAL) AND SHALL NOT BE SHARED WITH OTHER LOADS. PROPERLY SIZED GROUND WIRE THAT CAN BE TRACED BACK TO THE BREAKER PANEL SHALL BE PROVIDED. SHARING OF NEUTRAL WITH OTHER LOADS SUCH AS LIGHTING, AIR-CONDITIONING AND OTHER EQUIPMENT IS NOT ALLOWED. SHARED NEUTRAL WITHIN SIGN CIRCUITS MAY BE ALLOWED ONLY IF BALANCED OPPOSITE PHASING IS PROVIDED. ANY DEVIATION FROM THE ABOVE MAY RESULT IN DAMAGE, DELAYS AND ADDITIONAL COSTS.
2. SIGN INSTALLATION: INSTALLATION MUST MEET SECTION 600 OF NEC AND UL 48 REQUIREMENTS. ALL TRANSFORMERS SHALL BE UL2161 LISTED. ALL COMPONENTS SHALL BE INSTALLED IN ACCORDANCE WITH THE MANUFACTURER'S INSTALLATION INSTRUCTIONS.

- C - SPECIAL INSTALLATION INSTRUCTIONS**
 1. SEAL ALL ELECTRICAL PENETRATIONS. PAY SPECIAL ATTENTION TO CAULK AND/OR SILICONE PENETRATIONS BEHIND CHANNEL LETTERS & LOGO BEFORE MOUNTING TO WALL.
 2. SEAL AROUND SIDES AND TOPS OF LETTERS & LOGO TO AT LEAST EVEN WITH ELECTRICAL PENETRATIONS.
 3. ALL LED BORDER ELECTRICAL PENETRATIONS TO BE SEALED WITH SILICONE.
 4. MOUNT TRANSFORMER/POWER SUPPLY BOXES PROPERLY TO WALL (VERTICAL-TOPSIDE LID).
 5. TRANSFORMERS & POWER SUPPLIES MUST BE BOLTED TO BOXES.
 6. TRANSFORMERS & POWER SUPPLIES MUST BE GROUNDED TO A GREEN WIRE.
 7. COMPLETELY TIGHTEN ALL PRIMARY AND SECONDARY CONNECTIONS.
 8. MAINTAIN MINIMUM 1/2" CLEARANCE BETWEEN PRIMARY AND SECONDARY WIRES.

Order Plans @

www.fedline.com

This original drawing is provided as part of a planned project and is not to be exhibited, copied or reproduced without the permission of Federal Sign Company LLC or its authorized agent.

Bubba's
 PERMIT/BID SET
 EAST FRANKLIN BOULEVARD & ARMSTRONG PARK ROAD
 GASTONIA, NC

NO.	REVISIONS	DATE	BY

DESIGN NO:	N-010801
PROJECT MGR.:	S. MAESER
DRAWN BY:	SM
DATE:	5/3/19
APPROVED BY:	
SCALE:	AS NOTED
JOB NO:	