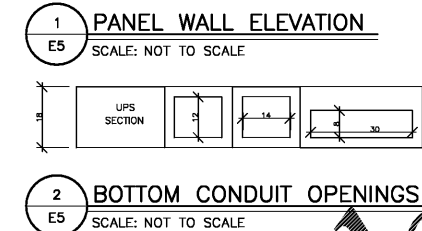
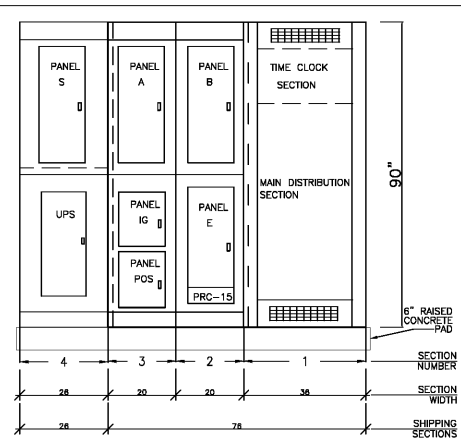
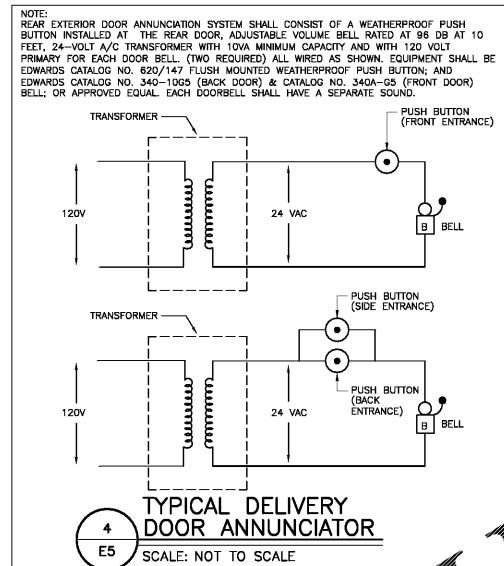


ELECTRICAL GENERAL NOTES

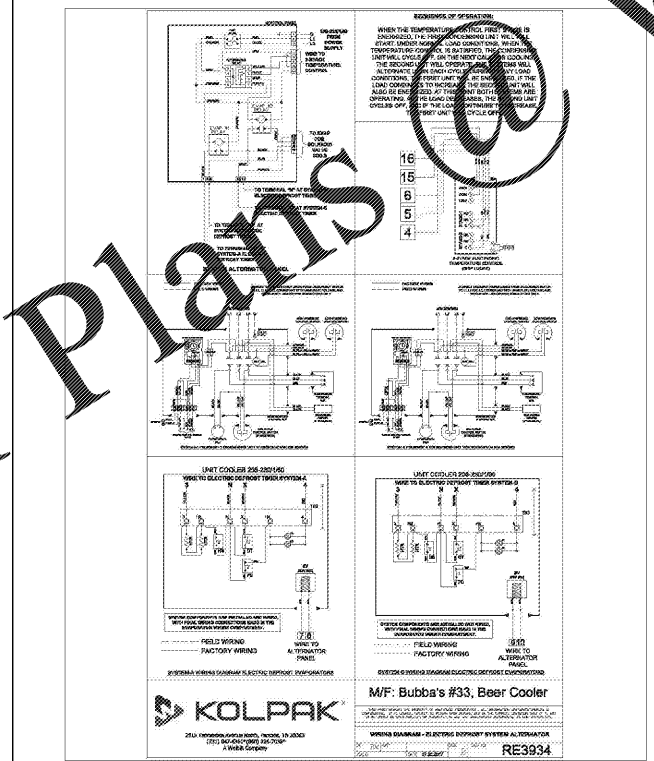
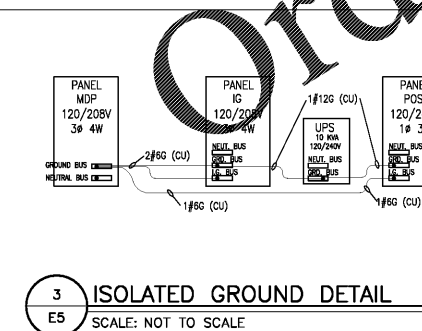
- THE EQUIPMENT ROUGH-INS AS SHOWN ARE ACCURATE TO THE BEST OF OUR KNOWLEDGE. HOWEVER, IN SOME INSTANCES, THE OWNER OR SUPPLIER MAY SUBSTITUTE OR THE EQUIPMENT MAY VARY FROM WHAT IS SHOWN. THEREFORE, THE CONTRACTOR SHALL VERIFY ALL CRITICAL DIMENSIONS WITH THE OWNER PRIOR TO CONSTRUCTION. FAILURE OF THE CONTRACTOR TO VERIFY THESE DIMENSIONS SHALL PLACE THE RESPONSIBILITY FOR ANY SUBSEQUENT RELOCATION DIRECTLY UPON THE CONTRACTOR.
- ALL WORK SHALL BE DONE IN ACCORDANCE WITH THE LATEST EDITION OF THE N.E.C. AND STATE AND LOCAL CODES AS THEY APPLY.
- SWITCHGEAR & PANELS SHALL BE W.R. CONTROLS, SEE NOTES SHEET E-3.
- ALL DISCONNECT SWITCHES SHALL BE RATED FOR HEAVY DUTY U.O.N.
- STARTERS AND RELATED WIRING SHALL BE INSTALLED BY ELECTRICAL CONTRACTOR. OVERLOAD UNITS SHALL BE PER NAME PLATE DATA ON EQUIPMENT, EXCEPT FOR SUCH ITEMS AS ARE NORMALLY SUPPLIED WITH STARTERS INSTALLED (DRIVE UNITS, DSH-WASHERS ETC.) AT THEIR POINT OF MANUFACTURE. ALL STARTERS SHALL BE SUPPLIED AND INSTALLED BY THE ELECTRICAL CONTRACTOR. THE ELECTRICAL CONTRACTOR WILL MOUNT ALL SUCH STARTERS, AS DIRECTED, TURNING SUPPORTING STRUCTURES WHERE NECESSARY.
- ANY FEES ASSOCIATED WITH CONSTRUCTION AND INSPECTION SHALL BE BORNE BY THE CONTRACTOR IN ORDER TO DELIVER TO THE OWNER A FINISHED BUILDING, READY FOR OCCUPANCY AND 100% OPERATION.
- TWO COPIES OF OPERATION AND MAINTENANCE MANUALS FOR THE EQUIPMENT HEREIN INSTALLED SHALL BE GIVEN TO THE OWNER PRIOR TO ACCEPTANCE OF THE BUILDING FOR OCCUPANCY.
- ALL PANELBOARDS AND EMERGENCY LIGHTING DISCONNECT SWITCHES SHALL BE LABELED WITH RESPECT TO THEIR TITLE, VOLTAGE AND PHASE; I.E. PANEL "A" 120/208/3Ø LABEL SHALL BE PHENOLIC PLATING WITH WHITE LETTERS AND BLACK BACKGROUND. LABELS SHALL BE PERMANENTLY FIXED TO THE EQUIPMENT.
- PANELBOARDS SHALL CONTAIN A TYPED DIRECTORY WITH A PLASTIC COVER AFFIXED TO THE INSIDE DOOR.
- CONTRACTOR SHALL SUBMIT 6 COPIES OF SHOP DRAWINGS TO THE ARCHITECT/ENGINEER FOR APPROVAL FOR ALL EQUIPMENT AND DEVICES INSTALLED. THERE WILL BE NO SHOP DRAWINGS UNTIL DRAWINGS HAVE BEEN SUBMITTED & REVIEWED BY ARCH./ENGR.
- ANY DEVIATION FROM PLANS WITHOUT PRIOR APPROVAL OF THE ARCHITECT SHALL BE CAUSE FOR THE REJECTION OF MATERIALS AND/OR METHODS, AND ANY COST INCURRED TO CORRECT SUCH DEVIATION TO THE SATISFACTION OF THE A/E SHALL BE BORNE BY THE CONTRACTOR.
- ANY COSTS INCURRED DUE TO LACK OF COOPERATION AMONG THE TRADES SHALL BE BORNE BY THE CONTRACTOR.
- THE SUBMISSION OF A PROPOSAL SHALL BE CONSTRUED AS EVIDENCE THAT THE CONTRACTOR HAS FAMILIARIZED HIMSELF WITH THE PLANS AND BUILDING SITE. CLAIMS MADE SUBSEQUENT TO THE PROPOSAL FOR MATERIALS AND LABOR, BECAUSE OF DIFFICULTIES ENCOUNTERED, WILL NOT BE RECOGNIZED IF THEY COULD HAVE BEEN FORESEEN AND PROPER EXAMINATION BEEN MADE.
- TRADE NAMES ARE GIVEN TO CLARIFY TYPE OF PRODUCT AND QUALITY DESIRED.
- CONTRACTORS SHALL VERIFY SERVICE VOLTAGE WITH UTILITY COMPANY, AND REVERSE AND BALANCE PANEL AS REQUIRED.
- CONTRACTOR SHALL VERIFY LOCATION OF PARKING LOT LIGHTS AND PLUGS ON AN INDIVIDUAL SITE PLAN.
- ALL REMOTE EQUIPMENT ON ROOF OR GROUNDS SHALL HAVE A DISCONNECT SWITCH AT EACH PIECE OF EQUIPMENT. FURNISH FUSED DISCONNECTS AS REQUIRED BY N.E.C.
- CONTRACTOR SHALL VERIFY LOCATION OF PARKING LOT LIGHTS AND PLUGS ON AN INDIVIDUAL SITE PLAN.
- INSULATE ALL CONDUIT PASSING THROUGH WALK-IN COOLER, FILL AROUND CONDUIT WITH DUCT-IN SEAL WHERE IT PASSES THROUGH COOLER WALL OR CEILING.
- ALL EXTERIOR CONDUIT FOR WIRING SHOULD BE MINIMIZED BY ROUTING IN CEILING SPACE. NO EXTERIOR CONDUIT WILL BE ACCEPTED, U.O.N.
- THE CONTRACTOR SHALL BE RESPONSIBLE TO VERIFY THE AVAILABLE SHORT CIRCUIT CURRENT AT THE SUPPLY TERMINALS WITH THE UTILITY POWER COMPANY. THE SERVICE EQUIPMENT SHALL MEET OR EXCEED THIS RATING PER N.E.C.
- IT SHALL BE THIS CONTRACTOR'S RESPONSIBILITY, PRIOR TO ANY INDIVIDUAL CIRCUIT'S INSTALLATION, TO VERIFY WITH ALL OTHER TRADES CONCERNED THAT THE CIRCUIT WITH DEVICES AS DRAWN IS ACCURATE IN SIZE AND MAKE-UP FOR THE MECHANICAL AND/OR KITCHEN EQUIPMENT TO BE INSTALLED. IF ANY CONFLICT IN VOLTAGE, PHASE OR LOAD IS ENCOUNTERED WHICH WOULD ALTER THE CIRCUIT SIZE, THIS CONTRACTOR SHALL NOTIFY THE ENGINEER OR OWNER IMMEDIATELY. FAILURE TO DO SO SHALL PLACE THE RESPONSIBILITY FOR ANY SUBSEQUENT CIRCUIT CHANGE DIRECTLY UPON THE CONTRACTOR.
- ALL ITEMS IN THE NOTES, SCHEDULES AND LEGEND MAY NOT NECESSARILY APPEAR ON THESE DRAWINGS.
- FOR POWER CIRCUITS MINIMUM WIRE SIZE SHALL BE #12 AWG AND MINIMUM CONDUIT SIZE SHALL BE 3/4" O.D. ALL WIRING SHALL BE RUN IN CONDUIT.
- WIRING SHOWN IN THE PANEL SCHEDULE IS THE MINIMUM REQUIRED. RUNS IN EXCESS OF 30'-0" (ONE WAY) SHALL BE SIZED PER THE N.E.C. MAXIMUM 3% V.D.
- COORDINATE WITH LOCAL UTILITIES FOR THEIR REQUIREMENTS.
- PROVIDE GFI OUTLETS (GFI CIRCUIT BREAKERS IN PANELBOARD) WHERE RECEPTACLE'S TEST/RESET BUTTONS ARE NOT LOCATED IN A READILY ACCESSIBLE LOCATION.
- ALL ELECTRICAL OUTLETS SHALL COMPLY WITH NEC 210.8(B)(2) WHICH WILL REQUIRE RESTROOMS, OUTDOORS, ROOFS, MECHANICAL ROOMS AND KITCHEN/BARS TO BE PROTECTED FROM OTHER INDIVIDUAL GFI DEVICES OR GFI CIRCUIT BREAKERS, UNLESS SPECIFICALLY NOTED ON THE DRAWINGS OR SCHEDULES. ALSO SEE NEC 407.4(B), REFERENCING ISOLATED GROUND RECEPTACLES. VERIFY WITH LOCAL AUTHORITY HAVING JURISDICTION ON NEC ADDITION ENFORCED.)
- IS-G-GFI RECEPTACLES SHALL BE LEGRAM #1598-NR100 OR APPROVED EQUAL. PROVIDE ISOLATED GROUND RECEPTACLES PER NEC 407.4(B) FOR TERMINATION OF BRANCH CIRCUIT EQUIPMENT GROUNDING CONDUCTORS. VERIFY WITH LOCAL AUTHORITY HAVING JURISDICTION ON NEC ADDITION ENFORCED.)

HOOD FIRE SUPPRESSION SYSTEM

- EC TO FURNISH INTERLOCK OF ALL EQUIPMENT BELOW THE HOOD, SHUTTING OFF ALL SERVICE, INCLUDING CONTROL VOLTAGE UPON ACTIVATION OF THE FIRE PROTECTION SYSTEM.
- EC TO FURNISH AND INSTALL AN OCTAGON SHAPED HANDY BOX FOR THE PULL STATION AT 54" A.F.F. WITH 1/2" TO 1" ABOVE THE CEILING.
- VERIFY LOCATION OF PULL STATION UNIT MUST BE PLACED WITHIN EASY ACCESS OF EXIT DOOR.



NOTE: COORDINATE DIMENSION WITH MANUFACTURERS SPECIFICATIONS.

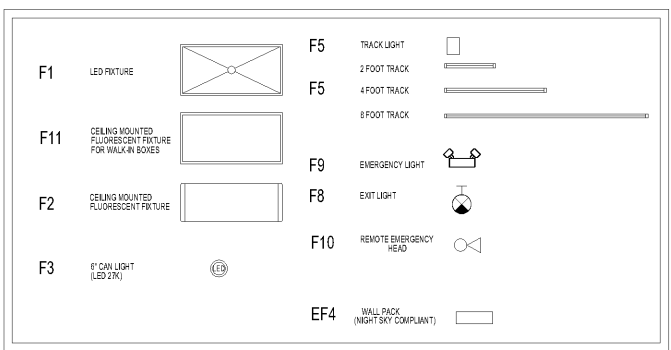


MARK	DESCRIPTION	LAMP TYPE	CATALOG NO.
F1	2' X 4' RECESSED LED FIXTURE WITH DIFFUSING LENS.	INCLUDED (40W)	CREE CR24-40L-40K-S
F2	LED STRIP FIXTURE WITH ELECTRONIC BALLAST	2-14T/48-3500K (28W) LED 3500K	PHILIPS 1232-UNV-1/2
F3	6" LED RECESSED DOWNLIGHT WITH WHITE TRIM, 625 LUMEN OUTPUT, EDISON BASE	INCLUDED (9.5W) 2700K	CREE RC/CR6-625L-27K-12-E26
F3A	6" LED RECESSED DOWNLIGHT, 800 LUMEN OUTPUT, EDISON BASE	INCLUDED (12W) 2700K	CREE RC/CR6-800L-27K-12-E26
F3B	4" LED RECESSED DOWNLIGHT	INCLUDED (9.5W)	CREE CR4-575L-27K-12-E26-HALO H99RTAT RECESSED HOUSING
F4	4" LOW VOLTAGE RECESSED DOWNLIGHT WITH BLACK BAFFLE, ADDITIONAL SPREAD LENS TED PER TABLE SIZE (36 DEG FOR ROUND TABLE)	SORAA (7.5W) LED 10 DEGREE NSP MR16 SM16-07-100-927-03	EL1499RS / EL1493BB / RC-CC-3536-00-S1 SORAA LENS
F4 FCT	4" LOW VOLTAGE RECESSED DOWNLIGHT WITH BLACK BAFFLE, ADDITIONAL SPREAD LENS TED PER TABLE SIZE (10 DEG BY 36 DEG FOR RECTANGLE/PARTY TABLE)	SORAA (7.5W) LED 10 DEGREE NSP MR16 SM16-07-100-927-03	EL1499RS / EL1493BB / AC-CC-1036-00-S1 SORAA LENS
F4A	5" RECESSED FRAME-IN LED DOWNLIGHT WITH 8" BLACK STEP BAFFLE WHITE TRIM	LARGE PINK LED (9W) 8" BLACK STEP BAFFLE /LED	LIGHTOLIER 1002P1 / 1076
F5	INCANDESCENT BLACK TRACK HEADS WITH BARN DOORS	GREENCREATIVE 8PAR20G30M / 827 / FL40 (40615) (9W)	JUNO R500 BL/T71 BL
F5-4	4" BLACK SINGLE CIRCUIT TRACK	---	JUNO R4FTBL
F5-R	8" BLACK SINGLE CIRCUIT TRACK	---	JUNO R8FTBL
F5 END	TRACK END	---	JUNO R38BL
F5	TRACK JOINER	---	JUNO R23BL
F6	THEATRICAL TRACK HEADS WITH BARN DOORS & 25 DEGREE SNAP-ON COLORED LENSES (MAGNETIC) IN THE FOUR COLORS SPECIFIED ON THE PLAN	SORAA (18.5W) PAR30S MODEL #SP30S-18-090-827-03	TIMES SQUARE LIGHTING CUSTOM TRUSS SYSTEM/LAM781/B/CC18-MCB-SC-24/ISL 01145-COLOR LENS
F6A	BLUE LED TRUSS WARMERS	SUNLITE (7.5W) PAR20/LED/7.5W/FL40/DM/ES/30	TIMES SQUARE LIGHTING 5820-8/WC-B
F7	82" PRO UNIVERSAL HUGGER CEILING FAN, OILED BRONZE, MOTOR/54" TYPE 1 DAMP LOCATION, PREMIER HAND SCRAPED WALNUT FAN BLADES (SET OF 3)	N/A	CRAFTMADE PHS20B / B564P-N
F8	LED EXIT LIGHT UNIT WITH RED LETTERS AND REMOTE HEAD CAPABILITY, BLACK FINISH, 90 MINUTE BATTERY BACKUP.	INCLUDED (15W)	DUAL LIFE LITHONIA-L0
F8A	LED EXIT LIGHT UNIT WITH RED LETTERS AND BLACK FINISH, 90 MINUTE BATTERY BACKUP.	INCLUDED (15W)	LITHONIA LHM-S-120-Z-FLN
F8B	LED EXIT LIGHT UNIT WITH RED LETTERS AND REMOTE HEAD CAPABILITY, WHITE FINISH, DAMP LOCATION, 90 MINUTE BATTERY BACKUP.	INCLUDED (12W)	LITHONIA LHM-S-120-R-HC
F8C	LED EXIT LIGHT UNIT WITH RED LETTERS AND WHITE FINISH, DAMP LOCATION 90 MINUTE BATTERY BACKUP.	INCLUDED (3.3W)	LITHONIA LHM-S-3-R
F9	EMERGENCY LIGHT UNIT, BLACK FINISH, WITH REMOTE HEAD CAPABILITY, 90 MINUTE BATTERY BACKUP.	INCLUDED (2W)	DUAL LIFE LITHONIA-L0
F10	REMOTE EMERGENCY HEAD WITH PLATE, BLACK FINISH WITH TWO LAMPS, 90 MINUTE BATTERY BACKUP.	INCLUDED (10W)	DUAL LIFE OCRD080605
F11	COOLER/FREEZER LED LIGHTING SURFACE MOUNTED	INCLUDED (3.3W) 5000K	H.E. WILLIAMS 98-4-LB2/850-HAIF-DR-V-UNV SUPPLIED BY HOOD MANUFACTURER
F12	HOOD LIGHTS	INCLUDED (100W A19 LIFT 30K)	JESCO SG-LED-24-40-W-SW / SG-PC24-W
F13	MEAT COOLER UNDERCOUNTER LIGHT.	1-LED (7.8W), 4000K	PROGRESS P8803/31 WITH P8716-01 MTG KIT
F14	RECESSED INCANDESCENT LOUVERED STEP LIGHT, BLACK FINISH	1-HLC (20W) 18.5 FR20 INT	PROGRESS LIGHTING P5642-31/30K/P8798-31
F15	MONO-POINT ADAPTER ACCENT LIGHT WARM WHITE LED	GREENCREATIVE 8PAR20G30M/827/FL40 (40615) (9W)	JUNO R500 BL/T71 BL/R40N BL
F17	BLACK UP/DOWN WALL SCIENCE WITH TOP LENS	INCLUDED (29W) LED 3500K	PROGRESS LIGHTING P5642-31/30K/P8798-31
F18	LED GLOSS BLACK GOOSENECK WALL SCIENCE	INCLUDED (31W) LED 4000K	HI-LITE MANUFACTURING H-18114-991/HL-A-991/31W/LED2/40/F/BCM-M
F23	UNDER AWNING LED LIGHTS, 625 LUMENS, GU24 BASE, FLAT BLACK HOUSING/TRIM	INCLUDED (9.5W) LED 3500K	CREE RC6-BL-GU24/CR6-625L-35K-12-GU24/CT88B
F24	BRONZE WALL PACK AT DUMPSTER (PHOTOCELL CONTROLLED)	INCLUDED (40W) LED 5000K	RAB BRISKXL40/PCU
F25	6" LED RECESSED CAN LIGHT W/ 625 LUMENS, EDISON BASE, FLAT BLACK TRIM	INCLUDED (9.5W) LED 3500K	CREE RC6/CR6-625L-35K-12-E26/CT88B
F28	UL LISTED, WET LOCATION LED BLACK GOOSENECK ARM INCLUDED W/FIXTURE, SEE EXTERIOR ELEVATIONS FOR EXACT LOCATIONS	GREENCREATIVE 12A19G40M / 827 (18175) 2700K (12W)	TROY LIGHTING 3RS16MMB-F3/3SLE23-MB
F28	RECTANGULAR SHAPED LED FLAG POLE LIGHT, SINGLE PHOTO CONTROL	INCLUDED (39W) LED 4000K	RAB LIGHTING RFLD30W/GROSSOCPLG/RLMMB130BLK-001B/2115

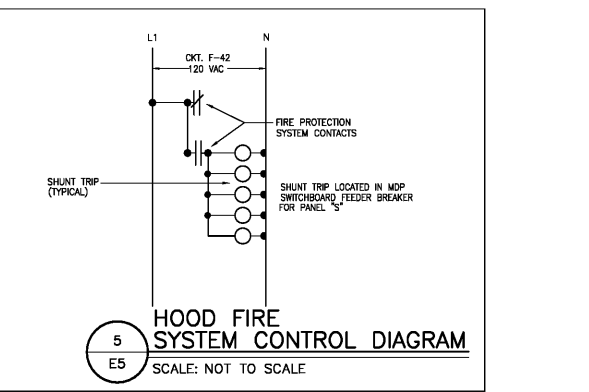
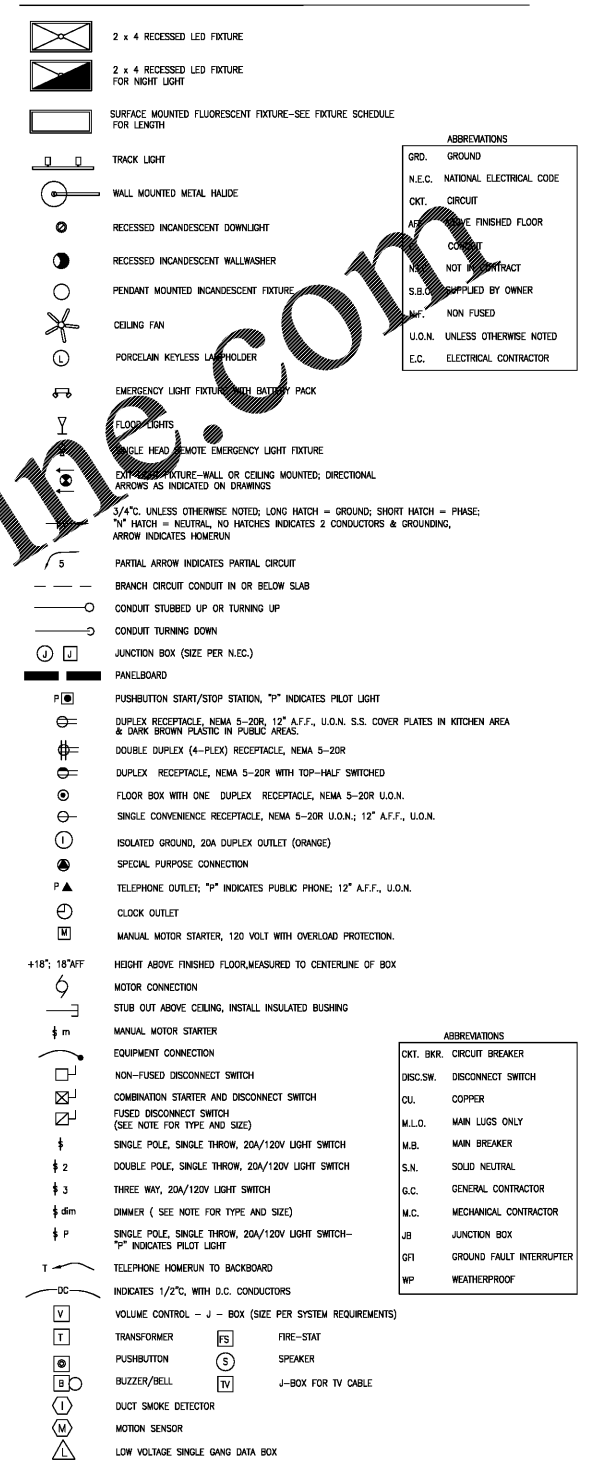
- NOTES:
1. ALL FIXTURES SHALL BE SUPPLIED BY OWNER.
2. NOT ALL FIXTURES ON FIXTURES SCHEDULE MAY APPEAR ON DRAWING.
3. ALL LAMPS SHALL BE MANUFACTURED BY PHILIPS LIGHTING, NO EXCEPTIONS.
4. ONLY LAMP WATTAGE AS SHOWN ON LIGHTING FIXTURE. SCHEDULE MAY BE USED.
5. ALL LIGHTING FIXTURES AVAILABLE THROUGH ACCUSERV - DANA BRUCE OR BUDDY BOCKWEG 877-707-7378.

ITEM	DESCRIPTION	CATALOG NO.
MECHANICAL ROOM HEATER	HEATER SKW 208V 1P OR 3P HEATER ACCY - WALL/CEILING MOUNT BRACKET HEATER ACCY - 2 STAGE THERMOSTAT SKW 208V 1P OR 3P 2500W OR 2500W	MARHUHAAS20 MARB10 MARHW12
VESTIBULE HEATER	RECESS MOUNTING ENCLOSURE ONLY FOR FTCH TRIM RING FOR MT ON PERMANENT CEILING 1 POLE WALL TSTAT	MARFFCHSSB MARFFCHREA MARFFCHTK MARMS26
FAN SWITCH	ILLUMATECH FAN SPEED CONTROLLER (5A, 120VAC, 60HZ) ILLUMATECH COLOR CHANGE KIT FOR QUIET FAN SPEED CONTROL (BLACK)	IPFS-1LW-E IPDFK-DOW-E

NOTES:
1. CONTACT DANA BRUCE OR BUDDY BOCKWEG AT 877-707-7378 FOR ALL ITEMS FROM ACCUSERV.
2. NOT ALL FIXTURES ON FIXTURES SCHEDULE MAY APPEAR ON DRAWING.



ELECTRICAL SYMBOL LEGEND



ISSUE/REVISION RECORD
DATE DESCRIPTION
02/28/19 COORDINATION SET
02/20/19 HEALTH SUBMITTAL
04/24/19 HEALTH RESPONSE
05/03/19 PERMIT/BD SET

PROJECT NAME
BUBBA'S 33

PROJECT NUMBER
20181046.0

SHEET TITLE
ELECTRICAL NOTES AND DETAILS

SHEET NUMBER
E5

PROJECT MANAGER
GUSTAVO ALVAREZ

QUALITY CONTROL
GUSTAVO ALVAREZ

DRAWN BY
GUSTAVO ALVAREZ

PROJECT NAME
BUBBA'S 33

PROJECT NUMBER
20181046.0

SHEET TITLE
ELECTRICAL NOTES AND DETAILS

SHEET NUMBER
E5

PROJECT MANAGER
GUSTAVO ALVAREZ

QUALITY CONTROL
GUSTAVO ALVAREZ

DRAWN BY
GUSTAVO ALVAREZ

PROJECT NAME
BUBBA'S 33

PROJECT NUMBER
20181046.0

SHEET TITLE
ELECTRICAL NOTES AND DETAILS

SHEET NUMBER
E5

PROJECT MANAGER
GUSTAVO ALVAREZ